



Chipsmall Limited consists of a professional team with an average of over 10 year of expertise in the distribution of electronic components. Based in Hongkong, we have already established firm and mutual-benefit business relationships with customers from,Europe,America and south Asia,supplying obsolete and hard-to-find components to meet their specific needs.

With the principle of “Quality Parts,Customers Priority,Honest Operation,and Considerate Service”,our business mainly focus on the distribution of electronic components. Line cards we deal with include Microchip,ALPS,ROHM,Xilinx,Pulse,ON,Everlight and Freescale. Main products comprise IC,Modules,Potentiometer,IC Socket,Relay,Connector.Our parts cover such applications as commercial,industrial, and automotives areas.

We are looking forward to setting up business relationship with you and hope to provide you with the best service and solution. Let us make a better world for our industry!



## Contact us

Tel: +86-755-8981 8866 Fax: +86-755-8427 6832

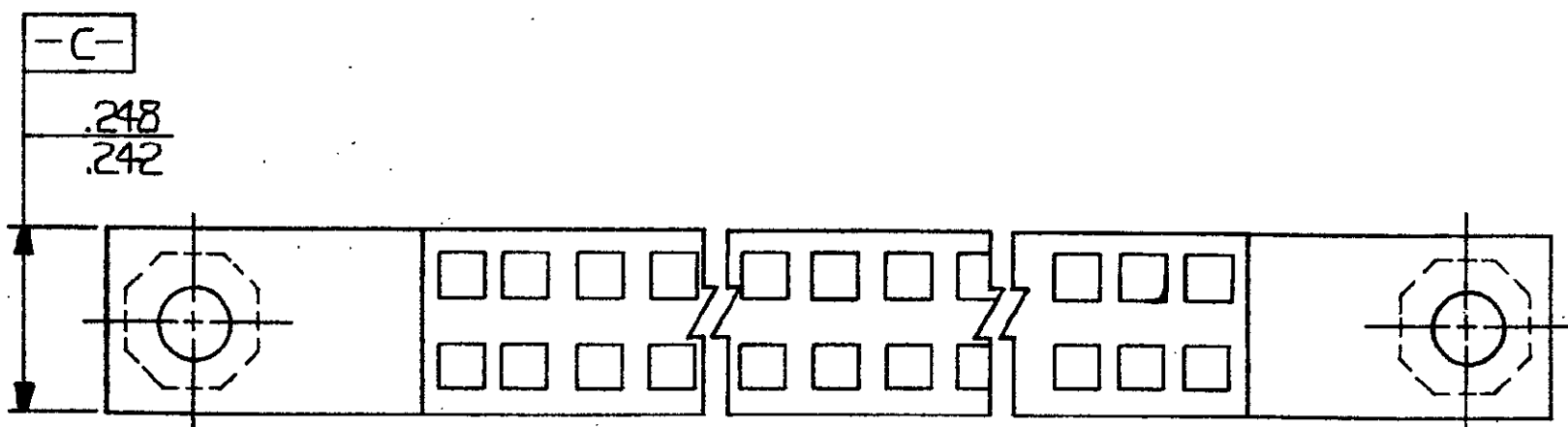
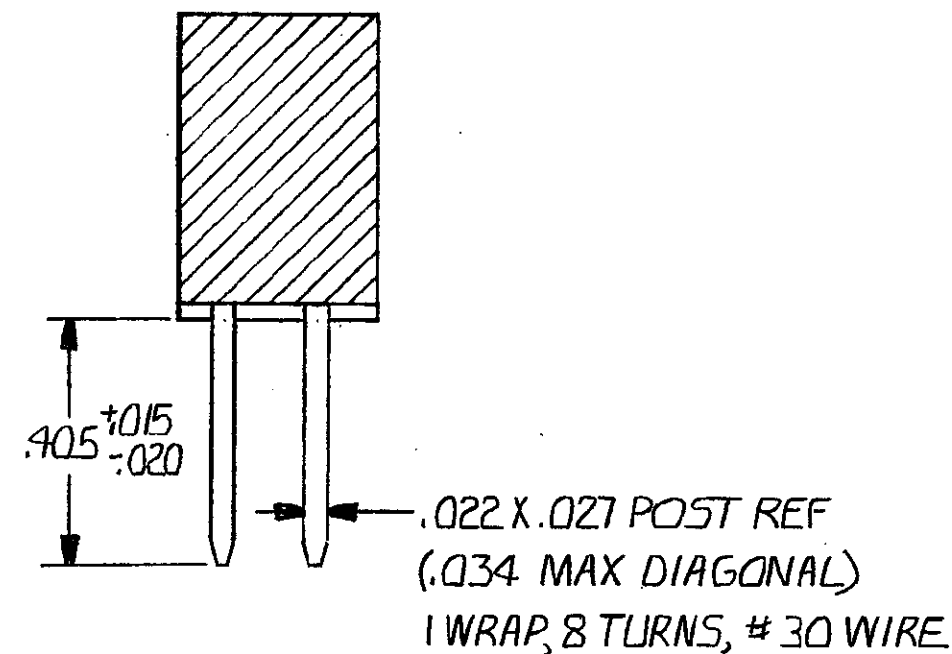
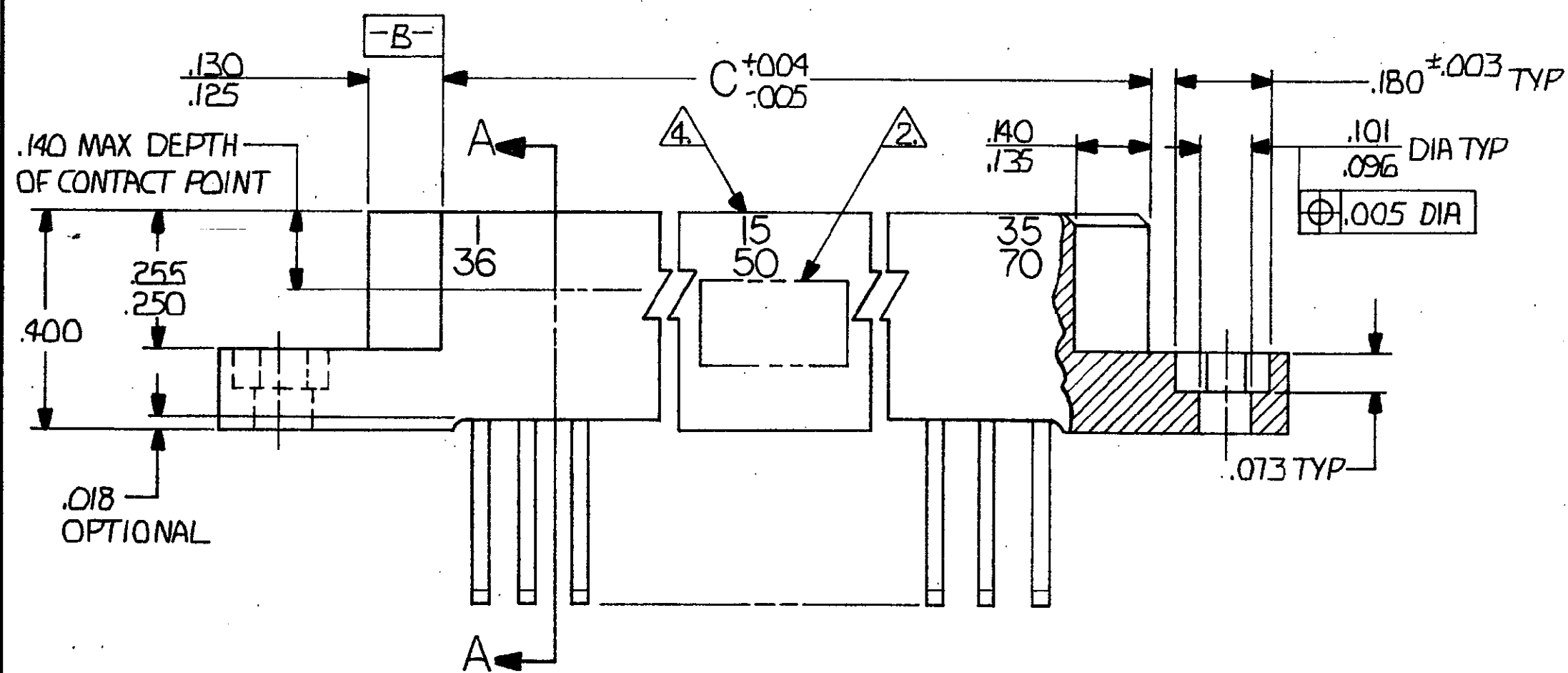
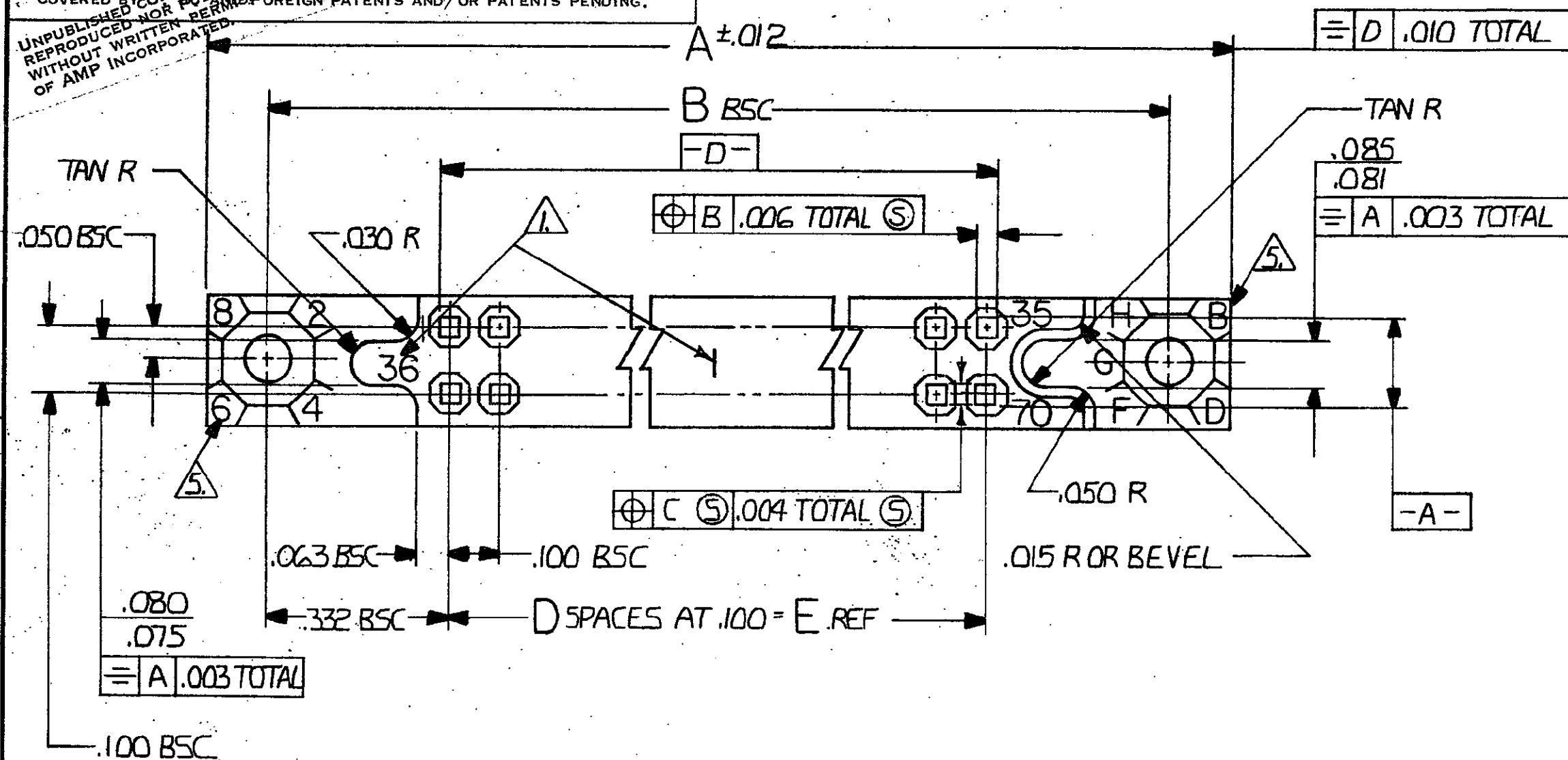
Email & Skype: info@chipsmall.com Web: www.chipsmall.com

Address: A1208, Overseas Decoration Building, #122 Zhenhua RD., Futian, Shenzhen, China



© COPYRIGHT 19 BY AMP INCORPORATED, HARRISBURG, PA.  
ALL INTERNATIONAL RIGHTS RESERVED. AMP INCORPORATED PRODUCTS  
COVERED BY COPYRIGHT AND PATENT RIGHTS. AMP INCORPORATED PRODUCTS  
UNPUBLISHED COPY RIGHTS RESERVED. AMP INCORPORATED PRODUCTS  
REPRODUCED WITHOUT WRITTEN PERMISSION  
OF AMP INCORPORATED

REVISIONS						
P	F	ZONE	LTR	DESCRIPTION	DATE	APPROVED
		F		ECO-08-020831	PY 10-08	BW



UNLESS OTHERWISE SPECIFIED DIMENSIONS ARE IN INCHES. TOLERANCES ON: DECIMALS $\pm .005$ ANGLES $\pm .005$	CONTRACT NO	PART NO	
	DR <i>Robert Wolbert</i> 11-12-76	AMP INCORPORATED Harrisburg, Pa.	
	CHK <i>R. Williams</i> 11-23-76	NAME BOX CONNECTOR RECEPTACLE ASSY .100 GRID EXTERNAL KEYING	
	APPD <i>R. Williams</i> 11-23-76	SIZE C	CODE IDENT NO 00779
MATERIAL	APPD <i>D.C. Myers</i> 11-29-76	DSGN APPD	REV F
FINISH	OTHER APPD	SCALE 4-1	SHEET 1 OF 2

DRAWING MADE IN THIRD ANGLE PROJECTION

3

2

1

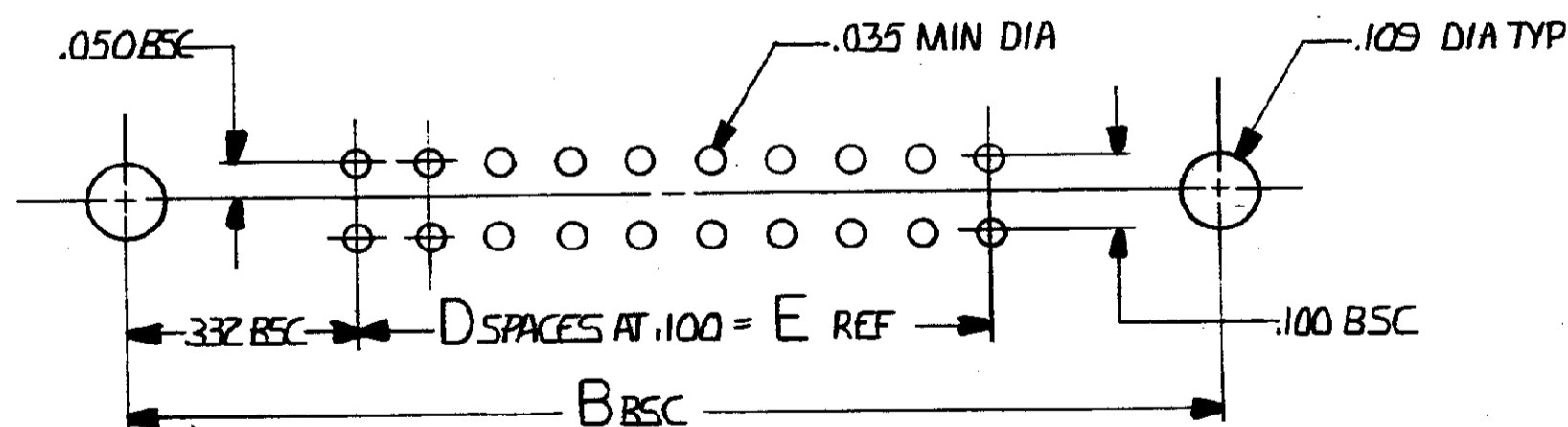
LOC'DIST  
DF FO

© COPYRIGHT 1976 AMP INCORPORATED, HARRISBURG, PA.  
ALL INTERNATIONAL RIGHTS RESERVED. AMP INCORPORATED PRODUCTS  
COVERED BY U. S. PATENTS AND/OR PATENTS PENDING.

REVISIONS				DATE	APPROVED
P	F	ZONE	LTR	DESCRIPTION	
				SEE SHEET 1 OF 2	

UNPUBLISHED COPY NOT TO BE REPRODUCED OR TRANSMITTED IN ANY FORM OR BY ANY MEANS WITHOUT WRITTEN PERMISSION OF AMP INCORPORATED.

- 1. NUMBERS AND LINES INDICATING EVERY FIVE CAVITIES MARKED ON MATING FACE.
- 2. AMP PART NUMBER DATE CODE, 00779 & MILITARY PART NUMBER MARKED IN THIS AREA SIDE OPTIONAL
- 3. MUST MEET ALL APPLICABLE REQUIREMENTS OF MIL-C-55302.
- 4. NUMBERS INDICATING EVERY FIVE CAVITIES MARKED ON SIDE
- 5. KEY POSITION IDENTIFICATION MOLDED ON SURFACES SHOWN.
- 6. USE EXTERNAL KEY NUMBER 530341-1 MATES WITH PART NUMBER 530339.
- 7. HOUSING MATERIAL: DIALLYL PHTHALATE COLOR: BLUE PER MIL-M-14 TYPE SDG-F.
- 8. CONTACT MATERIAL: BERYLLIUM COPPER .000050 GOLD OVER NICKEL.



RECOMMENDED PRINTED CIRCUIT BOARD LAYOUT

M55302/27-225	71	190 <sup>70</sup>	6.900	69	7.165	7.565	7.855	140	1-530781-3
M55302/27-224	68	134 <sup>67</sup>	6.600	66	6.865	7.265	7.555	134	1-530781-2
M55302/27-223	66	130 <sup>65</sup>	6.400	64	6.665	7.065	7.355	130	1-530781-1
M55302/27-222	61	120 <sup>60</sup>	5.900	59	6.165	6.565	6.855	120	1-530781-0
M 55302/27-171	56	110 <sup>55</sup>	5.400	54	5.665	6.065	6.355	110	530781-9
M 55302/27-170	51	100 <sup>50</sup>	4.900	49	5.165	5.565	5.855	100	8
M 55302/27-169	46	90 <sup>45</sup>	4.400	44	4.665	5.065	5.355	90	-7
M 55302/27-168	41	80 <sup>40</sup>	3.900	39	4.165	4.565	4.855	80	-6
M 55302/27-167	36	70 <sup>35</sup>	3.400	34	3.665	4.065	4.355	70	-5
M 55302/27-166	31	60 <sup>30</sup>	2.900	29	3.165	3.565	3.855	60	-4
M 55302/27-165	26	50 <sup>25</sup>	2.400	24	2.665	3.065	3.355	50	-3
M 55302/27-164	21	40 <sup>20</sup>	1.900	19	2.165	2.565	2.855	40	-2
M 55302/27-163	16	30 <sup>15</sup>	1.400	14	1.665	2.065	2.355	30	530781-1
M 55302									
PART NUMBER	CONTACT IDENTIFICATION NO		E	D	C	B	A	NO OF CONTACTS	PART NO

UNLESS OTHERWISE SPECIFIED DIMENSIONS ARE IN INCHES. TOLERANCES ON: DECIMALS ± .005 ANGLES ± .005	CONTRACT NO	AMP INCORPORATED Harrisburg, Pa.	
	DR Robert Weber 11-15-76 CHK R Williams 11-23-76 APPD R Williams 11-23-76 APPD D. Myers 11-29-76	NAME BOX CONNECTOR RECEPTACLE ASSY .100 GRID EXTERNAL KEYING	
MATERIAL T. 8.	DSGN APPD	SIZE C	CODE IDENT NO 00779
FINISH 8.	OTHER APPD	DRAWING NO 530781	REV F
		SCALE 4:1	SHEET 2 OF 2

CUSTOMER DRAWING

530781