



Chipsmall Limited consists of a professional team with an average of over 10 year of expertise in the distribution of electronic components. Based in Hongkong, we have already established firm and mutual-benefit business relationships with customers from,Europe,America and south Asia,supplying obsolete and hard-to-find components to meet their specific needs.

With the principle of “Quality Parts,Customers Priority,Honest Operation,and Considerate Service”,our business mainly focus on the distribution of electronic components. Line cards we deal with include Microchip,ALPS,ROHM,Xilinx,Pulse,ON,Everlight and Freescale. Main products comprise IC,Modules,Potentiometer,IC Socket,Relay,Connector.Our parts cover such applications as commercial,industrial, and automotives areas.

We are looking forward to setting up business relationship with you and hope to provide you with the best service and solution. Let us make a better world for our industry!



Contact us

Tel: +86-755-8981 8866 Fax: +86-755-8427 6832

Email & Skype: info@chipsmall.com Web: www.chipsmall.com

Address: A1208, Overseas Decoration Building, #122 Zhenhua RD., Futian, Shenzhen, China



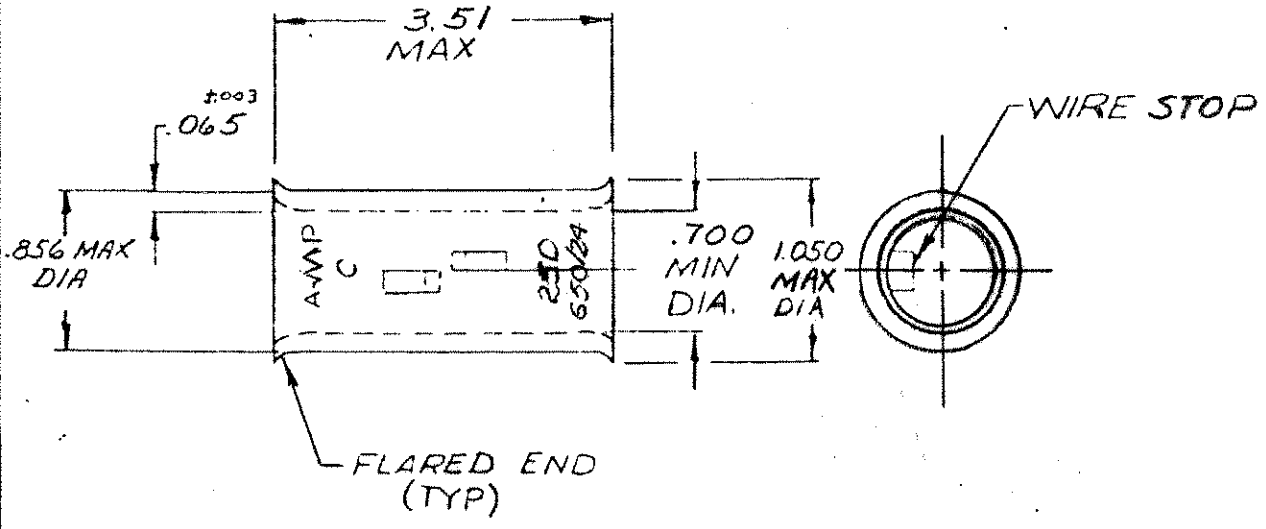
DRAWING MADE IN AMERICAN PROJECTION

LOC 88 (5) PRINT DATE

© 1977 BY AMP INCORPORATED. ALL RIGHTS RESERVED. AMP PRODUCTS TO BE COVERED BY PATENT. COPIES PUBLISHED WITHOUT WRITTEN PERMISSION OF AMP INCORPORATED.

REVISIONS				
LTN	DESCRIPTION	ATE	APPROVED	
0	NPS 71-0917 EF	2-15-72	L/m	
A	ADDED PR STAMPING ECN P-7-63 JR	12-27-74	W/m	
B	OBSOLETE PER G-3171 JT	8/18/88	PMF	
C	REACTIVATE PER G-5673	4/2/91	LO/DKS	
D	REV 10G-10-0030-99	3/10/99	ME/SU	
E	REV PER 063A-0637-01	3/02/02	JL/m	

53085



UNLESS OTHERWISE SPECIFIED DIMENSIONS ARE IN INCHES - TOLERANCES DECIMALS ANGLES

MATERIAL:
COPPER:
(ASTM B-75)
FINISH:
TIN PLATE:
(ASTM B545)

CONTRACT NO.	4
DR.	C. F. Fisher 2-14-72
CHK	Em Erwin 2-15-72
APPL	Abel 2-16-72
DATE	Erwin 2-16-72
DSGN APPD	
OTHER APPD	



AMP INCORPORATED
HARTFORD, CONNECTICUT

NAME: WIRE SPLICE AMPPOWER-BUTT WIRE SIZE: 250 MCM		
SIZE: A	CORE IDENT NO.: 00779	NUMBER: 53085
SCALE: N. 3/4		SHEET 1 OF 1

CUSTOMER