



Chipsmall Limited consists of a professional team with an average of over 10 year of expertise in the distribution of electronic components. Based in Hongkong, we have already established firm and mutual-benefit business relationships with customers from,Europe,America and south Asia,supplying obsolete and hard-to-find components to meet their specific needs.

With the principle of “Quality Parts,Customers Priority,Honest Operation,and Considerate Service”,our business mainly focus on the distribution of electronic components. Line cards we deal with include Microchip,ALPS,ROHM,Xilinx,Pulse,ON,Everlight and Freescale. Main products comprise IC,Modules,Potentiometer,IC Socket,Relay,Connector.Our parts cover such applications as commercial,industrial, and automotives areas.

We are looking forward to setting up business relationship with you and hope to provide you with the best service and solution. Let us make a better world for our industry!



Contact us

Tel: +86-755-8981 8866 Fax: +86-755-8427 6832

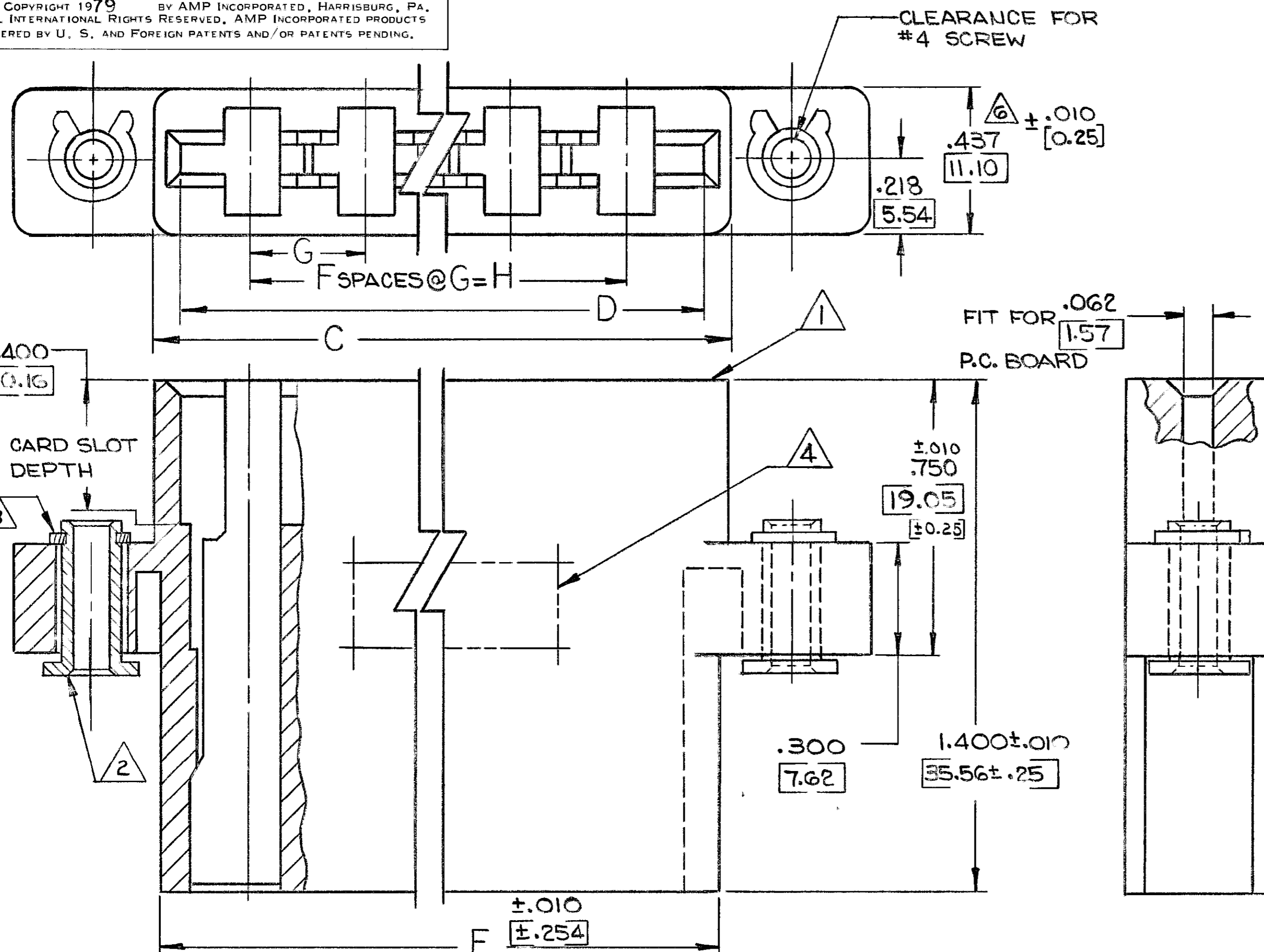
Email & Skype: info@chipsmall.com Web: www.chipsmall.com

Address: A1208, Overseas Decoration Building, #122 Zhenhua RD., Futian, Shenzhen, China

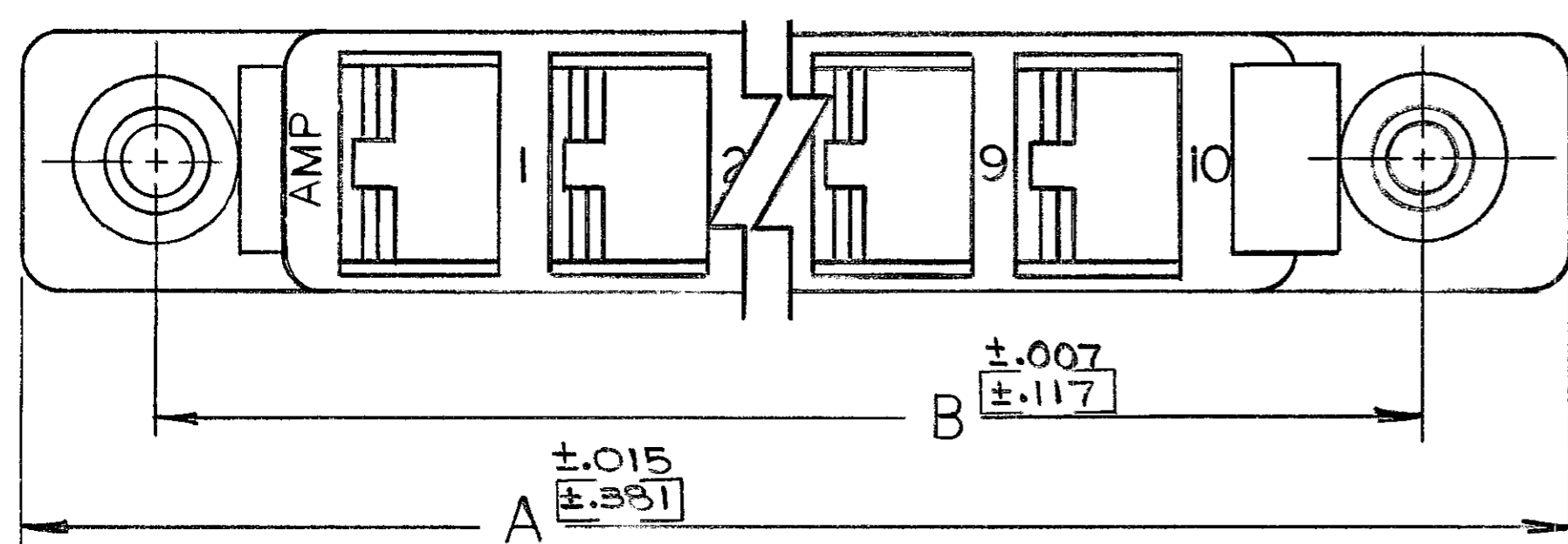


© COPYRIGHT 1979 BY AMP INCORPORATED, HARRISBURG, PA. ALL INTERNATIONAL RIGHTS RESERVED. AMP INCORPORATED PRODUCTS COVERED BY U. S. AND FOREIGN PATENTS AND/OR PATENTS PENDING.

REVISIONS						
P	F	ZONE	LTR	DESCRIPTION	DATE	APPROVED
	✓		O	WAS 5257-40		
A	✓		A	REVISED 6316 m.s.	10-79	
✓			B	REVISED PER ECIJ ADD188	5/11/84	E.P.
✓			C	REV PER AD 1822	7-2-87	CBW
✓			D	REV PER 0010-0014-96	1-96	P.B.
✓			E	REV PER EC 0G3C-233-01	03OCT01	MM



- ① HOUSING-MATERIAL: GLASS-FILLED POLYESTER, COLOR=NATURAL.
- ② BUSHING-MATERIAL: STAINLESS STEEL, PASSIVATE FINISH.
- ③ RETAINING RING-MATERIAL: ZINC PLATED CARBON SPRING STEEL.
- ④ "AMP", PART NO., & DATE CODE MARKED THIS AREA.
- 5. DIMENSIONS IN BRACKETS ARE METRIC EQUIVALENTS.
- ⑥ MEASURE ACROSS MOUNTING EARS. MAY GO TO .020 [0.51] OVER NOMINAL AT TOP OF HOUSING.
- 7. VOID CORING OPTIONAL.



OBSOLETE

H	G	F	E	D	C	B	A	NO. OF POSITIONS	PART NO
.624 [15.85]	.312 [7.92]	2	1.114 [28.30]	1.024 [26.01]	1.164 [29.57]	1.538 [39.07]	1.972 [50.09]	3	531702-3
2.808 [71.32]	.312 [7.92]	9	3.298 [83.77]	3.208 [81.48]	3.343 [85.04]	3.722 [94.54]	4.156 [105.56]	10	531702-2
.312 [7.92]	.312 [7.92]	1	.602 [15.30]	.712 [18.08]	.852 [21.64]	1.226 [31.14]	1.660 [42.16]	2	531702-1

UNLESS OTHERWISE SPECIFIED DIMENSIONS ARE IN INCHES TOLERANCES ON: DECIMALS ±.005 [0.127] ANGLES ±	CONTRACT NO	AMP AMP INCORPORATED Harrisburg, Pa. NAME HOUSING ASSEMBLY, HIGH CURRENT CONNECTOR, WITH FLOATING BUSHING SIZE CODE IDENT NO DRAWING NO C 00779 531702 SCALE 4-1 SHEET 1 OF 1
	DR Debra Kelly 6-22-79	
	CHK E.P. 7-5-79	
	APPD E. Prosser L. Stauder	
MATERIAL	DSGN APPD	
FINISH	OTHER APPD	