



Chipsmall Limited consists of a professional team with an average of over 10 year of expertise in the distribution of electronic components. Based in Hongkong, we have already established firm and mutual-benefit business relationships with customers from,Europe,America and south Asia,supplying obsolete and hard-to-find components to meet their specific needs.

With the principle of “Quality Parts,Customers Priority,Honest Operation,and Considerate Service”,our business mainly focus on the distribution of electronic components. Line cards we deal with include Microchip,ALPS,ROHM,Xilinx,Pulse,ON,Everlight and Freescale. Main products comprise IC,Modules,Potentiometer,IC Socket,Relay,Connector.Our parts cover such applications as commercial,industrial, and automotives areas.

We are looking forward to setting up business relationship with you and hope to provide you with the best service and solution. Let us make a better world for our industry!



Contact us

Tel: +86-755-8981 8866 Fax: +86-755-8427 6832

Email & Skype: info@chipsmall.com Web: www.chipsmall.com

Address: A1208, Overseas Decoration Building, #122 Zhenhua RD., Futian, Shenzhen, China

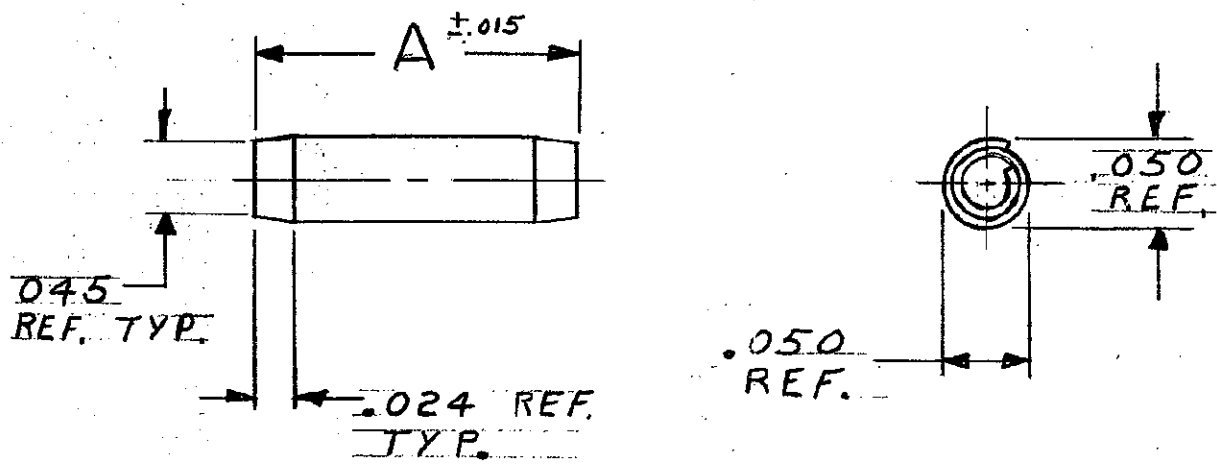


DRAWING MADE IN THIRD ANGLE PROJECTION

LOC DF DIST 55

THIS DRAWING IS UNPUBLISHED. RELEASED FOR PUBLICATION
 BY AMP INCORPORATED, HARRISBURG, PA. ALL INTERNATIONAL RIGHTS
 RESERVED. AMP PRODUCTS MAY BE COVERED BY U.S. AND FOREIGN PATENTS AND/OR PATENTS PENDING.

REVISIONS					
P	F	LTR	DESCRIPTION	DATE	APPROVED
✓	✓	0	RELEASED	M.S. 10-86	
		A	REV PER 0600-7298-98	JY 9-14-98	<i>DL</i>



⚠ SUPERSEDED BY 201501-2

	PASSIVATED	.140	531958-6
	PASSIVATED	.250	531958-4
⚠	PASSIVATED	.187	531958-2
REMARKS	FINISH	A	PART NO

UNLESS OTHERWISE SPECIFIED DIMENSIONS ARE IN INCHES. TOLERANCES ON: DECIMALS ±.005 ANGLES ±

MATERIAL
STAINLESS STEEL

FINISH
SEE TABLE

CONTRACT NO

DESIGNER *M. Smith* 10-9-86

CHECKER *J. P. Scholz* 10-9-86

APPD *J. P. Scholz* 10-9-86

APPR *J. P. Scholz* 10/1/86

DSGN APPD

OTHER APPD

AMP AMP INCORPORATED
Harrisburg, Pa. 17105

NAME SPIRAL PIN,
STANDARD DUTY

SIZE **A** FSCM NO **00779** DRAWING NO **531958**

SCALE # SHEET #