



Chipsmall Limited consists of a professional team with an average of over 10 year of expertise in the distribution of electronic components. Based in Hongkong, we have already established firm and mutual-benefit business relationships with customers from,Europe,America and south Asia,supplying obsolete and hard-to-find components to meet their specific needs.

With the principle of “Quality Parts,Customers Priority,Honest Operation,and Considerate Service”,our business mainly focus on the distribution of electronic components. Line cards we deal with include Microchip,ALPS,ROHM,Xilinx,Pulse,ON,Everlight and Freescale. Main products comprise IC,Modules,Potentiometer,IC Socket,Relay,Connector.Our parts cover such applications as commercial,industrial, and automotives areas.

We are looking forward to setting up business relationship with you and hope to provide you with the best service and solution. Let us make a better world for our industry!



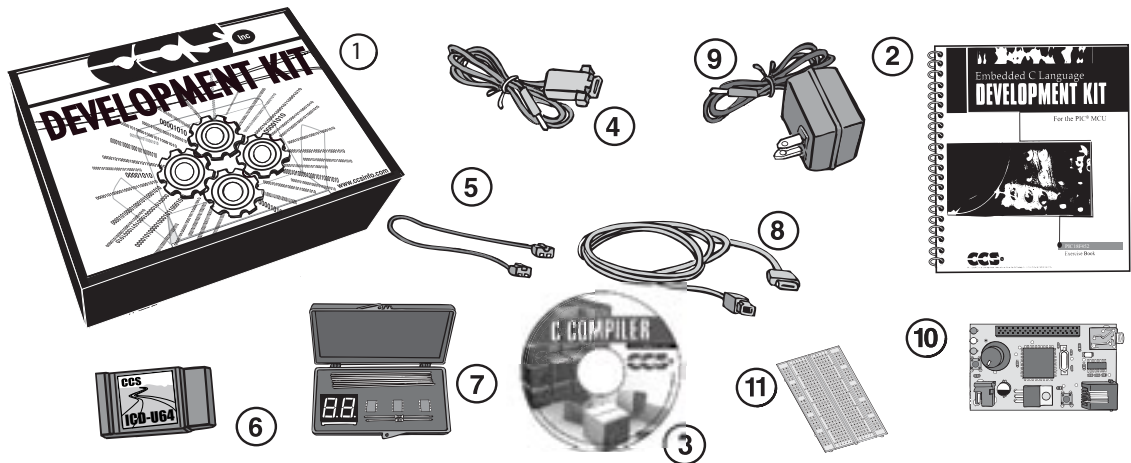
## Contact us

Tel: +86-755-8981 8866 Fax: +86-755-8427 6832

Email & Skype: info@chipsmall.com Web: www.chipsmall.com

Address: A1208, Overseas Decoration Building, #122 Zhenhua RD., Futian, Shenzhen, China





- ① Storage box
- ② Exercise booklet
- ③ CD-ROM of C compiler (optional)
- ④ Serial PC to Prototyping board cable
- ⑤ Modular ICD to Prototyping board cable
- ⑥ ICD unit for programming and debugging
- ⑦ Parts box includes:
  - 93LC56 serial EEPROM chip
  - DS1631 digital thermometer chip
  - NJU6355 real-time clock chip with attached 32kHz crystal
  - Two digit 7 segment LED module
  - Two 1K resistors
  - Jumpers to connect the Prototyping board to the breadboard
- ⑧ USB (or Serial) PC to ICD cable
- ⑨ AC Adaptor (9VDC)
- ⑩ Prototyping board with a PIC18F4520 processor chip  
(See inside front and back cover for details on the board layout and schematic)
- ⑪ Breadboard for prototyping circuits