



Chipsmall Limited consists of a professional team with an average of over 10 year of expertise in the distribution of electronic components. Based in Hongkong, we have already established firm and mutual-benefit business relationships with customers from,Europe,America and south Asia,supplying obsolete and hard-to-find components to meet their specific needs.

With the principle of “Quality Parts,Customers Priority,Honest Operation,and Considerate Service”,our business mainly focus on the distribution of electronic components. Line cards we deal with include Microchip,ALPS,ROHM,Xilinx,Pulse,ON,Everlight and Freescale. Main products comprise IC,Modules,Potentiometer,IC Socket,Relay,Connector.Our parts cover such applications as commercial,industrial, and automotives areas.

We are looking forward to setting up business relationship with you and hope to provide you with the best service and solution. Let us make a better world for our industry!



Contact us

Tel: +86-755-8981 8866 Fax: +86-755-8427 6832

Email & Skype: info@chipsmall.com Web: www.chipsmall.com

Address: A1208, Overseas Decoration Building, #122 Zhenhua RD., Futian, Shenzhen, China



3.3V Embedded Ethernet Development Kit



Development Kit Options			
Tools Included	w/Compiler	Hardware Only*	Proto-Board*
Skus	S-97	53321-755	53213-753
Compiler Software	●		
Programmer	●	●	
Prototyping board	●	●	●
Power supply & cables	●	●	
Exercise book	●	●	
Price			
Buy Now ➔	Add	Add	Add

*Hardware only and proto-boards are intended for customers already owning a CCS compiler.

The 3.3V Embedded Ethernet Development Kit features Microchip's PIC® PIC18F67J60. This kit includes the powerful PCWH Integrated Development Environment with compiler support for Microchip's PIC® PIC10, PIC12, PIC16 and PIC18 families and an ICD-U64 in-circuit programmer/debugger that supports C-aware real time debugging. The kit features a prototyping board operating at 10-base T speeds and includes an exercise book with a TCP/IP tutorial and step-by-step instructions to implement embedded ethernet programs.

Example Programs included:

- Complete Web Server
- Email Generator
- SD Card Read/Write

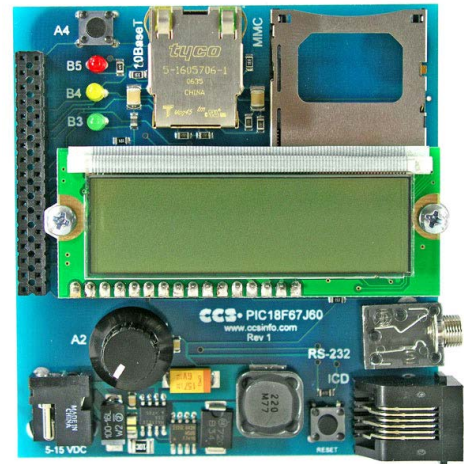
3.3V Embedded Ethernet Prototyping Board (Size: 3.25" x 3") includes:

- PIC18F67J60 (RAM 3808 Bytes, Flash 128K)
- 20 I/O Pins (2 Can Be Analog)
- 40 Mhz Clock to run at 10 MIPS
- Serial EEPROM (32 Kb)
- Multi-media SD card reader

- RS-232 port and RS-232 level converter
- One potentiometer
- One pushbutton
- Three LEDs
- ICD Jack
- All logic 3.3V from an AC Adapter or 9V Battery
- I/O Jumper Block with 20 Available Pins
- 10-BaseT Ethernet Jack

3.3V Embedded Ethernet Development Kit includes:

- 3.3V Embedded Ethernet Prototyping Board
- In-Circuit Debugger/Programmer
- Exercise Tutorial
- 9V AC Adapter and Cables



If you need to **quickly** and **inexpensively** ADD INTERNET CONDUCTIVITY to your product, visit

www.ezweblynx.com

Featuring a simple, small and very low cost Ethernet Integration Device.

The EZ Web Lynx unit is simply programmable in HTML or C code!

[Translate](#)

[Site Map](#)

[Contact CCS](#)

[Trademark Information](#)

Copyright © 2014 CCS, Inc.

