



Chipsmall Limited consists of a professional team with an average of over 10 year of expertise in the distribution of electronic components. Based in Hongkong, we have already established firm and mutual-benefit business relationships with customers from,Europe,America and south Asia,supplying obsolete and hard-to-find components to meet their specific needs.

With the principle of “Quality Parts,Customers Priority,Honest Operation,and Considerate Service”,our business mainly focus on the distribution of electronic components. Line cards we deal with include Microchip,ALPS,ROHM,Xilinx,Pulse,ON,Everlight and Freescale. Main products comprise IC,Modules,Potentiometer,IC Socket,Relay,Connector.Our parts cover such applications as commercial,industrial, and automotives areas.

We are looking forward to setting up business relationship with you and hope to provide you with the best service and solution. Let us make a better world for our industry!



Contact us

Tel: +86-755-8981 8866 Fax: +86-755-8427 6832

Email & Skype: info@chipsmall.com Web: www.chipsmall.com

Address: A1208, Overseas Decoration Building, #122 Zhenhua RD., Futian, Shenzhen, China



DWG. NO. SD-53397-***0

E

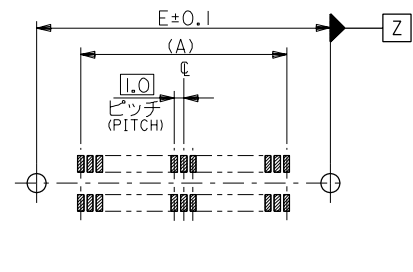
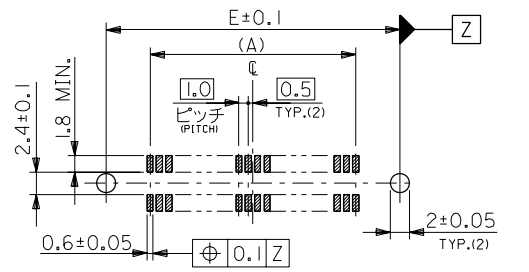
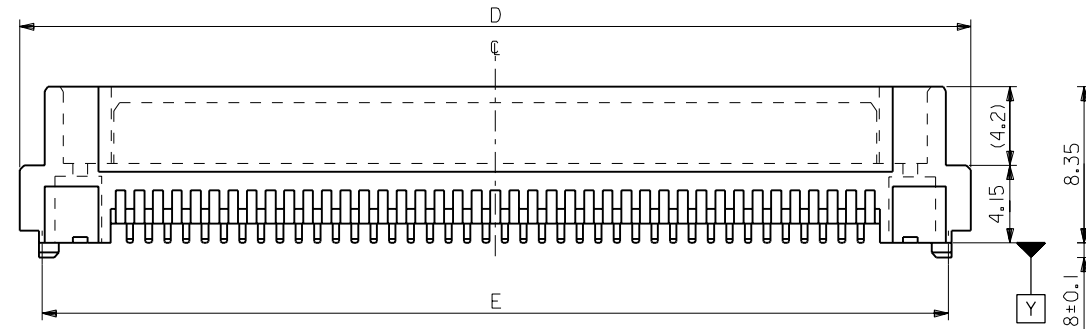
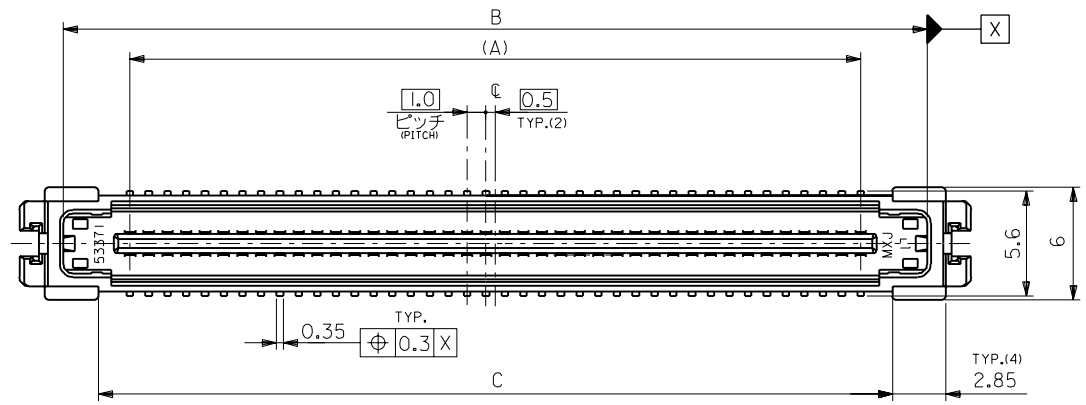
D

C

B

A

MM DIMENSIONS IN METRIC DO NOT SCALE DRAWING



推奨基板寸法(80, 84, 100, 120, 140極)
RECOMMENDED PCB PATTERN LAYOUT (80,84,100,120,140 CKTS.)
(SCALE 2-1)

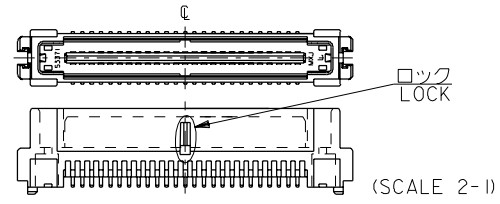
推奨基板寸法(50極)
RECOMMENDED PCB PATTERN LAYOUT (50 CKTS.)
(SCALE 2-1)

角度 ANGLE	±3°
30以上 OVER	+0.3
10以上 30未満 UNDER	+0.25
10未満 UNDER	+0.2

記号 LTR	変更内容 REVISION RECORD	DR. 日付 DATE	CHK. 日付 DATE
--------	----------------------	-------------	--------------

注) NOTES

- 材質 MATERIAL
ハウジング: ガラス入りLCP, 白色, UL94V-0
HOUSING: F.LCP, WHITE, UL94V-0
ターミナル: 燐青銅 (t=0.2)
TERMINAL: PHOSPHOR BRONZE
- メッキ仕様 PLATING
接点部: 金メッキ0.25µmMIN.
CONTACT AREA: GOLD 0.25µmMIN.
半田付け部: 半田メッキ1.0µmMIN.
SOLDER TAIL AREA: TIN-LEAD 1.0µmMIN.
下地メッキ: ニッケルメッキ 2.0µmMIN.
UNDER-PLATING: NICKEL 2.0µmMIN.
- 推奨基板厚 RECOMMENDED PCB THICKNESS
1.0±0.1mm MIN.
- テールのバラツキ寸法 TAIL COPLANARITY
テールは、Y面を基準とし、上へ0.02MAX.
下へ0.13MAX.とする。
TAIL COPLANARITY TO BE 0.02MAX. UPWARD AND 0.13MAX. DOWNWARD FROM Y-DATUM PLANE.
- ロックは、50極に設置する。
LOCK TO BE ADDED TO ONLY 50 CKTS.
- 梱包 PACKAGING
本製品はスティック梱包とし梱包後のENG. NO. は
53397-***9とする。
THIS PRODUCTS TO BE PACKED IN TUBE. ENG. NO.: 53397-***9
- 同一基板内に複数個(2個以上)の使用は避けてください。
MXJ DOES NOT RECOMMEND THE USAGE OF TWO OR MORE OF THESE CONNECTORS
BETWEEN A SINGLE PAIR OF P.C.B. BOARD.



78.4	80.8	72.4	76.02	69	53397-1400	140
68.4	70.8	62.4	66.02	59	53397-1200	120
58.4	60.8	52.4	56.02	49	53397-1000	100
50.4	52.8	44.4	48.02	41	53397-0840	84
48.4	50.8	42.4	46.02	39	53397-0800	80
33.4	35.8	27.4	31.02	24	53397-0500	50
E	D	C	B	(A)	ENG. NO.	極数 NO. OF CKTS.

材料 MATERIAL	注参照 SEE NOTES
E 変更 (140256) L.M. Y.i	仕上げ FINISH '94/5/0
D 変更 (140164) S.A. J.M	仕上げ FINISH '94/3/28
C 変更 (140044) S.A. J.M	適用電線範囲 WIRE RANGE '94/1/27
B 変更 (130355) J.M. Y.i	被覆外径 INS. RANGE '93/7/18
A 変更 (130299) J.M. Y.i	'93/6/11
O 新規作成 RELEASED (120452) L.M. M.S	'92/10/27
般公差 TOLERANCES	記号 LTR 変更内容 REVISION RECORD
	DR. 日付 DATE
	CHK. 日付 DATE
	APP'D BY 尺度 SCALE 4-1
	CHK'D BY 尺度 SCALE 4-1

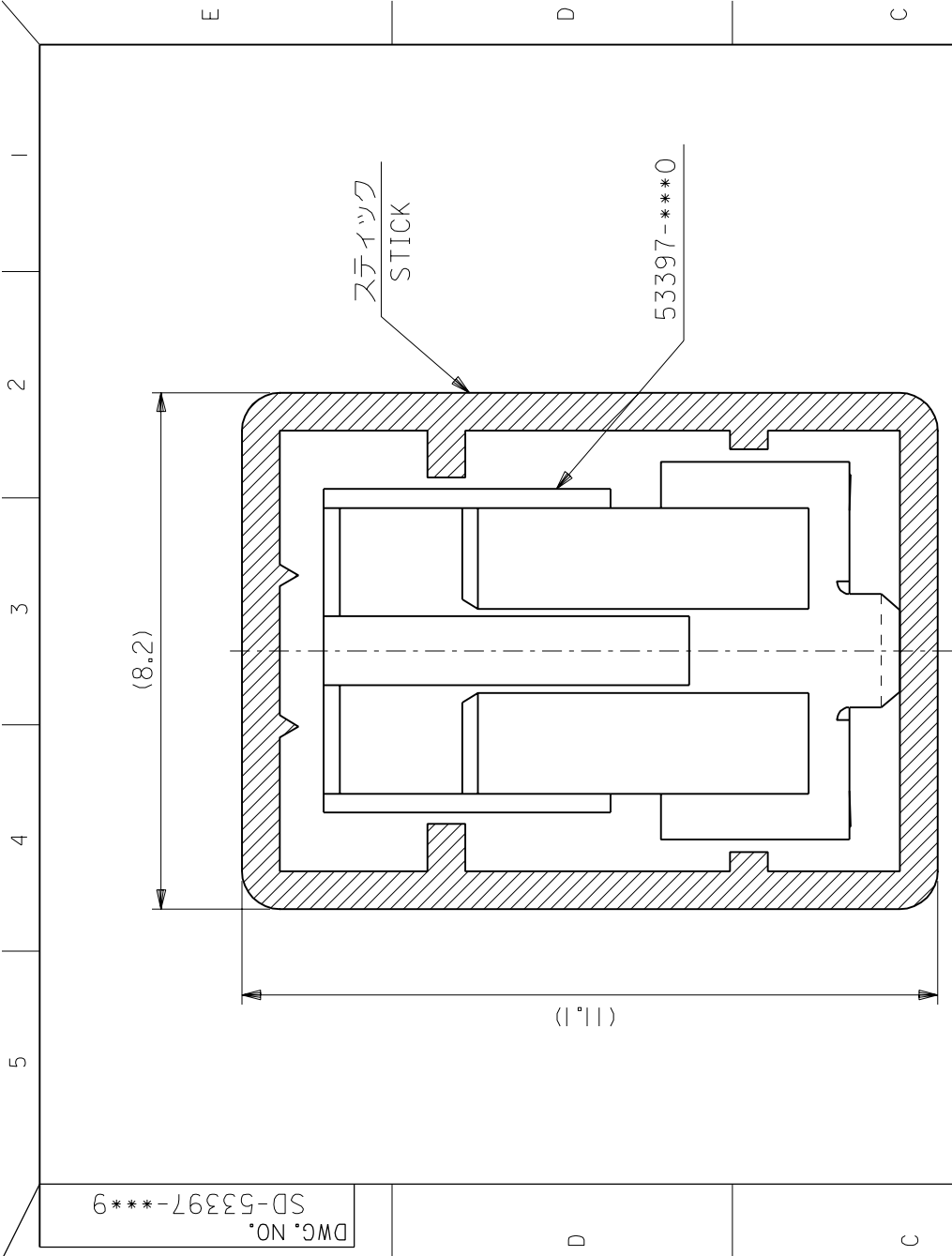
molex MOLEX-JAPAN CO.,LTD.
日本モレックス株式会社

REVISE ONLY ON CAD SYSTEM

TITLE 名称
I/O B-T0-B
S/T PLUG HS'G ASS'Y

DWG. NO. SD-53397-***0

REV E



DWG. NO. SD-53397-***9

注記
NOTES

1. スティック両端はキャップ止め。
BOTH ENDS WITH CAPS.
2. 全長: 600±2
TOTAL LENGTH
3. 肉厚: 0.6±0.2
THICKNESS

DIMENSIONS IN METRIC DO NOT SCALE DRAWING

角度	公差
30°以上	+0.3
10°以上 未満	+0.25
10°未満	+0.2

一般公差
GENERAL TOLERANCES

A :
B :
C :
D :
E :

7	53397-1409	140
8	53397-1209	120
9	53397-1009	100
10	53397-0849	84
11	53397-0809	80
15	53397-0509	50
梱包数 QUANTITY	ENG. No.	種数 NO. OF CKTS.

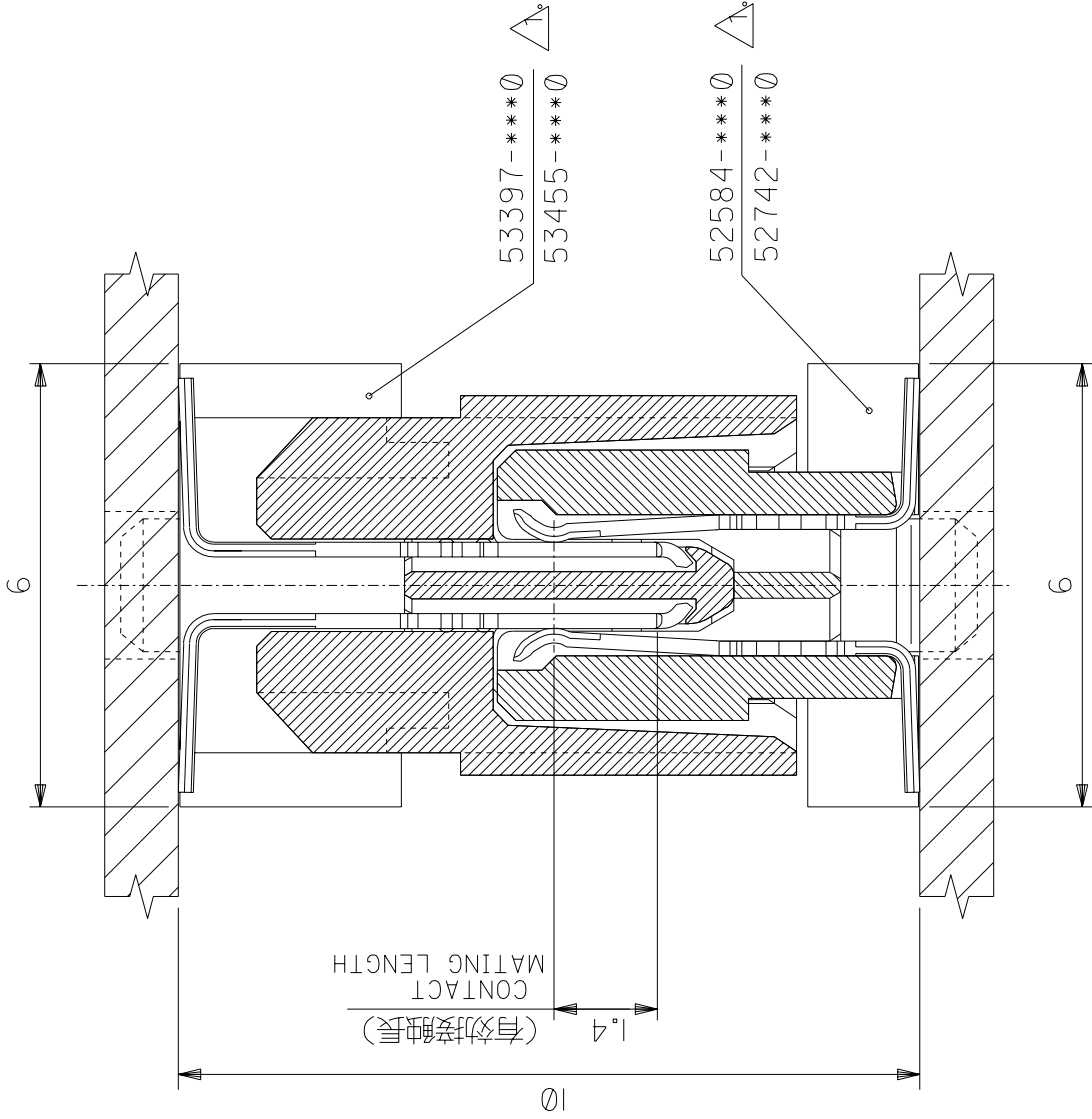
材料 MATERIAL	MOLEX-JAPAN CO.,LTD.		
スティック: ポリ塩化ビニル STICK : P.V.C	molex 日本モレックス株式会社		
仕上げ FINISH	REVISE ONLY ON CAD SYSTEM		
適用電線範囲 WIRE RANGE	TITLE 名称		
被覆外径 INS. RANGE	53397-***0		
DRAWN BY	STICK PACKAGING		
CHK'D BY	DWG. NO.		
APP'D BY	SD-53397-***9		
尺度	REV		
SCALE 10 - 1	D		

ZF3:110.037JP53397.DGN

THIS DRAWING CONTAINS INFORMATION THAT IS PROPRIETARY TO MOLEX(JAPAN) AND SHOULD NOT BE USED WITHOUT WRITTEN PERMISSION
本図面は日本モレックス(株)の所有する情報を含むもので 当社の許可なく複製を禁止する。

FN-010(037)MX.1-33

DWG. NO.
SD-53397-***0/52584-***0
SD-53455-***0/52742-***0



DIMENSIONS IN METRIC DO NOT SCALE DRAWING
: MM

角度	ANGLE	$\pm 3^\circ$
30以上	OVER	± 0.3
10以上	未満	± 0.25
30以上	未満	
10未満	UNDER	± 0.2
一般公差		
GENERAL TOLERANCES		

注記
NOTES

- 53397-***0 } ネール無し品
52584-***0 } WITHOUT NAIL
- 53455-***0 } ネール有り品
52742-***0 } WITH NAIL

材料 MATERIAL		— # —		MOLEX-JAPAN CO.,LTD. 日本モレックス株式会社	
仕上げ FINISH		— # —		REVISE ONLY ON CAD SYSTEM	
適用電線範囲 WIRE RANGE		— # —		TITLE 名称	
被覆外径 INS. RANGE		— # —		I.0 B-TO-B CONNECTOR 嵌合図 CROSS-SECTION VIEW OF MATED CONNECTORS	
変更 REVISED	(T40044)	S.A.	J.M.	CHK'D BY	REV
新規作成 RELEASED	(T20452)	J.M.	M.S.	M. Nagano	SD-53397-***0/52584-***0
変更内容 REVISION RECORD	DR.	日付 DATE	CHK.	SCALE	SD-53455-***0/52742-***0
LTR		10-1			A

THIS DRAWING CONTAINS INFORMATION THAT IS PROPRIETARY TO MOLEX(JAPAN) AND SHOULD NOT BE USED WITHOUT WRITTEN PERMISSION
本図面は日本モレックス(株)の所有する情報を含むもので当社の許可なく複製を禁止する。
FN-01C(032)MX-1-33

ZF3:110,031JSMG533970.DCN