



Chipsmall Limited consists of a professional team with an average of over 10 year of expertise in the distribution of electronic components. Based in Hongkong, we have already established firm and mutual-benefit business relationships with customers from,Europe,America and south Asia,supplying obsolete and hard-to-find components to meet their specific needs.

With the principle of “Quality Parts,Customers Priority,Honest Operation,and Considerate Service”,our business mainly focus on the distribution of electronic components. Line cards we deal with include Microchip,ALPS,ROHM,Xilinx,Pulse,ON,Everlight and Freescale. Main products comprise IC,Modules,Potentiometer,IC Socket,Relay,Connector.Our parts cover such applications as commercial,industrial, and automotives areas.

We are looking forward to setting up business relationship with you and hope to provide you with the best service and solution. Let us make a better world for our industry!



## Contact us

Tel: +86-755-8981 8866 Fax: +86-755-8427 6832

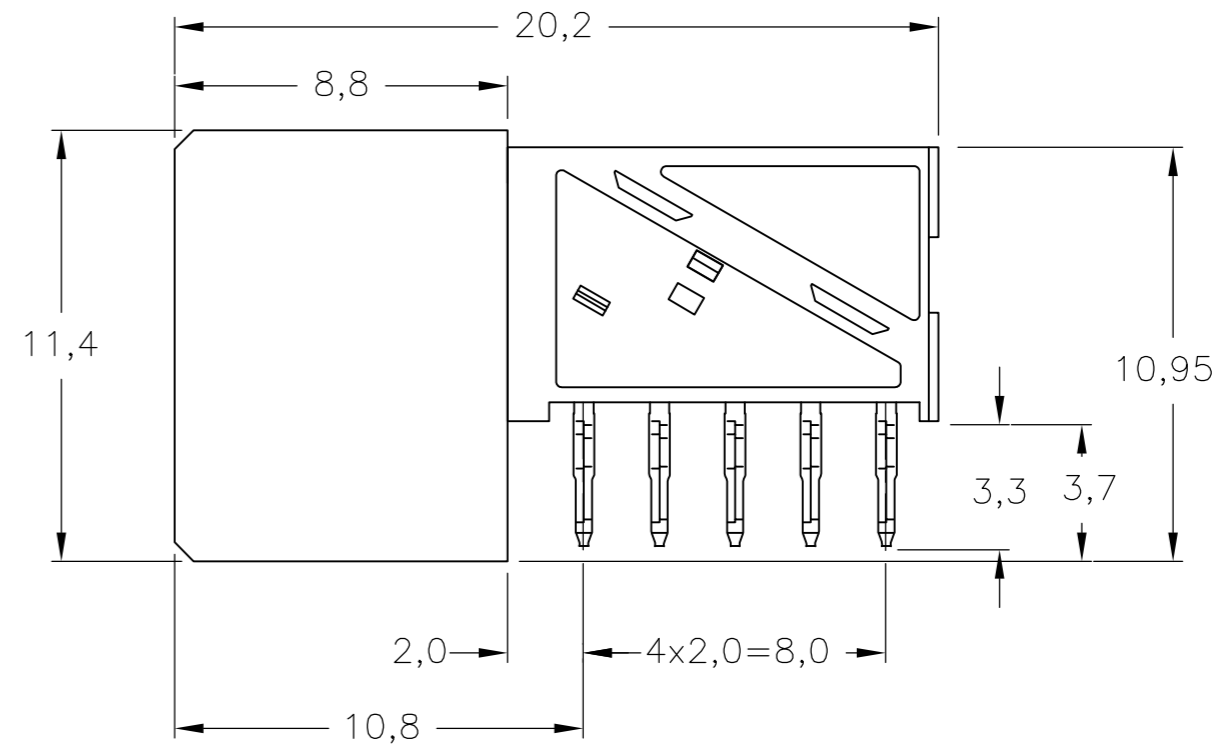
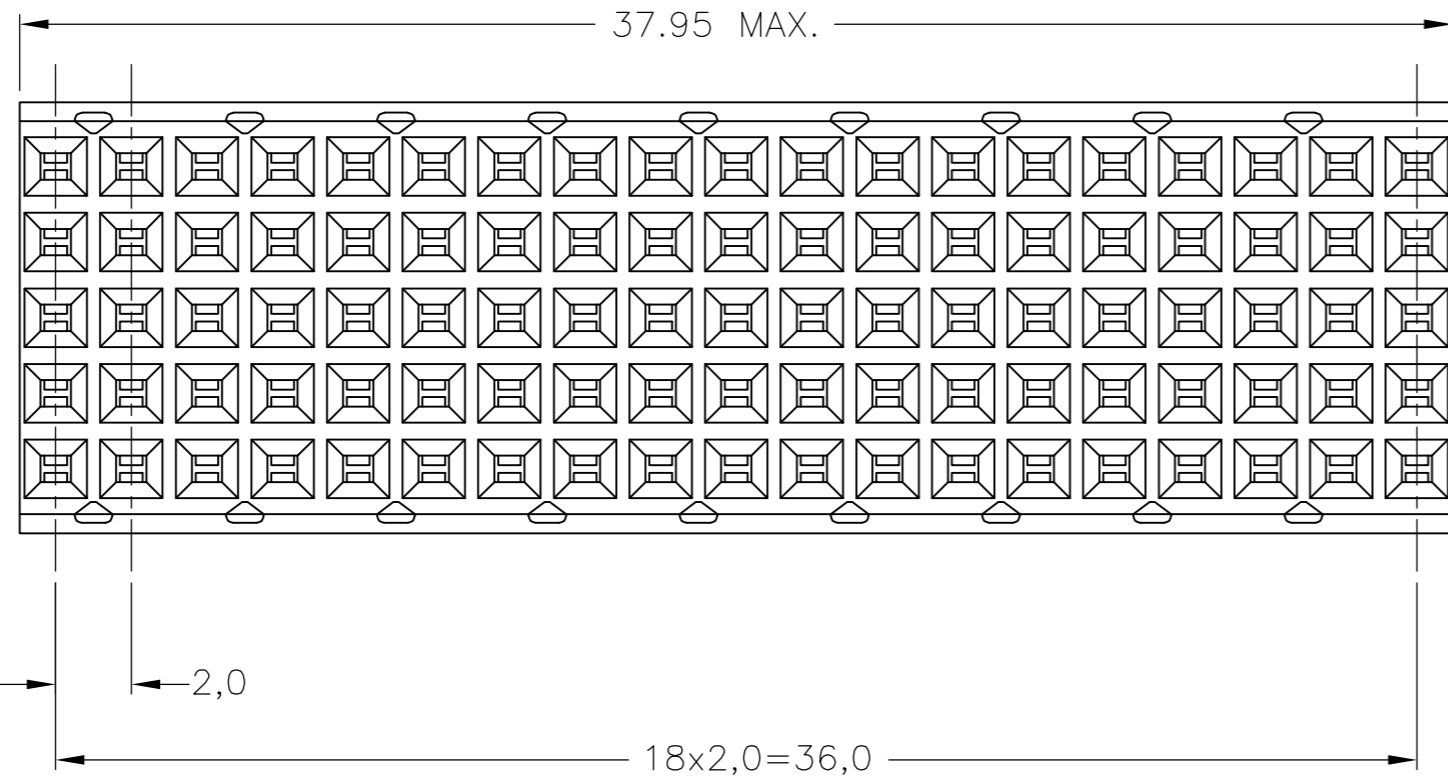
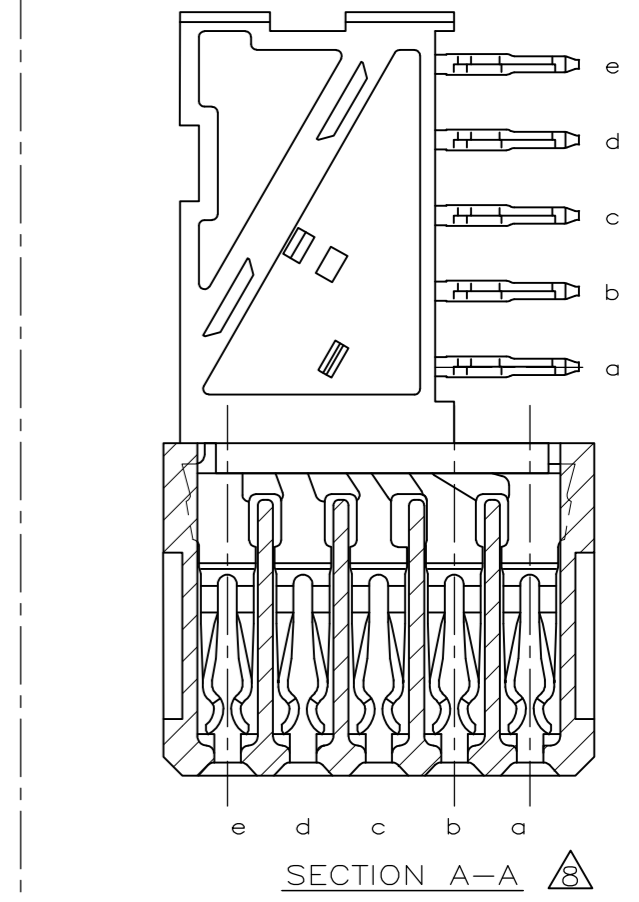
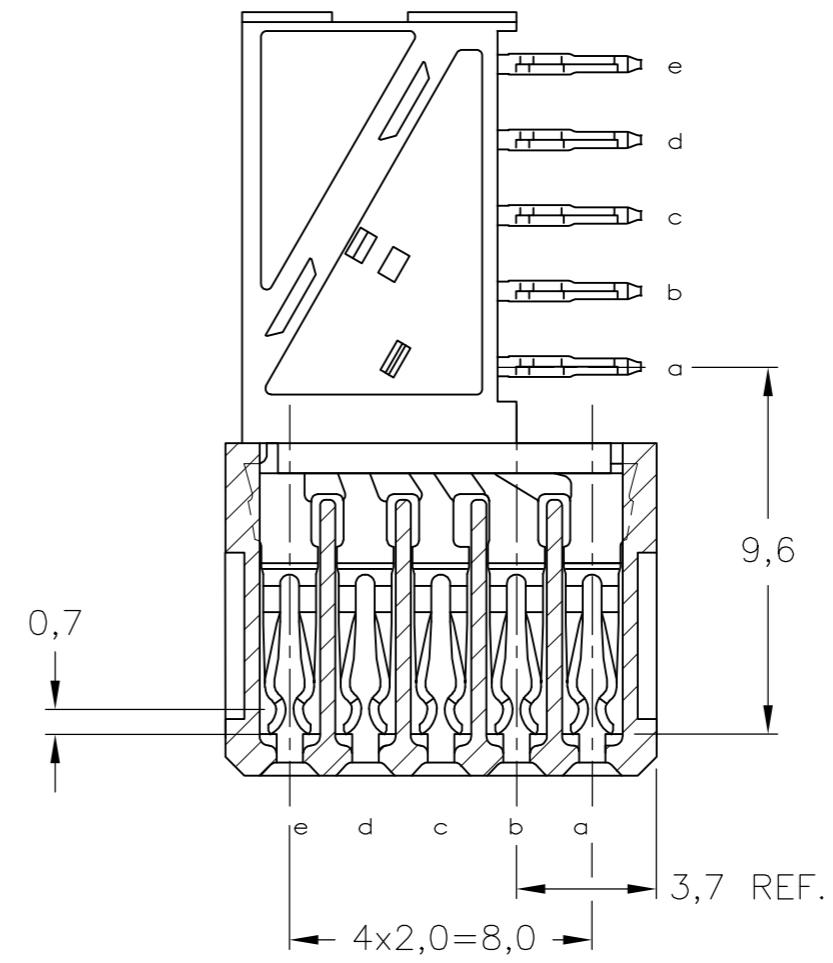
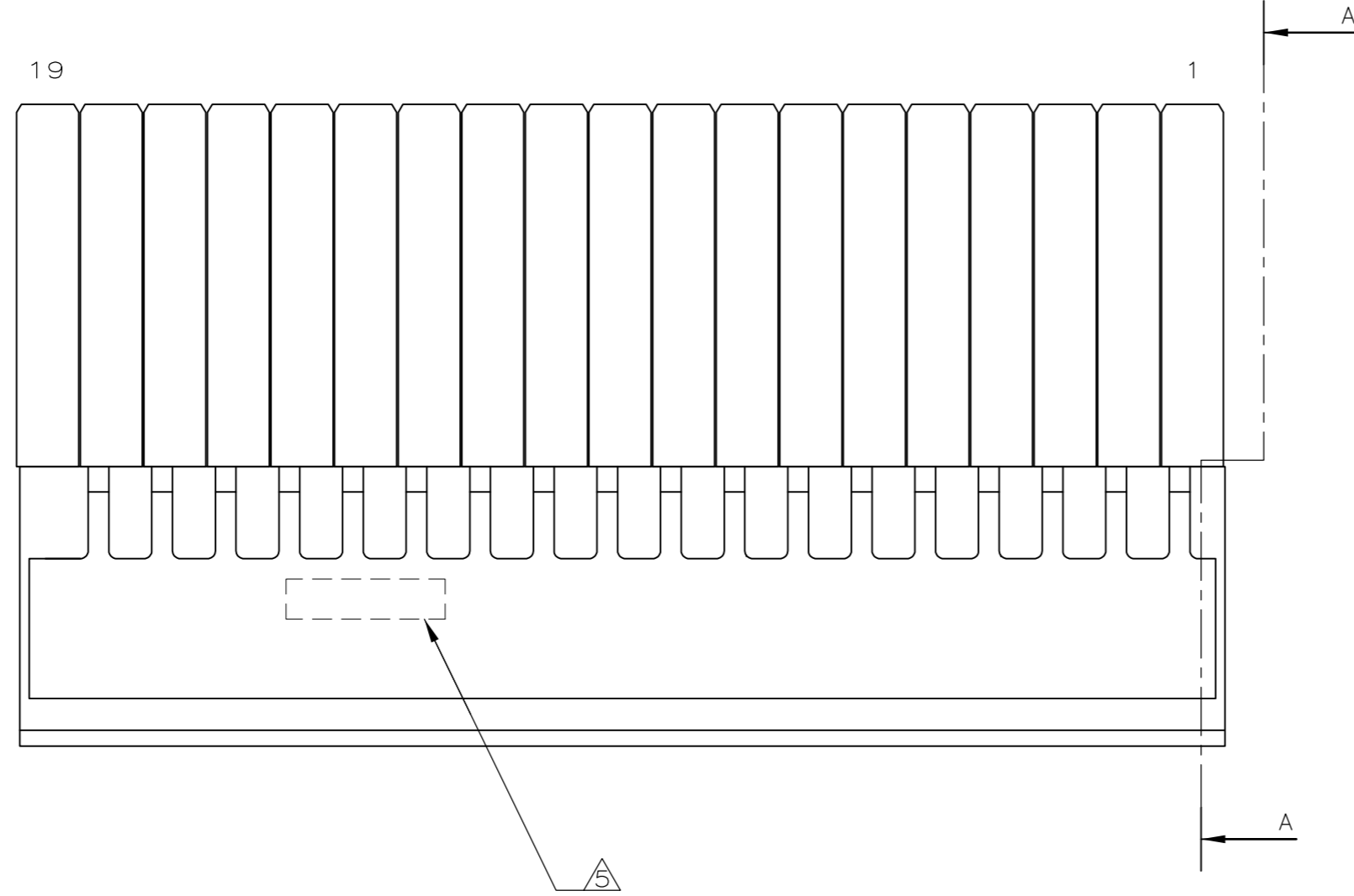
Email & Skype: info@chipsmall.com Web: www.chipsmall.com

Address: A1208, Overseas Decoration Building, #122 Zhenhua RD., Futian, Shenzhen, China



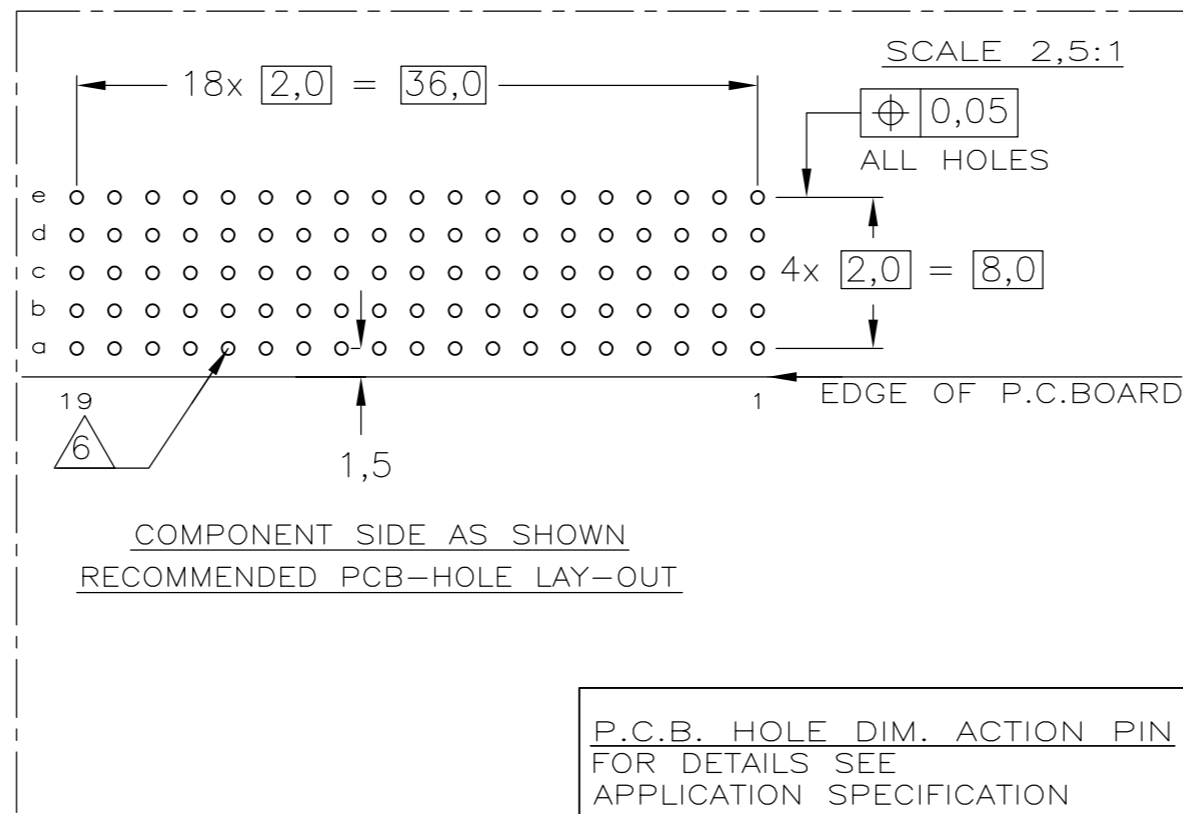
THIS DRAWING IS UNPUBLISHED. RELEASED FOR PUBLICATION  
 © COPYRIGHT BY TYCO ELECTRONICS CORPORATION. ALL RIGHTS RESERVED.

LOC		DIST		REVISIONS			
P	LTR	DESCRIPTION	DATE	DWN	APVD		
C		ECO-11-024491	13DEC11	SY	MQW		



**NOTES:**

- ⚠ MATERIAL CONTACT; PHOSPHORBRONZE
- ⚠ MATERIAL HOUSING; GLASSFILLED POLYESTER UL-RATING 94V0 (GRAY)
- ⚠ GENERAL PLATING SPECIFICATION: UNDERPLATING (ENTIRE CONTACT): 1,27µm NICKEL MIN. AND ACTION PIN: 0,5µm TIN MIN. FOR PLATING OF MATING SURFACES SEE APPLICABLE SPECIFICATION REFERENCE FOR EACH DASH NUMBER.
- ⚠ CONFORMS TO ALL TESTING ACCORDING IEC 61076-4-101 PERFORMANCE LEVEL 2.
- ⚠ CONFORMS TO ALL TESTING ACCORDING IEC 61076-4-101 PERFORMANCE LEVEL 1.
- ⚠ CONNECTOR PRINTED WITH PARTNUMBER AND DATECODE THE MARKING CAN APPEAR ON THE FRONT SIDE OR ON THE BACK SIDE.
- ⚠ PLATED-THROUGH HOLES AT 2x2mm SQUARE GRID. 95 HOLES
- ⚠ FITS WITH INTEGRATED GROUND RETURN UPSHIELD, BASIC P.N. 5352028 AND INTEGRATED GROUND RETURN LOWERSHIELD, BASIC P.N. 5352029
- ⚠ CONNECTOR ASSEMBLED WITH REDESIGNED CONTACTS. CONTACTS HAVE A CORING-OUT IN THE PLASTIC.



THIS DRAWING IS A CONTROLLED DOCUMENT.		DWN	13AUG2004	 Tyco Electronics Corporation 's-Hertogenbosch, 5222AR-32	5352009-4	⚠
DIMENSIONS: mm		CHK	22MAR2005		5352009-1	⚠
TOLERANCES UNLESS OTHERWISE SPECIFIED:		APVD	22MAR2005	FINISH		⚠
0 PLC ± -		NAME	B.MOOIJ	MATERIAL		⚠
1 PLC ± -		PRODUCT SPEC	108-19082	PARTNUMBER		⚠
2 PLC ± -		APPLICATION SPEC	114-19029	Z-PACK 2mm HM 95 POS. (19 COLUMNS) FEMALE DAUGHTER CARD CONNECTOR		
3 PLC ± -		WEIGHT	-	SIZE	CAGE CODE	DRAWING NO
4 PLC ± -		FINISH	-	A2	00779	C=5352009
ANGLES ± -		CUSTOMER DRAWING		SCALE	SHEET	OF
FINISH		SCALE 5:1		1	1	REV
P.C.B. HOLE DIM. ACTION PIN FOR DETAILS SEE APPLICATION SPECIFICATION		RESTRICTED TO		C		