



Chipsmall Limited consists of a professional team with an average of over 10 year of expertise in the distribution of electronic components. Based in Hongkong, we have already established firm and mutual-benefit business relationships with customers from,Europe,America and south Asia,supplying obsolete and hard-to-find components to meet their specific needs.

With the principle of “Quality Parts,Customers Priority,Honest Operation,and Considerate Service”,our business mainly focus on the distribution of electronic components. Line cards we deal with include Microchip,ALPS,ROHM,Xilinx,Pulse,ON,Everlight and Freescale. Main products comprise IC,Modules,Potentiometer,IC Socket,Relay,Connector.Our parts cover such applications as commercial,industrial, and automotives areas.

We are looking forward to setting up business relationship with you and hope to provide you with the best service and solution. Let us make a better world for our industry!



## Contact us

Tel: +86-755-8981 8866 Fax: +86-755-8427 6832

Email & Skype: info@chipsmall.com Web: www.chipsmall.com

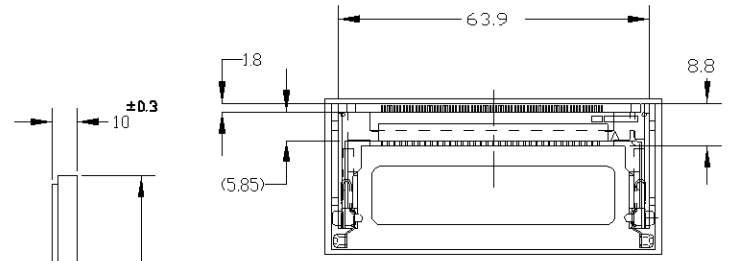
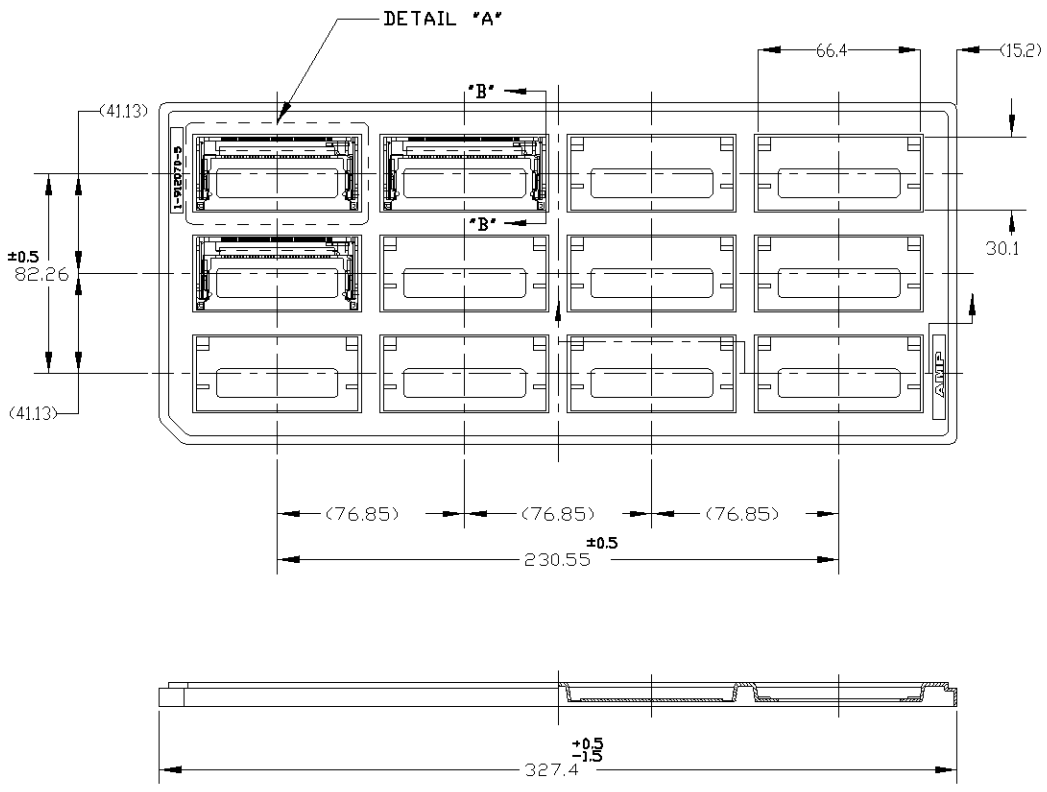
Address: A1208, Overseas Decoration Building, #122 Zhenhua RD., Futian, Shenzhen, China



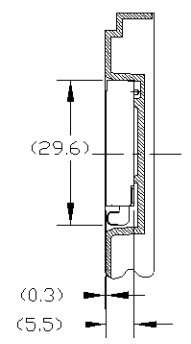
4  
THIS DRAWING IS UNPUBLISHED. RELEASED FOR PUBLICATION J1998  
© COPYRIGHT 1998 BY AMP INCORPORATED. ALL RIGHTS RESERVED.

2 1

LOC		REVISIONS				
P	LTR	DESCRIPTION	ECN	DATE	DWN	APVD
	0	RELEASED	ECR-05-001352	18/MAY/05	L.Z	I.E
	01	-	ECO-10-000444	22JAN10	KK	HMR



DETAIL "A"  
(SCALE 1:1)



SECTION "B"- "B"  
(SCALE 1:1)

5	OBSELETE	5V,Au,PL.	12	72	<del>5353869-3</del>
		3.3V,Au,PL.	12	72	5353869-1
	REMARKS	QTY	POS.	PART NO.	

THIS DRAWING IS A CONTROLLED DOCUMENT FOR AMP INCORPORATED. IT IS SUBJECT TO CHANGE AND THE CONTROLLING ENGINEERING ORGANIZATION SHOULD BE CONTACTED FOR THE LATEST REVISION.

DIMENSIONS: mm

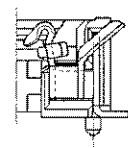
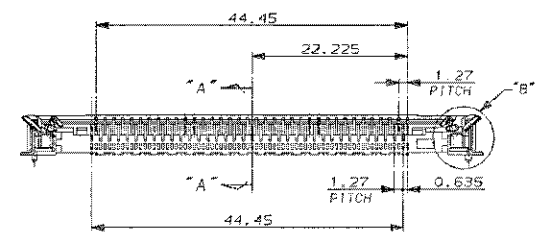
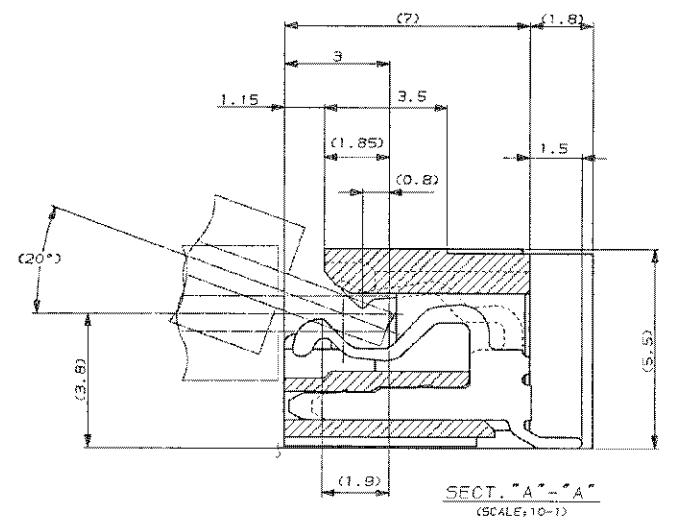
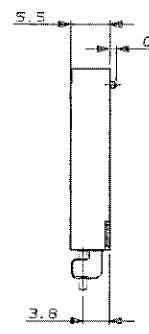
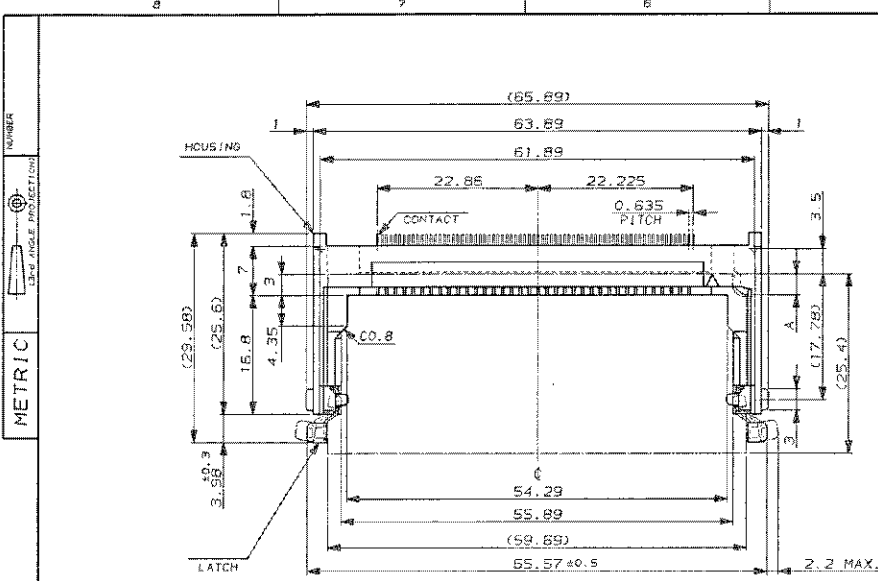
TOLERANCES UNLESS OTHERWISE SPECIFIED:  
 0-10 : ±0.2  
 10-20 : ±0.25  
 20-100 : ±0.3  
 ANGLE : ±0.3

MATERIAL: \_\_\_\_\_ FINISH: \_\_\_\_\_

DWN LED ZHOU 18/MAY/05  
 CHK STEVEN YAO 18/MAY/05  
 APVD TENDOMOTO 18/MAY/05  
 PRODUCT SPEC 108-5403  
 APPLICATION SPEC

CUSTOMER DRAWING

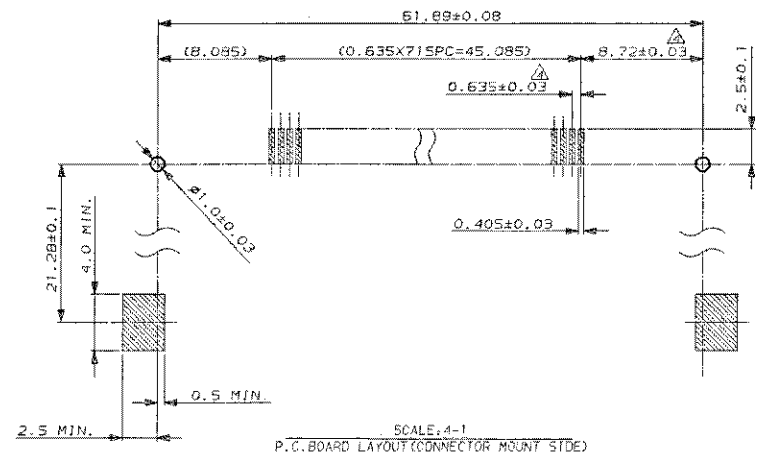
WIRE RANGE		INSULATION DIA			
Tyco Electronics AMP K.K. Kawasaki, Japan					
NAME: HARD TRAY MIII SOCKET					
SIZE: A3	CAGE CODE: 00779	DRAWING NO: 5353869	RESTRICTED TO: -		
SCALE: 1:2		SHEET: 1	OF: 3	REV: 01	



DETAIL "B"  
(SCALE: 5-1)

- NOTES
- MATERIAL & FINISH  
 HOUSING : GLASS FILLED LCP  
 CONTACT : COPPER ALLOY  
 LATCH : COPPER ALLOY, TIN PL.  
 CONTACT PLATING (AU PL. TYPE)  
 Au (0.3µm) PL. AT CONTACT, TIN PL. AT TINE OVER NI PL.  
 TOLERANCE : NON CUMULATIVE.

**5** OBSOLETE PARTS: OBSOLETE CIS STREAMLINING PER D.RENAUD/D.SINISI



BLACK	1.0	6.15	0.3µm Au	5353869-1
NATURAL	1.0	2.98	0.3µm Au	5353869-1
HOUSING COLOR	C	A	PLATING CONTACT POINTS	PART NO.

Copyright © 1993 AMP Incorporated, LTD. ALL RIGHTS RESERVED.		tyco Electronics		Tyco Electronics AMP S.p.A. Korovodolovo	
NAME HARD TRAY M III SOCKET		MATERIAL TOLERANCES C J		LOC No. C-5353869	
SCALE 2-1		REV. 01		SHEET 2 OF 3	

(CUSTOMER DRAWING)

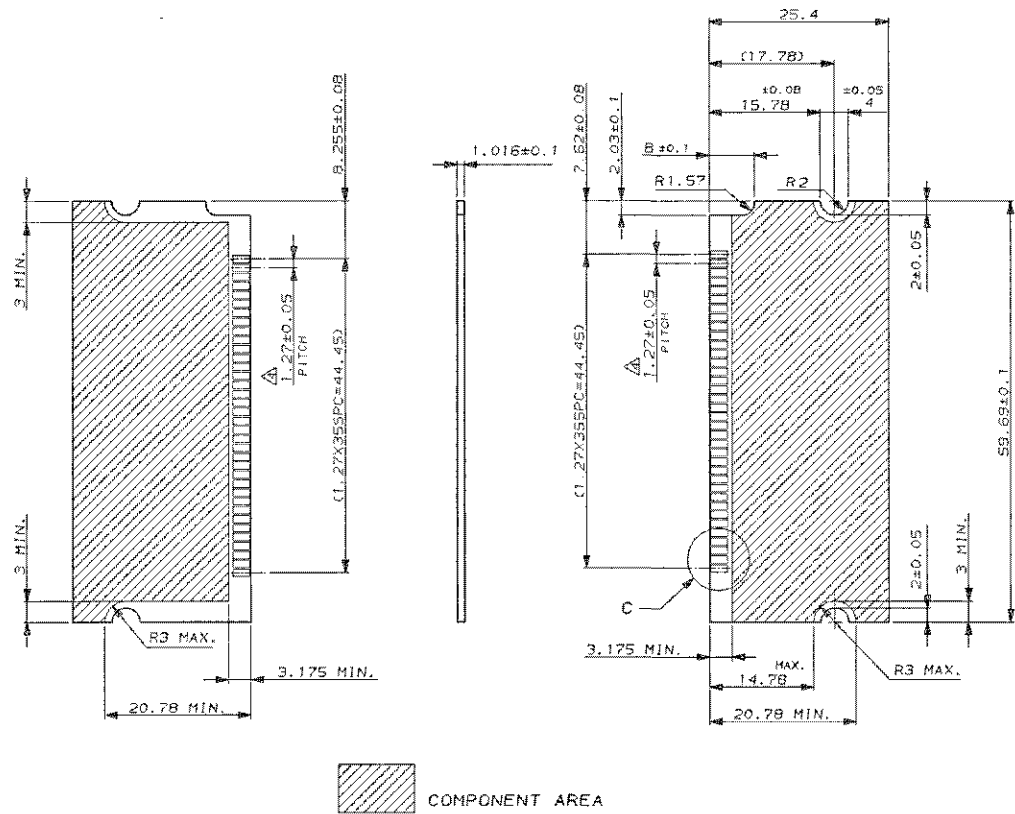
NUMBER



METRIC

ALL DIMENSIONS IN MM. DO NOT SCALE PRINT

PRINT DIST



RECOMMENDED DIMENSIONS OF "SMALL OUTLINE SIMM" P.C. BOARD

6.35	5.0V
3.175	3.3V
6	CIRCUIT VOLTAGE

Copyright ©1993 AMP Electronic, LTD. ALL RIGHTS RESERVED.		Type Electronics AMP P.P. Korea/Indo/Japan	
HARD TRAY M III SOCKET		C-5353888	
MATERIAL: SEE NOTES		FINISH: SEE NOTES	
GENERAL TOLERANCES:		LOC: J	
SCALE: 2-1		REV: 01	
SHEET: 3 OF 3			

(CUSTOMER DRAWING)