



Chipsmall Limited consists of a professional team with an average of over 10 year of expertise in the distribution of electronic components. Based in Hongkong, we have already established firm and mutual-benefit business relationships with customers from,Europe,America and south Asia,supplying obsolete and hard-to-find components to meet their specific needs.

With the principle of “Quality Parts,Customers Priority,Honest Operation,and Considerate Service”,our business mainly focus on the distribution of electronic components. Line cards we deal with include Microchip,ALPS,ROHM,Xilinx,Pulse,ON,Everlight and Freescale. Main products comprise IC,Modules,Potentiometer,IC Socket,Relay,Connector.Our parts cover such applications as commercial,industrial, and automotives areas.

We are looking forward to setting up business relationship with you and hope to provide you with the best service and solution. Let us make a better world for our industry!



## Contact us

Tel: +86-755-8981 8866 Fax: +86-755-8427 6832

Email & Skype: info@chipsmall.com Web: www.chipsmall.com

Address: A1208, Overseas Decoration Building, #122 Zhenhua RD., Futian, Shenzhen, China



PRODUCT NUMBER

5 3 6 1 1 - X X X - X X X X LF

PLATING

S=15μ [0.38μm] GOLD ON CONTACT AREA (NOTE 12)  
100μ [2.54μm] TIN ON TAIL

G=30μ [0.76μm] GOLD (NOTE 12)  
ON CONTACT AREA  
100μ [2.54μm] PURE TIN ON TAIL

LEAD FREE OPTION  
NOTE 9,10

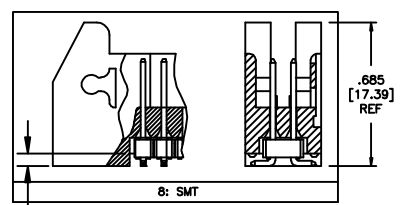
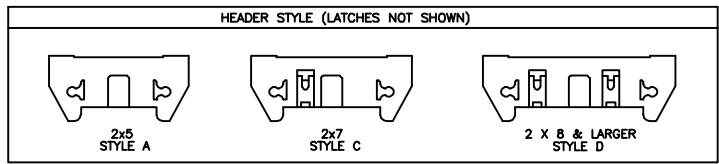
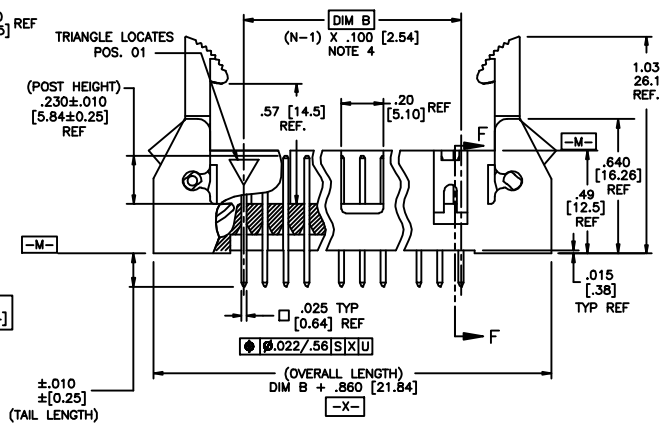
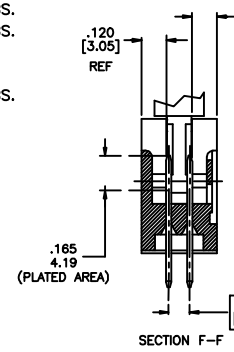
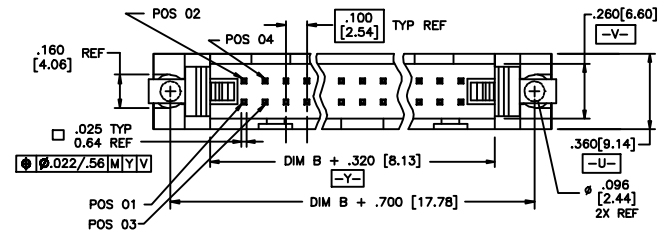
RETENTION  
R= RETENTION LEG  
NOTE 5

POLARIZATION  
NOTE 8

TAIL LENGTH

1	= .085 / 2.16	OBS.
2	= .112 / 2.84	OBS.
4	= .120 / 3.05	
6	= .150 / 3.81	
7	= .675 / 17.15	OBS.
8	= SMT	

DASH NO.	POSITIONS	HEADER STYLE
10	2 X 5	A
14	2 X 7	C
16	2 X 8	D
20	2 X 10	D
26	2 X 13	D
34	2 X 17	D
40	2 X 20	D
50	2 X 25	D



.060 [1.52] REF

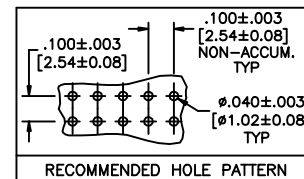
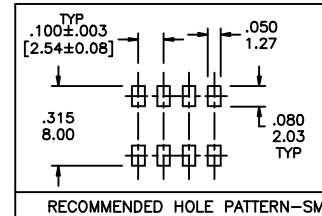
mat'l. code		surface ISO 902		tolerance ISO 406		projection		product family	
ISO 1101		✓		ISO 1101		INCH/MM		QUICKIE	
tolerances unless otherwise specified		linear		angular		scale 1:1		title	
D V02309 MEM 9/11/00		.XX±.01/.XX±0.3		0° ± 2'		INCH/MM		.100/2.54cc EJECT LATCH	
E C10004 MDF 2/26/01		.XXX±.005/.XXX±0.13						SHOROUNDED VERTICAL HEADER	
F M05-0089 ERE 5/20/05		.XXX±.0020/.XXX±0.05						dwg no sheet 1 of 2 size	
G M07-0116 AGS 2/19/07		dr		D. INGRAM 7/12/99		FCJ		53611 A3	
H M08-0010 MHT 1/11/08		engr		L. GREEN 7/21/99					
J M08-0237 MHT 8/26/08		chr		L. GREEN 7/21/99					
K M08-0273 MHT 9/26/08		appd		L. GREEN 7/21/99				type Product Customer Drawing	
sheet revision K K									
index sheet 1 2									



Copyright FCI

NOTES:

- ① HOUSING MAT'L: HIGH TEMPERATURE THERMOPLASTIC. UL94V-0.  
COLOR : BLACK
- ② PIN MATERIAL: PHOSPHOR-BRONZE
- ③ 3 LBS/1.36 KG MIN. RETENTION.
- ④ TO DETERMINE DIMENSIONS:  
N = NUMBER OF POSITIONS.  
EXAMPLE: 10 POS., (N-1) x .100[2.54]=.900[22.87]
- ⑤ RETENTIVE LEG:  
RETENTIVE LEG APPLICABLE TO TAIL LENGTH .120/3.05 ONLY.  
RETENTION IS APPLIED TO FOUR PINS ON PART SIZES OF 2x14 AND SMALLER,  
AND APPLIED TO EIGHT PINS ON PARTS SIZES OF 2x15 AND LARGER.  
5LB/2.3KG MAX INSERTION FORCE AND .25LB./1KG MIN RETENTION FORCE  
PER RETENTIVE PIN USING .062/1.57 THICK CIRCUIT BOARD AND RECOMMENDED  
HOLE PATTERN. RETENTIVE LOCATION AT THE DISCRETION OF THE MANUFACTURER.  
OMIT FROM PRODUCT NUMBER IF THIS FEATURE IS NOT APPLICABLE.
- 6. PACKAGED IN TRAYS.
- 7. UNDERPLATING: 50μ"/1.27μm Ni.
- ⑧ FOR POLARIZATION, SPECIFY POSITION NUMBER (i.e.. 03= PIN 3) TO OMIT PIN.  
OMIT FROM PRODUCT NUMBER IF THIS FEATURE IS NOT APPLICABLE.
- ⑨ ADD "LF" SUFFIX AT THE END OF PART NUMBER FOR LEAD FREE OPTION.
- ⑩ THIS PRODUCT MEETS EUROPEAN UNION DIRECTIVES AND OTHER  
COUNTRY REGULATION AS DESCRIBED IN GS-22-008.
- 11. THE HOUSING WILL WITHSTAND EXPOSURE TO 260°C PEAK TEMPERATURE  
FOR 15 SECONDS IN A WAVE SOLDER APPLICATION WITH A 1.5mm  
MINIMUM THICK CIRCUIT BOARD. SEE APPLICATION NOTES/PROCEDURES  
IF THEY ARE AVAILABLE.  
  
THE HOUSING WILL WITHSTAND EXPOSURE TO 260°C PEAK TEMPERATURE  
FOR 20 SECONDS IN A CONVECTION, INFRA-RED OR VAPOR PHASE REFLOW  
OVEN. SEE APPLICATION NOTES/PROCEDURES IF THEY ARE AVAILABLE.
- ⑫ PLATING OPTIONS:  
MAY BE EITHER GOLD OR GXT PLATED AT MANUFACTURER'S OPTION.



mat'l code		surface ISO 802		tolerance ISO 406 ISO 1101		projection		product family QUICKIE	
ltr	ecn no	dr	date	tolerances unless otherwise specified					
K				angles	linear	.XX±.01/XX±0.3	INCH/MM		title
				0°±2'		.XXX±.005/XXX±0.13	scale 1:1		.100/2.54cc EJECT LATCH SHOROUNDED VERTICAL HEADER
				dr	D. INGRAM	7/12/99	FCJ		dwg no
				engr	L. GREEN	7/21/99	sheet 2 of 2 size		53611 A3
				chr	L. GREEN	7/21/99	type		Product Customer Drawing
				appd	L. GREEN	7/21/99			
sheet index	revision sheet								

FCJ  
FCConnect.com

Copyright FCJ