



Chipsmall Limited consists of a professional team with an average of over 10 year of expertise in the distribution of electronic components. Based in Hongkong, we have already established firm and mutual-benefit business relationships with customers from,Europe,America and south Asia,supplying obsolete and hard-to-find components to meet their specific needs.

With the principle of “Quality Parts,Customers Priority,Honest Operation,and Considerate Service”,our business mainly focus on the distribution of electronic components. Line cards we deal with include Microchip,ALPS,ROHM,Xilinx,Pulse,ON,Everlight and Freescale. Main products comprise IC,Modules,Potentiometer,IC Socket,Relay,Connector.Our parts cover such applications as commercial,industrial, and automotives areas.

We are looking forward to setting up business relationship with you and hope to provide you with the best service and solution. Let us make a better world for our industry!



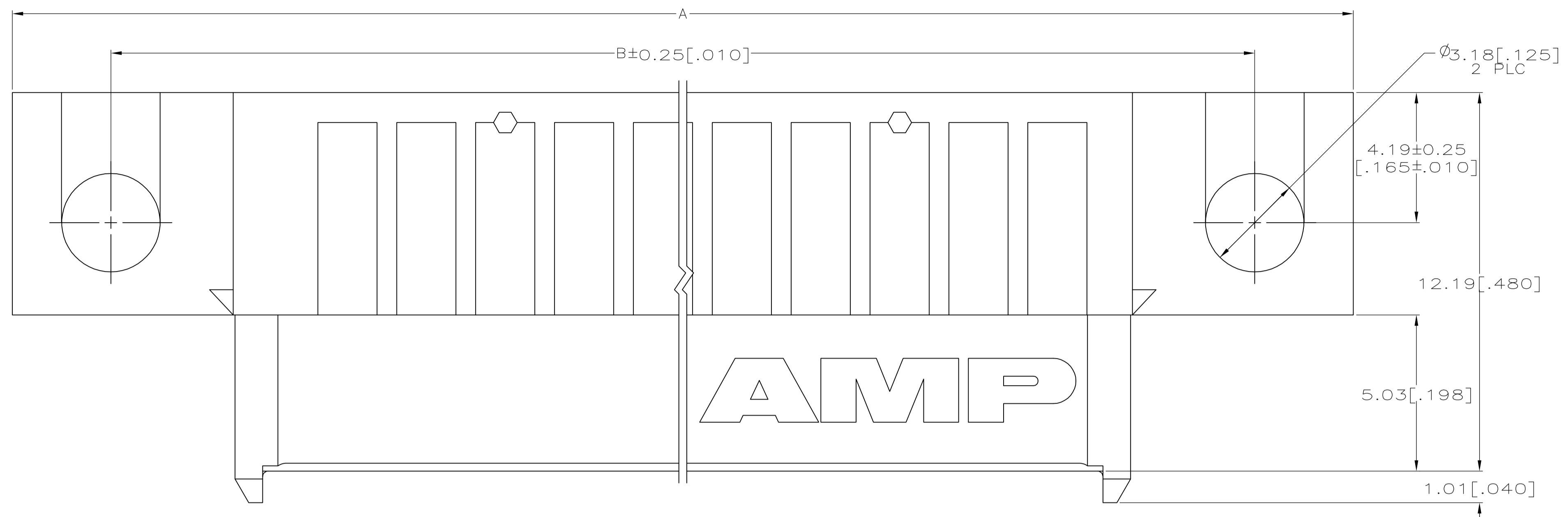
## Contact us

Tel: +86-755-8981 8866 Fax: +86-755-8427 6832

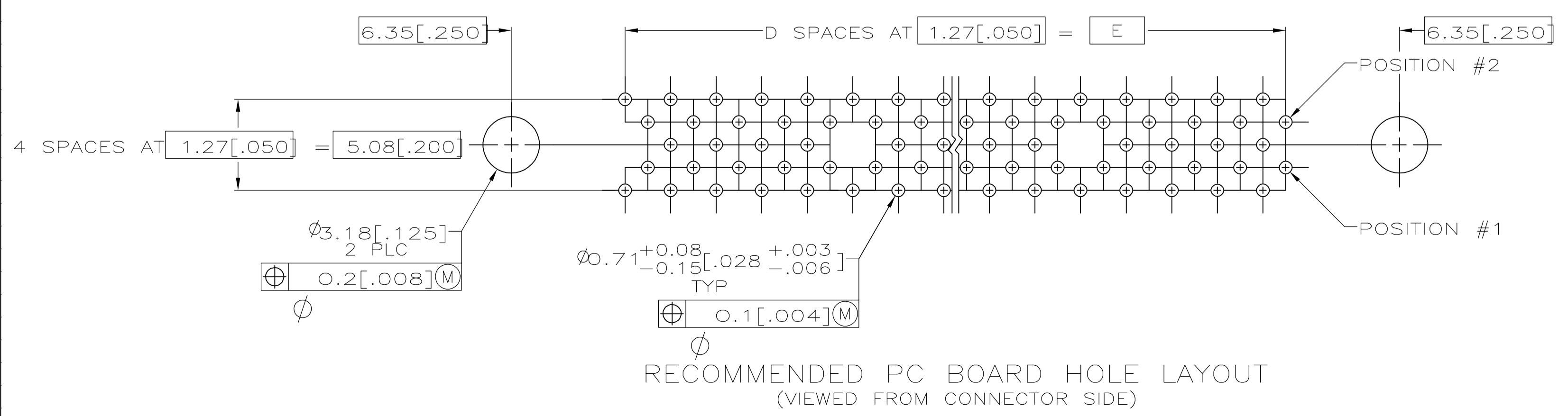
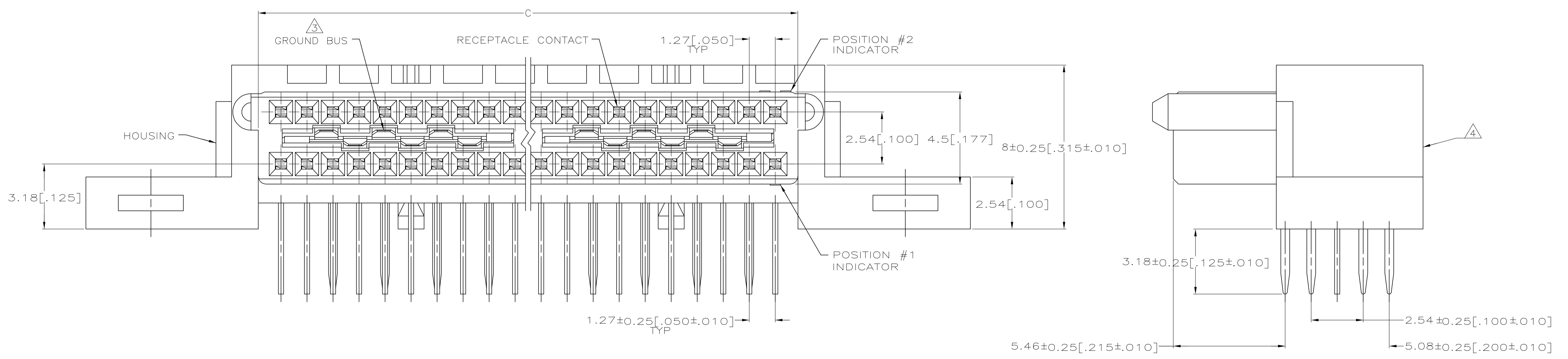
Email & Skype: info@chipsmall.com Web: www.chipsmall.com

Address: A1208, Overseas Decoration Building, #122 Zhenhua RD., Futian, Shenzhen, China





- 1 MOLDING PARTS: HIGH TEMPERATURE THERMOPLASTIC, COLOR NATURAL.  
RECEPTACLE CONTACTS: PHOSPHOR BRONZE.  
GROUND BUSSES: PHOSPHOR BRONZE.
- 2 RECEPTACLE CONTACTS: 0.00076[.000030] MIN GOLD IN CONTACT AREA, 0.00254-0.00762[.000100-.000300] TIN-LEAD ON SOLDER TAIL, ALL OVER 0.00127-0.00254[.000050-.000100] NICKEL ON ENTIRE CONTACT.  
GROUND BUSSES: 0.00076[.000030] MIN GOLD IN CONTACT AREA, 0.00254-0.00762[.000100-.000300] TIN-LEAD ON SOLDER TAIL, ALL OVER 0.00127-0.00254[.000050-.000100] NICKEL ON ENTIRE BUS.
- 3 ONE GROUND BUS WITH 4 TAILS PER EACH 20 RECEPTACLE CONTACTS.
- 4 ASSEMBLIES 140 POSITIONS OR SMALLER HAVE A ONE PIECE ORGANIZER. ASSEMBLIES 160 POSITIONS OR LARGER HAVE MULTIPLE ORGANIZERS OF 40 AND/OR 60 POSITIONS.



OBSOLETE	151.13[5.950]	119	153.34[6.037]	163.83[6.450]	170.18[6.700]	240	1-536297-1
OBSOLETE	138.43[5.450]	109	140.64[5.537]	151.13[5.950]	157.48[6.200]	220	1-536297-0
	125.73[4.950]	99	127.94[5.037]	138.43[5.450]	144.78[5.700]	200	536297-9
OBSOLETE	113.03[4.450]	89	115.24[4.537]	125.73[4.950]	132.08[5.200]	180	536297-8
OBSOLETE	100.33[3.950]	79	102.54[4.037]	113.03[4.450]	119.38[4.700]	160	536297-7
	87.63[3.450]	69	89.84[3.537]	100.33[3.950]	106.68[4.200]	140	536297-6
	74.93[2.950]	59	77.14[3.037]	87.63[3.450]	93.98[3.700]	120	536297-5
	62.23[2.450]	49	64.44[2.537]	74.93[2.950]	81.28[3.200]	100	536297-4
	49.53[1.950]	39	51.74[2.037]	62.23[2.450]	68.58[2.700]	80	536297-3
	36.83[1.450]	29	39.04[1.537]	49.53[1.950]	55.88[2.200]	60	536297-2
	24.13[.950]	19	26.34[1.037]	36.83[1.450]	43.18[1.700]	40	536297-1
	E	D	C	B	A	NO OF POS	PART NUMBER

THIS DRAWING IS A CONTROLLED DOCUMENT.

DIMENSIONS: mm [INCHES]	TOLERANCES UNLESS OTHERWISE SPECIFIED:	DIN J GERACE 1-4-93	tyco Electronics Tyco Electronics Corporation Harrisburg, PA 17105-3608
Ø ± .013[.005]	0 PLC ± -	CIK 1-4-93	NAME
Ø ± .013[.005]	1 PLC ± -	APVD D SINISI 1-4-93	RECEPTACLE ASSEMBLY, RIGHT
Ø ± .013[.005]	2 PLC ± -	PRODUCT SPEC	ANGLE, 3.18[.125] TAIL,
Ø ± .013[.005]	3 PLC ± -	APPLICATION SPEC	BOARD TO BOARD, MICRO-STRIP
Ø ± .013[.005]	4 PLC ± -	SIZE	SIZE
Ø ± .013[.005]	ANGLES ± -	CODE	CODE
		DRAWING NO	DRAWING NO
		WEIGHT	WEIGHT
		SCALE	SCALE
		SHEET	SHEET
		OF	OF
		REV	REV

CUSTOMER DRAWING SCALE 10:1 SHEET 1 OF 1 REV K1