



Chipsmall Limited consists of a professional team with an average of over 10 year of expertise in the distribution of electronic components. Based in Hongkong, we have already established firm and mutual-benefit business relationships with customers from,Europe,America and south Asia,supplying obsolete and hard-to-find components to meet their specific needs.

With the principle of “Quality Parts,Customers Priority,Honest Operation,and Considerate Service”,our business mainly focus on the distribution of electronic components. Line cards we deal with include Microchip,ALPS,ROHM,Xilinx,Pulse,ON,Everlight and Freescale. Main products comprise IC,Modules,Potentiometer,IC Socket,Relay,Connector.Our parts cover such applications as commercial,industrial, and automotives areas.

We are looking forward to setting up business relationship with you and hope to provide you with the best service and solution. Let us make a better world for our industry!



## Contact us

Tel: +86-755-8981 8866 Fax: +86-755-8427 6832

Email & Skype: [info@chipsmall.com](mailto:info@chipsmall.com) Web: [www.chipsmall.com](http://www.chipsmall.com)

Address: A1208, Overseas Decoration Building, #122 Zhenhua RD., Futian, Shenzhen, China



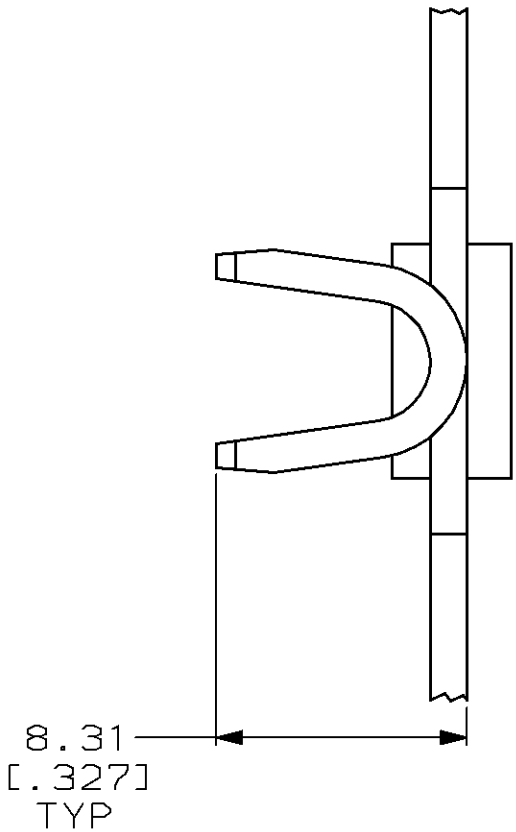
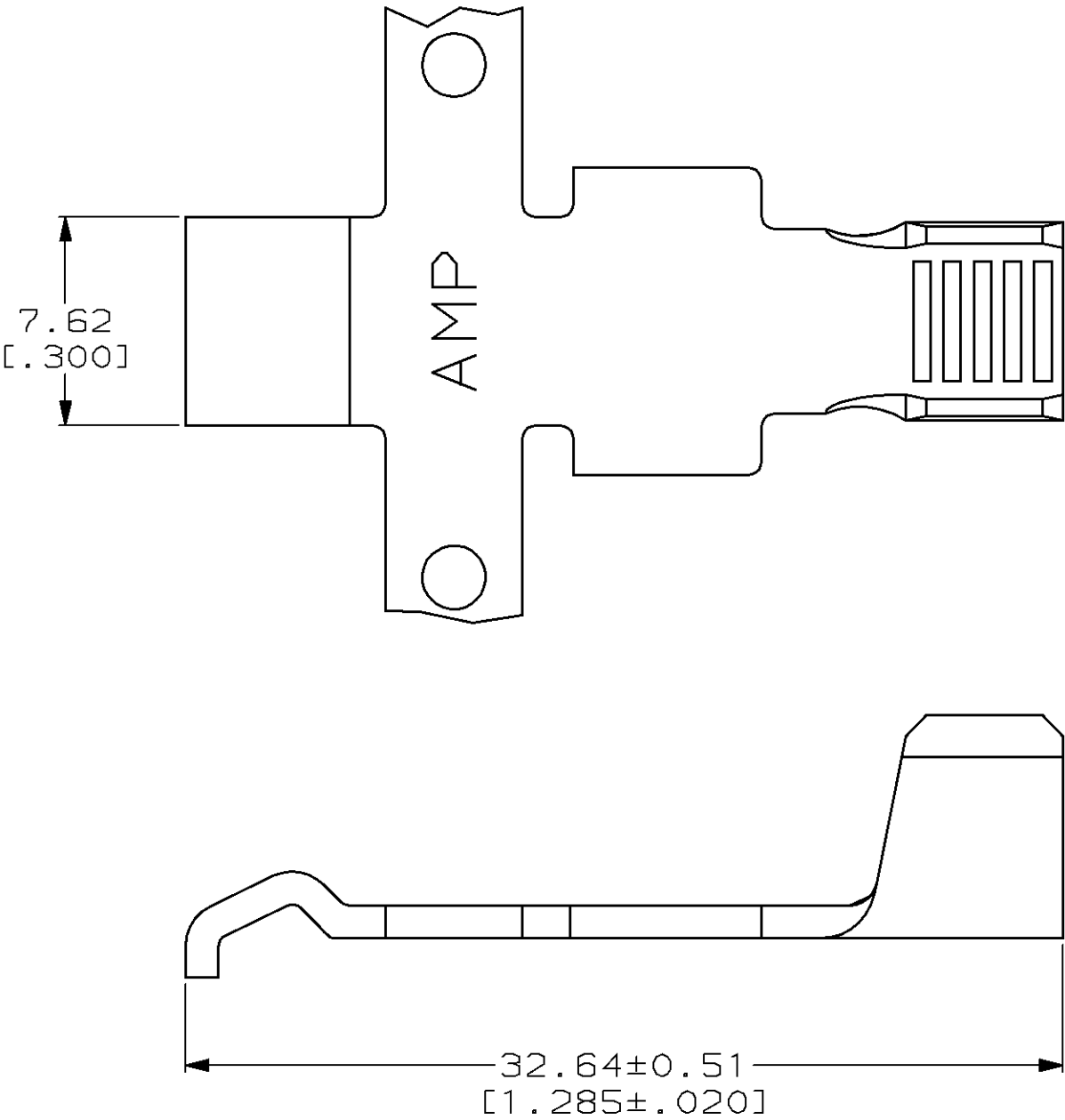
4

3

2

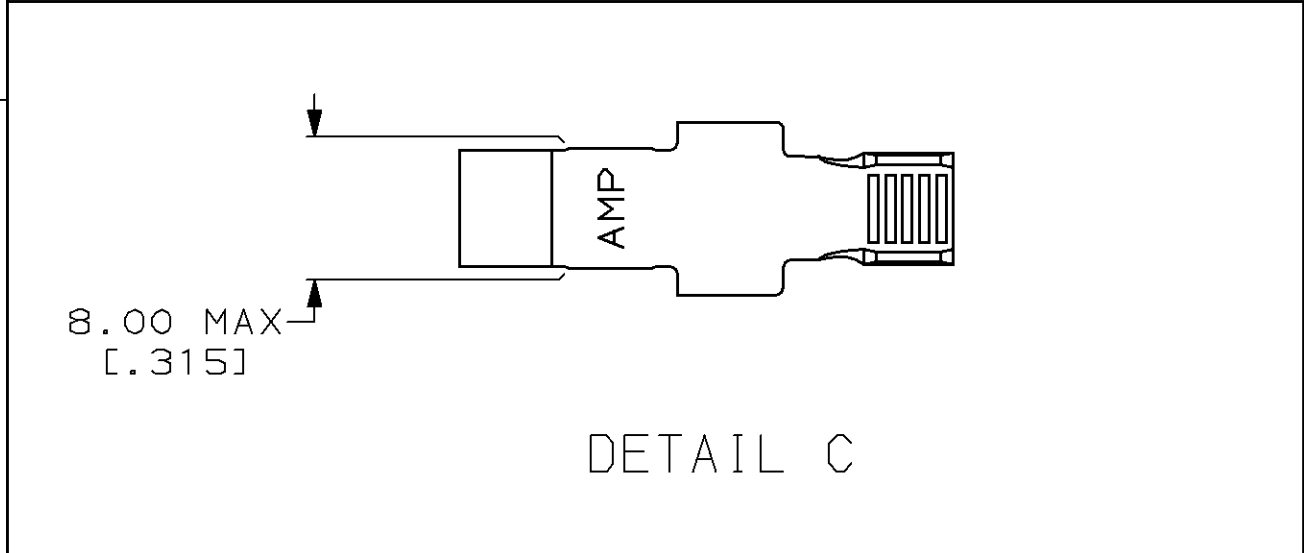
1

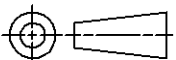
LOC	DIST	REVISIONS					
		P	LTR	DESCRIPTION	DATE	DWN	APVD
FT	60		M	REDRAWN & REV PER EC 0320-74-97	15 APR 97	-	-



1. CONTACT ACCEPTS 10-6 AWG WIRE & TO BE USED WITH HOUSING 53884.

SEE DETAIL C	53880-4
-	53880-2
LOOSE PIECE	PART NUMBER



THIS DRAWING IS A CONTROLLED DOCUMENT.		DWN M.BINNER	15 APR 97	<b>AMP</b> AMP Incorporated Harrisburg, PA 17105-3608				
		CHK R.STONE	24 APR 97					
DIMENSIONS: mm [INCHES]		APVD M.MCALONIS	22 MAY 97	NAME				
		PRODUCT SPEC 108-11043	CONTACT, SERIES 2, POWER LOCK					
		APPLICATION SPEC 114-6032						
		SIZE				CAGE CODE	DRAWING NO	RESTRICTED TO
		A3				00779	C-53880	—
MATERIAL COPPER		WEIGHT —	CUSTOMER DRAWING			SCALE 4:1	SHEET 1 OF 1	REV M
		FINISH 5.08µm [.000200] MIN SILVER						
		TOLERANCES UNLESS OTHERWISE SPECIFIED: 0 PLC ±— 1 PLC ±— 2 PLC ±0.38 [.015] 3 PLC ±— 4 PLC ±— ANGLES ±—						