



Chipsmall Limited consists of a professional team with an average of over 10 year of expertise in the distribution of electronic components. Based in Hongkong, we have already established firm and mutual-benefit business relationships with customers from,Europe,America and south Asia,supplying obsolete and hard-to-find components to meet their specific needs.

With the principle of “Quality Parts,Customers Priority,Honest Operation,and Considerate Service”,our business mainly focus on the distribution of electronic components. Line cards we deal with include Microchip,ALPS,ROHM,Xilinx,Pulse,ON,Everlight and Freescale. Main products comprise IC,Modules,Potentiometer,IC Socket,Relay,Connector.Our parts cover such applications as commercial,industrial, and automotives areas.

We are looking forward to setting up business relationship with you and hope to provide you with the best service and solution. Let us make a better world for our industry!



Contact us

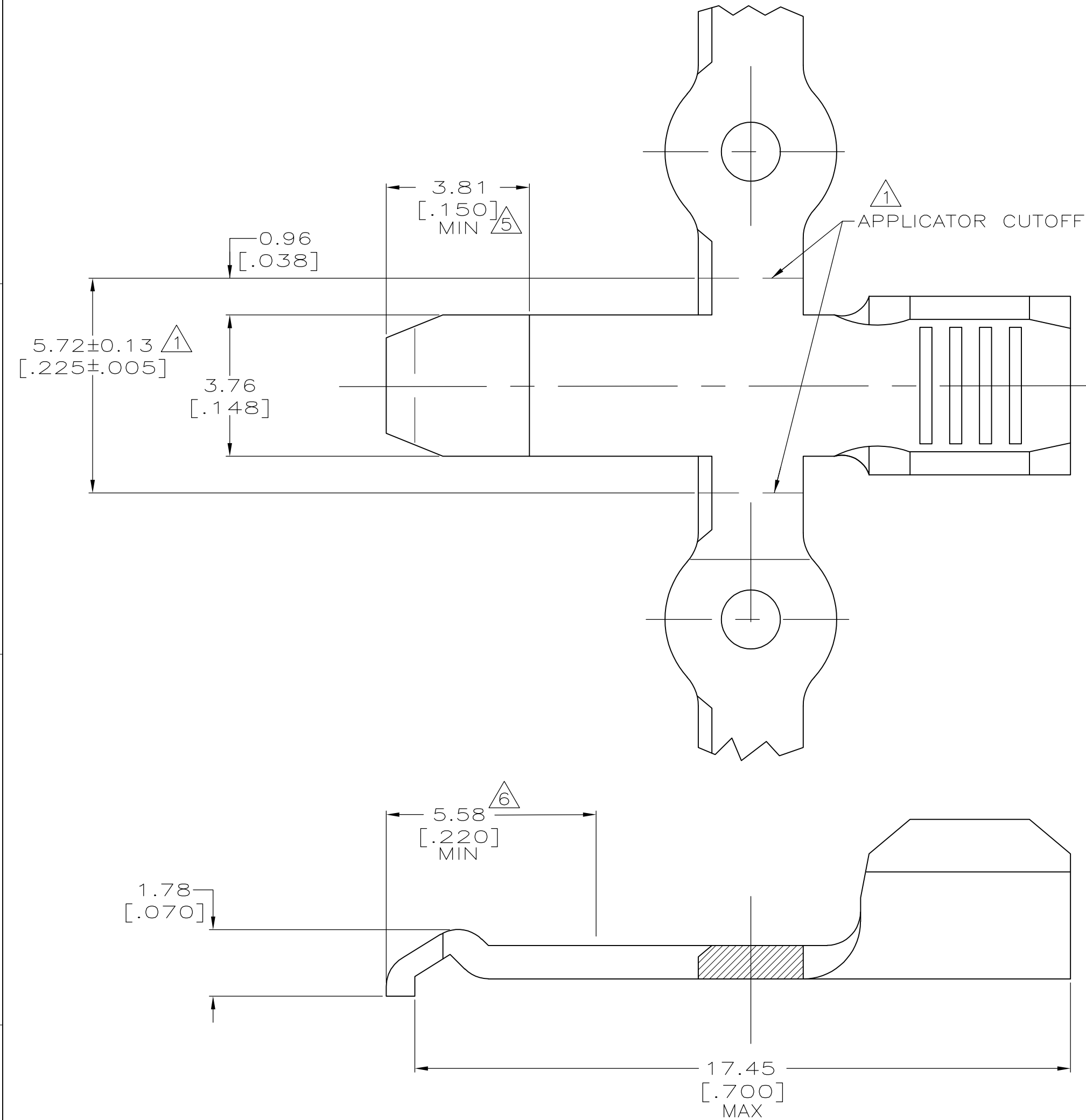
Tel: +86-755-8981 8866 Fax: +86-755-8427 6832

Email & Skype: info@chipsmall.com Web: www.chipsmall.com

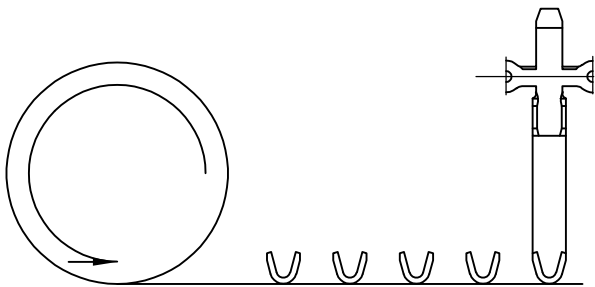
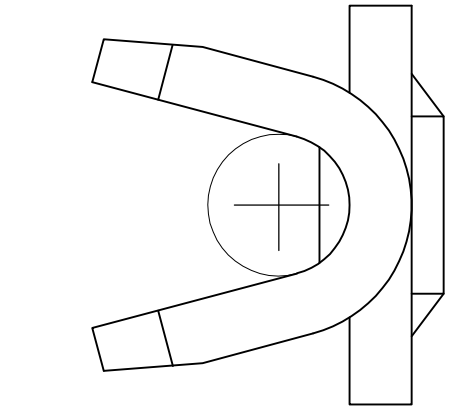
Address: A1208, Overseas Decoration Building, #122 Zhenhua RD., Futian, Shenzhen, China



LOC	DIST	REVISIONS				
FT	60	P	LTR	DESCRIPTION	DATE	OWN
			M1	REVISED PER ECO-11-004820	11MAR11	RK
						HMR



- 1 REFER TO AMP INSTRUCTION SHEET IS 2928 FOR APPLICATOR AND CUTOFF DETAILS.
- 2 MATERIAL: COPPER
- 3 FINISH: 0.05 [.000200] MINIMUM THICK SILVER PLATING.
- 4 FINISH: 0.00076 [.000030] MINIMUM THICK GOLD PLATING OVER 0.00127 [.000050] MINIMUM THICK NICKEL PLATING.
- 5 FINISH: 0.00076 [.000030] MINIMUM THICK GOLD PLATING OVER TOP SURFACE INDICATED AND GOLD FLASH OVER REMAINING SURFACES OVER 0.00127 [.000050] MINIMUM NICKEL PLATING.
- 6 TOP SURFACE IS GRAPHITE COATED IN AREA INDICATED.



DIRECTION OFF OF REEL INTO THE APPLICATOR

SCALE: NONE

SUPERSEDED BY -2	<u>3</u> <u>6</u>	STRIP	1-53892-1
	<u>5</u>	STRIP	53892-8
	<u>4</u>	LOOSE PIECE	53892-7
	<u>3</u>	LOOSE PIECE	53892-4
	<u>3</u>	STRIP	53892-2
FINISH		DESCRIPTION	PART NO

THIS DRAWING IS A CONTROLLED DOCUMENT.		DWN K TILLMAN/UTA 3-21-94	TE Connectivity	
DIMENSIONS: MM [INCHES]		CHK D. HUSSEY 3-23-94		
TOLERANCES UNLESS OTHERWISE SPECIFIED:		APVD D. KEMPKA 3-23-94	NAME	
0 PLC \pm -		PRODUCT SPEC	CONTACT, CRIMP BARREL, SERIES 1, POWER LOCK	
1 PLC \pm -		108-11026		
2 PLC \pm 0.20 [.008]		APPLICATION SPEC	SIZE	
3 PLC \pm -		114-6032	CAGE CODE	
4 PLC \pm -		WEIGHT	DRAWING NO	
ANGLES \pm 5°		-	RESTRICTED TO	
FINISH		CUSTOMER DRAWING	SCALE 10:1	
SEE TABLE			SHEET 1 of 1	
			REV M1	