



Chipsmall Limited consists of a professional team with an average of over 10 year of expertise in the distribution of electronic components. Based in Hongkong, we have already established firm and mutual-benefit business relationships with customers from,Europe,America and south Asia,supplying obsolete and hard-to-find components to meet their specific needs.

With the principle of "Quality Parts,Customers Priority,Honest Operation,and Considerate Service",our business mainly focus on the distribution of electronic components. Line cards we deal with include Microchip,ALPS,ROHM,Xilinx,Pulse,ON,Everlight and Freescale. Main products comprise IC,Modules,Potentiometer,IC Socket,Relay,Connector.Our parts cover such applications as commercial,industrial, and automotives areas.

We are looking forward to setting up business relationship with you and hope to provide you with the best service and solution. Let us make a better world for our industry!



## Contact us

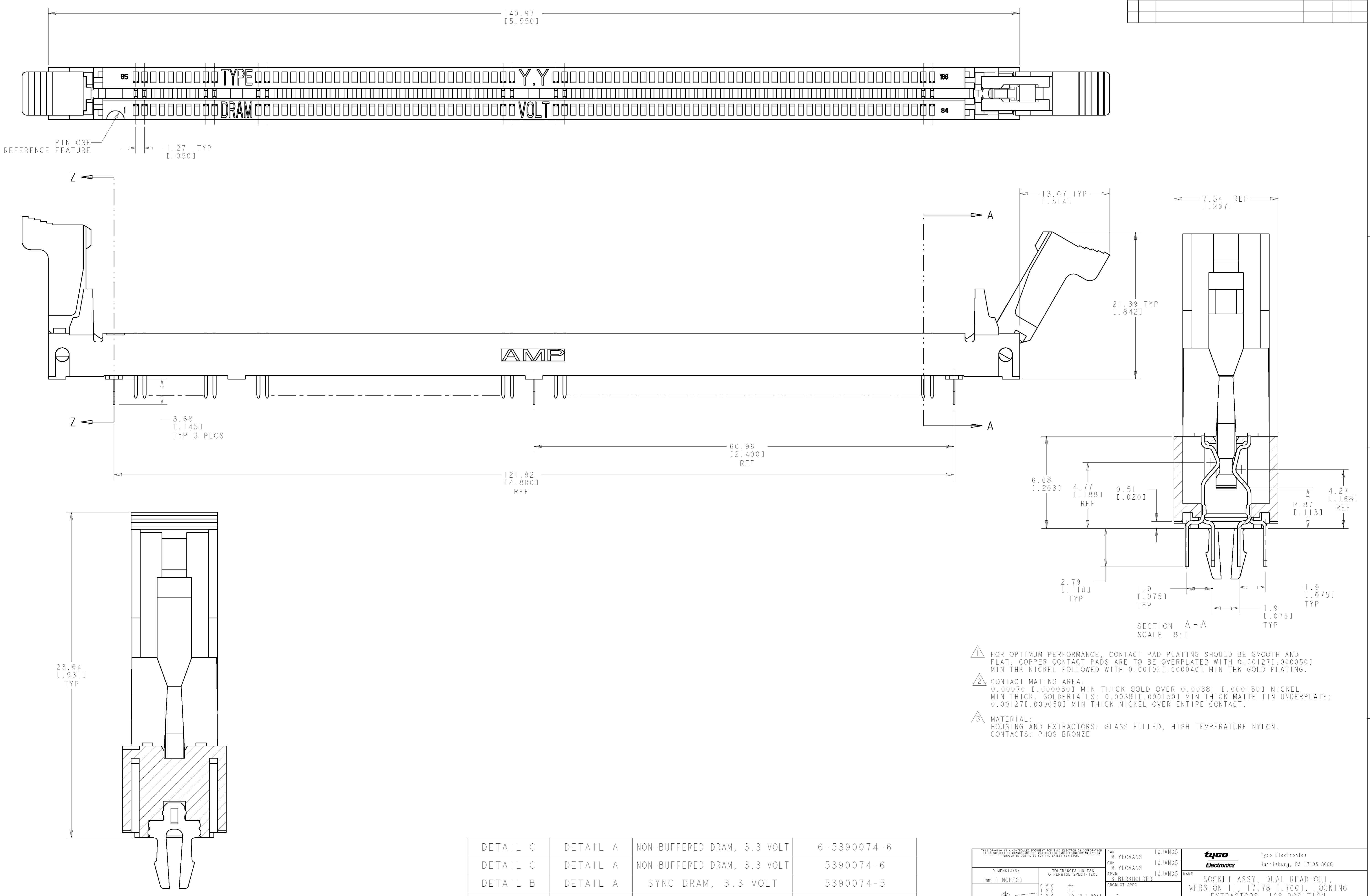
Tel: +86-755-8981 8866 Fax: +86-755-8427 6832

Email & Skype: info@chipsmall.com Web: www.chipsmall.com

Address: A1208, Overseas Decoration Building, #122 Zhenhua RD., Futian, Shenzhen, China



LOC	DIST	REVISIONS					
GP	0	P	LTR	DESCRIPTION	DATE	DWN	APVD
		A		RELEASED PER EC 0512-0488-04	10JAN05	MY	SB

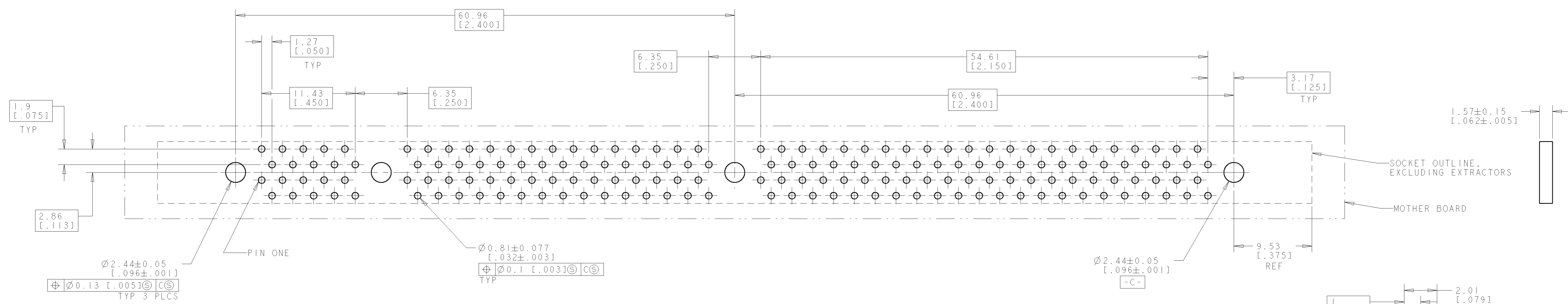


- 1. FOR OPTIMUM PERFORMANCE, CONTACT PAD PLATING SHOULD BE SMOOTH AND FLAT. COPPER CONTACT PADS ARE TO BE OVERPLATED WITH 0.00127 [0.00050] MIN THK NICKEL FOLLOWED WITH 0.00102 [0.00040] MIN THK GOLD PLATING.
- 2. CONTACT MATING AREA: 0.00076 [0.00030] MIN THICK GOLD OVER 0.00381 [0.00150] NICKEL MIN THICK. SOLDER TAILS: 0.00381 [0.00150] MIN THICK MATTE TIN UNDERPLATE: 0.00127 [0.00050] MIN THICK NICKEL OVER ENTIRE CONTACT.
- 3. MATERIAL: HOUSING AND EXTRACTORS: GLASS FILLED, HIGH TEMPERATURE NYLON. CONTACTS: PHOS BRONZE

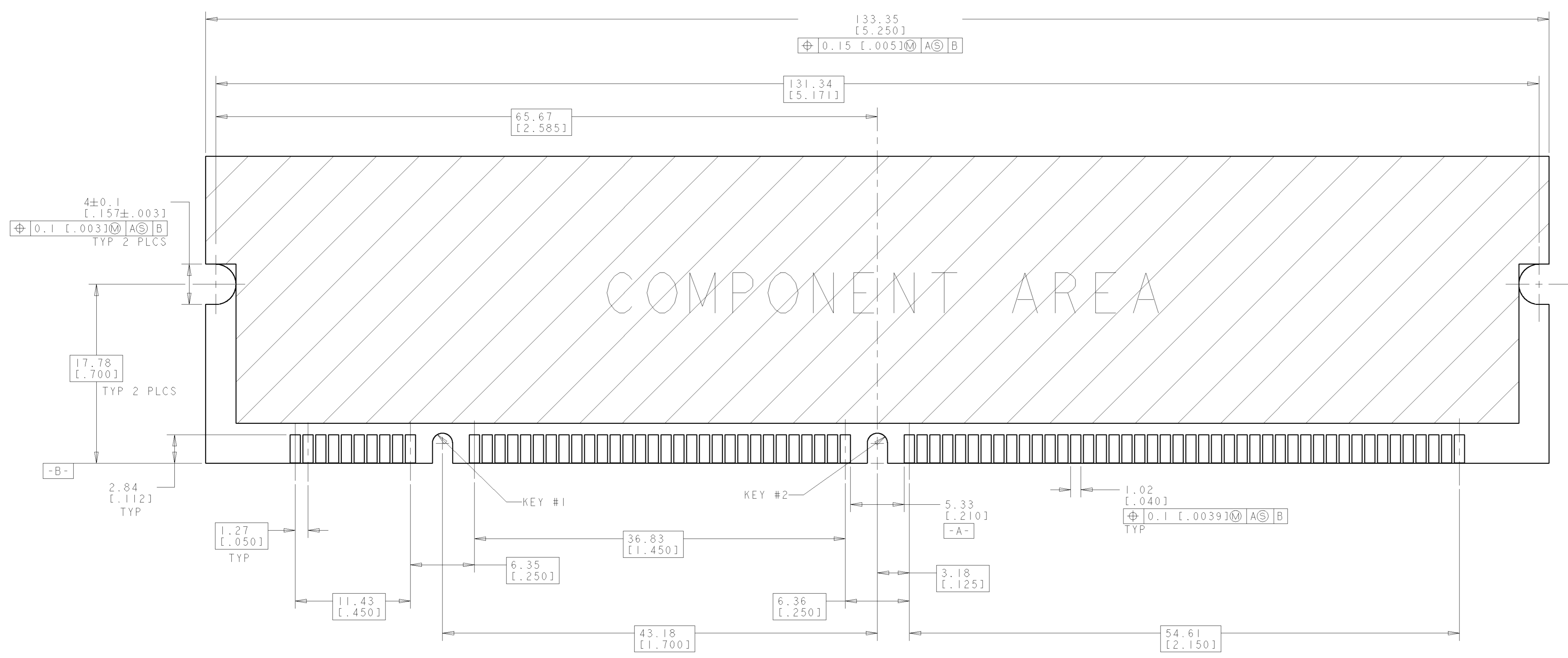
KEY #1	KEY #2	PART DESCRIPTION	PART NUMBER
DETAIL C	DETAIL A	NON-BUFFERED DRAM, 3.3 VOLT	6-5390074-6
DETAIL C	DETAIL A	NON-BUFFERED DRAM, 3.3 VOLT	5390074-6
DETAIL B	DETAIL A	SYNC DRAM, 3.3 VOLT	5390074-5
DETAIL A	DETAIL B	STD DRAM, 5 VOLT	5390074-1

DIMENSIONS: mm [INCHES]		TOLERANCES UNLESS OTHERWISE SPECIFIED: 9 PLC ± 2 PLC ±0.13 [0.005] 3 PLC ± 4 PLC ± ANGLES ±1°		DWN M. YEOMANS 10JAN05 CKD M. YEOMANS 10JAN05 APVD S. BURKHOLDER 10JAN05		<b>tyco</b> Tyco Electronics Harrisburg, PA 17105-3608	
MATERIAL:		FINISH:		WEIGHT:		NAME: SOCKET ASSY, DUAL READ-OUT, VERSION II, 17.78 [0.700], LOCKING EXTRACTORS, 168 POSITION	
CUSTOMER DRAWING		SCALE: 4:1		SIZE: A1 CAGE CODE: 00779 DRAWING NO: 5390074		RESTRICTED TO:	

LOC	DIST	REV	DESCRIPTION	DATE	DWN	APVD
GP	0		SEE SHEET 1			

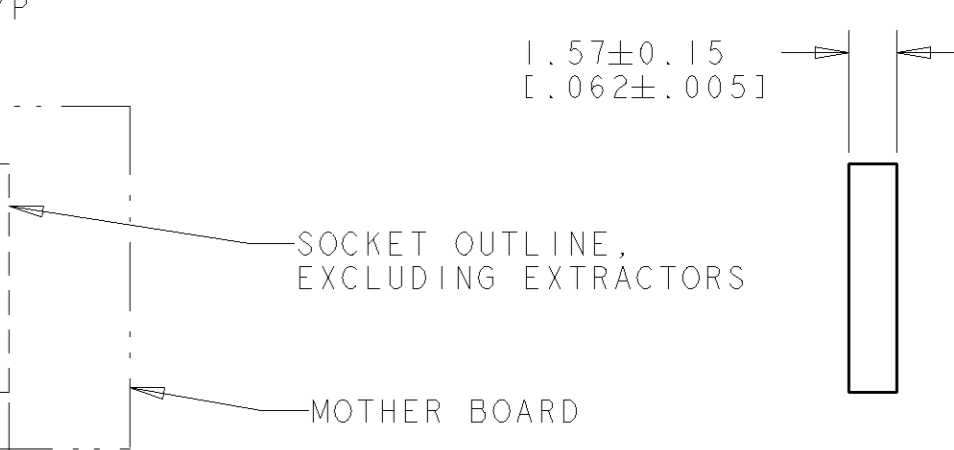


RECOMMENDED CIRCUIT BOARD HOLE LAYOUT

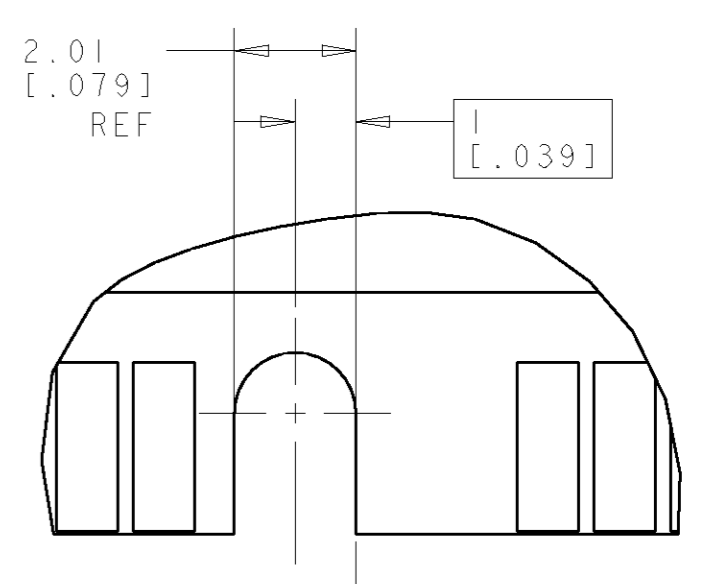


RECOMMENDED MODULE LAYOUT

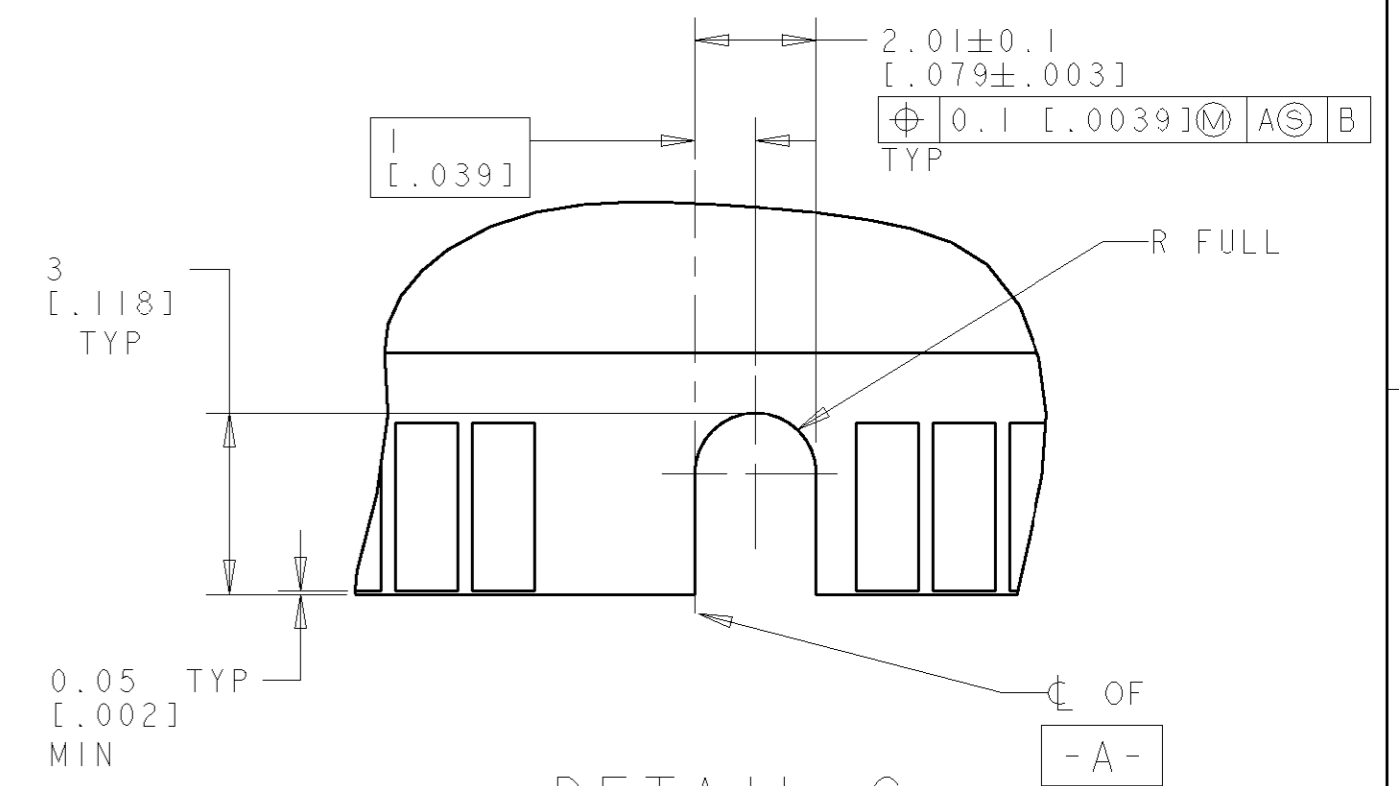
SEE JEDEC SPEC. MO-161 FOR COMPLETE MODULE DETAILS  
 1.27±0.10 [0.050±.004] THICK ACROSS CONTACT PADS



DETAIL A  
SCALE 8:1



DETAIL B  
SCALE 8:1



DETAIL C  
SCALE 8:1

DIMENSIONS: mm [INCHES]		TOLERANCES UNLESS OTHERWISE SPECIFIED: 0 PLC ± 1 PLC ± 2 PLC ±0.13 [0.005] 3 PLC ± 4 PLC ± ANGLES ±1°		DWN M. YEOMANS 10JAN05 CHK M. YEOMANS 10JAN05 APVD S. BURKHOLDER 10JAN05		<b>tyco</b> Tyco Electronics Harrisburg, PA 17105-3608	
MATERIAL: - FINISH: -		WEIGHT: - CUSTOMER DRAWING		NAME: SOCKET ASSY, DUAL READ-OUT, VERSION II, 17.78 [0.700], LOCKING EXTRACTORS, 168 POSITION APPLICATION SPEC: - SIZE: A1 CAGE CODE: 00779 DRAWING NO: C-5390074		RESTRICTED TO: - SCALE: 4:1 SHEET: 2 OF 2 REV: A	