



Chipsmall Limited consists of a professional team with an average of over 10 year of expertise in the distribution of electronic components. Based in Hongkong, we have already established firm and mutual-benefit business relationships with customers from,Europe,America and south Asia,supplying obsolete and hard-to-find components to meet their specific needs.

With the principle of "Quality Parts,Customers Priority,Honest Operation,and Considerate Service",our business mainly focus on the distribution of electronic components. Line cards we deal with include Microchip,ALPS,ROHM,Xilinx,Pulse,ON,Everlight and Freescale. Main products comprise IC,Modules,Potentiometer,IC Socket,Relay,Connector.Our parts cover such applications as commercial,industrial, and automotives areas.

We are looking forward to setting up business relationship with you and hope to provide you with the best service and solution. Let us make a better world for our industry!



Contact us

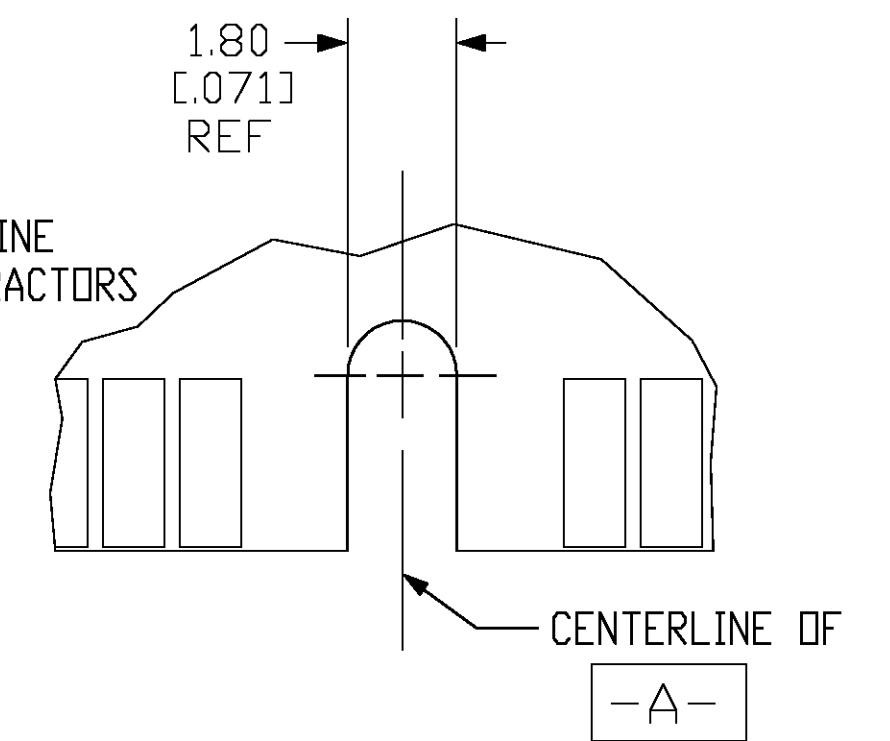
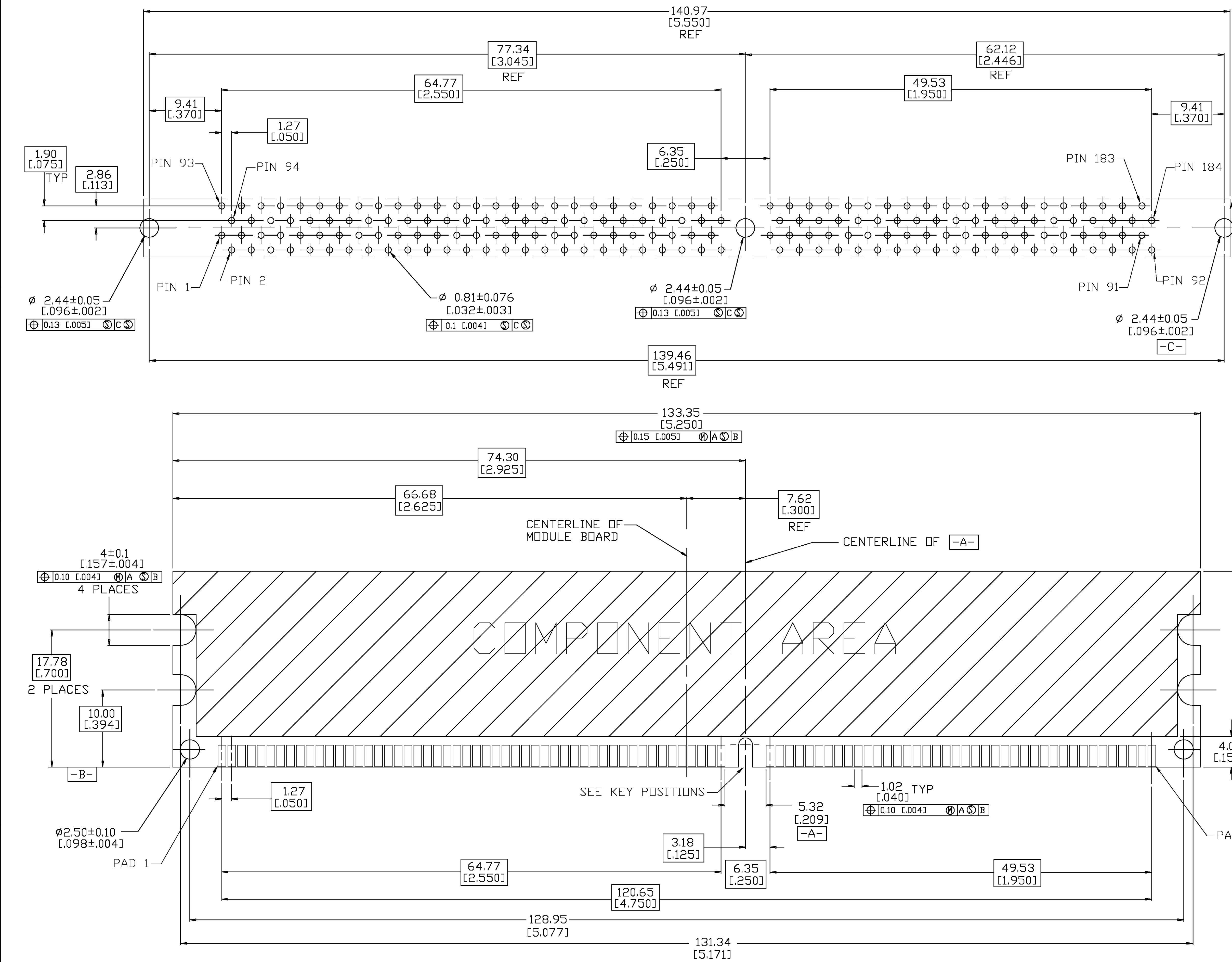
Tel: +86-755-8981 8866 Fax: +86-755-8427 6832

Email & Skype: info@chipsmall.com Web: www.chipsmall.com

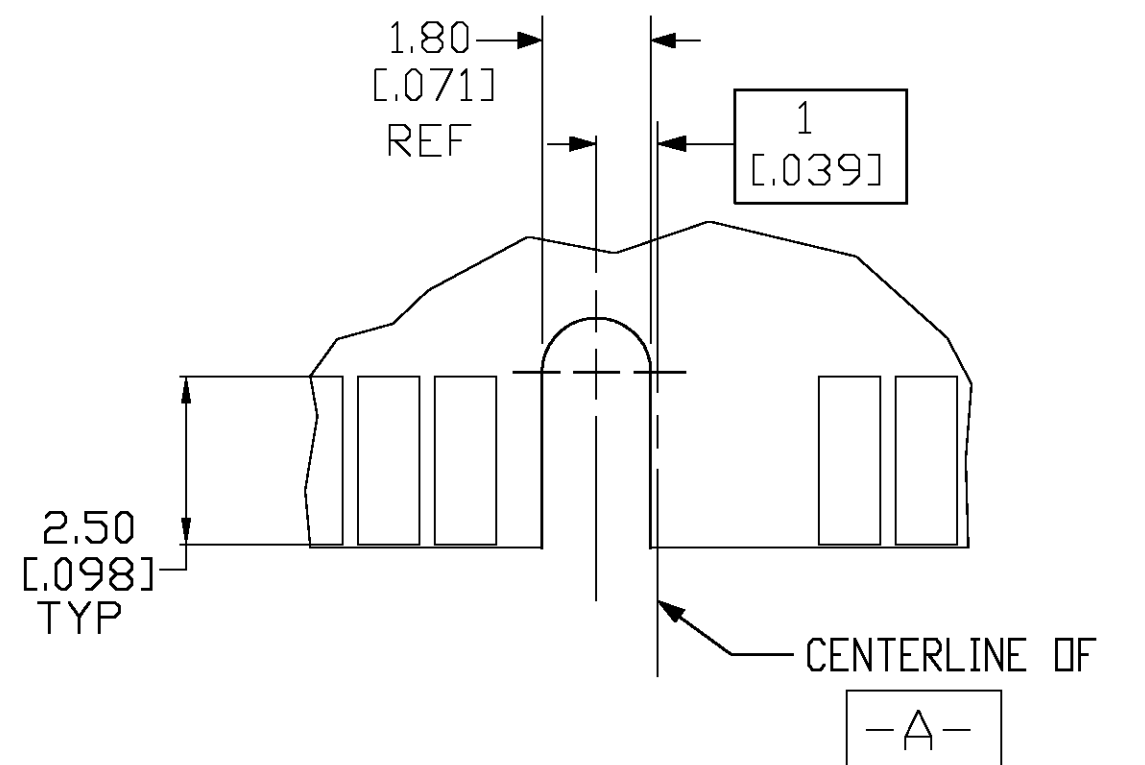
Address: A1208, Overseas Decoration Building, #122 Zhenhua RD., Futian, Shenzhen, China



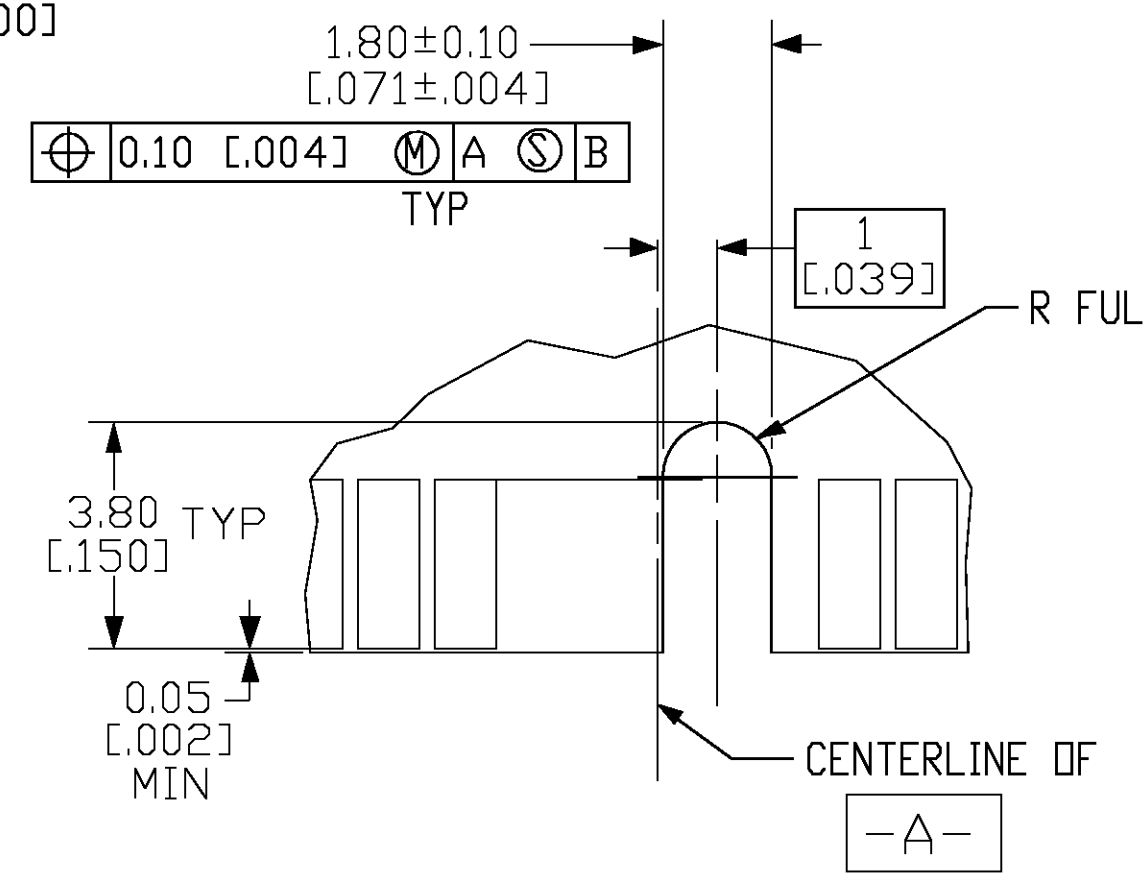
LOC		DIST		REVISIONS				
GP	0	P	LTR	DESCRIPTION	DATE	OWN	APVD	
				SEE SHEET 1				



DETAIL A
SCALE 8:1



DETAIL B
SCALE 8:1



DETAIL C
SCALE 8:1

KEY POSITIONS

RECOMMENDED MODULE LAYOUT
 SEE JEDEC SPEC MO-206 FOR COMPLETE MODULE DETAILS
 1.27±0.10 [0.050±.004] THICK ACROSS CONTACT PADS

THIS DRAWING IS A CONTROLLED DOCUMENT.		DWG: S. WAITMAN	9DEC04		Tyco Electronics Corporation Harrisburg, Pa 17105-3608	
DIMENSIONS: mm [INCHES]		CHK: M. YEOMANS	9DEC04		NAME: SOCKET ASSEMBLY, DIMM2P	
TOLERANCES UNLESS OTHERWISE SPECIFIED:		APVD: M. YEOMANS		PRODUCT SPEC: 108-175.3		
0 PLG ± -	1 PLG ± -	PRODUCT SPEC: 108-175.3		APPLICATION SPEC: 114-1115		
2 PLG ± ± 0.13 [0.005]	3 PLG ± ± -	SIZE: A1		CAGE CODE: 00779		DRAWING NO: 5390432
4 PLG ± ± -	ANGLES ± ± -	WEIGHT: -		RESTRICTED TO: -		CUSTOMER DRAWING
MATERIAL: 1	FINISH: 2	SCALE: 1:1		SHEET: 2 OF 2		REV: A