



Chipsmall Limited consists of a professional team with an average of over 10 year of expertise in the distribution of electronic components. Based in Hongkong, we have already established firm and mutual-benefit business relationships with customers from,Europe,America and south Asia,supplying obsolete and hard-to-find components to meet their specific needs.

With the principle of “Quality Parts,Customers Priority,Honest Operation,and Considerate Service”,our business mainly focus on the distribution of electronic components. Line cards we deal with include Microchip,ALPS,ROHM,Xilinx,Pulse,ON,Everlight and Freescale. Main products comprise IC,Modules,Potentiometer,IC Socket,Relay,Connector.Our parts cover such applications as commercial,industrial, and automotives areas.

We are looking forward to setting up business relationship with you and hope to provide you with the best service and solution. Let us make a better world for our industry!



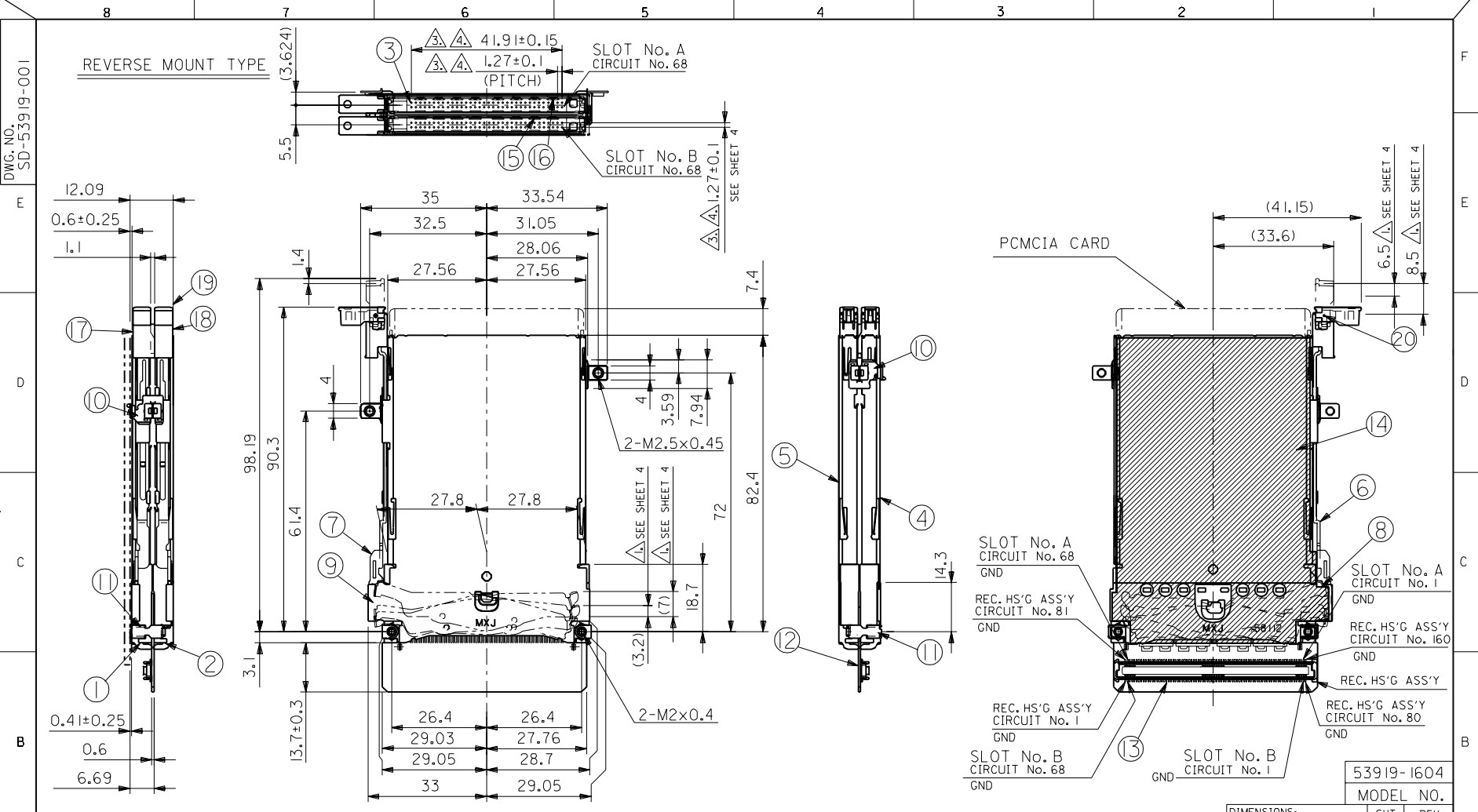
Contact us

Tel: +86-755-8981 8866 Fax: +86-755-8427 6832

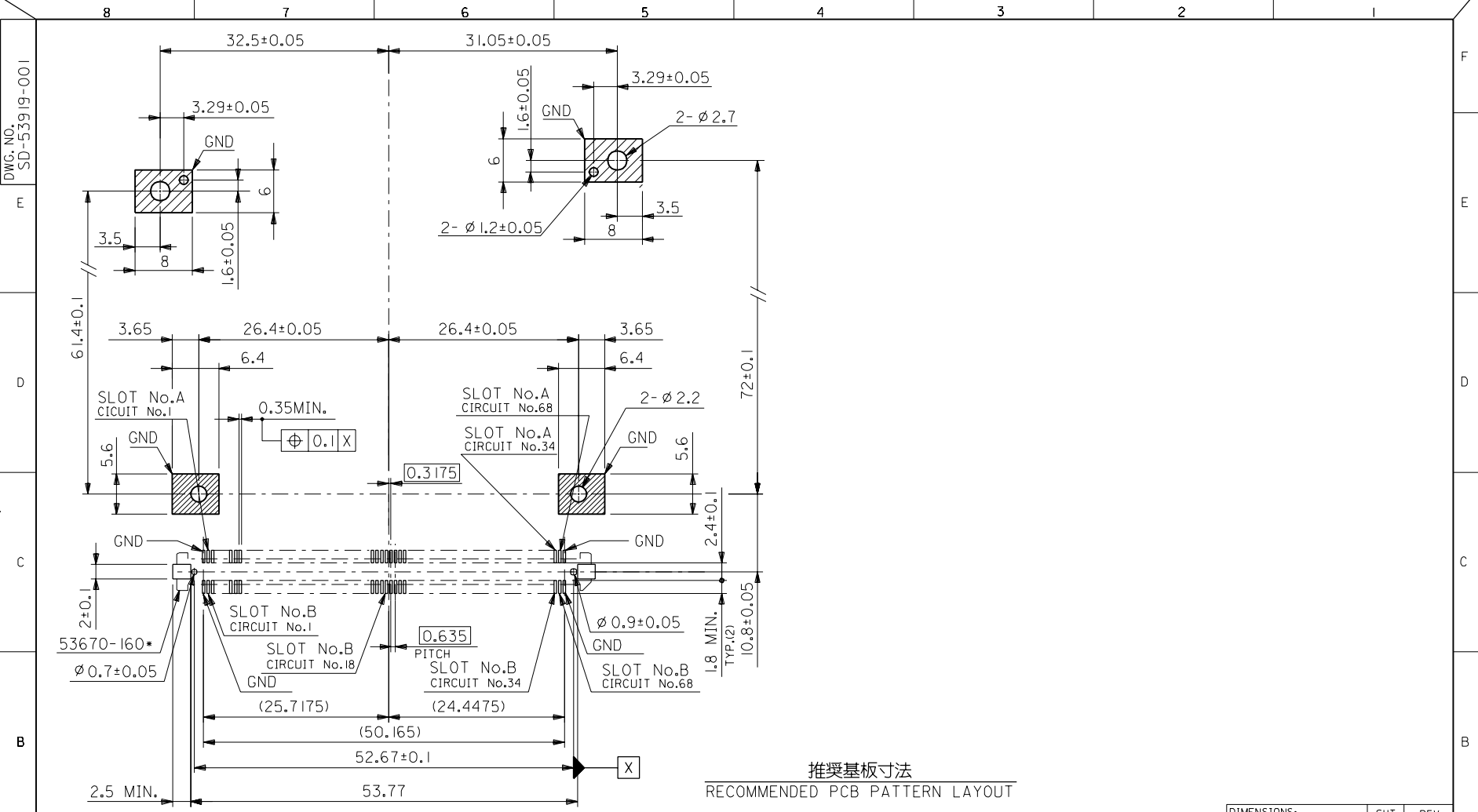
Email & Skype: info@chipsmall.com Web: www.chipsmall.com

Address: A1208, Overseas Decoration Building, #122 Zhenhua RD., Futian, Shenzhen, China





DO NOT SCALE DRAWING	EC NO. DRWN: CHK: APPR:	EC NO. DRWN: CHK: APPR:	EC NO. DRWN: CHK: APPR:	EC NO. DRWN: CHK: APPR:	EC NO. JD2000-0281 DRWN: HHIRATA '99/09/24 CHK: MSASAO '99/09/24 APPR: HIKESUGI '99/09/24	MATERIAL 材料 SHEET 4 参照 SEE SHEET 4	GENERAL TOLERANCES: (UNLESS SPECIFIED) 一般公差	SCALE 1 - 1 <input checked="" type="checkbox"/> mm <input type="checkbox"/> INCH	DESIGN UNITS <input checked="" type="checkbox"/> mm <input type="checkbox"/> INCH	THIRD ANGLE PROJECTION <input type="checkbox"/> mm <input type="checkbox"/> INCH <input checked="" type="checkbox"/> mm ONLY	DIMENSIONS: SHT REV	REVISE ON CAD ONLY
					RELEASED	FINISH 仕上り SHEET 4 参照 SEE SHEET 4	10 OVER 以上	+0.25	CHECKED BY & DATE H. Sarano '99/09/25			
					REV	WIRE RANGE 通所線径 — #	30 OVER 以上	+0.3	APPROVED BY & DATE H. Sarano '99/09/25			
						INS. RANGE 被覆外径 — #	ANGLE 角度	+3°	CAD FILE NAME SD-53919-001.S01	MATERIAL NO. 53919-1604	DRAWING NO. SD-53919-001	SHEET NO. 1 OF 4
							THIS DRAWING CONTAINS INFORMATION THAT IS PROPRIETARY TO MOLEX INCORPORATED AND SHOULD NOT BE USED WITHOUT WRITTEN PERMISSION.					SIZE B



推奨基板寸法
RECOMMENDED PCB PATTERN LAYOUT

DO NOT SCALE DRAWING

EC NO. DRWN: CHK: APPR:	EC NO. DRWN: CHK: APPR:	EC NO. DRWN: CHK: APPR:	EC NO. DRWN: CHK: APPR:	SEE SHEET 1 OF 4	O	REV	MATERIAL 材料	GENERAL TOLERANCES: (UNLESS SPECIFIED) 一般公差	SCALE NONE	DESIGN UNITS <input checked="" type="checkbox"/> mm <input type="checkbox"/> INCH	DIMENSIONS: <input type="checkbox"/> mm <input type="checkbox"/> INCH <input checked="" type="checkbox"/> mm ONLY	SHT	REV
							DESCRIPTION 仕上り						
							SHEET 4 参照 SEE SHEET 4	10 OVER 以上	30 UNDER 未満	+0.25	CHECKED BY & DATE H. Sarai '99/09/25		
							FINISH 仕上げ	30 OVER 以上	+0.3	APPROVED BY & DATE H. Sarai '99/09/25	MOLEX INCORPORATED		
							WIRE RANGE 通所線径	ANGLE 角度	+3°	CAD FILE NAME SD-53919-001.S02		MATERIAL NO. 53919-1604	DRAWING NO. SD-53919-001
							INS. RANGE 被覆外径						SIZE B

THIS DRAWING CONTAINS INFORMATION THAT IS PROPRIETARY TO MOLEX INCORPORATED AND SHOULD NOT BE USED WITHOUT WRITTEN PERMISSION.

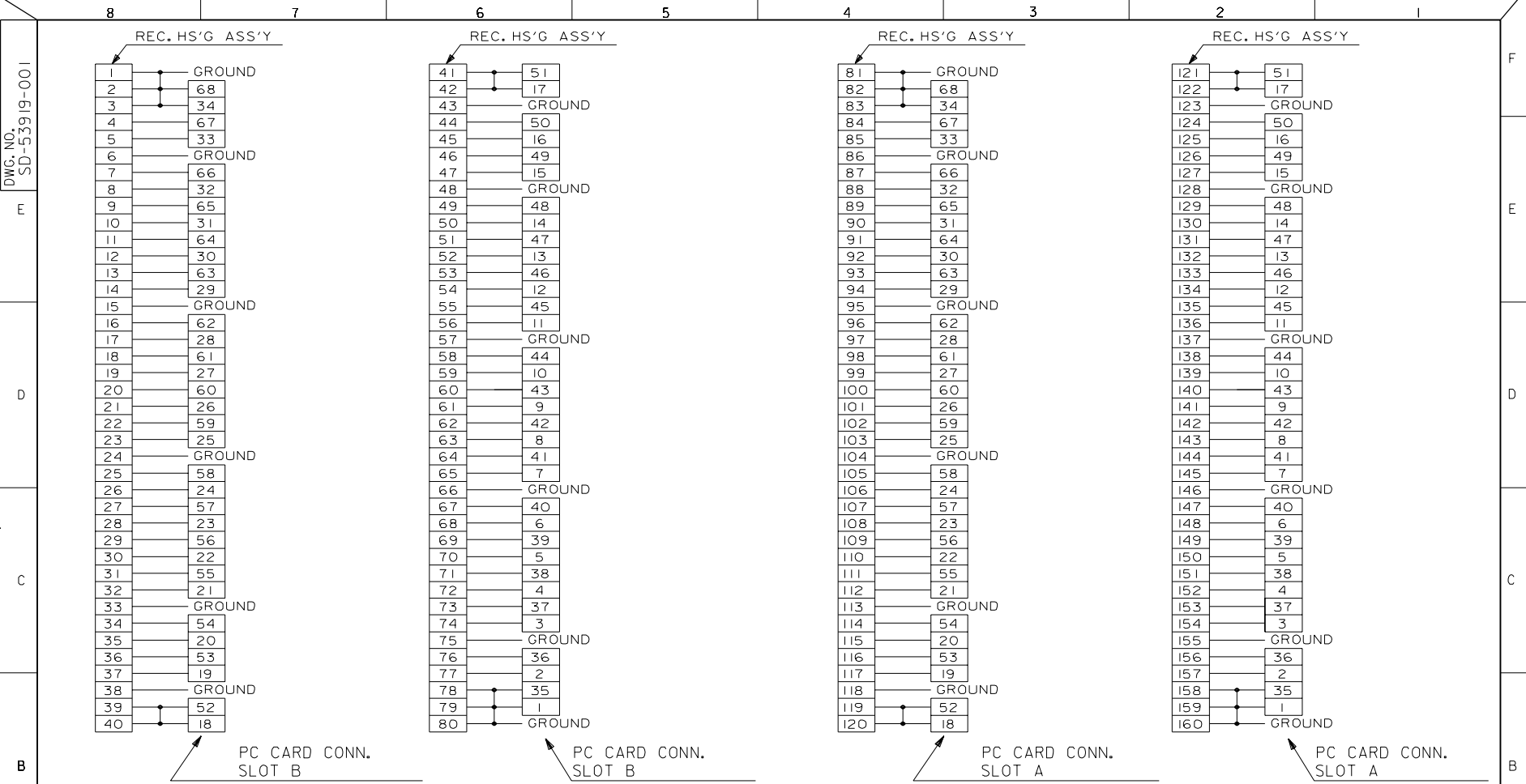


DIAGRAM A:
CIRCUIT ASSIGNMENT DWG.

DO NOT SCALE DRAWING	←	EC NO. DRWN: CHK: APPR:	EC NO. DRWN: CHK: APPR:	EC NO. DRWN: CHK: APPR:	EC NO. DRWN: CHK: APPR:	SEE SHEET 1 OF 4 EC NO. DRWN: CHK: APPR:	DESCRIPTION REV	MATERIAL 材料 SHEET 4 参照 SEE SHEET 4	GENERAL TOLERANCES: (UNLESS SPECIFIED) 一般公差	SCALE NONE	DESIGN UNITS <input checked="" type="checkbox"/> mm <input type="checkbox"/> INCH	<input checked="" type="checkbox"/> THIRD ANGLE <input type="checkbox"/> PROJECTION	DIMENSIONS: <input type="checkbox"/> mm <input type="checkbox"/> INCH <input checked="" type="checkbox"/> mm ONLY	SHT	REV	
		FINISH 仕上り SHEET 4 参照 SEE SHEET 4	WIRE RANGE 適用線径範囲	INS. RANGE 被覆外径	10 UNDER 未満	10 OVER 以上	30 UNDER 未満	30 OVER 以上	ANGLE 角度	DRAWN BY & DATE H. Ninota '99/09/25	CHECKED BY & DATE H. Sarai '99/09/25	APPROVED BY & DATE H. Sarai '99/09/25	CAD FILE NAME SD-53919-001.S03	MATERIAL NO. 53919-1604	DRAWING NO. SD-53919-001	SHEET NO. 3
		TITLE: PC CARD CONN. EJECT MECHANISM METAL SHELL TYPE FOR CARD BUS												MOLEX INCORPORATED		
		THIS DRAWING CONTAINS INFORMATION THAT IS PROPRIETARY TO MOLEX INCORPORATED AND SHOULD NOT BE USED WITHOUT WRITTEN PERMISSION.												SIZE B		

DWG. NO. SD-53919-001

DO NOT SCALE DRAWING

注) NOTES

△ ボタンストロークが 6.5mmの時、カード飛び出し量は (3.2mm)。
 ボタンストロークが 8.5mmの時、カード飛び出し量は (7mm)。
 WHEN BUTTON PUSH STROKE IS 6.5mm, CARD OUT BY (3.2mm).
 WHEN BUTTON PUSH STROKE IS 8.5mm, CARD OUT BY (7mm).

△ 接点部 金めっき
 CONTACT AREA GOLD PLATING
 パラジウムニッケルめっき
 PALLADIUM-NICKEL PLATING

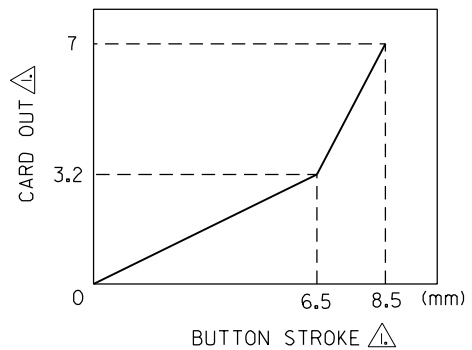
半田付け部 半田めっき
 SOLDER TAIL AREA TIN-LEAD PLATING
 下地めっき ニッケルめっき
 UNDERPLATING NICKEL PLATING

△ ピンの倒れは、ピン根元を基準に全方向へ 0.1 MAX.とする。
 PIN TIP LEAN TOWARD ANY DIRECTION NOT TO EXCEED 0.1
 WHEN MEASURED FROM PIN BASE.

△ ピン根元に適用する。
 THIS DIMENSION TO BE MEASURED AT PIN BASE.

△ 接点部 金めっき
 CONTACT AREA GOLD PLATING
 下地めっき ニッケルめっき
 UNDERPLATING NICKEL PLATING

△ 半田めっき
 TIN-LEAD PLATING
 銅下地めっき
 COPPER UNDERPLATING



No.	品名 NAME	MATERIAL	仕上げ FINISH	個数 PIECE
1	HOUSING (NORMAL)	ガラス入り耐熱樹脂 UL94V-0 色 : 自然色 LIQUID CRYSTAL POLYMER GLASS FILLED UL94V-0 COLOR:NATURAL	—	1
2	HOUSING (REVERSE)	ガラス入り耐熱樹脂 UL94V-0 色 : 自然色 LIQUID CRYSTAL POLYMER GLASS FILLED UL94V-0 COLOR:NATURAL	—	1
3	PIN	りん青銅 PHOSPHOR BRONZE	NOTES △ 参照 SEE NOTES △	136
4	METAL SHELL (FOR LEFT SIDE BUTTON)	ステンレス鋼 t 0.254 STAINLESS STEEL t 0,254	—	1
5	METAL SHELL (FOR RIGHT SIDE BUTTON)	ステンレス鋼 t 0.254 STAINLESS STEEL t 0,254	—	1
6	PUSH ROD (FOR LEFT SIDE BUTTON)	ステンレス鋼 t 0.8 STAINLESS STEEL t 0.8	—	1
7	PUSH ROD (FOR RIGHT SIDE BUTTON)	ステンレス鋼 t 0.8 STAINLESS STEEL t 0.8	—	1
8	LEVER (FOR LEFT SIDE BUTTON)	ステンレス鋼 t 0.4 STAINLESS STEEL t 0,4	—	1
9	LEVER (FOR RIGHT SIDE BUTTON)	ステンレス鋼 t 0.4 STAINLESS STEEL t 0,4	—	1
10	FRONT BRACKET	ステンレス鋼 t 0.5 STAINLESS STEEL t 0,5	—	2
11	REAR BRACKET	冷間圧延鋼板 (SPCC) t 0.5 COLD ROLLED CARBON STEEL SHEETS t 0,5	NOTES △ 参照 SEE NOTES △	2
12	PCB	ガラス布基材エポキシ樹脂 t 0.6 GLASS FABRIC BASE, EPOXY RESIN t 0,6	—	1
13	0.635 PITCH B-TO-B S/T REC. HS'G ASS'Y	SD-52922-***0 参照 SEE SD-52922-***0	—	1
14	INSULATION SHEET	ポリエステル t 50 μm POLYESTER t 50 MICRO METER	—	1
15	CARD BUS TERMINAL	りん青銅 PHOSPHOR BRONZE	NOTES △ 参照 SEE NOTES △	4
16	CARD BUS TERMINAL	りん青銅 PHOSPHOR BRONZE	NOTES △ 参照 SEE NOTES △	4
17	BASE BUTTON (WITH RIB)	ポリカーボネイト UL94V-0 色 : 黒色 POLYCARBONATE UL94V-0 COLOR:BLACK	—	1
18	BASE BUTTON	ポリカーボネイト UL94V-0 色 : 黒色 POLYCARBONATE UL94V-0 COLOR:BLACK	—	1
19	TOP BUTTON	ガラス入りポリエステル UL94V-0 色 : 黒色 POLYESTER GLASS FILLED UL94V-0 COLOR:BLACK	—	2
20	PIN	黄銅 BRASS	—	2

EC NO. DRWN: CHK: APPR:	EC NO. DRWN: CHK: APPR:	EC NO. DRWN: CHK: APPR:	EC NO. DRWN: CHK: APPR:	SEE SHEET 1 OF 4 EC NO. DRWN: CHK: APPR:	DESCRIPTION REV	MATERIAL 材料 表参照 SEE TABLE	GENERAL TOLERANCES: (UNLESS SPECIFIED) 一般公差	SCALE NONE	DESIGN UNITS <input checked="" type="checkbox"/> mm <input type="checkbox"/> INCH	THIRD ANGLE PROJECTION	DIMENSIONS: <input type="checkbox"/> mm <input type="checkbox"/> INCH <input checked="" type="checkbox"/> mm ONLY	SHT REV
						FINISH 仕上げ 表参照 SEE TABLE	10 UNDER 未満	+0.2	DRAWN BY & DATE H. Ninata '99/09/25	TITLE: PC CARD CONN. EJECT MECHANISM METAL SHELL TYPE FOR CARD BUS		
						30 UNDER 未満	+0.25	CHECKED BY & DATE H. Sarao '99/09/25				
						30 OVER 以上	+0.3	APPROVED BY & DATE H. Sarao '99/09/25				
						WIRE RANGE 適用線径	—		CAD FILE NAME SD-53919-001.S04	MATERIAL NO. 53919-1604	DRAWING NO. SD-53919-001	SHEET NO. 4
						INS. RANGE 被覆外径	—		THIS DRAWING CONTAINS INFORMATION THAT IS PROPRIETARY TO MOLEX INCORPORATED AND SHOULD NOT BE USED WITHOUT WRITTEN PERMISSION.			SIZE B