



Chipsmall Limited consists of a professional team with an average of over 10 year of expertise in the distribution of electronic components. Based in Hongkong, we have already established firm and mutual-benefit business relationships with customers from,Europe,America and south Asia,supplying obsolete and hard-to-find components to meet their specific needs.

With the principle of “Quality Parts,Customers Priority,Honest Operation,and Considerate Service”,our business mainly focus on the distribution of electronic components. Line cards we deal with include Microchip,ALPS,ROHM,Xilinx,Pulse,ON,Everlight and Freescale. Main products comprise IC,Modules,Potentiometer,IC Socket,Relay,Connector.Our parts cover such applications as commercial,industrial, and automotives areas.

We are looking forward to setting up business relationship with you and hope to provide you with the best service and solution. Let us make a better world for our industry!



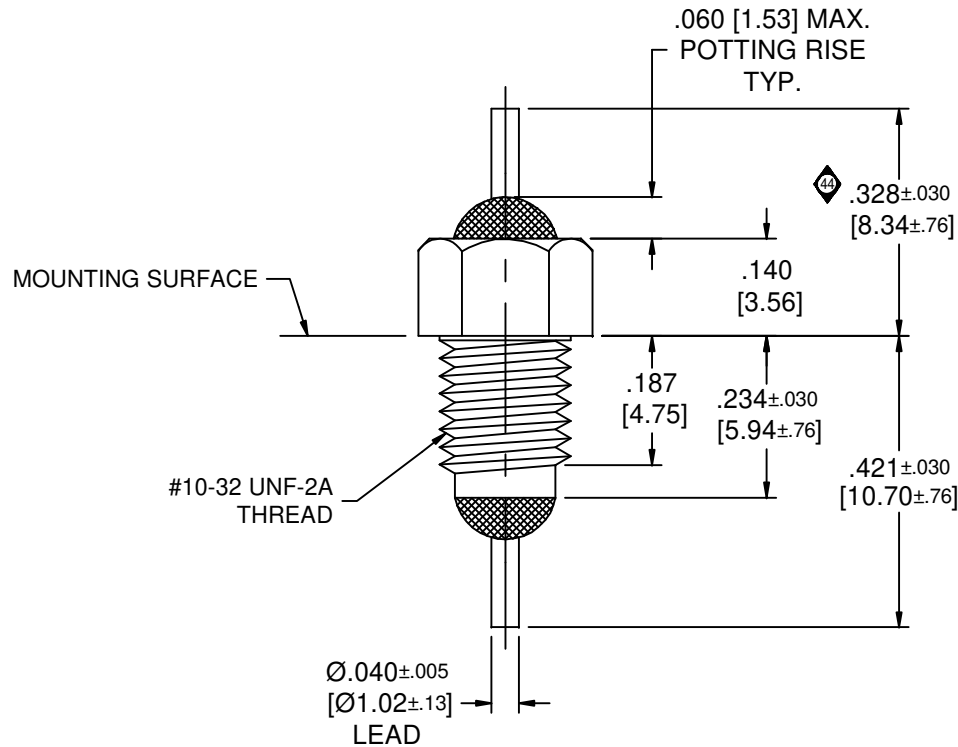
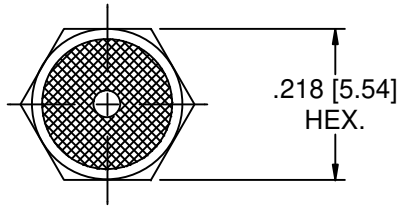
Contact us

Tel: +86-755-8981 8866 Fax: +86-755-8427 6832

Email & Skype: info@chipsmall.com Web: www.chipsmall.com

Address: A1208, Overseas Decoration Building, #122 Zhenhua RD., Futian, Shenzhen, China





NOTES:

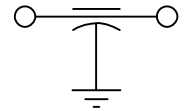
- 1. SUGGESTED MOUNTING HOLE: Ø.218 [Ø5.54]
- 2. HARDWARE IS INCLUDED.

LEAD FINISH	SOLDER
BUSHING FINISH	SILVER
CAPACITANCE	.3uF +100/-0%
TEMP. RANGE	-55°C TO +125°C
CURRENT	10 AMPS MAX.
WORKING VOLTAGE	85°C 80 VDC MAX. 125°C 50 VDC MAX.
DC RESISTANCE	.01 Ohms MAX.

I.L. PER MIL-STD-220 @ 25°C (NO LOAD)


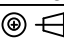
FREQ.	I.L. (dB)
50 KHz	8
100 KHz	13
1 MHz	32
10 MHz	47
100 MHz	60
500 MHz	70
1 GHz	70

SCHEMATIC



MARKING:

PART: SCI 304P
BAG: 54-786-013
DATE CODE
QTY / BAG (200 MAX.)

CN 46964-ENG 44 CN 184932 43 CHANGE NOTICE	UNLESS OTHERWISE SPECIFIED	TOLERANCES UNLESS OTHERWISE SPECIFIED	 SPECTRUM CONTROL INC.	FAIRVIEW PENNSYLVANIA	
	DIMENSIONS ARE IN INCHES [MILLIMETERS]	Dec. .x ±			Dwn. Hassett Description Date 10-30-98
	DO NOT SCALE	Dec. .xx ±			Engr. J.Kraus Sheet 1 of 1
	THIRD ANGLE PROJECTION	Dec. .xxx ± .015 [.38]			CODE IDENT. NO. 0LSP2
			Angles ± 0° 30"	FEED THRU RESIN SEAL FILTER	
				54-786-013	