



Chipsmall Limited consists of a professional team with an average of over 10 year of expertise in the distribution of electronic components. Based in Hongkong, we have already established firm and mutual-benefit business relationships with customers from,Europe,America and south Asia,supplying obsolete and hard-to-find components to meet their specific needs.

With the principle of “Quality Parts,Customers Priority,Honest Operation,and Considerate Service”,our business mainly focus on the distribution of electronic components. Line cards we deal with include Microchip,ALPS,ROHM,Xilinx,Pulse,ON,Everlight and Freescale. Main products comprise IC,Modules,Potentiometer,IC Socket,Relay,Connector.Our parts cover such applications as commercial,industrial, and automotives areas.

We are looking forward to setting up business relationship with you and hope to provide you with the best service and solution. Let us make a better world for our industry!



Contact us

Tel: +86-755-8981 8866 Fax: +86-755-8427 6832

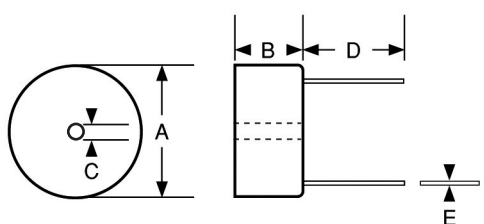
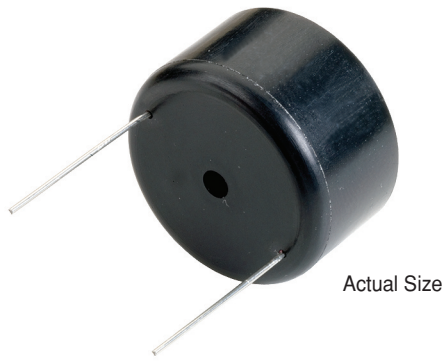
Email & Skype: info@chipsmall.com Web: www.chipsmall.com

Address: A1208, Overseas Decoration Building, #122 Zhenhua RD., Futian, Shenzhen, China



High L Filter Inductors

INDUCTANCE (mH) ±10%
TEST FREQUENCY (kHz)
SRF MINIMUM (kHz)
DC RESISTANCE MAXIMUM (OHMS)
CURRENT INCREMENTAL 5% (mA)
CURRENT INCREMENTAL 10% (mA)



SERIES 5400 POWDER CORE						
-106K	10	1.0	269	1.53	131	204
-126K	12	1.0	235	1.67	120	186
-156K	15	1.0	200	1.88	107	167
-186K	18	1.0	175	2.55	98	152
-226K	22	1.0	150	2.83	88	138
-276K	27	1.0	127	3.15	80	124
-336K	33	1.0	107	3.50	72	113
-396K	39	1.0	92	4.80	66	104
-476K	47	1.0	76	5.31	60	94
-566K	56	1.0	62	5.83	55	86
-686K	68	1.0	48	6.47	50	78
-826K	82	1.0	35	8.89	46	71
-107K	100	1.0	21	9.89	41	65

Optional Tolerances: J = 5% H = 3% G = 2%

*Complete part # must include series # PLUS the dash #

For surface finish information, refer to www.delevanfinishes.com

Physical Parameters

	Inches	Millimeters
A	1.30 ± 0.010	33.020 ± 0.254
B	0.73 ± 0.010	18.542 ± 0.254
C	0.150 ± 0.005	3.810 ± 0.127
D	1.00 Min.	25.4 Min.
E	0.032 Typ.	0.813 Typ.

Marking DELEVAN; 5400 followed by the dash number and tolerance letter; date code (YYWWL). Note an R after 5400 indicates a RoHS component.

Example: 5400R-396G

DELEVAN
5400R-396G
0913A

Operating Temperature Range -55°C to +125°C

Inductance Measured at 1kHz, 100mV with no DC Current

Incremental Current The current at which the inductance will be decreased by a maximum of 5% or 10% from its initial 0 DC value

Packaging Bulk Only

Contact the Factory for additional sizes and electrical configurations.