



Chipsmall Limited consists of a professional team with an average of over 10 year of expertise in the distribution of electronic components. Based in Hongkong, we have already established firm and mutual-benefit business relationships with customers from,Europe,America and south Asia,supplying obsolete and hard-to-find components to meet their specific needs.

With the principle of “Quality Parts,Customers Priority,Honest Operation,and Considerate Service”,our business mainly focus on the distribution of electronic components. Line cards we deal with include Microchip,ALPS,ROHM,Xilinx,Pulse,ON,Everlight and Freescale. Main products comprise IC,Modules,Potentiometer,IC Socket,Relay,Connector.Our parts cover such applications as commercial,industrial, and automotives areas.

We are looking forward to setting up business relationship with you and hope to provide you with the best service and solution. Let us make a better world for our industry!



Contact us

Tel: +86-755-8981 8866 Fax: +86-755-8427 6832

Email & Skype: info@chipsmall.com Web: www.chipsmall.com

Address: A1208, Overseas Decoration Building, #122 Zhenhua RD., Futian, Shenzhen, China



Tool Pouches, Carriers, Belts and Suspenders

Just as Klein offers a variety of tools designed for specific needs, Klein offers a variety of tool pouches, carriers, belts, and suspenders that suit virtually every preference and need.



For Professionals...
Since 1857™

Tool Pouches

11-Pocket Tool Pouch

- Black leather construction
- Multi-pocketed pouch made for electricians and other professionals
- Stitched and riveted to assure long life
- Stainless steel clip holder accepts most tape clips up to 1-1/4" (32 mm) wide
- Heavy-duty chain tape thong securely fastened with a rivet

Cat. No.	Pockets	Specialty Add-Ons	Belt Connection	Belt Width	Dimensions	Weight
5167	11	Knife Snap, Chain Tape Thong, Metal Tape Measure Holder	Slotted	2-3/4" (69.9 mm)	10" x 10-1/2" (254.0 mm x 266.7 mm)	1.4 lbs. (0.64 kg)



5167

10-Pocket Tool Pouch

- Black leather construction
- Stitched and riveted to assure long life
- Ten separate compartments with places for a wide variety of pliers, screwdrivers, and other tools
- Versatile pouch favored by many telephone installers
- Cat. No. 5190 has slotted-leather tape thong which allows for easy removal of 1" (251.4 mm) I.D. tape rolls

Cat. No.	Pockets	Specialty Add-Ons	Belt Connection	Belt Width	Dimensions	Weight
5165	10	Knife Snap	Slotted	2" (50.8 mm)	10" x 10" (254.0 mm x 254.0 mm)	1.3 lbs. (0.59 kg)
5190	10	Leather Tape Thong	Slotted	1-3/4" (44.5 mm)	6" x 8-3/4" (152.4 x 222.3 mm)	12.0 oz. (340 g)



5165



5190

8-Pocket Tool Pouch

- Black leather construction
- Stitched and riveted to assure long life
- Cat. No. 5178 has heavy-duty chain tape thong securely fastened with a rivet, stainless steel clip holder which accepts most tape clips up to 1-1/4" (31.8 mm) wide, and a roomy pouch for electricians and maintenance workers



5164



5164T



5178

Cat. No.	Pockets	Specialty Add-Ons	Belt Connection	Belt Width	Dimensions	Weight
5164	8	Knife Snap	Slotted	2" (50.8 mm)	6-3/4" x 9-3/4" (171.5 mm x 247.7 mm)	1.2 lbs. (0.54 kg)
5164T	8	Knife Snap	Tunnel	2-1/2" (63.5 mm)	6-3/4" x 9-3/4" (171.5 mm x 247.7 mm)	1.2 lbs. (0.54 kg)
5178	8	Knife Snap, Chain Tape Thong, Metal Tape Measure Holder	Tunnel	2-1/2" (63.5 mm)	11" x 10" (279.4 mm x 254.0 mm)	1.0 lbs. (0.45 kg)



Tool Pouches

8-Pocket Extra-Capacity Tool Pouch

- Black leather construction
- Extra-capacity multi-purpose pouch
- Stitched and riveted to assure long life

Cat. No.	Pockets	Specialty Add-Ons	Belt Connection	Belt Width	Dimensions	Weight
5162T	8	Knife Snap, Leather Tape Thong	Tunnel	3" (76.2 mm)	8-1/2" x 10-3/4" (215.9 mm x 273.1 mm)	1.7 lbs. (0.77 kg)



5162T

7-Pocket Tool Pouch

- Black leather construction
- Riveted to assure long life
- Heavy-duty chain tape thong securely fastened with a rivet

Cat. No.	Pockets	Specialty Add-Ons	Belt Connection	Belt Width	Dimensions	Weight
5166	7	Chain Tape Thong	Tunnel	2-1/4" (57.2 mm)	7" x 9-1/2" (177.8 mm x 241.3 mm)	14.7 oz. (417 g)



5166

6-Pocket Tool Pouches

- Black leather construction
- Riveted to assure long life

Cat. No.	Pockets	Specialty Add-Ons	Belt Connection	Belt Width	Dimensions	Weight
5127	6	Knife Snap	Slotted	2" (50.8 mm)	7" x 10" (177.8 mm x 254.0 mm)	12.6 oz. (358 g)
5127T	6	Knife Snap	Tunnel	2-1/2" (63.5 mm)	7" x 10" (177.8 mm x 254.0 mm)	13.9 oz. (395 g)



5127



5127T

6-Pocket Nail/Screw and Tool Pouch

- Split-leather construction
- Heavy hammer-loops on both sides, allowing for convenient use by right- or left-handed workers
- Riveted and stitched for extra durability

Cat. No.	Pockets	Specialty Add-Ons	Belt Connection	Belt Width	Dimensions	Weight
42241	6	2 Hammer Loops	Tunnel	3" (76.2 mm)	11" x 11-3/4" (279.4 mm x 298.5 mm)	13.8 oz. (390 g)



42241

Tool Pouches

5-Pocket Tool Pouch

- Stitched and riveted to assure long life
- General-purpose pouches
- Cat. No. 5125 is constructed of #4 canvas, leather back, pockets and loops
- Cat. No. 5125L is constructed of leather
- Cat. No. 5126 has black leather construction and knife snap
- Cat. Nos. 5125 and 5125L have heavy-duty chain tape thong securely fastened with a rivet



5126



5125



5125L

Cat. No.	Pockets	Specialty Add-Ons	Belt Connection	Belt Width	Dimensions	Weight
5125	5	Leather Tape Thong	Loops	2-1/4" (57.2 mm)	7-1/2" x 8-1/2" (190.5 mm x 215.9 mm)	10.1 oz. (286 g)
5125L	5	Leather Tape Thong	Loops	2-1/4" (57.2 mm)	7-1/2" x 8-1/2" (190.5 mm x 215.9 mm)	12.0 oz. (340 g)
5126	5	Knife Snap	Slotted	2" (50.8 mm)	6" x 8-3/4" (152.4 x 222.3 mm)	11.8 oz. (36 g)

Lineman's Pouches

- Black leather construction with double leather back for durability
- Rivet hole for belt connection
- Riveted to assure long life
- Includes knife snap, pockets for pliers, most screwdrivers, 6' (1.8 m) folding rule and open-ended wrenches



5118P4



5118P5

Cat. No.	Pockets	Belt Connection	Dimensions	Weight
5118P4	4	Rivet Hole	8" x 11" (203.2 x 279.4 mm)	14.6 oz. (413 g)
5118P5	5	Rivet Hole	10" x 11" (254.0 mm x 279.4 mm)	1.1 lbs. (0.50 kg)

4-Pocket Tool Pouch

- Black leather construction
- Riveted and stitched for extra durability



5119

3-Pocket Utility Pouch

- Black leather construction
- Features 1" (25 mm) reinforced gusset
- Has 2" (51 mm) outside pockets
- Riveted for extra durability



5145

Cat. No.	Pockets	Specialty Add-Ons	Belt Connection	Belt Width	Dimensions	Weight
5119	4	Knife Snap	Slotted	2" (50.8 mm)	6-1/2" x 8-1/2" (165.1 mm x 215.9 mm)	6.2 oz. (176 g)

Cat. No.	Pockets	Belt Connection	Belt Width	Dimensions	Weight
5145	3	Tunnel	1" (25.4 mm)	5-1/4" x 7" (133.4 mm x 177.8 mm)	7.4 oz. (210 g)



Tool Pouches

Single-Pocket Tool Pouch

- Black leather construction
- Perfect for carrying pliers and other tools in the hip pocket
- Prevents wear and tearing of clothes, discomfort, and possible injury
- Riveted to assure long life



5111

Cat. No.	Pockets	Dimensions	Weight
5111	1	4-1/2" x 7" (114.3 mm x 177.8 mm)	3.7 oz. (104 g)

Leather Back Pocket Pouch

- Black leather construction
- Stitched and riveted to assure long life
- Snap loop option for belt
- Six pockets, including scissors pocket on back flap



5481

Cat. No.	Belt Connection	Belt Width	Dimensions	Weight
5481	Snap Loop	Up to 2" (50.8 mm)	10" H x 5-3/4" W x 2-1/2" D (254 x 146.1 x 63.5 mm)	7.5 oz. (213 g)

Back Pocket Pouch

- Four pockets, including two open pockets on the front for longer tools such as screwdrivers
- Cordura® ballistic nylon, a high-performance fabric resistant to abrasions, tears and scuffs
- Riveted and stitched for extra durability
- Snap loop option for belt



5482

Cat. No.	Belt Connection	Belt Width	Dimensions	Weight
5482	Snap Loop	Up to 2" (50.8 mm)	9-7/8" x 5" x 2" (250.8 x 127.0 x 50.8 mm)	4.2 oz. (119 g)

Cordura® is a registered trademark of INVISTA for durable fabrics.

Nut & Bolt Pouch

- Includes interior pocket
- Top sides of pouch reinforced with leather to maintain shape of pouch opening
- Inside bottom is reinforced with leather and ventilating eyelet
- Metal snaps provided on loops for easy attachment to belts up to 3" (76 mm) wide
- Top edge reinforced with 1/4" (6 mm) rope



51A

Cat. No.	Pockets	Color	Dimensions	Weight
51A	One Interior	Black	9" x 10" x 3-1/2" (228.6 x 254.0 x 88.9 mm)	1.0 lbs. (0.45 kg)

Right- and Left-Hand Nail and Tool Pouches

- Leather construction
- Large pockets have rolled-over doubled edges for extra-long life
- Tunnel loop fits any belt up to 3" (76.2 mm) wide
- Heavy hammer loops



42246

Cat. No.	Pockets	Specialty Add-Ons	Belt Connection	Belt Width	Overall Size	Weight
42245	4	Right Hand Heavy Hammer Loop	Tunnel	Up to 3" (76.2 mm)	11-1/4" x 10-1/2" (285.8 x 266.7 mm)	11.5 oz. (326 g)
42246	4	Left Hand Heavy Hammer Loop	Tunnel	Up to 3" (76.2 mm)	11-1/4" x 10-1/2" (285.8 x 266.7 mm)	11.5 oz. (326 g)

Leather Bolt Bag

- Split-leather construction
- Bolt bag with bull-pin loop on each side



42247

Cat. No.	Belt Connection	Belt Width	Dimensions	Weight
42247	Tunnel	Up to 3" (76.2 mm)	5" x 8-1/2" x 8-1/2" (127.0 x 215.9 x 215.9 mm)	12.0 oz. (340 g)

Tool Pouches

Water-Repellent Canvas Pouches

- One-piece tan 12-oz. water-repellent mildew resistant canvas
- Top edge reinforced with 1/4" (6 mm) rope

Cat. No.	Belt Connection	Belt Width	Dimensions	Weight
5179	Loops	Up to 4-1/2" (114.3 mm)	7-1/2" x 3-1/2" x 7" (190.5 x 88.9 x 177.8 mm)	4.8 oz. (136 g)
5179S	Snap	Up to 4-1/2" (114.3 mm)	7-1/2" x 3-1/2" x 7" (190.5 x 88.9 x 177.8 mm)	4.8 oz. (136 g)



5179S

5179

All-Purpose Bag

- Soft, pliable cushion leather construction
- Bag is ideal for carrying loose tools and small parts
- Adjustable belt strap for attaching to belts



5146

Strap-Leather Bag

- Leather construction
- Soft, pliable cushion-leather gussets allow expansion to 3-1/4" (83 mm)
- Ventilating eyelet in bottom



5140K

Cat. No.	Belt Connection	Belt Width	Dimensions	Weight
5146	Belt Strap	Up to 3" (76.2 mm)	9" x 8" x 3" (228.6 x 203.2 x 76.2 mm)	9.6 oz. (272 g)

Cat. No.	Belt Connection	Belt Width	Dimensions	Weight
5140K	Latigo Thongs	Up to 3" (76.2 mm)	7" x 9" x 3-1/4" (177.8 x 228.6 x 82.6 mm)	10.4 oz. (295 g)

Canvas Utility Bag

- Heavy No. 8 natural canvas
- Includes interior pocket (Cat Nos. 5141P and 5142P)
- Inside bottom is reinforced with cushion leather and ventilating eyelet
- Metal snaps provided on loops for easy attachment to belts up to 3" (76 mm) wide
- Top edge reinforced with 1/4" (6 mm) rope

Cat. No.	Belt Connection	Belt Width	Dimensions	Weight
5141P	Loops	Up to 3" (76.2 mm)	10" x 12" x 5" (254.0 x 304.8 x 127.0 mm)	14.1 oz. (399 g)
5142	Loops	Up to 3" (76.2 mm)	9" x 10" x 8" x 3" (228.6 x 254.0 x 203.2 x 76.2 mm)	9.6 oz. (272 g)
5142P	Loops	Up to 3" (76.2 mm)	9" x 10" x 8" x 3" (228.6 x 254.0 x 203.2 x 76.2 mm)	10.4 oz. (295 g)



5141P

5142



Tool Pouches

Canvas Electrode Bag

- Made of tough No. 4 canvas
- Heat-resistant, hard leather bottom
- Cat. No. 5471FR is made of flame-resistant No. 4 canvas, features a flame retardant, hard-leather bottom and meets the performance requirement of NFPA -701
- Web loop for sliding over belt

Cat. No.	Diameter	Front Depth	Back Depth	Weight
5471	2-1/2" (63.5 mm)	12" (304.8 mm)	15-1/2" (393.7 mm)	4.0 oz. (113 g)
5471FR	2-1/2" (63.5 mm)	12" (304.8 mm)	15-1/2" (393.7 mm)	4.0 oz. (113 g)



Bull-Pin and Bolt Bags

- No. 4 canvas or split-leather, with double bottom
- Cat. No. 5416TFR is made of flame-resistant No. 4 canvas and meets the performance requirement of NFPA - 701
- Bolt bag with bull-pin loop on each side
- Cat. No. 5416OCTO has two D-rings on the front of the pouch and four on the inside to offer plenty of space to connect tethers, and buckle at top for closing



Cat. No.	Belt Connection	Belt Width	Dimensions	Weight
Canvas				
5416	Loops	Up to 3" (76.2 mm)	5" x 9" x 10" (127.0 x 228.6 x 254.0 mm)	13.6 oz. (386 g)
5416T	Tunnel	Up to 3" (76.2 mm)	5" x 9" x 10" (127.0 x 228.6 x 254.0 mm)	14.4 oz. (408 g)
Canvas - Fire Resistant				
5416TFR	Tunnel	Up to 3" (76.2 mm)	5" x 9" x 10" (127.0 x 228.6 x 254.0 mm)	14.4 oz. (408 g)
Canvas - Drawstring Top Closing				
5416TC	Tunnel	Up to 3" (76.2 mm)	5" x 9" x 10" (127.0 x 228.6 x 254.0 mm)	13.9 oz. (395 g)
5416TCP	Tunnel	Up to 3" (76.2 mm)	5" x 9" x 12" (127.0 x 228.6 x 304.8 mm)	1.0 lbs. (0.45 kg)
Canvas - Buckle Top Closing				
5416OCTO	Loop	Up to 3" (76.2 mm)	5" x 9" (127.0 x 228.6 mm)	12.0 oz. (340 g)
White Leather				
5416L	Tunnel	Up to 3" (76.2 mm)	5" x 9" x 10" (127.0 x 228.6 x 254.0 mm)	1.1 lbs. (0.50 kg)

Tool Combination Aprons

One-Piece Nail/Screw and Tool Pouch Apron



42242

- Split-leather construction
- Versatile, roomy double-pouch apron for construction workers, carpenters, and other professionals
- Riveted and stitched for extra durability
- Four slots for punches or nail sets
- Two heavy-duty hammer loops
- Double-pouch design allows unrestricted leg movement
- Apron is reinforced throughout with rivets
- The large pockets and nail/bolt pockets have rolled-over, doubled edges for long wear
- Heavy-duty 2" (51 mm) wide polypropylene web belt has rugged adjustable metal buckle

Cat. No.	Pockets	Belt Width	Size	Weight
42242	10	2-1/4" (57.2 mm) Web	32" to 48" (812.8 to 1219.2 mm)	1.8 lbs. (0.82 kg)

Nail/Screw and Tool Pouch Combinations

- Split-leather construction
- Large pockets have rolled-over doubled edges for extra-long life
- All pouches slide along belt for convenient working position
- Left- and right-hand nail-and-tool pouches with tunnel loop connection
- Heavy-duty 2" (51 mm) wide polypropylene web belt has rugged metal buckle and is adjustable from 32" (812.8 mm) to 48" (1219.2 mm)
- Tape-rule holder for 20' (6 m) and 25' (7.5 m) tape measures with belt clips
- Heavy hammer loops



42244

Cat. No.	Kit Contains	Weight
42244		2.0 lbs. (0.91 kg)
Cat. No.	Description	
42245	Right-Hand Nail and Tool Pouch	
42246	Left-Hand Nail and Tool Pouch	
5225	Adjustable PolyWeb Tool Belt	
5195	Medium Tape-Rule Holder	

Electrician's Tool Apron

- Made of heavy-duty canvas
- Deep pockets to fit your tools
- Loops for extra tool storage
- Tape measure holder
- Special pockets for writing utensils
- Riveted to assure long life



42200

Cat. No.	Size	Waist Size	Weight
42200	M/L	32" to 46" (812.8 to 1168.4 mm)	13.8 oz. (390 g)
42201	XL/2XL	38" to 54" (965.2 to 1371.6 mm)	14.9 oz. (422 g)

WARNING: The tool belt is not an occupational protective belt.



Tool Holders

Pliers, Folding Rule, Screwdriver, and Wrench Holder

- Black leather construction
- No exposed rivets in back
- Riveted to assure long life.
- Pockets for 7" (178 mm), 8" (203 mm) and 9" (229 mm) side-cutting pliers, most screwdrivers, 6' (1.8 m) folding rules, and open-end wrenches from 9/16" to 13/16" (14 mm to 21 mm)
- Nickel plated alloy snap



5118C

Cat. No.	Pockets	Belt Connection	Belt Width	Dimensions	Weight
5118C	4	Slotted	Up to 2" (50.8 mm)	6-1/2" x 11" (165.1 mm x 279.4 mm)	12.5 oz. (354 g)

Pliers, Rule, and Screwdriver Holders

- Black leather construction
- Three pockets for pliers, folding rule, and screwdriver
- S5118PRS has a two-way knife snap
- Riveted to assure long life
- Pockets for 7" (178 mm), 8" (203 mm) and 9" (229 mm) side-cutting pliers, most screwdrivers, 6' (1.8 m) folding rules, and open-end wrenches from 9/16" to 13/16" (14 mm to 21 mm)



5118PRS

Cat. No.	Belt Connection	Belt Width	Dimensions	Weight
5118PRS	Slotted	Up to 2" (50.8 mm)	6-3/4" x 10" (171.5 mm x 254.0 mm)	7.8 oz. (222 g)
S5118PRS	Slotted	Up to 2" (50.8 mm)	6-3/4" x 10" (171.5 mm x 254.0 mm)	9.0 oz. (255 g)

Pliers and Folding Rule Holders

- Leather construction
- Riveted to assure long life
- Pockets for 7" (178 mm), 8" (203 mm) and 9" (229 mm) side-cutting pliers and 6' (1.8 m) folding rule



5118R

5118RT

Cat. No.	Pockets	Belt Connection	Belt Width	Dimensions	Weight
5118R	2	Slotted	Up to 2" (50.8 mm)	4-3/4" x 8" (120.7 x 203.2 mm)	6.9 oz. (196 g)
5118RT	2	Tunnel	Up to 3-3/4" (95.3 mm)	4-1/2" x 12-1/2" (114.3 mm x 317.5 mm)	8.0 oz. (227 g)

Pliers and Screwdriver Holder

- Black leather construction
- Riveted to assure long life
- Pockets for 7" (178 mm), 8" (203 mm) and 9" (229 mm) and most screwdriver sizes



5118S

Cat. No.	Pockets	Belt Connection	Belt Width	Dimensions	Weight
5118S	2	Slotted	Up to 2" (50.8 mm)	4-1/4" x 10-3/4" (108.0 x 273.1 mm)	5.6 oz. (159 g)

Pliers Holders-Open Bottom

- Black leather construction
- Riveted to assure long life
- Cat. No. 5107-6 holds 6" (152 mm) or 7" (178 mm) long-nose or diagonal-cutting pliers
- Cat. No. 5107-9 holds 8" (203 mm) or 9" (229 mm) long-nose or diagonal-cutting pliers



5107-6

Cat. No.	Belt Connection	Belt Width	Dimensions	Weight
5107-6	Slotted	Up to 2" (50.8 mm)	3-1/2" x 8-1/2" (88.9 mm x 215.9 mm)	2.7 oz. (77 g)
5107-9	Slotted	Up to 2" (50.8 mm)	3-3/4" x 11" (95.3 x 279.4 mm)	4.2 oz. (119 g)

Pliers Holder-Closed Bottom

- Black leather construction
- Nose of pliers does not protrude from closed bottom
- Bottom is vented to prevent collection of dirt or water
- Riveted to assure long life
- Holds 7" (178 mm), 8" (203 mm), and 9" (229 mm) side-cutting pliers



5112

Cat. No.	Belt Connection	Belt Width	Dimensions	Weight
5112	Slotted	Up to 2" (50.8 mm)	3-1/4" x 11" (82.6 x 279.4 mm)	3.4 oz. (96 g)

Tool Holders

Scissors Holder-Tunnel

- Black leather construction
- Cat. No. 5100M is stitched and riveted to assure long life
- Cat. No. 5101 is riveted construction for long life

Cat. No.	Belt Connection	Belt Width	Dimensions	For Use With	Weight
5100M	Tunnel	Up to 2" (50.8 mm)	2" x 8" (50.8 x 203.2 mm)	Klein Cutting Tools (Cat. Nos. 22000, 22001, 22003, 22003 and 22008)	2.4 oz. (68 g)
5101	Tunnel	Up to 1-1/2" (38.1 mm)	2" to 7" (50.8 to 177.8 mm)	Klein Electrician's Scissors (Cat. Nos. 2100-5 and 2100-7)	1.8 oz. (50 g)



Scissors and Cable-Splicer's Knife Holders

- Black leather construction
- Specially designed to hold a pair of Klein electrician's scissors (Cat. Nos. 2100-5 or 2100-7, 2100-8, 2100-9), and Cat. No. 44200 cable-splicer's knife
- Stitched and riveted to assure long life



5187 5187T

Cat. No.	Belt Connection	Belt Width	Dimensions	Weight
5187	Slotted	Up to 2-1/4" (57.2 mm)	2" x 7-1/4" (50.8 x 184.2 mm)	1.8 oz. (51 g)
5187T	Tunnel	Up to 2-1/4" (57.2 mm)	2" x 7-1/4" (50.8 mm x 184.2 mm)	2.1 oz. (59 g)

Cable-Splicer's Knife Holders

- Black leather construction
- Designed to hold Cat. No. 44200 cable-splicer's knife
- Riveted and stitched for long life



5188 5188T

Cat. No.	Belt Connection	Belt Width	Dimensions	Weight
5188	Slotted	Up to 2-1/4" (57.2 mm)	2-1/8" x 7-3/4" (54 mm x 196.9 mm)	1.3 oz. (37 g)
5188T	Tunnel	Up to 2-1/4" (57.2 mm)	2-1/8" x 7-1/4" (54.0 mm x 184.2 mm)	1.8 oz. (50 g)

Lineman's Knife Holder

- Black leather construction
- Designed for Klein skinning knives Cat. Nos. 1570-3, 1570-3LR, and 1560-3
- Riveted to assure long life



5163

Cat. No.	Belt Connection	Belt Width	Dimensions	Weight
5163	Slotted	Up to 2" (50.8 mm)	3-1/2" x 9-3/8" (88.9 mm x 238.1 mm)	3.4 oz. (96 g)

Knife Holder

- Black leather construction
- Designed for utility knives and Klein Cat. Nos. 44100 and 44105
- Corners riveted and stitched for long life



5185

Cat. No.	Belt Connection	Belt Width	Dimensions	Weight
5185	Slotted	Up to 2-1/2" (63.5 mm)	2-5/8" x 8-1/4" (66.7 x 209.6 mm)	1.8 oz. (50 g)



Tool Holders

Flashlight Holder

- Black leather construction
- Designed for a standard two-cell flashlight
- Riveted to assure long life

Cat. No.	Belt Connection	Belt Width	Dimensions	Weight
5129	Slotted	Up to 2-1/4" (57.2 mm)	3" x 9-1/2" (76.2 mm x 241.3 mm)	3.5 oz. (99 g)



5129

Hammer Holders

- Black leather construction
- Heavy-metal hammer loop riveted to panel
- Riveted and stitched to assure long life
- Holds Klein® hammers except lineman's and mining/specialty hammers



5456

5456T

5456TS

Cat. No.	Belt Connection	Belt Width	Dimensions	Weight
5456	Slotted	Up to 2-1/2" (63.5 mm)	4-5/16" x 7-7/8" (109.5 mm x 200.0 mm)	5.3 oz. (150 g)
5456T	Tunnel	Up to 4" (101.6 mm)	4-5/16" x 10" (109.5 x 254.0 mm)	6.7 oz. (191 g)
5456TS	Tunnel	Up to 4" (101.6 mm)	4-5/16" x 10" (109.5 x 254.0 mm)	6.7 oz. (191 g)

Bull-Pin Holders

- Leather construction
- Riveted to assure long life
- Holds all standard bull pins



5417

5417T

Cat. No.	Belt Connection	Belt Width	Dimensions	Weight
5417	Slotted	Up to 2" (50.8 mm)	3-1/4" x 11" (82.6 x 279.4 mm)	3.5 oz. (99 g)
5417T	Tunnel	Up to 3-1/2" (88.9 mm)	3-1/4" x 12-1/4" (82.6 x 311.2 mm)	5.1 oz. (145 g)

Tape Measure Holders

- Leather construction
- Cut-out sides for easy access to tape
- Slotted for attaching to belts up to 2-1/2" (63 mm) wide
- Riveted to assure long life



5195

Cat. No.	Description	Dimensions	Weight
5194	Small Tape Measure Holder	4" x 6" (101.6 x 152.4 mm)	2.6 oz. (73 g)
5195	Medium Tape Measure Holder	4-1/2" x 7" (114.3 mm x 177.8 mm)	2.9 oz. (82 g)
5196	Large Tape Measure Holder	5" x 7" (127.0 mm x 177.8 mm)	3.4 oz. (96 g)

Klein Tape Measure Sizing Guide

Tape Measure	Holder Cat. No.	Description
86216, 86315	5195	Medium Leather Pouch
86125, 86225, 86375	5196	Large Leather Pouch
86230	5196	Large Leather Pouch

Erection Wrench Holders



5459T

5460

5461T

- Leather construction
- Has tool slots for two erection wrenches
- Cat. No. 5461T has cotton web tunnel loop
- Tunnel loop on Cat. No. 5459T and 5461T is riveted to assure long life
- Holds erection wrenches and adjustable head construction wrench Cat. No. 3239

Cat. No.	Belt Connection	Belt Width	Dimensions	Weight
5459T	Tunnel	Up to 3-1/2" (88.9 mm) or to Slide Over D-Rings, Buckles, and Other Accessories	6" x 9-1/2" (152.4 x 241.3 mm)	5.1 oz. (145 g)
5460	Slotted	Up to 2" (50.8 mm)	6" x 8-1/2" (152.4 x 215.9 mm)	3.0 oz. (85 g)
5461T	Cotton Web Tunnel	Up to 2" (50.8 mm)	6" x 10" (152.4 x 254.0 mm)	4.2 oz. (119 g)

Tool Holders

Tie-Wire Reel Pad

- Worn on the belt under the Klein® tie-wire reel (Cat. No. 27400)
- Made of 3/16" (5 mm) thick rigging leather
- Slots accommodate belts up to 2" (51 mm) wide
- Underside has a sponge-rubber pad to minimize hip fatigue



27450

Cat. No.	Length	Width	Weight
27450	7" (177.8 mm)	7" (177.8 mm)	4.8 oz. (136 g)

Tie-wire reel and ironworker's heavy-duty tie-wire belts also available.

Connecting Bar Holder with Lock Collar

- Lock Collar fits Klein® 7/8" (22 mm) connecting bars (Cat. Nos. 3246 and 3248)
- Leather construction
- Tunnel loop allows for weight distribution on belt
- Fits belts up to 3-1/2" (89 mm) wide
- Replacement lock collar (Cat. No. 5459C) is available



5459C



5459SLVR

Cat. No.	Belt Connection	Belt Width	Dimensions	Weight
5459SLVR	Tunnel	Up to 3-1/2" (88.9 mm)	3" x 6-3/4" (76.2 mm x 171.5 mm)	3.2 oz. (91 g)

WARNING: Lock collar should ONLY be used on Klein 7/8" connecting bars. Lock collar must be installed on connecting bar before using holder.

Tape Thong

- Leather strap with fiber bar
- Fits all standard electrical tape rolls

Cat. No.	Belt Connection	Length	Weight
5130	Slotted	12" (304.8 mm)	0.5 oz. (14 g)



5130

Snap Loop

- Black leather construction
- Designed for tools with hang holes
- Loop with snap hook for carrying an adjustable wrench, welder's igniter or other tool with hang hole
- Riveted to assure long life

Cat. No.	Belt Connection	Belt Width	Dimensions	Weight
5458	Slides On	Up to 4" (101.6 mm)	1-1/2" x 8-1/2" (38.1 mm x 215.9 mm)	2.4 oz. (68 g)



5458

Two-Way Snap

- Black leather construction
- Screw-type rivets for easy attachment to belts

Cat. No.	Belt Connection	Length	Weight
5131	Screw Rivets	4-1/2" (114.3 mm)	1.6 oz. (45 g)



5131

Tool Guards

Axe Guard

- Protect both tool and user with a Klein guard for your edged tools
- Made of 1/16" (1.6 mm) vulcanized hard fiber, securely riveted and equipped with adjustable web straps to hold the tool



5509

Cat. No.	Description	Weight
5509	Axe Guard	3.5 oz. (99 g)

Splitting-Knife Guards

- Leather construction



5574L



5574S

Cat. No.	Description	For Use With	Weight
5574L	Splitting Knife Guard Large	Klein Knife, Cat. No. 1515-1	2.1 oz. (59 g)
5574S	Splitting Knife Guard Small	Klein Knife, Cat. No. 1515-S	0.8 oz. (23 g)



TRADESMAN PRO™

Electrician's Tool Belt



55427

Drill bit pocket

- 26 pockets for easy tool storage
- Wide open pockets for tools, drills and spare parts
- Removable pouches allow you to carry only the tools needed
- Handles for easy carrying
- Loop tape measure holder
- Padded belt with mesh interior is breathable and comfortable
- Rugged leather belt ends
- Attachments for Tradesman Pro™ padded suspenders (Cat. No. 55400)

Cat. No.	Description	Waist Size	Weight
55427	Tradesman Pro Electricians Tool Belt, M	31" to 34" (787.4 to 863.6 mm)	4.2 lbs. (1.91 kg)
55428	Tradesman Pro Electricians Tool Belt, L	35" to 39" (889.0 to 990.6 mm)	4.2 lbs. (1.91 kg)
55429	Tradesman Pro™ Electricians Tool Belt, XL	40" to 44" (1016.0 to 1117.6 mm)	4.3 lbs. (1.95 kg)

WARNING: This is NOT an occupational protective belt. NOT for fall arrest or back support.

15-Pocket Tool Pouch

- Heavy duty reinforced bottom
- Features multiple pockets of various sizes, plus a tape thong
- Great for carrying a mix of tools and job site consumables
- Includes a padded shoulder strap for easy carrying to use without a belt
- Tunnel loop fits 2 inch (50.8 mm) belts



NEW!

5243

Cat. No.	Width	Height	Depth	Weight
5243 NEW!	10" (254 mm)	11-1/2" (292.1 mm)	4-1/2" (114.3 mm)	1.8 lbs. (0.82 kg)

9-Pocket Tool Pouch

- Heavy duty reinforced bottom
- Deep center pocket and closed front pocket to carry small parts
- Includes an array of other pockets for various tools, plus a tape thong
- Convenient handle for "pick up and go" mobility; shoulder strap for hands free carry
- Tunnel loop fits 2 inch (50.8 mm) belts



NEW!

5242

Cat. No.	Width	Height	Depth	Weight
5242 NEW!	7-1/2" (190.5 mm)	9-1/2" (241.3 mm)	4" (101.6 mm)	1.2 lbs. (0.54 kg)

TRADESMAN PRO™

6-Pocket Tool Pouch

- Heavy duty reinforced bottom
- Features one deep center pocket, five outside pockets, plus tape thong
- Carry a variety of screwdrivers and other tools
- Tunnel loop fits 2 inch (50.8 mm) belts



NEW!



5241

Cat. No.	Width	Height	Depth	Weight
5241 NEW!	6-3/4" (171.5 mm)	10-1/4" (260.4 mm)	4" (101.6 mm)	13.0 oz. (369 g)

Maintenance Pouch

- Just enough pockets for your essential tools
- Includes a tape thong
- Tunnel loop fits 2 inch (51 mm) belts
- Easy grab and go styling keeps your basic tools right at hand



NEW!

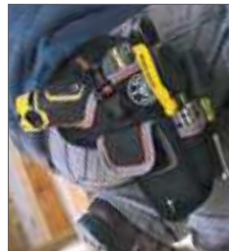


5240

Cat. No.	Width	Height	Depth	Weight
5240 NEW!	5-1/2" (139.7 mm)	10-1/4" (260.4 mm)	1-1/2" (38.1 mm)	6.2 oz. (176 g)

Drill Pouch

- Fits most impact and battery drills
- Strap closure keeps drill in place
- Pockets for a variety of drill bits
- Compatible with belts up to 2" (51 mm) wide



5183

Cat. No.	Width	Height	Depth	Weight
5183	3" (76.2 mm)	12-1/4" (311.2 mm)	3" (76 mm)	7.5 oz. (213 g)

4-Pocket Tool Apron

- Heavy duty reinforced bottom so tools won't poke through
- Two large open pockets for parts
- Two pockets for assorted tools
- Includes pencil/marker pockets and a tape thong
- Adjustable belt fits waist sizes 32" (812.8 mm) to 53" (1346.2 mm)



NEW!

5244

Cat. No.	Width	Height	Depth	Weight
5244 NEW!	19" (482.6 mm)	10-1/2" (266.7 mm)	1/2" (12.7 mm)	1.4 lbs. (0.64 kg)

WARNING: The tool belt is not an occupational protective belt.



TRADESMAN PRO™

Padded Suspenders

- Tear resistant
- Fully adjustable
- Durable nylon web straps for long wear
- Heavy duty padding for comfort
- Easy snap hook fastening system
- Designed for use with Tradesman Pro™ Organizer electrician's tool belt (Cat. Nos. 55427, 55428, 55429)



55400

Cat. No.	Size	Weight
55400	One Size Fits Most	13.4 oz. (381 g)

Padded Tool Belt

NEW!



5247

- 2 inch wide belt features padded liner with breathable mesh interior
- Thick, rugged leather belt ends
- Side handles for ease of lifting
- Includes metal connection points to attach suspenders for extra support

Cat. No.	Size	Waist Size	Weight
5245 NEW!	Medium	31" to 34" (787.4 to 863.6 mm)	1.0 lbs. (0.45 kg)
5246 NEW!	Large	35" to 39" (889.0 to 990.6 mm)	1.3 lbs. (0.59 kg)
5247 NEW!	Extra Large	40" to 44" (1016.0 to 1117.6 mm)	1.0 lbs. (0.45 kg)

Knife Holder

- Holds up to a 4-1/2" (114.3 mm) knife
- Metal clip attaches securely to belt or pocket
- Magnetic closure keeps top flap firmly in place
- Cat. No. 55561 features camo design

Cat. No.	Width	Height	Weight
55561	2-1/4" (57.2 mm)	5-3/4" (146.1 mm)	3.5 oz. (99 g)
5248 NEW!	2-1/2" (63.5 mm)	5-1/4" (133.4 mm)	3.0 oz. (85 g)



55561



5248



Realtree AP-XTRA Camouflage Design
© 2012 of Jordan Outdoor Enterprises, Ltd., all rights reserved.

Mobile Phone Holders

- Cat. Nos. 55460 and 55562 fit iPhone® 4 and 5, and similar sized phones
- Cat. No. 55461 and 55563 Fits Samsung Galaxy S® 3 and 4, iPhone® 6 and similar sized phones
- Cat. No. 55468 and 55564 Fits iPhone® 6 Plus and Samsung® Note Edge
- Metal clip for attaching to belts up to 2" wide
- Magnetic flap closure
- Constructed of 1680d ballistic weave



55563



55564



55460

Realtree AP-XTRA Camouflage Design
© 2012 of Jordan Outdoor Enterprises, Ltd., all rights reserved.



Cat. No.	Description	Width	Height	Depth	Weight
55460	Tradesman Pro™ Phone Holder Small	2-29/32" (73.8 mm)	5-3/4" (146.1 mm)	1-1/2" (38.1 mm)	3.5 oz. (99 g)
55461	Tradesman Pro™ Phone Holder Large	3-19/64" (83.7 mm)	5-7/8" (149.2 mm)	1-1/2" (38.1 mm)	4.2 oz. (119 g)
55468 NEW!	Tradesman Pro™ Phone Holder, XL	3-3/4" (95.3 mm)	6-3/4" (171.5 mm)	1-1/2" (38.1 mm)	4.2 oz. (119 g)
55562	Camo Phone Holder, Small	2-29/32" (73.8 mm)	5-3/4" (146.1 mm)	1-1/2" (38.1 mm)	3.5 oz. (99 g)
55563	Camo Phone Holder, Large	3-19/64" (83.7 mm)	6" (152.4 mm)	1-1/2" (38.1 mm)	4.2 oz. (119 g)
55564	Camo Phone Holder, Extra-Large	3-3/4" (95.3 mm)	6-3/4" (171.5 mm)	1-1/2" (38.1 mm)	4.2 oz. (119 g)

TRADESMAN PRO™

Carrying Cases

- Two layers of padding protect even delicate instruments
- Heavy-duty zipper and rugged PVC coated polyester for durability
- One interior and one exterior pocket for quick access and organization
- Sturdy handle with box stitching for secure transportation and convenient hanging. Constructed of 1680d ballistic weave
- Cat. Nos. 69406 and 69407 recommended for meters, testers, infrared guns, and small tools
- Cat. No. 69408 is recommended for meters, testers, borescopes, infrared guns and tools
- Proudly built in U.S.A. with global components



69406



69407



69408

Cat. No.	Pockets	Width	Height	Depth	Weight
69406	1	4-1/2" (114.3 mm)	9-1/4" (235.0 mm)	2-1/4" (57.2 mm)	6.1 oz. (173 g)
69407	2	6" (152.4 mm)	10-1/4" (260.4 mm)	2-1/4" (57.2 mm)	8.5 oz. (240 g)
69408	2	7" (177.8 mm)	10-1/4" (260.4 mm)	2-1/4" (57.2 mm)	10.6 oz. (299 g)

Hard Cases

- Hard shell protects tools, meters, small parts and tech devices
- Soft interior lining
- Durable zipper closure



5189



5184

Cat. No.	Width	Height	Depth	Weight
5184	6-1/2" (165.1 mm)	8-3/4" (222.3 mm)	2-1/4" (57.2 mm)	10.1 oz. (286 g)
5189	5-1/2" (139.7 mm)	10-1/4" (260.4 mm)	2-1/4" (57.2 mm)	10.1 oz. (286 g)

Tool Pouches, Carriers, Belts & Suspenders



PowerLine™ Series



Constructed of double layered 1000 denier washable Cordura® fabric

Double nylon-stitched and rivet reinforced for extra durability

Lightweight and comfortable in warm climates, soft and pliable in cold climates

Oversized pockets and reinforced bottom for extra carrying capacity, as well as durability

Exceptional resistance to abrasion, punctures, and tearing

No break-in period; naturally forms and hugs the body, making it easy to wear for everyday use

Heavy-duty, nylon webbing

Washable

Cordura® is a registered trademark of INVISTA for durable fabrics



Tool Pouches



5700



5701



5702



5703

Cat. No.	Description	Pockets	Dimensions	Weight
5700	PowerLine™ Series 9 Pocket Tool Pouch	9	11" x 12" (279.4 mm x 304.8 mm)	14.7 oz. (417 g)
5701	PowerLine™ Series 8 Pocket Tool Pouch	8	11" x 12" (279.4 mm x 304.8 mm)	13.3 oz. (377 g)
5702	PowerLine™ Series 2 Pocket Utility Pouch	2	11" x 12" (279.4 mm x 304.8 mm)	10.2 oz. (289 g)
5703	PowerLine™ Series 3 Pocket Utility Pouch	3	11" x 12" (279.4 mm x 304.8 mm)	12.0 oz. (340 g)
5718	PowerLine™ Series 8 Pocket Tool Pouch	8	11" x 12" (279.4 mm x 304.8 mm)	11.8 oz. (335 g)
5719	PowerLine™ Series 18 Pocket Electrician Tool Pouch	18	11" x 12" (279.4 mm x 304.8 mm)	13.9 oz. (394 g)



5718



5719

PowerLine™ Series

Tape Measure Pouch

Additional Features:

- Holds most 35-foot (11 m) tape measures, fasteners, nails, or wire nuts
- Two inside elastic loops fit screwdrivers, pencils, markers, etc.



5712

Tape Measure Holder

Additional Features:

- Holds most tape measures with belt clips
- Stainless steel clip holder accepts most tape clips up to 1-3/4" (44 mm) wide



5707

Cat. No.	Belt Connection	Belt Width	Dimensions	Weight
5712	Tunnel	Up to 2-1/4" (57.2 mm)	8-1/4" x 4-1/2" (209.6 mm x 114.3 mm)	3.8 oz. (108 g)

Cat. No.	Belt Connection	Belt Width	Dimensions	Weight
5707	Tunnel	Up to 2-1/4" (57.2 mm)	4-1/8" x 3-3/4" (104.8 mm x 95.3 mm)	1.6 oz. (45 g)

Closeable Pouch

Additional Features:

- Closeable pouch helps protect supplies and tools



5714

Hammer Holder

Additional Features:

- Heavy-metal hammer loop riveted for additional strength



5706

Cat. No.	Belt Connection	Belt Width	Dimensions	Weight
5714	Tunnel	Up to 2-1/4" (57.2 mm)	7-1/2" x 6-3/4" (190.5 mm x 171.5 mm)	3.8 oz. (108 g)

Cat. No.	Belt Connection	Belt Width	Dimensions	Weight
5706	Tunnel	Up to 2-1/4" (57.2 mm)	4-1/8" x 3-3/4" (104.8 mm x 95.3 mm)	3.0 lbs. (1.36 kg)

Multi-Purpose Holder

Additional Features:

- Holds a flashlight, cellular phone, or electrical tester



5708

Utility Knife Holder

Additional Features:

- Holds standard utility knife or other small tools



5716

Cat. No.	Belt Connection	Belt Width	Dimensions	Weight
5708	Tunnel	Up to 2-1/4" (57.2 mm)	3-1/4" x 8-1/2" (82.6 mm x 215.9 mm)	2.1 oz. (60 g)

Cat. No.	Belt Connection	Belt Width	Dimensions	Weight
5716	Tunnel	Up to 2-1/4" (57.2 mm)	7-3/4" x 2-1/2" (196.9 mm x 63.5 mm)	2.4 oz. (68 g)

Flashlight Holder

Additional Features:

- Accommodates most "D" cell size battery flashlights up to 1-7/8" (48 mm) in diameter
- Heavy-duty, 1-1/2" (38 mm) wide nylon webbing for extra strength
- Riveted to assure long life



5713

Padded Suspenders

Additional Features:

- Fully adjustable length - front and back
- Heavy-duty, 1-1/2" (38 mm) wide nylon web strap for extra strength and long wear
- Convenient fastening system features genuine VELCRO® brand touch fasteners
- Heavy-duty padding for user comfort



5717

Cat. No.	Belt Connection	Belt Width	Dimensions	Weight
5713	Tunnel	Up to 2-1/4" (57.2 mm)	4-1/4" x 2-3/8" (108.0 mm x 60.3 mm)	1 oz. (27 g)

Cat. No.	Size	Weight
5717	One Size Fits Most	13.4 oz. (381 g)

Velcro® is a registered trademark of Velcro Industries B.V.



PowerLine™ Series

Adjustable Web Work Belt



5705

Additional Features:

- Heavy-duty, 2" (51 mm) wide nylon webbing for extra strength
- Accommodates tunnel loop and slotted tool pouches and holders
- Rugged metal buckle for quick release and adjustment

Cat. No.	Size	Width	Weight
5705	One Size Fits up to 54" (1371.6 mm) Waist	2" (50.8 mm)	9.0 oz. (255 g)

Padded Tool Belts



5704L

Additional Features:

- 5" (17 mm) cushioned pad for stability and comfort
- Tapered front for comfort while bending
- Heavy-duty 2" (51 mm) wide nylon web belt with rugged metal buckle

Cat. No.	Description	Size	Width	Weight
5704M	PowerLine™ Padded Tool Belt (Medium)	32" to 36" (812.8 to 914.4 mm)	2" (50.8 mm)	1 lb. (0.45 kg)
5704L	PowerLine™ Padded Tool Belt (Large)	36" to 40" (914.4 to 1016.0 mm)	2" (50.8 mm)	1.0 lbs. (0.45 kg)
5704XL	PowerLine™ Padded Tool Belt	40" to 44" (1016.0 to 1117.6 mm)	2" (50.8 mm)	1.1 lbs. (0.50 kg)

4-Piece Combo Sets

- 8-Pocket Tool Pouch (Cat. No. 5701)
- 3-Pocket Utility Pouch (Cat. No. 5703)
- Hammer Holder (Cat. No. 5706)
- Sized Padded Tool Belt (Cat. No. 5704M, 5704L or 5704XL)



5709L

Cat. No.	Description	Size	Belt Width	Weight
5709M	PowerLine™ 4 Piece Combo Set Medium	32" to 36" (812.8 to 914.4 mm)	2" (50.8 mm)	2.7 lbs. (1.22 kg)
5709L	PowerLine™ 4 Piece Combo Set Large	36" to 40" (914.4 to 1016.0 mm)	2" (50.8 mm)	2.8 lbs. (1.27 kg)
5709XL	PowerLine™ 4 Piece Combo Set Extra Large	40" to 44" (1016.0 to 1117.6 mm)	2" (50.8 mm)	2.8 lbs. (1.27 kg)

4-Piece Electrician's Combo Sets

- 8-Pocket Tool Pouch (Cat. No. 5718)
- 19-Pocket Tool Pouch (Cat. No. 5719)
- Hammer Holder (Cat. No. 5706)
- Sized Padded Tool Belt (Cat. No. 5704M, 5704L or 5704XL)



5710M

Cat. No.	Description	Size	Belt Width	Weight
5710M	Electricians Combo Set 4 Pc, M	32" to 36" (812.8 to 914.4 mm)	2" (50.8 mm)	2.8 lbs. (1.27 kg)
5710L	Electricians Combo Set 4 Pc, L	36" to 40" (914.4 to 1016.0 mm)	2" (50.8 mm)	2.8 lbs. (1.27 kg)
5710XL	Electricians Combo Set 4 Pc, XL	40" to 44" (1016.0 to 1117.6 mm)	2" (50.8 mm)	3.1 lbs. (1.41 kg)

WARNING: This is NOT an occupational protective belt.

WARNING: NOT for fall arrest or back support.

Tool Belts

Lightweight Tool Belt

- Black leather construction
- Designed to carry lightweight tool pouches

Cat. No.	Waist Size	Belt Width	Weight
5201	33" to 45" (838.2 to 1143.0 mm)	1" (25.4 mm)	4.8 oz. (136 g)



5201

General-Purpose Belts

- Strong, heavy-duty black leather construction
- Removable single-tongue buckle held by two heavy-duty snaps

Cat. No.	Description	Waist Size	Belt Width	Weight
5202M	General-Purpose Belt (Medium)	32" to 40" (812.8 to 1016 mm)	1-1/2" (38.1 mm)	6.4 oz. (181 g)
5202L	General-Purpose Belt (Large)	38" to 46" (965.2 to 1168.4 mm)	1-1/2" (38.1 mm)	7.2 oz. (204 g)
5202XL	General-Purpose Belt	46" to 54" (1168.4 to 1371.6 mm)	1-1/2" (38.1 mm)	8.0 oz. (227 g)



5202L

Lightweight Utility Belt

- Strong, lightweight blue polypropylene web
- Quickly adjusts for waist sizes through 52" (1321 mm)
- Accepts tunnel-loop and slotted pouches and holders
- Tough, molded, non-metallic, slide-action buckle provides single-handed, quick release and adjustment

Cat. No.	Waist Size	Belt Width	Weight
5204	One Size Fits All	2" (50.8 mm)	3.2 oz. (91 g)



5204

Adjustable Web Tool Belt

- Fits waist sizes up to 48" (1219 mm)
- Accommodates tunnel loop and slotted tool pouches and holders
- 2" (51 mm) wide polypropylene webbing
- Rugged metal buckle for quick release and easy adjustment
- Corrosion resistant hardware

Cat. No.	Waist Size	Belt Width	Weight
5225	32" to 48" (812.8 to 1219.2 mm)	2" (50.8 mm)	6.7 oz. (191 g)



5225

Heavy-Duty Embossed Tool Belts

- Strong, heavy-duty leather
- Equipped with a double-tongue buckle

Cat. No.	Description	Waist Size	Belt Width	Weight
5415S	Heavy-Duty Embossed Tool Belt, Small	32" to 40" (812.8 to 1016 mm)	2" (50.8 mm)	10.1 oz. (286 g)
5415	Heavy-Duty Embossed Tool Belt, Medium	36" to 44" (914.4 to 1117.6 mm)	2" (50.8 mm)	10.2 oz. (290 g)
5415L	Heavy-Duty Embossed Tool Belt, Large	40" to 48" (1016 to 1219.2 mm)	2" (50.8 mm)	10.2 oz. (290 g)
5415XL	Heavy Duty Embossed Tool Belt, XL	44" to 52" (1117.6 to 1320.8 mm)	2" (50.8 mm)	10.4 oz. (295 g)



5415



Tool Belts

Cotton/Polyester Blend Tool Belt w/Quick-Release Buckle

- NOT an occupational protective belt. ONLY use as a tool belt
- Features a forged, quick-release buckle for emergency situations where the user has to quickly disengage the belt (for example, when working over water or in grain elevators)
- Must be worn over the user's harness and clothing so it will drop free when released
- Belt is made of a mildew-resistant blend of cotton/polyester webbing for comfort and strength

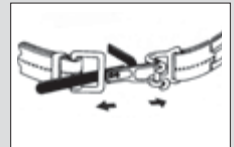
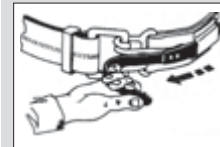


5425M

Cat. No.	Description	Waist Size	Weight
5425M	Tool Belt with Quick Release Buckle, M	30" to 44" (762.0 to 1117.6 mm)	1.5 lbs. (0.68 kg)
5425XL	Tool Belt with Quick Release Buckle, XL	38" to 58" (965.2 to 1473.2 mm)	1.7 lbs. (0.77 kg)

Designed for Quick Release

1. Pull free end of release strap to disengage other end from retainer.
2. Pulling action rotates clasp to open position.
3. Disengaged clasp allows belt to separate.



Ironworker's Heavy-Duty Tie-Wire Belts

- Leather construction
- Rugged 2" (51 mm) wide belt
- Has separate reel-strap with its own buckle that lets you quickly and conveniently put on or take off a Klein tie-wire reel and optional pad without removing the belt or your tool pouch
- Strong double-tongue buckle with keeper
- Embossed basket-weave pattern



5420L

Cat. No.	Description	Waist Size	Belt Width	Weight
5420S	Ironworkers Heavy Duty Tie Wire Belt, S	32" to 40" (812.8 to 1016.0 mm)	2" (50.8 mm)	13.6 oz. (386 g)
5420	Ironworkers Heavy Duty Tie Wire Belt, M	36" to 44" (914.4 to 1117.6 mm)	2" (50.8 mm)	15.2 oz. (431 g)
5420L	Ironworkers Heavy Duty Tie Wire Belt, L	40" to 48" (1016.0 to 1219.2 mm)	2" (50.8 mm)	1.1 lbs. (0.50 kg)
5420XL	Ironworker's Heavy Duty Tie-Wire Belt XL	44" to 52" (1117.6 to 1320.8 mm)	2" (50.8 mm)	1.2 lbs. (0.54 kg)

Tie wire reel and tie wire pad also available

Sets

10 Pocket Tool Pouch and Belt Set

- Combines the popular Cat. No. 5165 black leather 10 pocket pouch and Cat. No. 5202 general purpose black leather belt
- Belt is embossed to guide cutting and reduce size from large to medium
- Belt fits 32" to 46" waist sizes (813 mm - 1,168 mm) and is 1-1/2" (38 mm) wide
- Four large capacity utility pockets, two pliers pockets, four screwdriver loops and knife snap
- Pouch is riveted and stitched to assure long life
- Top grain leather construction



55210

Cat. No.	Pockets	Waist Size	Belt Width	Dimensions	Specialty Add-Ons	Weight
55210	10	32" to 46" (812.8 to 1168.4 mm)	1-1/2" (38.1 mm)	10" x 10" (254 mm x 254 mm)	Knife Snap	1.20 lbs. (0.54 kg)

WARNING: This is NOT an occupational protective belt.

WARNING: NOT for fall arrest or back support.

Suspenders

Suspenders

- Clips and slides are nickel-plated for corrosion resistance
- Extra-strong belt clips have alligator teeth for added gripping power
- One size fits all

Cat. No.	Description	Color	Strap Width	Leather-Back Strap Spreader	Weight
60210B	Nylon-Web Suspenders	Blue	2" (50.8 mm)	Adjustable	10.1 oz. (286 g)
60223B	Elastic-Back Suspenders	Blue	2" (50.8 mm)	Non-Adjustable	9.6 oz. (272 g)



60223B

Suspender Accessories

Leather Cushion Belt Pads

- Deluxe leather pad is 4" (102 mm) wide
- Thick leather back with four snap-open straps for easy attachment to any belt up to 2" (51 mm) wide
- Sponge-padded leather liner has rounded edges, and is permanently stitched to the back
- Durable and comfortable pad to wear for prolonged work periods
- When sizing a belt to accommodate this pad, add 2" (51 mm) to 4" (102 mm) to the belt waist size

Cat. No.	Length	Width	Weight
87904	22" (558.8 mm)	4" (101.6 mm)	15.8 oz. (449 g)
87906	30" (762.0 mm)	4" (101.6 mm)	1.0 lbs. (0.45 kg)



87904