



Chipsmall Limited consists of a professional team with an average of over 10 year of expertise in the distribution of electronic components. Based in Hongkong, we have already established firm and mutual-benefit business relationships with customers from,Europe,America and south Asia,supplying obsolete and hard-to-find components to meet their specific needs.

With the principle of “Quality Parts,Customers Priority,Honest Operation,and Considerate Service”,our business mainly focus on the distribution of electronic components. Line cards we deal with include Microchip,ALPS,ROHM,Xilinx,Pulse,ON,Everlight and Freescale. Main products comprise IC,Modules,Potentiometer,IC Socket,Relay,Connector.Our parts cover such applications as commercial,industrial, and automotives areas.

We are looking forward to setting up business relationship with you and hope to provide you with the best service and solution. Let us make a better world for our industry!



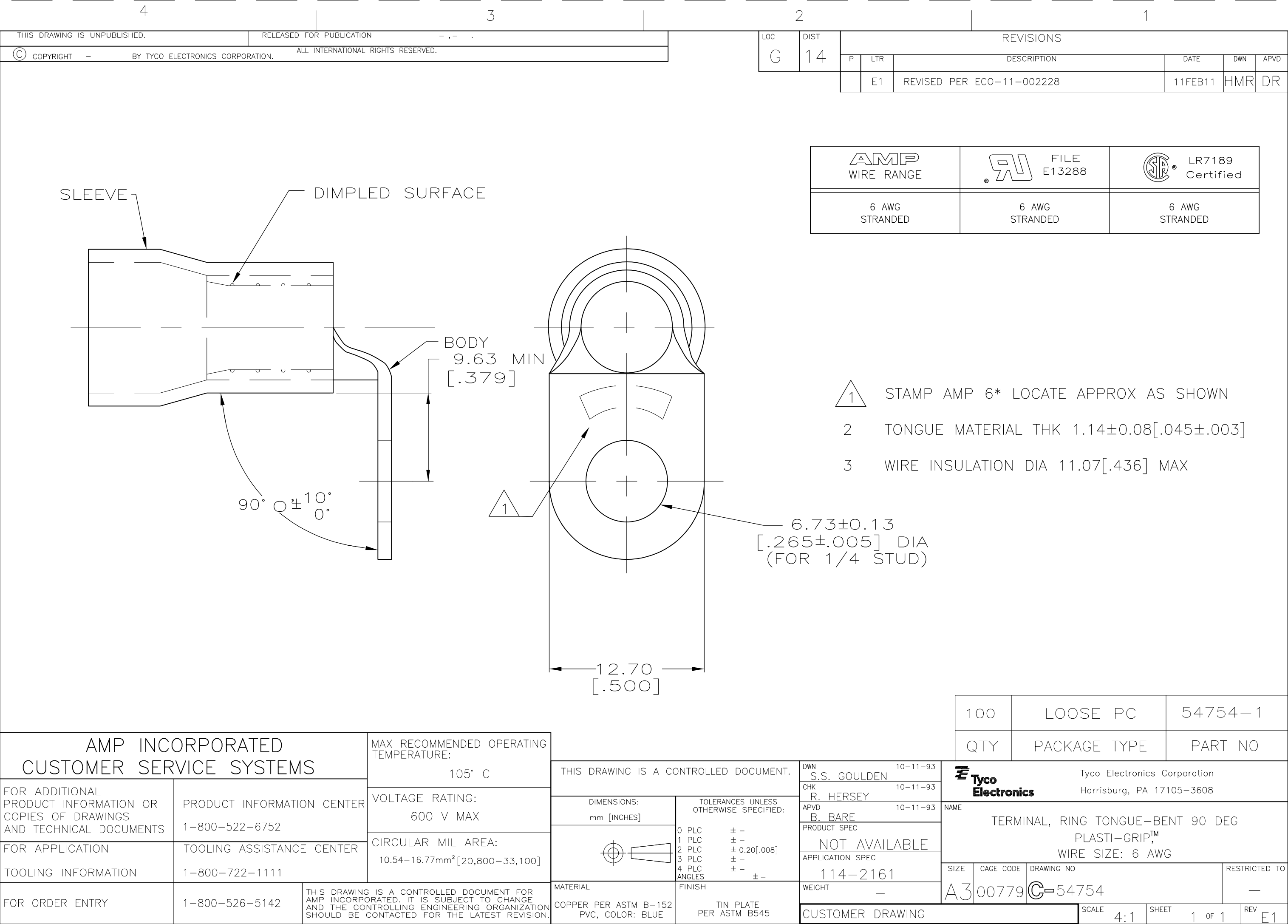
Contact us

Tel: +86-755-8981 8866 Fax: +86-755-8427 6832

Email & Skype: info@chipsmall.com Web: www.chipsmall.com

Address: A1208, Overseas Decoration Building, #122 Zhenhua RD., Futian, Shenzhen, China





SLEEVE

DIMPLED SURFACE

BODY

9.63 MIN

[.379]

90° ± 10°

0°

12.70

[.500]

6.73±0.13

[.265±.005] DIA

(FOR 1/4 STUD)

1

1

STAMP AMP 6* LOCATE APPROX AS SHOWN

2

TONGUE MATERIAL THK 1.14±0.08[.045±.003]

3

WIRE INSULATION DIA 11.07[.436] MAX

AMP INCORPORATED

CUSTOMER SERVICE SYSTEMS

FOR ADDITIONAL

PRODUCT INFORMATION OR

COPIES OF DRAWINGS

AND TECHNICAL DOCUMENTS

FOR APPLICATION

TOOLING INFORMATION

FOR ORDER ENTRY

PRODUCT INFORMATION CENTER

1-800-522-6752

TOOLING ASSISTANCE CENTER

1-800-722-1111

1-800-526-5142

THIS DRAWING IS A CONTROLLED DOCUMENT FOR

AMP INCORPORATED. IT IS SUBJECT TO CHANGE

AND THE CONTROLLING ENGINEERING ORGANIZATION

SHOULD BE CONTACTED FOR THE LATEST REVISION.

MAX RECOMMENDED OPERATING

TEMPERATURE:

105° C

VOLTAGE RATING:

600 V MAX

CIRCULAR MIL AREA:

10.54-16.77mm²[20,800-33,100]

THIS DRAWING IS A CONTROLLED DOCUMENT.

DIMENSIONS:

mm [INCHES]

TOLERANCES UNLESS

OTHERWISE SPECIFIED:

0 PLC ± -

1 PLC ± -

2 PLC ± 0.20[.008]

3 PLC ± -

4 PLC ± -

ANGLES ± -

MATERIAL

COPPER PER ASTM B-152

PVC, COLOR: BLUE

FINISH

TIN PLATE

PER ASTM B545

DWN

S.S. GOULDEN

10-11-93

CHK

R. HERSEY

10-11-93

APVD

B. BARE

10-11-93

PRODUCT SPEC

NOT AVAILABLE

APPLICATION SPEC

114-2161

WEIGHT

-

CUSTOMER DRAWING

Tyco

Electronics

Tyco Electronics Corporation

Harrisburg, PA 17105-3608

NAME

TERMINAL, RING TONGUE-BENT 90 DEG

PLASTI-GRIP™

WIRE SIZE: 6 AWG

SIZE

A3

CAGE CODE

00779

DRAWING NO

C-54754

RESTRICTED TO

-

SCALE

4:1

SHEET

1 OF 1

REV

E1

1470-19 (1/08)