



Chipsmall Limited consists of a professional team with an average of over 10 year of expertise in the distribution of electronic components. Based in Hongkong, we have already established firm and mutual-benefit business relationships with customers from,Europe,America and south Asia,supplying obsolete and hard-to-find components to meet their specific needs.

With the principle of "Quality Parts,Customers Priority,Honest Operation,and Considerate Service",our business mainly focus on the distribution of electronic components. Line cards we deal with include Microchip,ALPS,ROHM,Xilinx,Pulse,ON,Everlight and Freescale. Main products comprise IC,Modules,Potentiometer,IC Socket,Relay,Connector.Our parts cover such applications as commercial,industrial, and automotives areas.

We are looking forward to setting up business relationship with you and hope to provide you with the best service and solution. Let us make a better world for our industry!



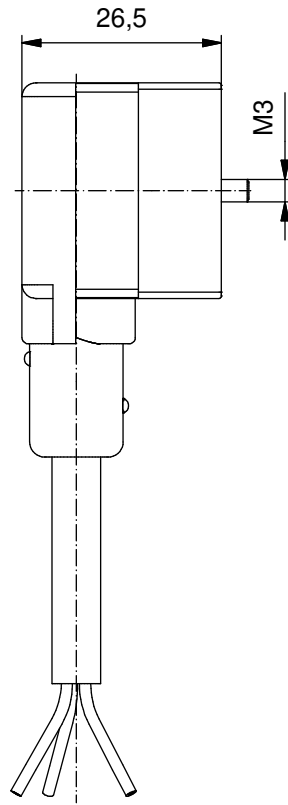
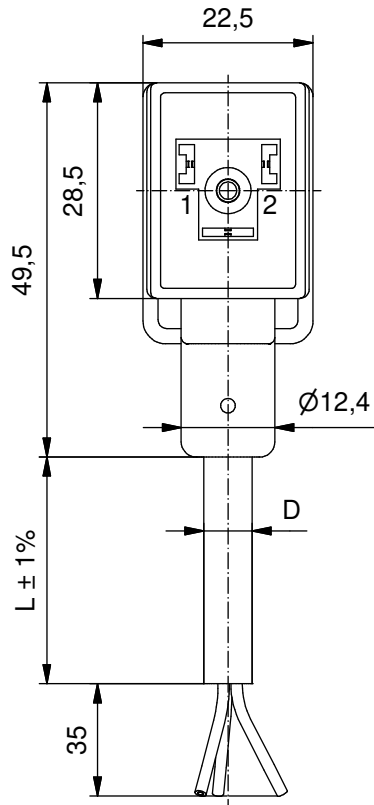
Contact us

Tel: +86-755-8981 8866 Fax: +86-755-8427 6832

Email & Skype: info@chipsmall.com Web: www.chipsmall.com

Address: A1208, Overseas Decoration Building, #122 Zhenhua RD., Futian, Shenzhen, China



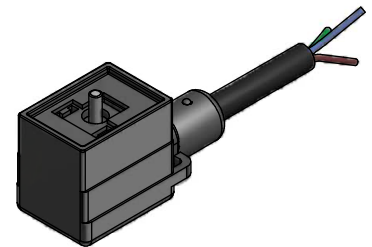


Technische Daten:

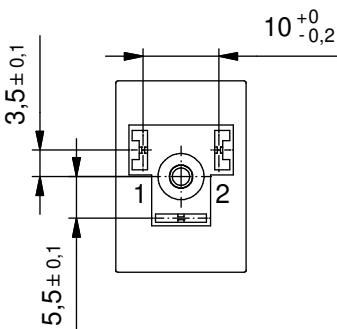
Bemessungsspannung: 230 V AC / DC
 Strombelastbarkeit: 4 A bei 40°C
 EN 60512-5-2 5b
 Verschmutzungsgrad: 3
 IEC 60664-1
 Schutzart: IP 67, im verschraubten Zustand
 IEC 60529
 Umgebungstemperatur: -25°C ... +80°C
 IEC 60664-1
 Steckzyklen: >50
 DIN EN 175301-803

Werkstoffe:

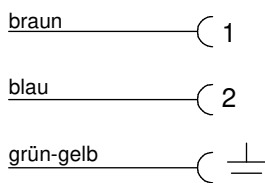
Kontaktmaterial: CuZn
 Kontaktoberfläche: Ni, Sn gal.
 Kontaktträger: PA GF, UL 94
 Griffkörper: TPU, UL 94, schwarz



**Achtung
 Änderung**



Kontaktbelegung:



| Art.-Nr.: | Bezeichnung: | Länge L: | Kabel: |
|-----------|---|----------|---|
| 55-00099 | SAL - B - V2PE - 0 - 0220 - 2 / H2 | 2m | PUR/PVC, schwarz, 3x0,5mm ² , LiYY11Y Kabel: 781-H25300 |
| 55-00002 | SAL - B - V2PE - 0 - 0220 - 3 / H2 | 3m | |
| 55-00003 | SAL - B - V2PE - 0 - 0220 - 5 / H2 | 5m | |
| 55-00100 | SAL - B - V2PE - 0 - 0220 - 10 / H2 | 10m | |
| 55-00101 | SAL - B - V2PE - 0 - 0220 - 2 / A2 | 2m | PVC, schwarz, 3x0,5mm ² , LiYY Kabel: - |
| 55-00102 | SAL - B - V2PE - 0 - 0220 - 3 / A2 | 3m | |
| 55-00103 | SAL - B - V2PE - 0 - 0220 - 5 / A2 | 5m | |
| 55-00104 | SAL - B - V2PE - 0 - 0220 - 10 / A2 | 10m | |
| 55-00111 | SAL - B - V2PE - 0 - 0220 - 2 / K1 / 075 | 2m | TPU, UL 20549, schwarz, 3x0,75mm ² , LiY11Y Kabel: 781-K17300 |
| 55-00112 | SAL - B - V2PE - 0 - 0220 - 3 / K1 / 075 | 3m | |
| 55-00113 | SAL - B - V2PE - 0 - 0220 - 5 / K1 / 075 | 5m | |
| 55-00114 | SAL - B - V2PE - 0 - 0220 - 10 / K1 / 075 | 10m | |
| 55-00115 | SAL - B - V2PE - 0 - 0220 - 2 / A3 / 075 | 2m | PVC, UL 2464, grau, 3x0,75mm ² , LiYY Kabel: 781-A37300 |
| 55-00116 | SAL - B - V2PE - 0 - 0220 - 3 / A3 / 075 | 3m | |
| 55-00117 | SAL - B - V2PE - 0 - 0220 - 5 / A3 / 075 | 5m | |
| 55-00118 | SAL - B - V2PE - 0 - 0220 - 10 / A3 / 075 | 10m | |

D siehe Datenblatt Kabel

| CAD-Unterlage nicht manuell ändern Directive 2002/95/EC RoHS compliant | Index: a 02.02.11 VF Ä3731 Kontaktbelegung überarbeitet, Maß für Kabeldurchmesser entfällt, Datenblatt-Nr. für Kabel in Tabelle hinzu | dim. in mm | Benennung: Ventilstecker Bauform B, ohne Schutzbeschaltung | | | | | | | | | |
|--|--|-------------------------------------|---|--|--|-------|------|------|----------|-------|-------|----------|
| | | | | <table border="1"> <thead> <tr> <th></th> <th>Datum</th> <th>Name</th> </tr> </thead> <tbody> <tr> <td>gez.</td> <td>16.06.08</td> <td>Franz</td> </tr> <tr> <td>gepr.</td> <td>16.06.08</td> <td>Schmidt</td> </tr> </tbody> </table> | | Datum | Name | gez. | 16.06.08 | Franz | gepr. | 16.06.08 |
| | | Datum | Name | | | | | | | | | |
| | gez. | 16.06.08 | Franz | | | | | | | | | |
| gepr. | 16.06.08 | Schmidt | | | | | | | | | | |
| Diese Zeichnung darf ohne unsere ausdrückliche, schriftliche Genehmigung weder vervielfältigt noch dritten Personen ausgehändigt werden. Eigentums- und Urheberrecht vorbehalten | | Artikelnr.: siehe Tabelle | | | | | | | | | | |
| | | | | | | | | | | | | |