



Chipsmall Limited consists of a professional team with an average of over 10 year of expertise in the distribution of electronic components. Based in Hongkong, we have already established firm and mutual-benefit business relationships with customers from,Europe,America and south Asia,supplying obsolete and hard-to-find components to meet their specific needs.

With the principle of “Quality Parts,Customers Priority,Honest Operation,and Considerate Service”,our business mainly focus on the distribution of electronic components. Line cards we deal with include Microchip,ALPS,ROHM,Xilinx,Pulse,ON,Everlight and Freescale. Main products comprise IC,Modules,Potentiometer,IC Socket,Relay,Connector.Our parts cover such applications as commercial,industrial, and automotives areas.

We are looking forward to setting up business relationship with you and hope to provide you with the best service and solution. Let us make a better world for our industry!



Contact us

Tel: +86-755-8981 8866 Fax: +86-755-8427 6832

Email & Skype: info@chipsmall.com Web: www.chipsmall.com

Address: A1208, Overseas Decoration Building, #122 Zhenhua RD., Futian, Shenzhen, China



AC Filter 2-Stage, Broad Band Attenuation



Description

- Line-filter in standard version
- 2 positions
- very high attenuation

Approvals

- VDE Certificate Number: 40004673
- UL File Number: E72928

Characteristics

- Designed for high current applications
- Protection against interference voltage from the mains
Possible interferences generated in the equipment are strongly attenuated
- Especially designed for industrial applications such as: Frequency Converters, Stepper Motor Drives, UPS-Systems, Inverters
- Suitable for use in equipment according to IEC/UL 60950

Other versions on request

- Version with wire connection

References

Alternative: Standard version

Weblinks

[pdf datasheet](#), [html-datasheet](#), [General Product Information](#), [Approvals](#), [CE declaration of conformity](#), [RoHS](#), [CHINA-RoHS](#), [REACH](#), [Distributor-Stock-Check](#), [Detailed request for product](#)

Technical Data

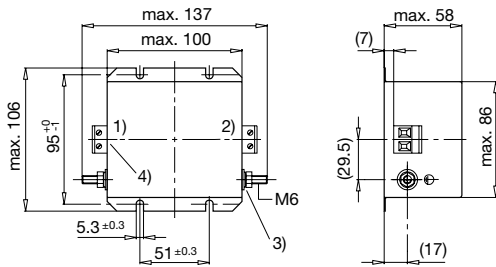
| | |
|---------------------------------|---|
| Ratings IEC | 8 - 25A @ Ta 40 °C / 250VAC; 50Hz |
| Ratings UL/CSA | 8 - 25A @ Ta 40 °C / 125VAC; 60Hz |
| Leakage Current | industrial < 3.5mA (V / 60Hz) |
| Dielectric Strength | > 1.7kVDC between L-N > 2.7kVDC between L/N-PE Test voltage (2 sec) |
| Allowable Operation Temperature | -25 °C to 100 °C |
| Climatic Category | 25/100/21 acc. to IEC 60068-1 |
| Protection Class | Suitable for appliances with protection class I acc. to IEC 61140 |
| Terminal | Screw |
| Material: Housing | Metal |

| | |
|-------------|---|
| Line Filter | Standard and Industrial Version, IEC 60939, UL 1283, CSA C22.2 no. 8 Technical Details |
| MTBF | > 200'000h acc. to MIL-HB-217 F |

Detailed information on product approvals, code requirements, usage instructions and detailed test conditions can be looked up in [General Product Information](#)

Dimension

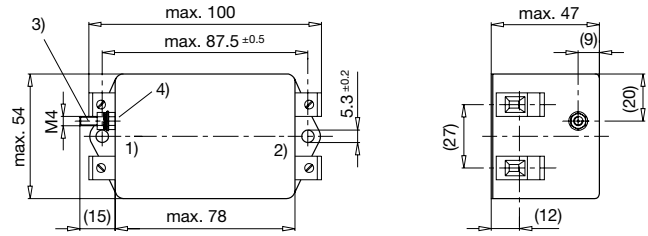
Case 24-2



- 1) Line
- 2) Load
- 3) Nut torque 3...4 Nm
- 4) I/O Connections torque 0.6...0.8

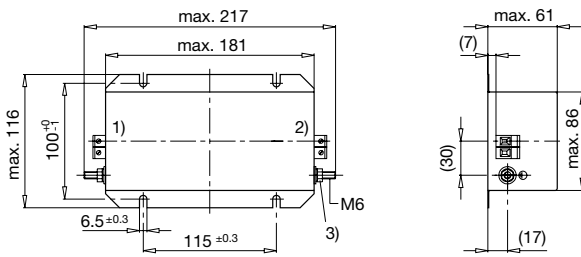
Case 31-2

Case 16-2

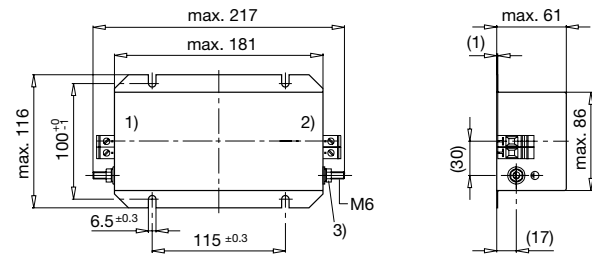


- 1) Line
- 2) Load
- 3) Nut torque 3...4 Nm
- 4) Do not unscrew lock-nut

Case 31-6



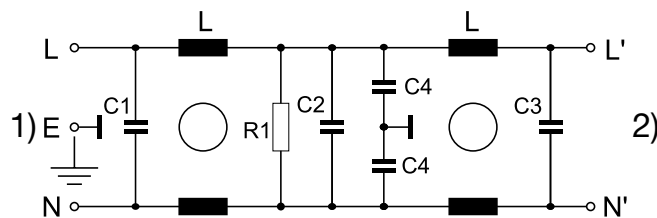
- 1) Line
- 2) Load
- 3) Nut torque 3...4 Nm



- 1) Line
- 2) Load
- 3) Nut torque 3...4 Nm

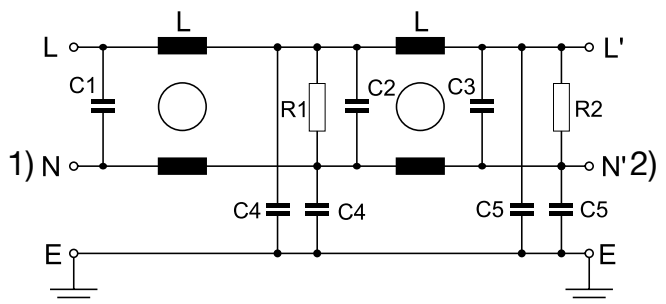
Diagrams

S1 standard version



- 1) Line
- 2) Load

S2 standard version



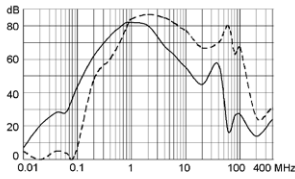
- 1) Line
- 2) Load

Attenuation Loss

----- 50Ω differential mode _____ 50Ω common mode

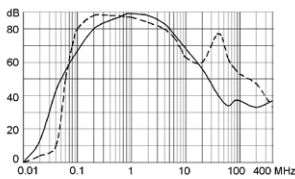
Standard version

8 A

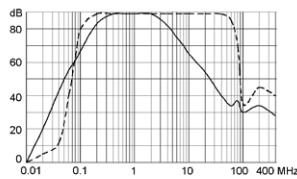


Industrial version

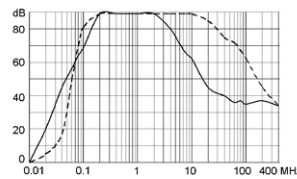
12 A



16 A



25 A



All Variants

| Rated Current [A] | Filter-Type | Leakage Current [mA] | L [mH] | C1 (X2) [μF] | C2 (X2) [μF] | C3 (X2) [μF] | C4 (Y2) [nF] | C5 (Y2) [nF] | R1, R2 [MΩ] | Diagram | Clamps [mm ²] | Weight [g] | Housings | Order Number |
|-------------------|--------------------|----------------------|---------|--------------|--------------|--------------|--------------|--------------|-------------|---------|---------------------------|------------|----------|--------------|
| 8 | Standard Version | 0.25 | 2 x 7 | 0.1 | 0.15 | 0.47 | 2.2 | - | 1 | S1 | 4 | 410 g | 16-2 | 5500.2068 |
| 12 | Industrial Version | 3.5 | 2 x 5 | 2.2 | 2.2 | 2.2 | 33 | 2.2 | 0.5 | S2 | 4 | 1000 g | 24-2 | 5500.2069 |
| 16 | Industrial Version | 3.5 | 2 x 3.5 | 2.2 | 2.2 | 2.2 | 33 | 2.2 | 0.5 | S2 | 4 | 2400 g | 31-2 | 5500.2070 |
| 25 | Industrial Version | 3.5 | 2 x 3.5 | 2.2 | 2.2 | 2.2 | 33 | 2.2 | 0.5 | S2 | 6 | 2500 g | 31-6 | 5500.2071 |

Most Popular.

Availability for all products can be searched real-time: <http://www.schurter.com/en/Stock-Check/Stock-Check-SCHURTER>

Packaging unit 5 Pcs