



Chipsmall Limited consists of a professional team with an average of over 10 year of expertise in the distribution of electronic components. Based in Hongkong, we have already established firm and mutual-benefit business relationships with customers from,Europe,America and south Asia,supplying obsolete and hard-to-find components to meet their specific needs.

With the principle of “Quality Parts,Customers Priority,Honest Operation,and Considerate Service”,our business mainly focus on the distribution of electronic components. Line cards we deal with include Microchip,ALPS,ROHM,Xilinx,Pulse,ON,Everlight and Freescale. Main products comprise IC,Modules,Potentiometer,IC Socket,Relay,Connector.Our parts cover such applications as commercial,industrial, and automotives areas.

We are looking forward to setting up business relationship with you and hope to provide you with the best service and solution. Let us make a better world for our industry!



## Contact us

Tel: +86-755-8981 8866 Fax: +86-755-8427 6832

Email & Skype: info@chipsmall.com Web: www.chipsmall.com

Address: A1208, Overseas Decoration Building, #122 Zhenhua RD., Futian, Shenzhen, China

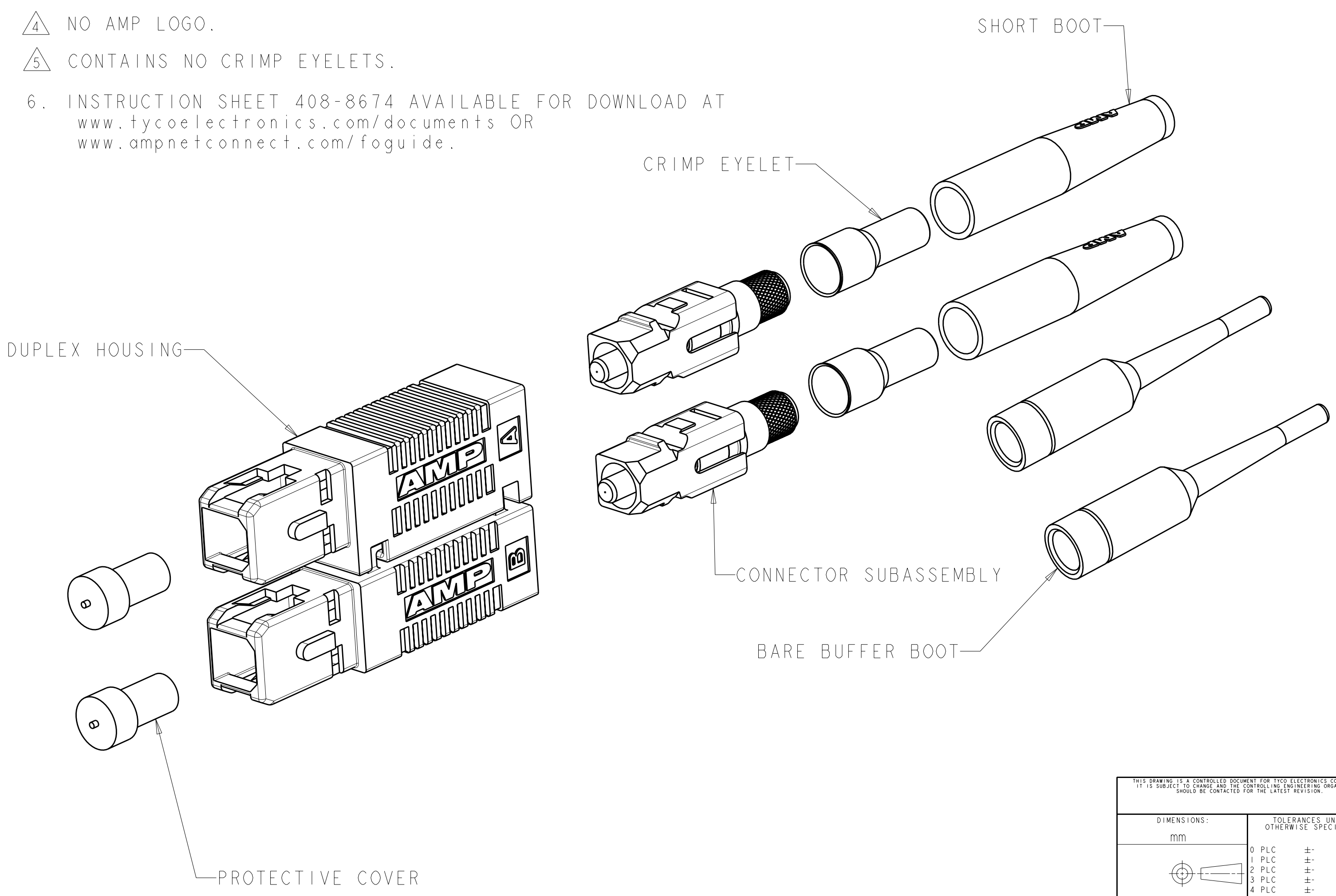
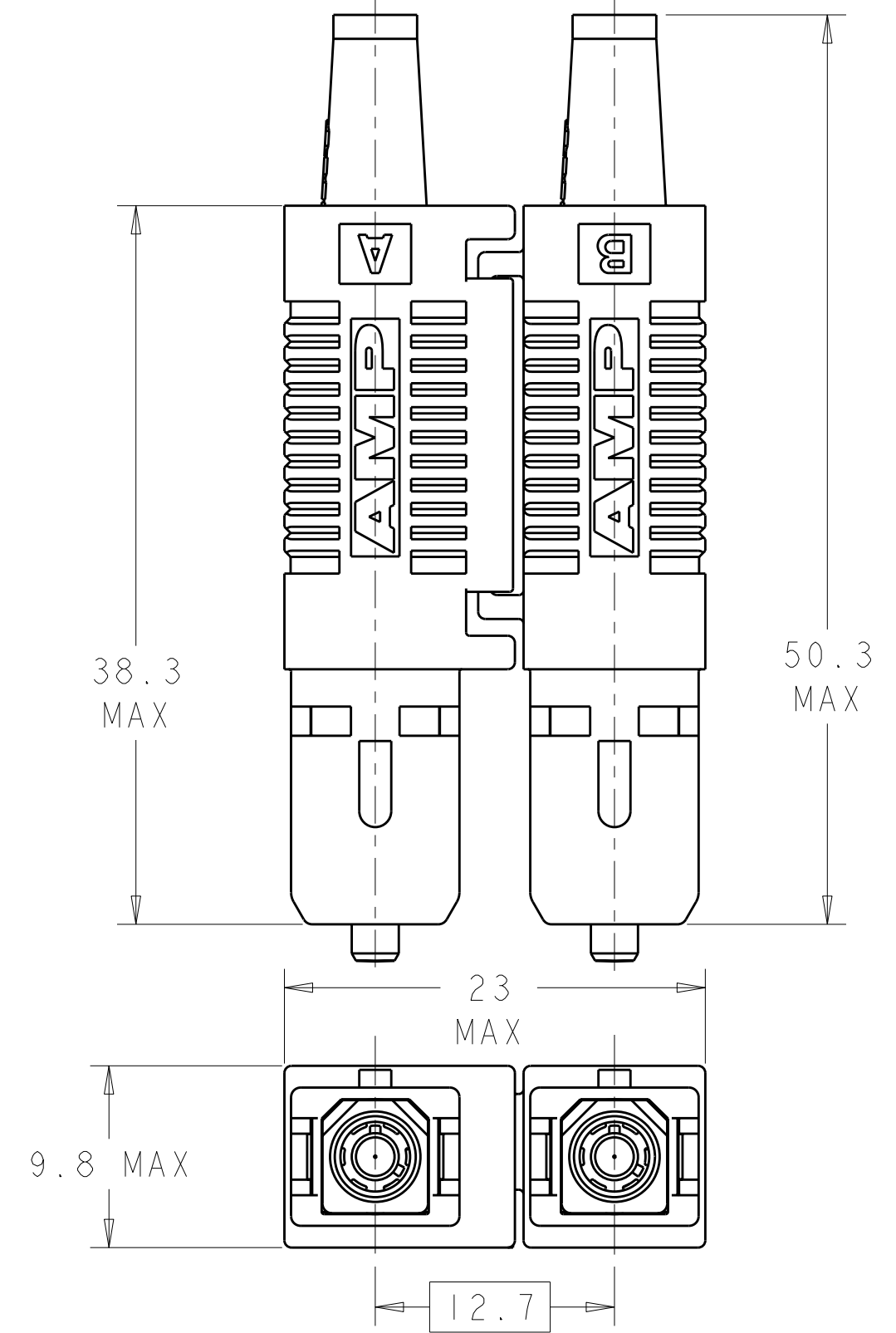


THIS DRAWING IS UNPUBLISHED. RELEASED FOR PUBLICATION 20  
 © COPYRIGHT 20 BY TYCO ELECTRONICS CORPORATION. ALL RIGHTS RESERVED.

LOC	DIST	REVISIONS			
P	LTR	DESCRIPTION	DATE	DWN	APVD
CE	00	A	RELEASE TO ACTIVE	07JUN2006	BB SM
		B	REVISE PER ECR-07-011930	06JUN2007	BB SM
		BI	ADD NOTE 6.	11MAY2009	KG SB

- 1 MATERIAL:  
 CONNECTOR HOUSING: PBT-GF17, COLOR: BEIGE.\*  
 PROTECTIVE COVER: LDPE, COLOR: BLACK, NON-FR.  
 CONNECTOR SUBASSEMBLY:  
 PLUG BODY: PES-GF20, COLOR: BLUE.\*  
 FERRULE ASSEMBLY: CERAMIC/PBT-GF17, COLOR: BEIGE.\*  
 EPOXY FILL TUBING: PTFE, COLOR: CLEAR, UL VW-1 RATED.  
 SPRING: STAINLESS STEEL.  
 RETAINER BODY: PES-GF20, COLOR: BEIGE.\*  
 CRIMP EYELET: TIN PLATED COPPER.  
 BOOT: TPE, COLOR: SEE TABLE.\*  
 \*UL94 V-0 RATED AT QUALIFYING THICKNESS.

- 2 BULK PACKAGE.  
 3. 3.0mm KIT FOR USE WITH "LOOSE-JACKETED" CABLE.  
 4 NO AMP LOGO.  
 5 CONTAINS NO CRIMP EYELETS.  
 6. INSTRUCTION SHEET 408-8674 AVAILABLE FOR DOWNLOAD AT  
[www.tycoelectronics.com/documents](http://www.tycoelectronics.com/documents) OR  
[www.ampnetconnect.com/foguide](http://www.ampnetconnect.com/foguide).



3.0mm, BLACK	5504657-9
3.0mm, AQUA	5504657-8
NONE	5504657-7
NONE	5504657-6
3.0mm & 900um, BEIGE	5504657-5
3.0mm, BEIGE	5504657-4
NONE	5504657-3
3.0mm, BEIGE	5504657-2
3.0mm, BEIGE	5504657-1
BOOT	PART NUMBER

THIS DRAWING IS A CONTROLLED DOCUMENT FOR TYCO ELECTRONICS CORPORATION. IT IS SUBJECT TO CHANGE AND THE CONTROLLING ENGINEERING ORGANIZATION SHOULD BE CONTACTED FOR THE LATEST REVISION.

DWN	B. BRIGGS	14JUL2005	Tyco Electronics Harrisburg, PA 17105-3608			
CHK	S. MILLER	14JUL2005				
APVD	S. BUCHTER	14JUL2005				
PRODUCT SPEC						
APPLICATION SPEC			NAME	AMP SC, MULTIMODE CONNECTOR KIT, 900um AND 3.0mm		
WEIGHT			SIZE	CAGE CODE	DRAWING NO	RESTRICTED TO
			A2	00779	C-5504657	
CUSTOMER DRAWING			SCALE	3:1	SHEET	OF
						REV
						BI