



Chipsmall Limited consists of a professional team with an average of over 10 year of expertise in the distribution of electronic components. Based in Hongkong, we have already established firm and mutual-benefit business relationships with customers from,Europe,America and south Asia,supplying obsolete and hard-to-find components to meet their specific needs.

With the principle of “Quality Parts,Customers Priority,Honest Operation,and Considerate Service”,our business mainly focus on the distribution of electronic components. Line cards we deal with include Microchip,ALPS,ROHM,Xilinx,Pulse,ON,Everlight and Freescale. Main products comprise IC,Modules,Potentiometer,IC Socket,Relay,Connector.Our parts cover such applications as commercial,industrial, and automotives areas.

We are looking forward to setting up business relationship with you and hope to provide you with the best service and solution. Let us make a better world for our industry!



## Contact us

Tel: +86-755-8981 8866 Fax: +86-755-8427 6832

Email & Skype: info@chipsmall.com Web: www.chipsmall.com

Address: A1208, Overseas Decoration Building, #122 Zhenhua RD., Futian, Shenzhen, China



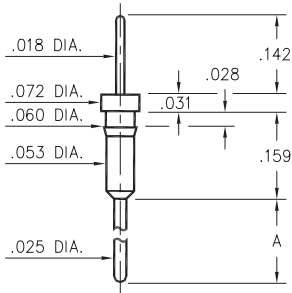
# MALE PCB PINS

## PRINTED CIRCUIT PINS

### 3409

3409-X-00-XX-00-00-03-0

Press-fit in .057 mounting hole

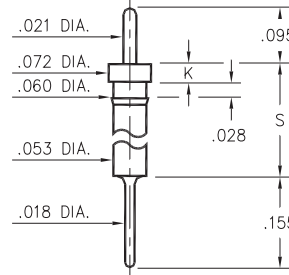


Basic Part Number	Pin Length A
3409-1	.210
3409-2	.420

### 0315

0315-0-00-XX-00-00-03-0

Press-fit in .057 mounting hole  
Pin material is Phosphor Bronze 544 (B2)

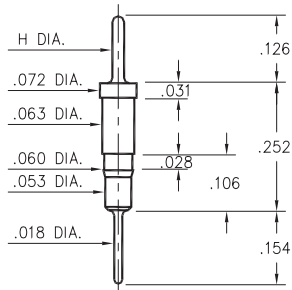


Basic Part Number	Head Height K	Standoff Height S
0315-0	.030	.190
0315-1	.040	.430

### 5503/5509

550X-X-00-XX-00-00-03-0

Press-fit in .057 mounting hole

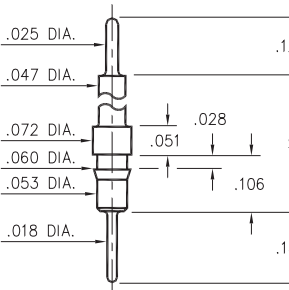


Basic Part Number	Pin Diameter H
5503-0	.025
5509-0	.018

### 5504/5505

550X-0-00-XX-00-00-03-0

Press-fit in .057 mounting hole

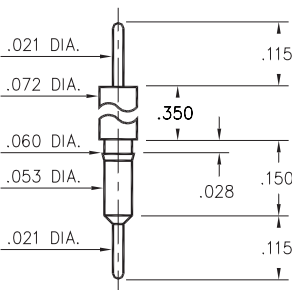


Basic Part Number	Standoff Height S
5504-0	.331
5505-0	.606

### 3406

3406-0-00-XX-00-00-03-0

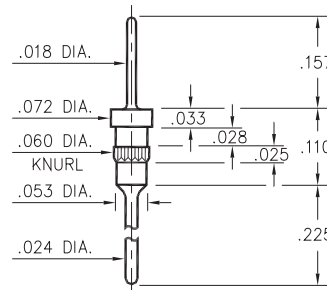
Press-fit in .057 mounting hole



### 5011

5011-0-00-XX-00-00-03-0

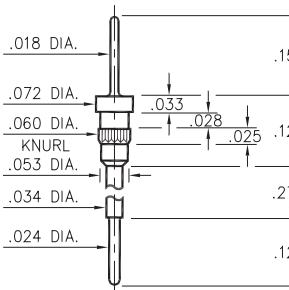
Press-fit in .057 mounting hole



### 5113

5113-0-00-XX-00-00-03-0

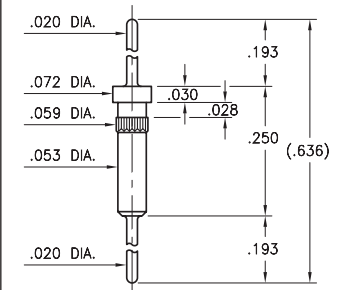
Press-fit in .057 mounting hole



### 3900

3900-0-00-15-00-00-03-0

Press-fit in .057 mounting hole



#### SPECIFICATIONS:

**Pin Material:** Brass Alloy 360, 1/2 Hard  
(Except where noted)

**Dimensions:** Inches

**Tolerances On:** Lengths: ±.005  
Diameters: ±.002  
Angles: ±2°



ORDER CODE: XXXX - X - 00 - XX - 00 - 00 - 03 - 0

BASIC PART #

SPECIFY PIN FINISH:

- 01 200 μ" TIN/LEAD OVER NICKEL
- ◆ 80 200 μ" TIN OVER NICKEL (RoHS)
- ◆ 15 10 μ" GOLD OVER NICKEL (RoHS)
- ◆ 21 20 μ" GOLD OVER NICKEL (RoHS)
- ◆ 34 50 μ" GOLD OVER NICKEL (RoHS)

