



Chipsmall Limited consists of a professional team with an average of over 10 year of expertise in the distribution of electronic components. Based in Hongkong, we have already established firm and mutual-benefit business relationships with customers from,Europe,America and south Asia,supplying obsolete and hard-to-find components to meet their specific needs.

With the principle of “Quality Parts,Customers Priority,Honest Operation,and Considerate Service”,our business mainly focus on the distribution of electronic components. Line cards we deal with include Microchip,ALPS,ROHM,Xilinx,Pulse,ON,Everlight and Freescale. Main products comprise IC,Modules,Potentiometer,IC Socket,Relay,Connector.Our parts cover such applications as commercial,industrial, and automotives areas.

We are looking forward to setting up business relationship with you and hope to provide you with the best service and solution. Let us make a better world for our industry!



## Contact us

Tel: +86-755-8981 8866 Fax: +86-755-8427 6832

Email & Skype: info@chipsmall.com Web: www.chipsmall.com

Address: A1208, Overseas Decoration Building, #122 Zhenhua RD., Futian, Shenzhen, China



DIALIGHT PART NUMBER	LED COLOR	DIM "A"	DIM "B"	DIM "C"	DIM "D"	DIM "E"	OPERATING CHARACTERISTICS AT 25°C AMBIENT											
							LUMINOUS INTENSITY TEST CONDITION			FORWARD VOLTAGE / CURRENT TEST COND		FORWARD VOLTAGE (V)		FORWARD CURRENT (mA)		REVERSE CURRENT (mA)	PEAK WAVELENGTH (nm)	VIEWING ANGLE (DEG)
							MIN	TYP	MAX	TYP	MAX	TYP	MAX	TYP	MAX	MAX	TYP	TYP
551-0207-804F	GREEN TINTED DIFFUSED	.095	.118±.010	.115	.016 x .018	.040	If = 10mA	5.6	12.6	29	If = 10mA	2.1	2.6	—	—	100	565	60
551-0207-815F	GREEN TINTED DIFFUSED	.095	.118±.010	.110	.016 x .018	.040	If = 10mA	5.6	12.6	29	If = 10mA	2.1	2.6	—	—	100	565	60
551-0207-818F	GREEN TINTED DIFFUSED	.095	.118±.010	.177	.016 x .018	.040	If = 10mA	5.6	12.6	29	If = 10mA	2.1	2.6	—	—	100	565	60
551-0307-803F	YELLOW TINTED DIFFUSED	.095	.118±.010	.115	.016 x .018	.040	If = 10mA	3.7	8.7	30	If = 10mA	2.1	2.6	—	—	100	585	60
551-0307-807F	AlInGaP YELLOW WATER CLEAR	.095	.115±.010	UNTRIMMED	.018 SQ.	.040	If = 20mA	3.5	200	—	If = 20mA	1.9	2.4	—	—	100	592	45
551-0307-809F	YELLOW TINTED DIFFUSED	.095	.118±.010	.110	.016 x .018	.040	If = 10mA	3.7	8.7	30	If = 10mA	2.1	2.6	—	—	100	585	60
551-0307-812F	YELLOW TINTED DIFFUSED	.095	.118±.010	.210	.016 x .018	.040	If = 10mA	3.7	8.7	30	If = 10mA	2.1	2.6	—	—	100	585	60
551-0407-803F	RED TINTED DIFFUSED	.095	.118±.010	.115	.016 x .018	.040	If = 10mA	2.5	8.7	18	If = 10mA	2.0	2.6	—	—	100	635	60
551-0407-818F	RED TINTED DIFFUSED	.095	.118±.010	.110	.016 x .018	.040	If = 10mA	2.5	8.7	18	If = 10mA	2.0	2.6	—	—	100	635	60
551-0507-801F	RED TINTED DIFFUSED; 5V INT RES	.095	.118±.010	.115	.018 x .016	.040	Vf = 5V	8.7	29	—	Vf = 5V	—	—	10	20	100	635	60
551-0507-806F	RED TINTED DIFFUSED; 5V INT RES	.095	.118±.010	.110	.018 x .016	.040	Vf = 5V	8.7	29	—	Vf = 5V	—	—	10	20	100	635	60
551-0607-801F	GREEN TINTED DIFFUSED; 5V INT RES	.095	.118±.010	.110	.018 x .016	.040	Vf = 5V	5.6	19	—	Vf = 5V	—	—	10	20	100	565	60
* 551-1107-801F	RED TINTED DIFFUSED; 2mA LC	.095	.118±.010	.145	.018 x .016	.040	If = 2mA	1.0	1.6	—	If = 2mA	1.7	2.2	—	—	10	635	60
551-1107-811F	RED TINTED DIFFUSED; 2mA LC	.095	.118±.010	.110	.018 x .016	.040	If = 2mA	1.0	1.6	—	If = 2mA	1.7	2.2	—	—	10	635	60
* 551-1207-801F	YELLOW TINTED DIFFUSED; 2mA LC	.095	.118±.010	.145	.018 x .016	.040	If = 2mA	1.0	1.6	—	If = 2mA	1.8	2.7	—	—	10	585	60
551-1207-809F	YELLOW TINTED DIFFUSED; 2mA LC	.095	.118±.010	.110	.018 x .016	.040	If = 2mA	1.0	1.6	—	If = 2mA	1.8	2.7	—	—	10	585	60
* 551-1307-801F	GREEN TINTED DIFFUSED; 2mA LC	.095	.118±.010	.145	.018 x .016	.040	If = 2mA	1.0	1.6	—	If = 2mA	1.9	2.2	—	—	10	565	60
551-1307-811F	GREEN TINTED DIFFUSED; 2mA LC	.095	.118±.010	.110	.018 x .016	.040	If = 2mA	1.0	1.6	—	If = 2mA	1.9	2.2	—	—	10	565	60
551-1307-812F	GREEN TINTED DIFFUSED; 2mA LC	.095	.115±.010	.145	.018 SQ.	.040	If = 2mA	1.0	2.1	—	If = 2mA	1.8	2.2	—	—	50	565	50
551-3007-803F	R/G BI-COLOR, WHITE DIFFUSED	.095	.118±.010	.110	.020 SQ.	.043	If = 10mA	2.5	4.7	—	If = 20mA	2.0	2.8	—	—	100	635	60
								3.7	10	—		2.1	2.8	—	—	100	565	60
551-4207-803F	InGaN GREEN WATER CLEAR	.101	.110±.005	.145	.020 SQ.	.043	If = 10mA	280	480	710	If = 10mA	3.0	3.7	—	—	10	523	30

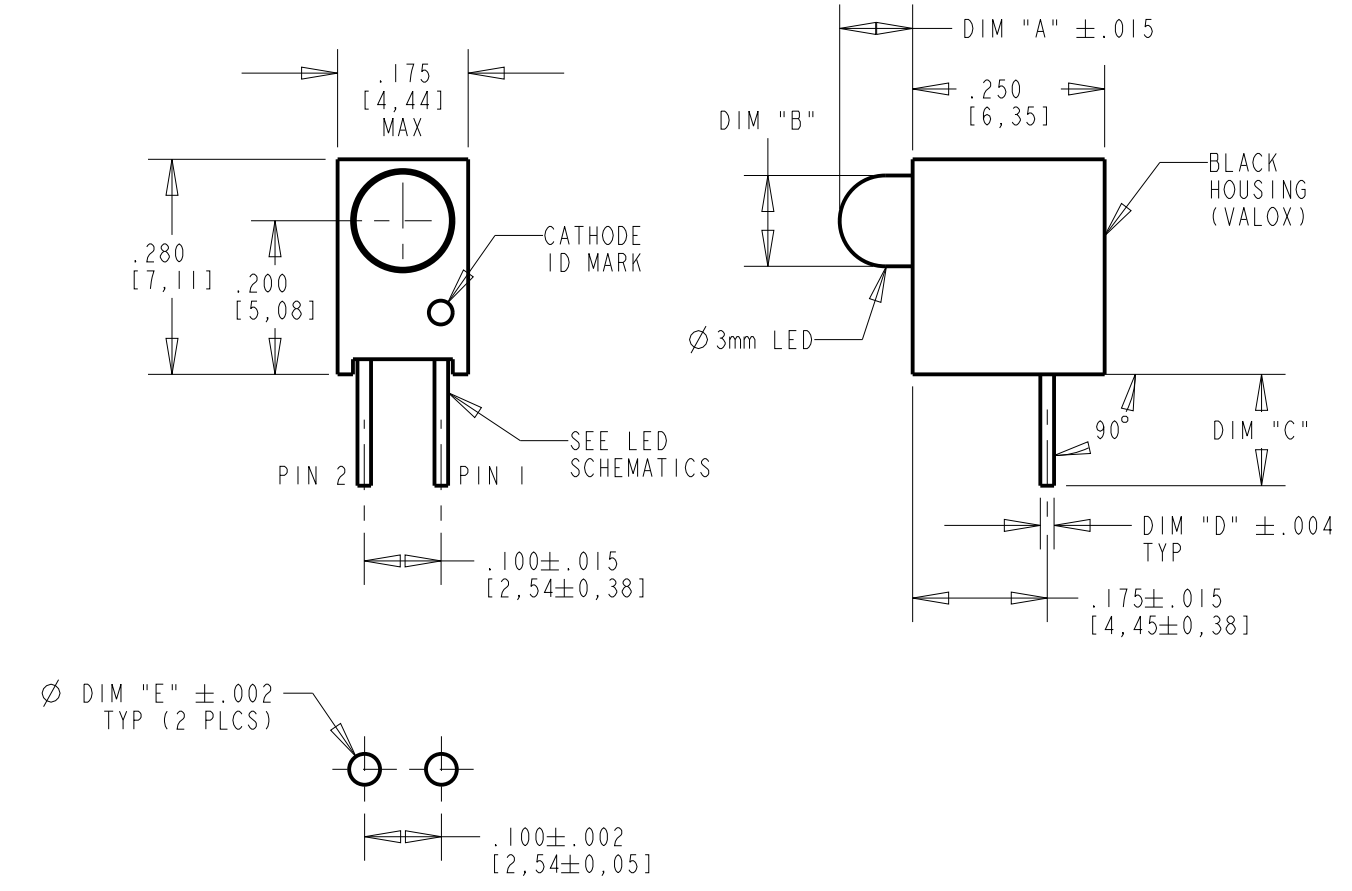
REV	ECN NO	REVISIONS	DRN	CKD	APP	DATE
A	—	NEW RELEASE	KLJ	—	—	—
B	—	UPDATED DIM A,B, D & E FOR P/N'S 551-0207/0307/0407-8XXF. ALSO UPDATED LED SPECS	BP	—	NO	8-22-16

**RoHS COMPLIANT 551-XX07-8XXF**

Part Numbers with the "F" suffix ending are RoHS Compliant. For example: 551-0207-818F. Packaging is marked with "RoHS Compliant" label or equivalent markings. Parts can be wave soldered, dip soldered or hand soldered using typical lead-free soldering process with max 260°C temp. for 5 sec.

DIALIGHT PART NUMBER	ABSOLUTE MAXIMUM RATINGS AT 25°C AMBIENT								
	POWER DISSIPATION (mW)	CONT. FWD CURRENT (mA)	DC FORWARD VOLTAGE (V)	PEAK FWD CURRENT (mA)	LINEAR DERATION	REVERSE VOLTAGE (V)	SOLDERING TEMPERATURE FOR 5 SEC.	OPERATING TEMPERATURE	STORAGE TEMPERATURE
551-0207-804F	120	30	—	90	0.4 mA/°C FROM 50°C	5	260 °C	-55°C /+100°C	-55°C /+100°C
551-0207-815F	120	30	—	90	0.4 mA/°C FROM 50°C	5	260 °C	-55°C /+100°C	-55°C /+100°C
551-0207-818F	120	30	—	90	0.4 mA/°C FROM 50°C	5	260 °C	-55°C /+100°C	-55°C /+100°C
551-0307-803F	60	20	—	60	0.25 mA/°C FROM 50°C	5	260 °C	-55°C /+100°C	-55°C /+100°C
551-0307-807F	103	50	—	500	0.84 mA/°C FROM 50°C	5	260 °C	-40°C /+100°C	-40°C /+100°C
551-0307-809F	60	20	—	60	0.25 mA/°C FROM 50°C	5	260 °C	-55°C /+100°C	-55°C /+100°C
551-0307-812F	60	20	—	60	0.25 mA/°C FROM 50°C	5	260 °C	-55°C /+100°C	-55°C /+100°C
551-0407-803F	100	30	—	90	0.4 mA/°C FROM 50°C	5	260 °C	-55°C /+100°C	-55°C /+100°C
551-0407-818F	100	30	—	90	0.4 mA/°C FROM 50°C	5	260 °C	-55°C /+100°C	-55°C /+100°C
551-0507-801F	—	—	7.5	—	0.086 V/°C FROM 50°C	5	260 °C	-40°C /+85°C	-55°C /+100°C
551-0507-806F	—	—	7.5	—	0.086 V/°C FROM 50°C	5	260 °C	-40°C /+85°C	-55°C /+100°C
551-0607-801F	—	—	7.5	—	0.086 V/°C FROM 50°C	5	260 °C	-40°C /+85°C	-55°C /+100°C
* 551-1107-801F	20	7	—	500	0.7 mA/°C FROM 90°C	5	260 °C	-55°C /+100°C	-55°C /+100°C
551-1107-811F	20	7	—	500	0.7 mA/°C FROM 90°C	5	260 °C	-55°C /+100°C	-55°C /+100°C
* 551-1207-801F	20	7	—	500	0.7 mA/°C FROM 90°C	5	260 °C	-55°C /+100°C	-55°C /+100°C
551-1207-809F	20	7	—	500	0.7 mA/°C FROM 90°C	5	260 °C	-55°C /+100°C	-55°C /+100°C
* 551-1307-801F	20	7	—	500	0.7 mA/°C FROM 90°C	5	260 °C	-55°C /+100°C	-55°C /+100°C
551-1307-811F	20	7	—	500	0.7 mA/°C FROM 90°C	5	260 °C	-55°C /+100°C	-55°C /+100°C
551-1307-812F	24	7	—	500	1.0 mA/°C FROM 92°C	5	260 °C	-20°C /+100°C	-40°C /+100°C
551-3007-803F	100	30	—	120	0.4 mA/°C FROM 50°C	5	260 °C	-55°C /+100°C	-55°C /+100°C
551-4207-803F	80	20	—	250	0.57 mA/°C FROM 65°C	5	260 °C	-55°C /+100°C	-55°C /+100°C

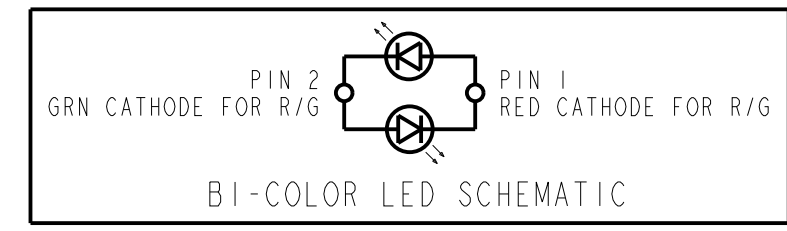
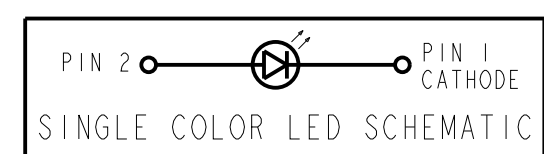
\* PACKAGE 100 PCS/TUBE WITH TWO [2] END PLUGS FOR THESE P/N'S ONLY



**RECOMMENDED P.C.B. HOLE PATTERN**

**NOTES:**

- LED LEAD DIMENSIONS SHOWN ARE MEASURED AT HOUSING EXIT.
- LEADS TO FIT INTO HOLES SPACED AS PER PATTERN.
- PIN NUMBERS FOR REFERENCE ONLY, DESIGNATION NON-EXISTENT ON PART.
- DIALIGHT PART NUMBERS: 551-XX07-8XXF.
- THIS ASSEMBLY CONTAINS ELECTROSTATIC DISCHARGE SENSITIVE DEVICES (ESDS). MAINTAIN ALL PRECAUTIONARY MEASURES DURING ASSEMBLY, HANDLING, AND STORAGE IN ACCORDANCE WITH IPC-A-610.



**ATTENTION:**  
OBSERVE PRECAUTIONS FOR HANDLING ELECTROSTATIC SENSITIVE DEVICES

THIS DRAWING AND THE CONTENTS HEREIN ARE CONFIDENTIAL AND THE SOLE PROPERTY OF DIALIGHT. REPRODUCTION OF THIS DRAWING OR CONSTRUCTION OF ANY PARTS WITHIN THIS DRAWING ARE FORBIDDEN WITHOUT THE WRITTEN CONSENT OF DIALIGHT.		
SCALE: DRAWING SCALE	DRAWING NUMBER	REV
ALL DIM'S IN: INCHES (MM)	C-17721	B
TOLERANCES: UNLESS OTHERWISE SPECIFIED	TITLE 3mm LED CBI .200" HIGH $\phi$ RoHS COMPLIANT	
FRACTIONS: $\pm 1/64$	MATERIAL	
DECIMALS (.XX): $\pm .02$	Dialight	
DECIMALS (.XXX): $\pm .010$	1501 ROUTE 34 SOUTH FARMINGDALE, NJ 07727	
ANGLES: $\pm 3^\circ$	FSCM 83330	
FINISH:	SHEET 1 OF 1 FAMILY TABLE:	