



Chipsmall Limited consists of a professional team with an average of over 10 year of expertise in the distribution of electronic components. Based in Hongkong, we have already established firm and mutual-benefit business relationships with customers from,Europe,America and south Asia,supplying obsolete and hard-to-find components to meet their specific needs.

With the principle of “Quality Parts,Customers Priority,Honest Operation,and Considerate Service”,our business mainly focus on the distribution of electronic components. Line cards we deal with include Microchip,ALPS,ROHM,Xilinx,Pulse,ON,Everlight and Freescale. Main products comprise IC,Modules,Potentiometer,IC Socket,Relay,Connector.Our parts cover such applications as commercial,industrial, and automotives areas.

We are looking forward to setting up business relationship with you and hope to provide you with the best service and solution. Let us make a better world for our industry!



Contact us

Tel: +86-755-8981 8866 Fax: +86-755-8427 6832

Email & Skype: info@chipsmall.com Web: www.chipsmall.com

Address: A1208, Overseas Decoration Building, #122 Zhenhua RD., Futian, Shenzhen, China

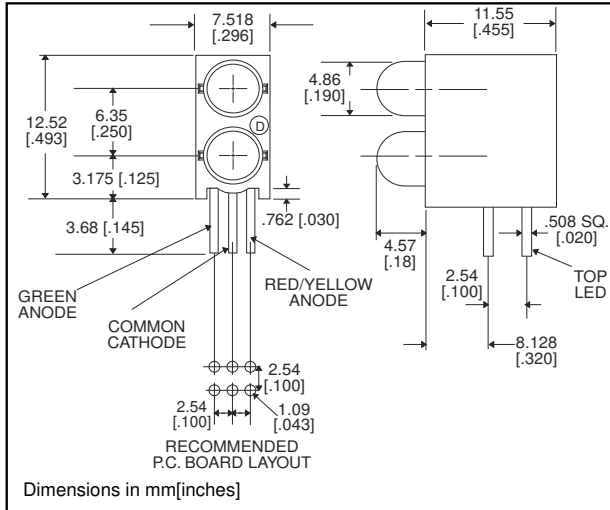


5mm

LED CBI® Circuit Board Indicator
3 Leaded, Bi-Color, Bi-Level



552-35xx



PART NO.

552-3511
 552-3544

COLOR*

Red/Green
 Yellow/Green

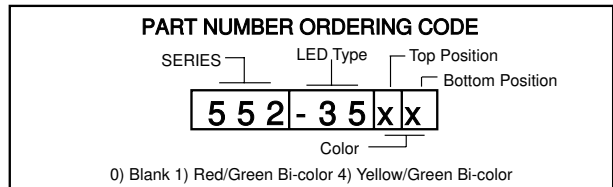
* Top-Bottom LED

Features

- Common Cathode simplifies design, and the red/green LED provides yellow-orange as a third color
- Multiple CBIs form horizontal LED arrays on 7.62mm (0.300") center-lines.
- High Contrast, UL 94 V-0 rated, black housing
- Oxygen index: 32%
- Polymer content: PBT, 1.055 g
- Housing stand-offs facilitate PCB cleaning
- Solderability per MIL-STD-202F, method 208F
- LEDs are safe for direct viewing per IEC 825-1, EN-60825-1

Tolerance note: As noted, otherwise:

- LED Protrusion: ±0.04 mm [±0.016]
- CBI Housing: ±0.02mm[±0.008]



Typical Operating Characteristics (T_A=25°C)

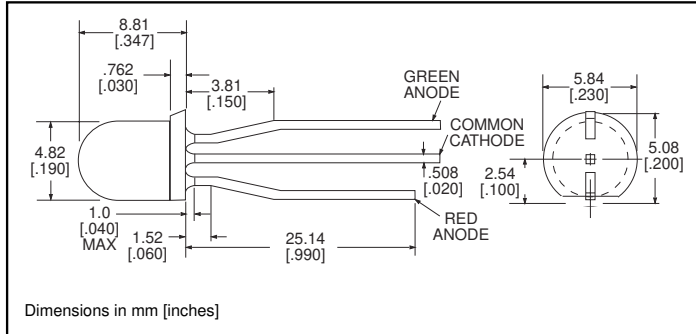
See LED data sheet for additional information
See page 6-55 and 6-56 for Reference Only LED Drive Circuit Examples. See page 6-57 for Pin Out

Part Number	Color	Peak Wavelength nm	I _v mcd	V _F Volts	Test Current (mA)	Viewing Angle 2θ _{1/2}	LED Data sheet	Page #
552-3511	Red/Green	635/565	5/8	2.1/2.3	10	65°	521-9450	6-45
552-3544	Yellow/Green	583/565	5/8	2.1/2.1	10	65°	521-9460	6-45

**5mm Discrete LED
Bi-Color
3 Ledged, Non-Tinted, Diffused**



521-9450, -9460



PART NO.	LED COLOR
521-9450	Red/Green
521-9460	Yellow/Green NEW

MOUNTING CLIP: 515-0004
located on page 6-48

ABSOLUTE MAXIMUM RATINGS ($T_A=25^\circ\text{C}$)

	Red/Green -9450	Yellow/Green -9460
Power Dissipation (mW)	135/135	135/135
Forward Current (mA)	25/25	25/25
Derating (mA/°C) From 50°C 1. From 40°C	.5/.5	.5/.5
Peak Current (mA) Pulse width = 10 μs	90/90	90/90
Operating Temperature (°C)	-20/+85	-20/+85
Storage Temperature (°C)	-55/+100	-55/+100
Soldering Temperature	260°C, 5 seconds, 1.6 mm from case	

Solder Adherence per MIL-STD-202E, Method 208C

OPERATING CHARACTERISTICS ($T_A=25^\circ\text{C}$)

		Red/Green -9450	Yellow/Green -9460
Luminous Intensity (mcd)	Min.	2.1/4.2	2.1/4.2
$I_F=10\text{mA}$	Typical	5/8	5/8
Peak Wavelength (nm)	Typical	635/565	583/565
λ_{Peak}			
Viewing Angle ($2\theta^{1/2}$)	Typical	65°	65°
Forward Voltage (V)	Typical	2.1/2.3	2.1/2.1
$I_F=10\text{mA}$	Max.	2.5/2.7	2.5/2.5

$\theta^{1/2}$ is the off axis angle at which the luminous intensity is half the axial luminous intensity

6