



Chipsmall Limited consists of a professional team with an average of over 10 year of expertise in the distribution of electronic components. Based in Hongkong, we have already established firm and mutual-benefit business relationships with customers from,Europe,America and south Asia,supplying obsolete and hard-to-find components to meet their specific needs.

With the principle of “Quality Parts,Customers Priority,Honest Operation,and Considerate Service”,our business mainly focus on the distribution of electronic components. Line cards we deal with include Microchip,ALPS,ROHM,Xilinx,Pulse,ON,Everlight and Freescale. Main products comprise IC,Modules,Potentiometer,IC Socket,Relay,Connector.Our parts cover such applications as commercial,industrial, and automotives areas.

We are looking forward to setting up business relationship with you and hope to provide you with the best service and solution. Let us make a better world for our industry!



Contact us

Tel: +86-755-8981 8866 Fax: +86-755-8427 6832

Email & Skype: info@chipsmall.com Web: www.chipsmall.com

Address: A1208, Overseas Decoration Building, #122 Zhenhua RD., Futian, Shenzhen, China



DRAWING MADE IN THIRD ANGLE PROJECTION
 THIS DRAWING IS UNPUBLISHED. RELEASED FOR PUBLICATION MARCH 17, 1983.
 © COPYRIGHT 1975 BY AMP INCORPORATED, HARRISBURG, PA. ALL INTERNATIONAL RIGHTS RESERVED. AMP PRODUCTS MAY BE COVERED BY U.S. AND FOREIGN PATENTS AND/OR PATENTS PENDING.

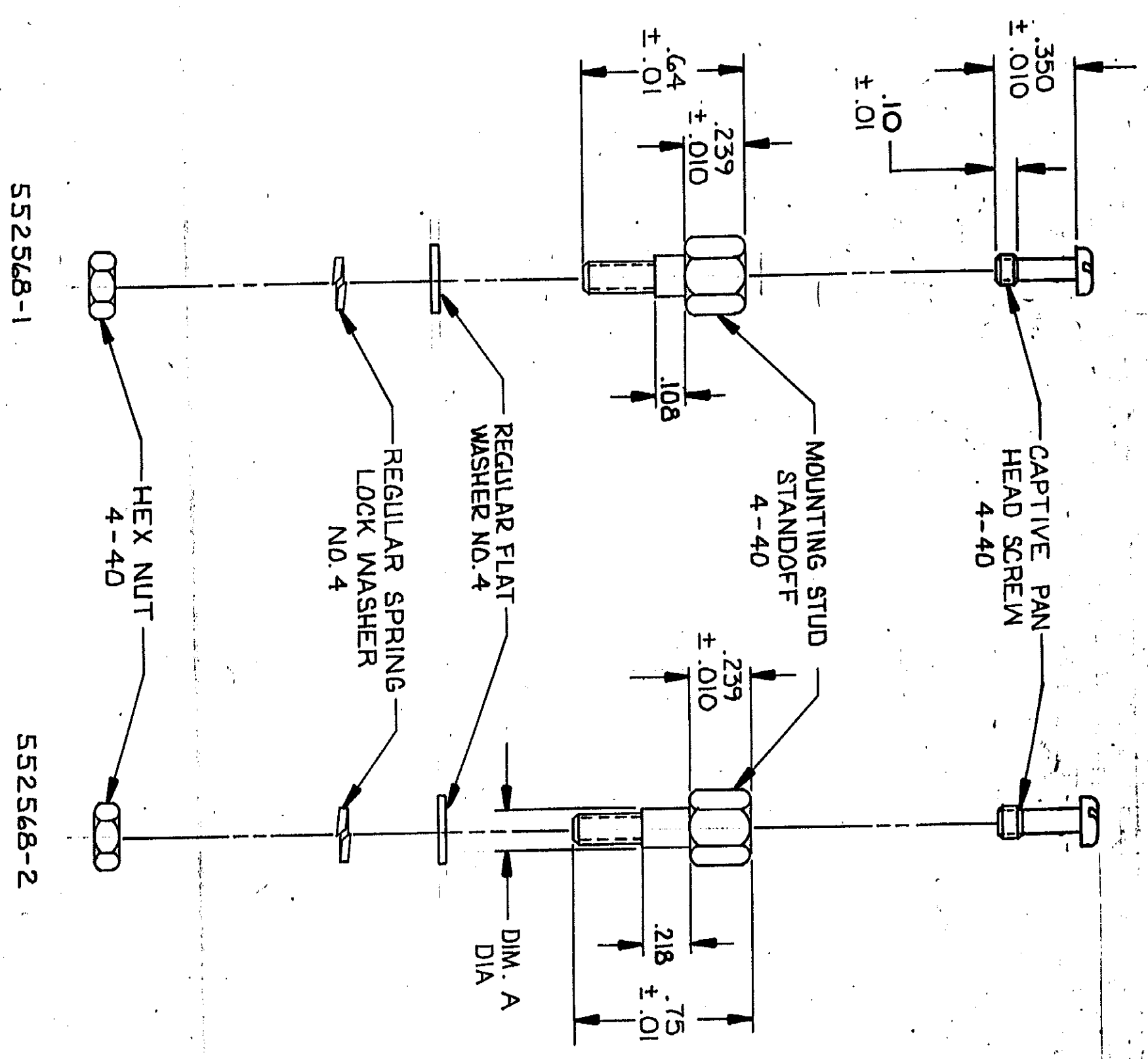
3

2

Loc DIST
AA 20

REV	DATE	APPROVED	DESCRIPTION
1	12/28/82	[Signature]	REV. ECN. AA-5071

- TWO (2) REQUIRED OF EACH COMPONENT PER KIT.
- MATERIAL: MOUNTING STUD & SLOTTED MOUNTING STUD - ZINC PLATE WITH YELLOW CHROMATE OVER STEEL. PAN HEAD SCREW, LOCKWASHER, WASHER & HEX NUT - ZINC PLATED STEEL.



UNLESS OTHERWISE SPECIFIED DIMENSIONS ARE IN INCHES. TOLERANCES ON: DECIMALS ±.005 ANGLES		CONTRACT NO. 3-17-83	
MATERIAL		DR. LARRY K. SMITH	DATE 6/1/83
FINISH		CHK. M. J. [Signature]	DATE 4-7-83
APPROVED [Signature]		APPROVED [Signature]	DATE 6/1/83
DESIGN APPROVED [Signature]		OTHER APPROVED [Signature]	

NAME	AMP INCORPORATED Harrisburg, Pa. 17105
SIZE	FSCM NO. 00779
SCALE	DRAWING NO. 552568
	SHEET 1 OF 1

HARDWARE KIT, SCREW LOCK, PANEL MOUNT, CHAMP

CUSTOMER DRAWING

552568