



Chipsmall Limited consists of a professional team with an average of over 10 year of expertise in the distribution of electronic components. Based in Hongkong, we have already established firm and mutual-benefit business relationships with customers from,Europe,America and south Asia,supplying obsolete and hard-to-find components to meet their specific needs.

With the principle of “Quality Parts,Customers Priority,Honest Operation,and Considerate Service”,our business mainly focus on the distribution of electronic components. Line cards we deal with include Microchip,ALPS,ROHM,Xilinx,Pulse,ON,Everlight and Freescale. Main products comprise IC,Modules,Potentiometer,IC Socket,Relay,Connector.Our parts cover such applications as commercial,industrial, and automotives areas.

We are looking forward to setting up business relationship with you and hope to provide you with the best service and solution. Let us make a better world for our industry!



Contact us

Tel: +86-755-8981 8866 Fax: +86-755-8427 6832

Email & Skype: info@chipsmall.com Web: www.chipsmall.com

Address: A1208, Overseas Decoration Building, #122 Zhenhua RD., Futian, Shenzhen, China



4

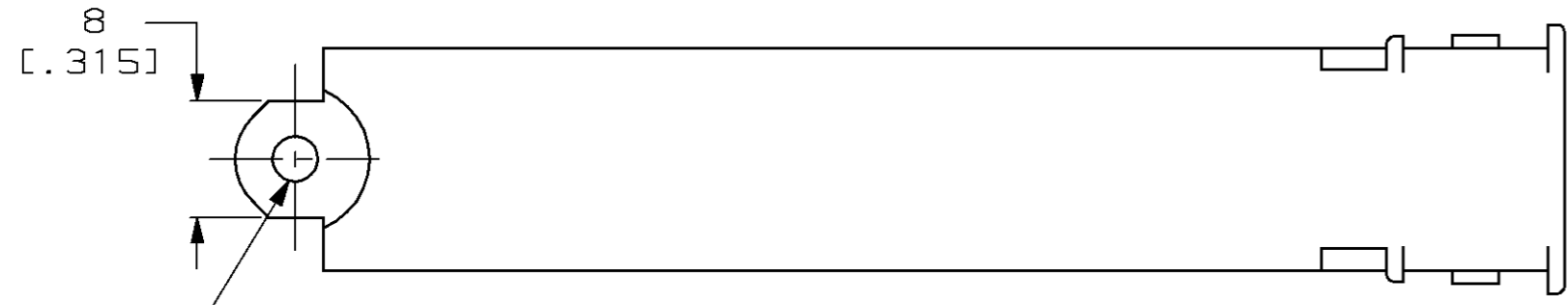
3

2

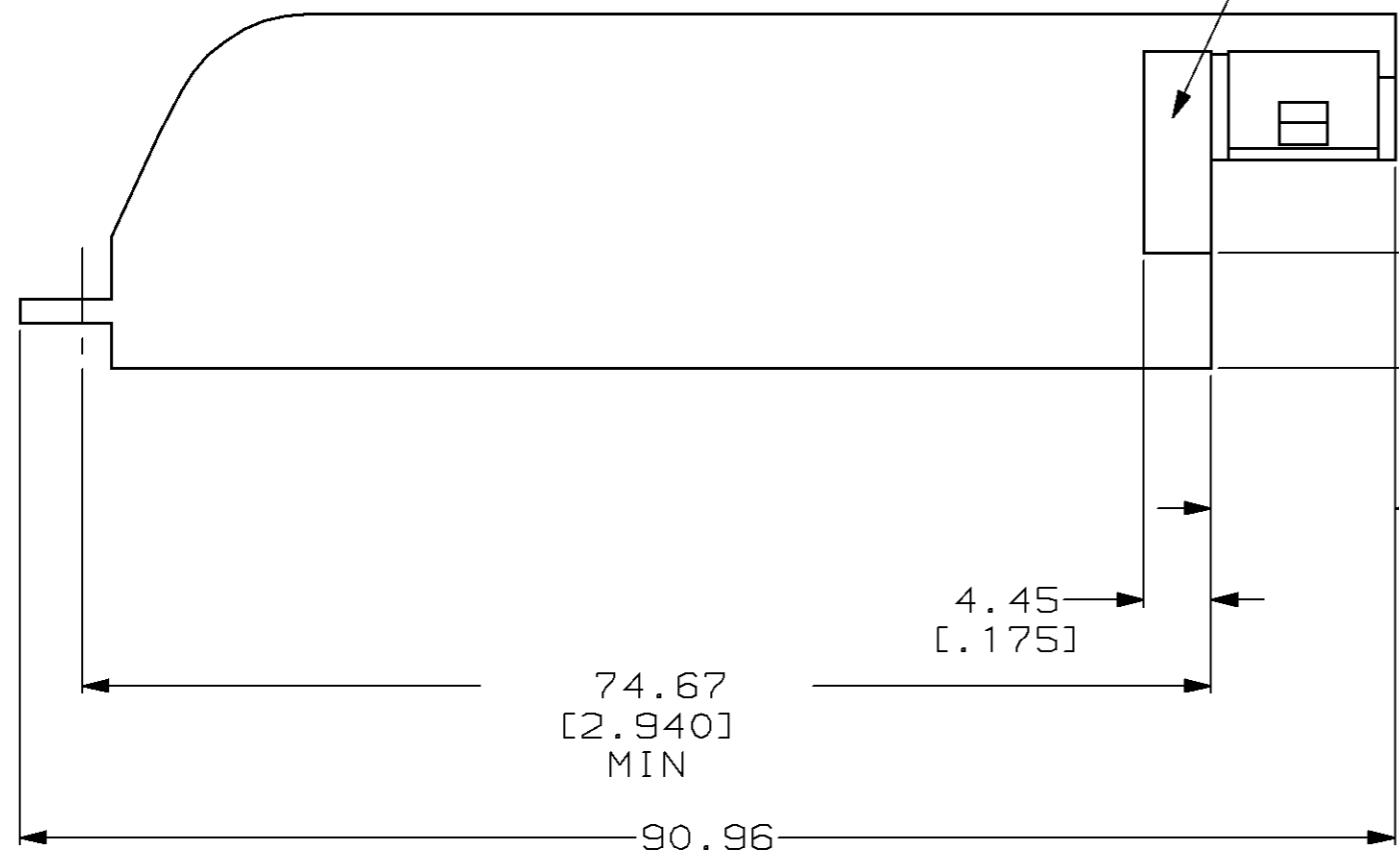
1

THIS DRAWING IS UNPUBLISHED. RELEASED FOR PUBLICATION, 19 .
 © COPYRIGHT 19 BY AMP INCORPORATED. ALL RIGHTS RESERVED.

LOC	DIST	REVISIONS			
P	LTR	DESCRIPTION	DATE	DWN	APVD
AA	20	A	REDRAWN PER EC 0502-0051-98	21 JAN 98	CW MH



8
[.315]
Ø3.15
[.124]
MAX



1.45 [.057]
MIN DEEP RECESS

74.67
[2.940]
MIN

90.96
[3.581]
REF

4.45
[.175]

7.62
[.300]

12.17
[.479]
REF

3.3
[.130]
REF

13.77
[.542]
REF

15.37
[.605]
MAX

18.42
[.725]
REF

23.55
[.927]
MAX

GRAY	552617-4
BLACK	552617-1
COLOR	PART NO.

THIS DRAWING IS A CONTROLLED DOCUMENT.		DWN T. PITTS 02JUL76	AMP AMP Incorporated Harrisburg, PA 17105-3608	
DIMENSIONS: mm [INCHES]		CHK J. COMPTON 02JUL76		
TOLERANCES UNLESS OTHERWISE SPECIFIED:		APVD G.H. FOSTER 02JUL76	NAME COVER, SLIDE-ON, 50 POSN, CHAMP®	
0 PLC ±-		PRODUCT SPEC	SIZE	
1 PLC ±-		APPLICATION SPEC	CAGE CODE	
2 PLC ±-		WEIGHT	DRAWING NO	
3 PLC ±.005		CUSTOMER DRAWING	A3 00779 C= 552617	
4 PLC ±-		RESTRICTED TO	SCALE 2:1	
ANGLES ±-		SCALE	SHEET 1 OF 1	
MATERIAL NORYL 990	FINISH -	REV	A	