



Chipsmall Limited consists of a professional team with an average of over 10 year of expertise in the distribution of electronic components. Based in Hongkong, we have already established firm and mutual-benefit business relationships with customers from,Europe,America and south Asia,supplying obsolete and hard-to-find components to meet their specific needs.

With the principle of “Quality Parts,Customers Priority,Honest Operation,and Considerate Service”,our business mainly focus on the distribution of electronic components. Line cards we deal with include Microchip,ALPS,ROHM,Xilinx,Pulse,ON,Everlight and Freescale. Main products comprise IC,Modules,Potentiometer,IC Socket,Relay,Connector.Our parts cover such applications as commercial,industrial, and automotives areas.

We are looking forward to setting up business relationship with you and hope to provide you with the best service and solution. Let us make a better world for our industry!



Contact us

Tel: +86-755-8981 8866 Fax: +86-755-8427 6832

Email & Skype: info@chipsmall.com Web: www.chipsmall.com

Address: A1208, Overseas Decoration Building, #122 Zhenhua RD., Futian, Shenzhen, China

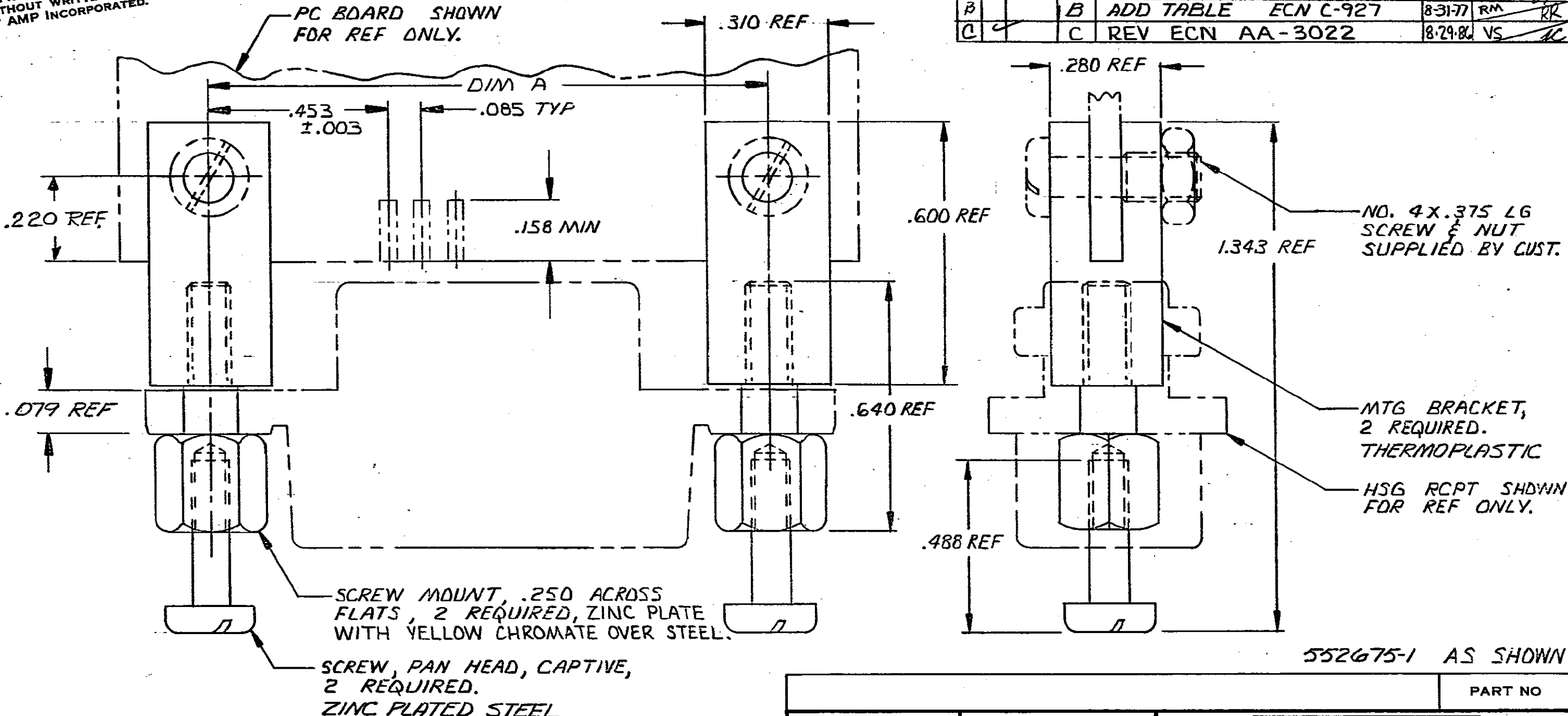


© COPYRIGHT 1976 BY AMP INCORPORATED, HARRISBURG, PA.
 ALL INTERNATIONAL RIGHTS RESERVED. AMP INCORPORATED PRODUCTS
 COVERED BY U. S. AND FOREIGN PATENTS AND/OR PATENTS PENDING.

UNPUBLISHED COPY NOT TO BE
 REPRODUCED NOR PUBLISHED
 WITHOUT WRITTEN PERMISSION
 OF AMP INCORPORATED.

REVISIONS

P	F	ZONE	LTR	DESCRIPTION	DATE	APPROVED
C			D	RELEASE NPR C77-22	4-14-77	TD
A			A	ADD .220 REF C-903	9/1/77	RM
B			B	ADD TABLE ECN C-927	8-31-77	RM
C			C	REV ECN AA-3022	8-29-80	VS



WHS P76-27294

64	3.542	▲
50	2.946	
36	2.352	
24	1.842	
14	1.416	.125
NO OF POSN	DIM A	MTG HOLE DIA

CHAMP* / CHAMP-LOK* Connectors
 * Trademarks of AMP Incorporated

UNLESS OTHERWISE SPECIFIED DIMENSIONS ARE IN INCHES. TOLERANCES ON: DECIMALS ±.015 ANGLES ± 1°		CONTRACT NO		AMP INCORPORATED Harrisburg, Pa.	
MATERIAL		DR. <i>Jerry Peltz</i> 2-12-77		NAME KIT, HARDWARE, SCREW LOCK, EDGE MT, CHAMP	
FINISH		CHK. <i>W. Condon</i> 4-26-77		SIZE B	
		APPR. <i>W. Condon</i> 4-27-77		CODE IDENT NO 00779	
		DSGN APPD		DRAWING NO 552675	
		OTHER APPD		SCALE 4-1	
				SHEET 1 OF 1	