



Chipsmall Limited consists of a professional team with an average of over 10 year of expertise in the distribution of electronic components. Based in Hongkong, we have already established firm and mutual-benefit business relationships with customers from,Europe,America and south Asia,supplying obsolete and hard-to-find components to meet their specific needs.

With the principle of “Quality Parts,Customers Priority,Honest Operation,and Considerate Service”,our business mainly focus on the distribution of electronic components. Line cards we deal with include Microchip,ALPS,ROHM,Xilinx,Pulse,ON,Everlight and Freescale. Main products comprise IC,Modules,Potentiometer,IC Socket,Relay,Connector.Our parts cover such applications as commercial,industrial, and automotives areas.

We are looking forward to setting up business relationship with you and hope to provide you with the best service and solution. Let us make a better world for our industry!



Contact us

Tel: +86-755-8981 8866 Fax: +86-755-8427 6832

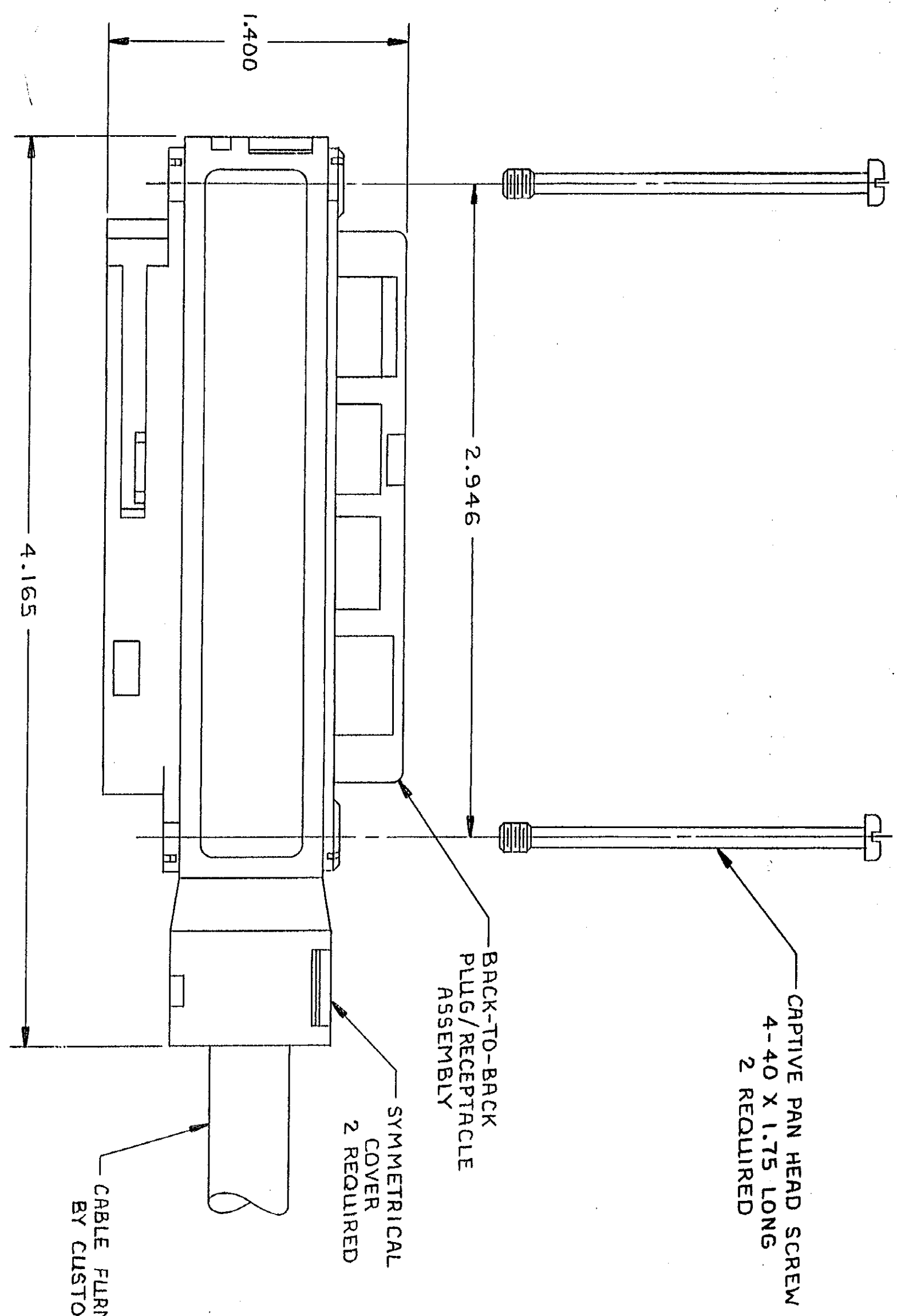
Email & Skype: info@chipsmall.com Web: www.chipsmall.com

Address: A1208, Overseas Decoration Building, #122 Zhenhua RD., Futian, Shenzhen, China



© COPYRIGHT 1980 BY AMP INCORPORATED, HARRISBURG, PA.
 ALL INTERNATIONAL RIGHTS RESERVED. AMP INCORPORATED PRODUCTS
 COVERED BY U. S. AND FOREIGN PATENTS AND/OR PATENTS PENDING.

REVOLUTIONS		DATE	APPROVED	LOG DIST
P	F	ZONE	LTR	DESCRIPTION
1				AA-7810
2				REVISED; EON AA-7810
		1-3-92	LHS	ST



- △ MATERIAL: HOUSINGS & COVERS - THERMOPLASTIC (BLACK)
 TERMINALS - GOLD OVER NICKEL PLATED
 HIGH STRENGTH COPPER ALLOY.
 HARDWARE - ZINC PLATED STEEL
1. KIT SHOWN ASSEMBLED, HOWEVER, HARDWARE AND COVERS ARE INSTALLED AFTER CABLE IS APPLIED TO CONNECTORS.
 2. COVERS AND HARDWARE SHIPPED UNASSEMBLED.
 3. WIRE SIZE: 26 AWG SOLID OR 24 AWG 7 STRANDS OF COPPER CONDUCTORS. MAX INSULATION DIA OF .045 IS ACCEPTABLE FOR MOST APPLICATIONS.
 4. CABLE RANGE: .380 - .400 DIA.
 5. PLUG AND RECEPTACLE ARE BONDED TOGETHER.
 6. THE CONTACT SURFACES OF THE TERMINALS ARE COATED WITH LUBRICANT.
 7. ALL DIMENSIONS SHOWN ARE FOR REFERENCE ONLY UNLESS OTHERWISE SPECIFIED.
 8. CENTER-TO-CENTER SPACING OF TERMINALS IS .085.
 9. KIT SHIPPED IN POLY BAG FORM.

553257-1 AS SHOWN

UNLESS OTHERWISE SPECIFIED DIMENSIONS ARE IN INCHES. TOLERANCES ON: DECIMALS ± .005 ANGLES ± .1		CONTRACT NO		PART NO	
MATERIAL		DR <i>O. Nell</i> 11-11-80		AMP INCORPORATED Harrisburg, Pa.	
FINISH		CHK <i>MDF</i> 11-12-80		NAME	
△		APPD <i>S. Hill</i> 11-12-80		KIT, BACK-TO-BACK, 50 POSITION, B SLOT (CHAMP-LOK, PLUG/RECEPTACLE, THIN FLANGE)	
△		DSGN APPD <i>R. K. ...</i> 11/13/80		SIZE CODE IDENT NO DRAWING NO	
△		OTHER APPD <i>R. K. ...</i> 11/13/80		C 00779 553257	
		SCALE 2/1		SHEET 1 OF 1	

CUSTOMER DRAWING

553257