



Chipsmall Limited consists of a professional team with an average of over 10 year of expertise in the distribution of electronic components. Based in Hongkong, we have already established firm and mutual-benefit business relationships with customers from,Europe,America and south Asia,supplying obsolete and hard-to-find components to meet their specific needs.

With the principle of “Quality Parts,Customers Priority,Honest Operation,and Considerate Service”,our business mainly focus on the distribution of electronic components. Line cards we deal with include Microchip,ALPS,ROHM,Xilinx,Pulse,ON,Everlight and Freescale. Main products comprise IC,Modules,Potentiometer,IC Socket,Relay,Connector.Our parts cover such applications as commercial,industrial, and automotives areas.

We are looking forward to setting up business relationship with you and hope to provide you with the best service and solution. Let us make a better world for our industry!



Contact us

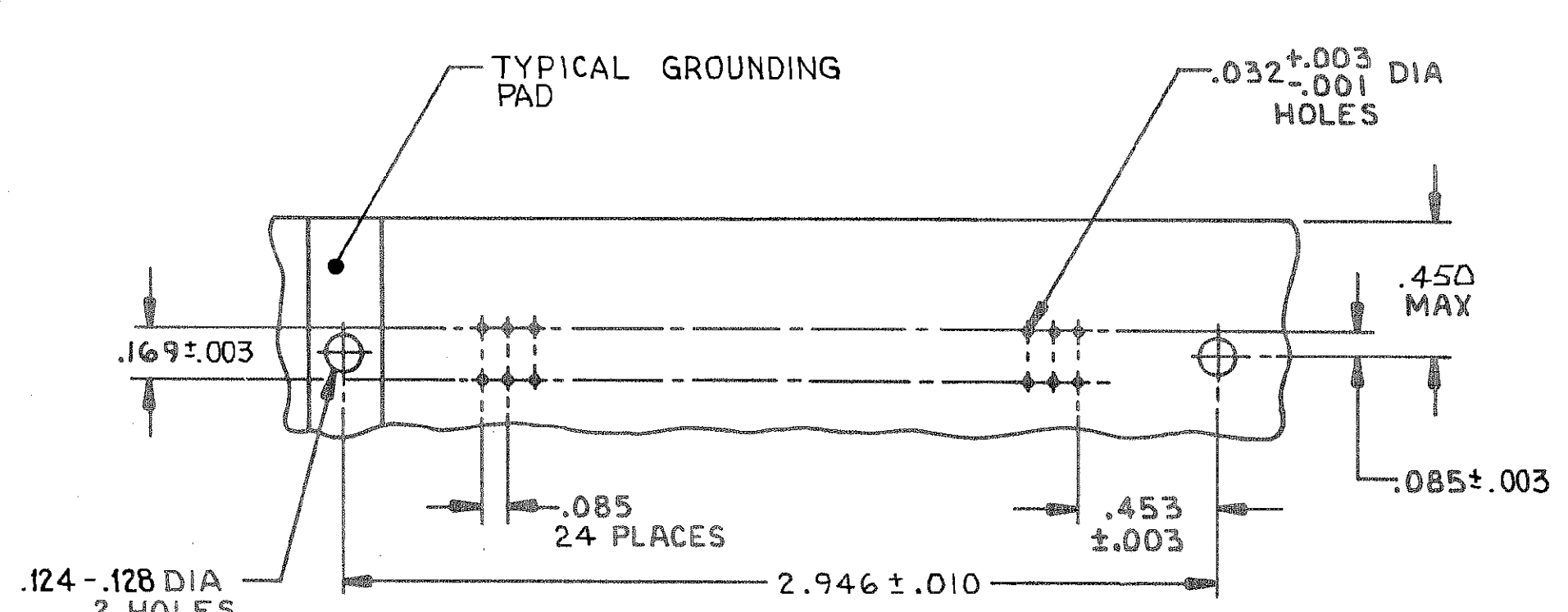
Tel: +86-755-8981 8866 Fax: +86-755-8427 6832

Email & Skype: info@chipsmall.com Web: www.chipsmall.com

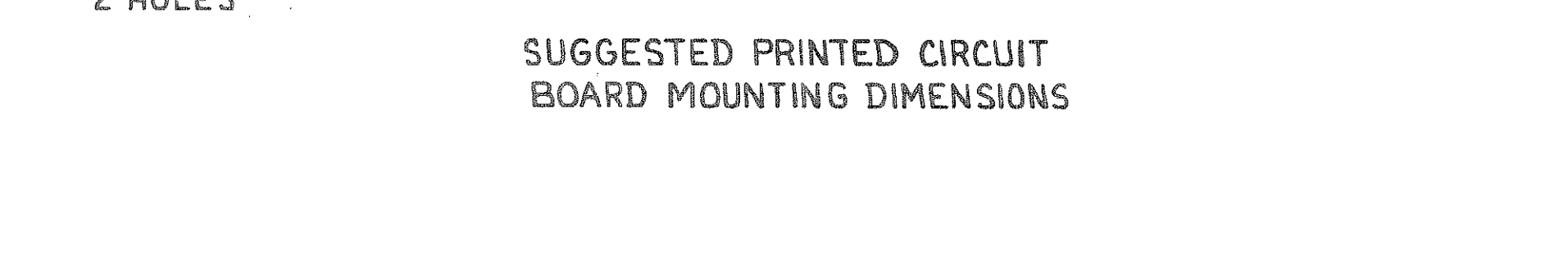
Address: A1208, Overseas Decoration Building, #122 Zhenhua RD., Futian, Shenzhen, China



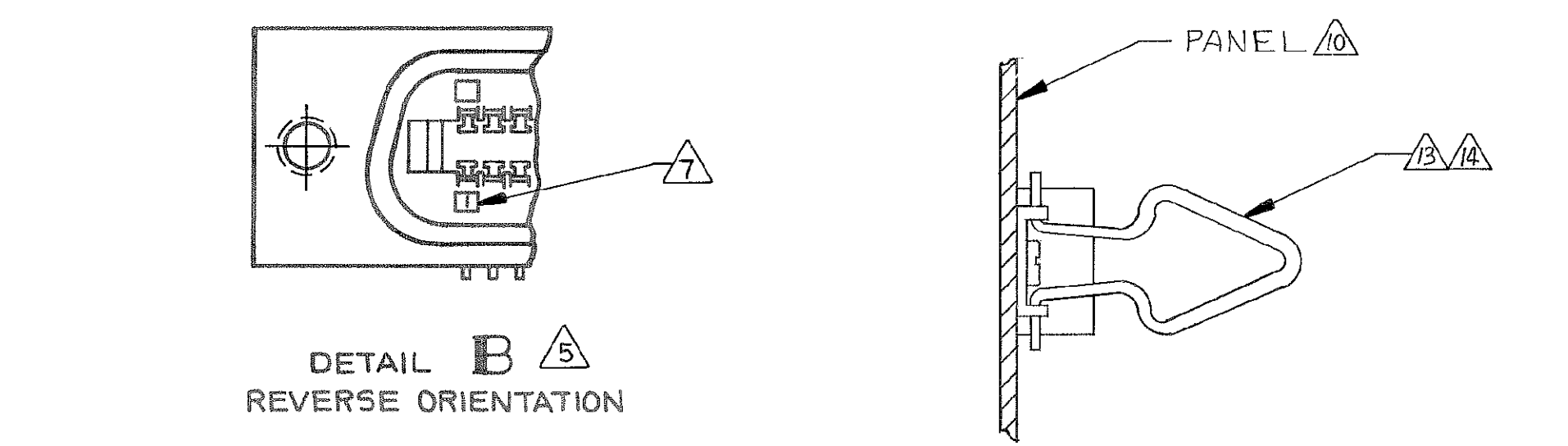
REVOLUTIONS		DATE	APPROVED
P	F		
P		5-31-89	[Signature]
R		4-17-03	[Signature]



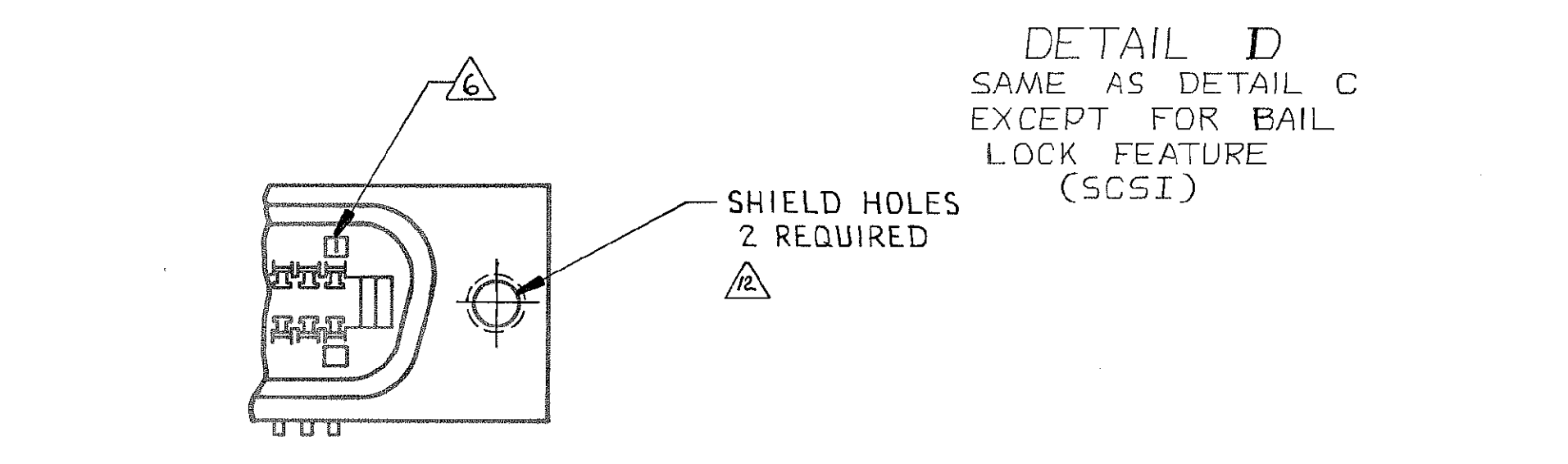
SUGGESTED PRINTED CIRCUIT BOARD MOUNTING DIMENSIONS



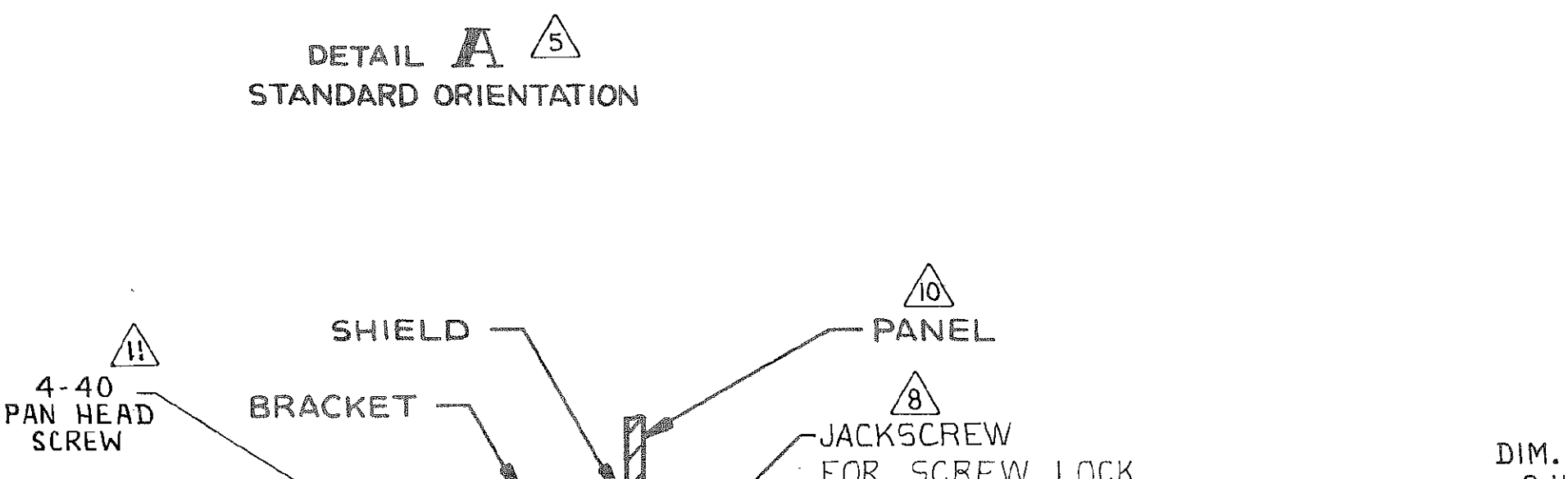
DETAIL B REVERSE ORIENTATION



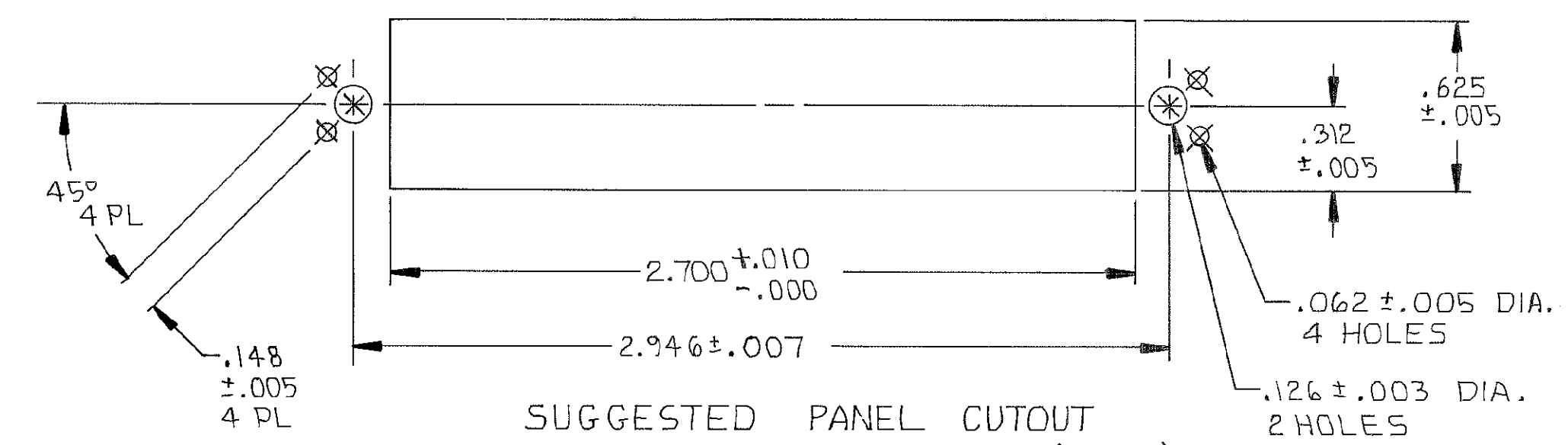
DETAIL D SAME AS DETAIL C EXCEPT FOR BAIL LOCK FEATURE (SCSI)



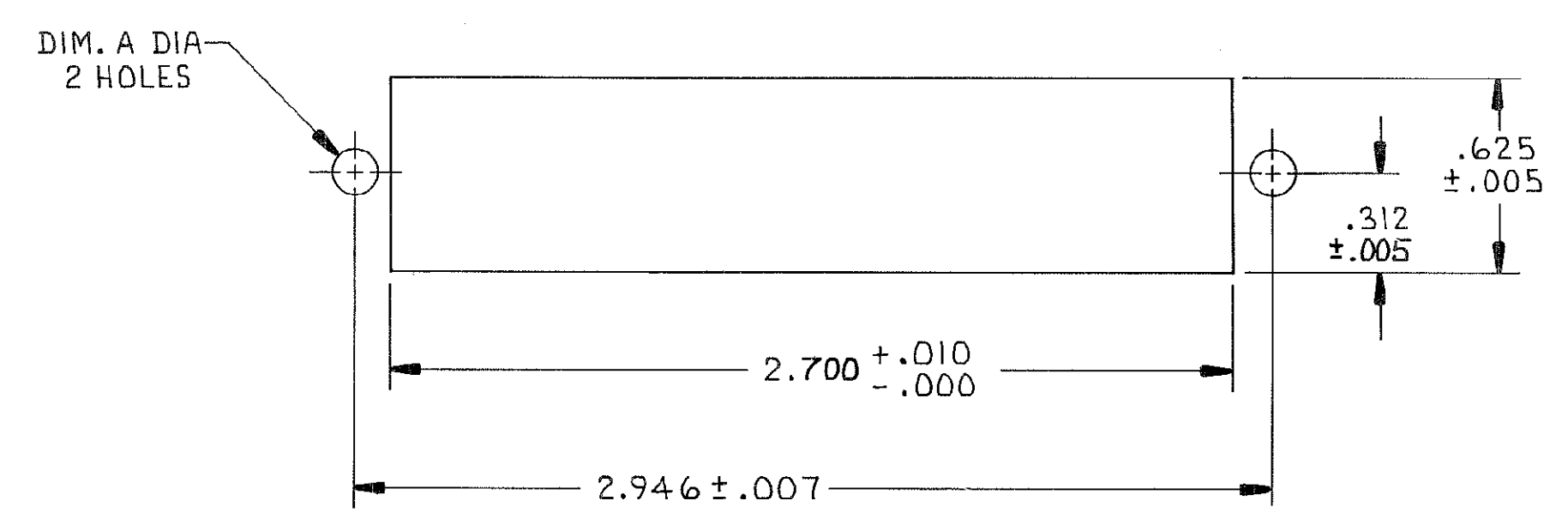
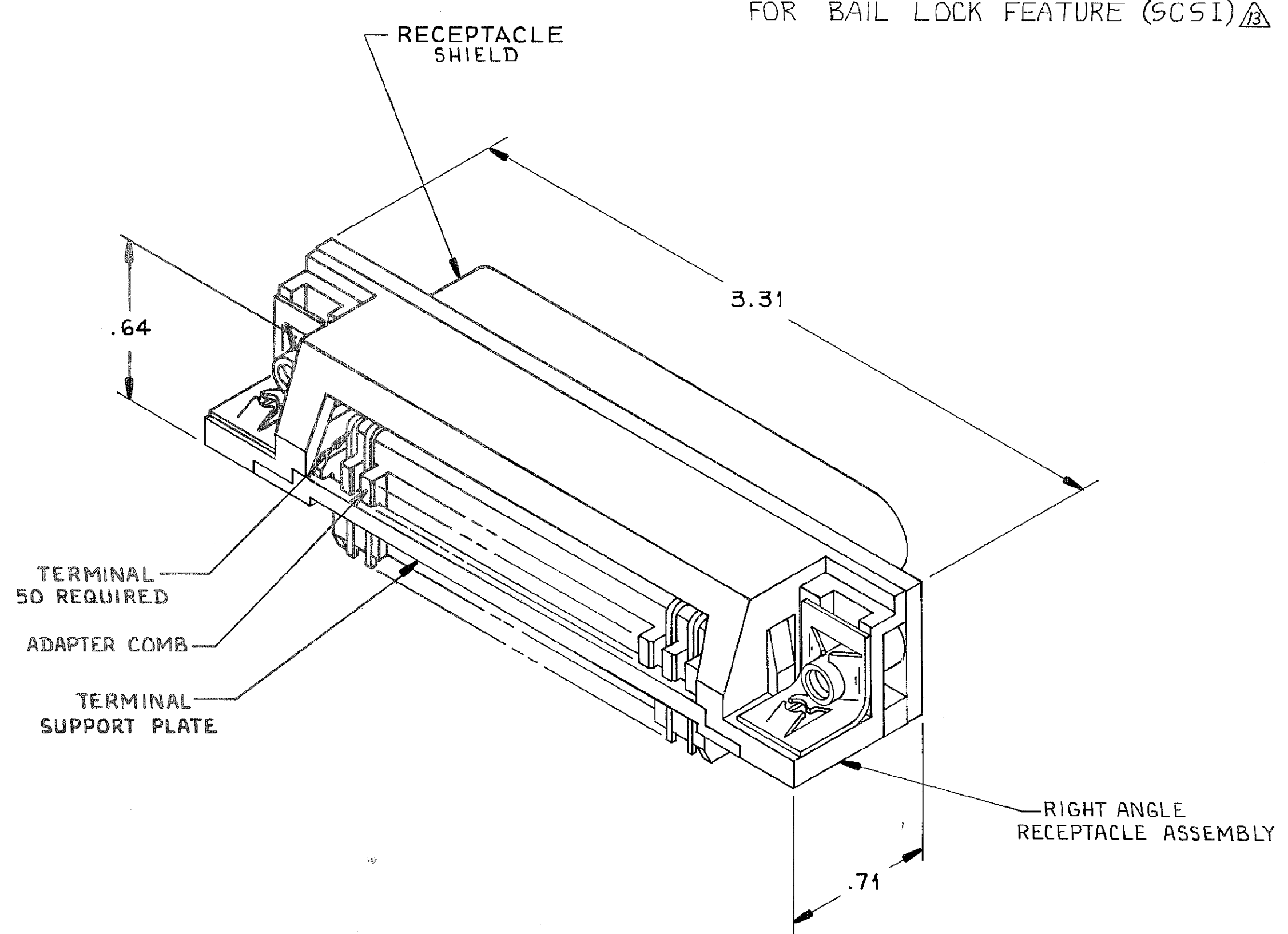
DETAIL A STANDARD ORIENTATION



REAR PANEL MOUNTING DETAIL SHOWN FOR REFERENCE ONLY



SUGGESTED PANEL CUTOUT FOR BAIL LOCK FEATURE (SCSI)



SUGGESTED PANEL CUTOUT FOR SCREW LOCK FEATURE

- △ MATERIAL: HOUSING, BRACKET, ADAPTER COMB AND TERMINAL SUPPORT PLATE - POLYESTER MOLDING COMPOUND, UL 94V-D RATING, BLACK SHIELD - BRIGHT NICKEL OVER COPPER PLATED DIE CASTING. TERMINALS - TAILS - TIN LEAD OVER NICKEL PLATED HIGH STRENGTH COPPER ALLOY. MATING SURFACE - LOCALIZED GOLD OVER NICKEL PLATED HIGH STRENGTH COPPER ALLOY. GROUNDING BRACKET - ZINC PLATED STEEL.
- 2. THE CONTACT SURFACES OF THE TERMINALS ARE COATED WITH LUBRICANT.
- 3. CENTER-TO-CENTER SPACING OF TERMINALS IS .085 NOMINAL.
- 4. ALL DIMENSIONS SHOWN ARE MAXIMUM UNLESS OTHERWISE SPECIFIED.
- △ 5. DETAILS A & B ARE VIEWED FROM MATING SIDE OF RECEPTACLE ASSEMBLY.
- △ 6. TERMINAL 1 LOCATED IN THIS ROW FOR STANDARD ORIENTATION.
- △ 7. TERMINAL 1 LOCATED IN THIS ROW FOR REVERSE ORIENTATION.
- △ 8. SCREWS SHOWN FOR REFERENCE ONLY. RECOMMENDED HARDWARE KIT 554272-1 FOR USE WITH PART NUMBER 553813-3 & 4. WHEN SCREW LOCK FEATURE IS REQUIRED.
- 9. SHIELD IS ASSEMBLED TO CONNECTOR BEFORE SHIPMENT.
- △ 10. PANEL THICKNESS RANGE: .062 MAX.
- △ 11. STAINLESS STEEL SCREWS RECOMMENDED, BECAUSE OF CONTACT WITH SOLDER BATH.
- △ 12. HOLES TO BE TAPPED AFTER PLATING.
- △ 13. USE HARDWARE KIT 554818-2 FOR PARTS NUMBERS 553813-3 & 4. WHEN BAIL LOCK FEATURE IS REQUIRED.
- △ 14. THE BAIL LOCK FEATURE HAS APPLICATION FOR SMALL COMPUTER SYSTEMS INTERFACE (SCSI).

UNLESS OTHERWISE SPECIFIED DIMENSIONS ARE IN INCHES. TOLERANCES ON: DECIMALS ± ANGLES ±	CONTRACT NO	AMP INCORPORATED Harrisburg, Pa. 17105			
DR A. Holt 7-28-82		NAME RECEPTACLE ASSEMBLY, SHIELDED, 50 POSITION, RIGHT ANGLE WITH GROUND BRACKET, CHAMP®			
CHK MDHiel 8-4-82		SIZE D FSCM NO 00779 DRAWING NO 553813			
APPD W. Park 7-1-82		SCALE 2:1 SHEET 1 OF 1			
APPD [Signature] 9-1-82		OTHER APPD			