



Chipsmall Limited consists of a professional team with an average of over 10 year of expertise in the distribution of electronic components. Based in Hongkong, we have already established firm and mutual-benefit business relationships with customers from,Europe,America and south Asia,supplying obsolete and hard-to-find components to meet their specific needs.

With the principle of “Quality Parts,Customers Priority,Honest Operation,and Considerate Service”,our business mainly focus on the distribution of electronic components. Line cards we deal with include Microchip,ALPS,ROHM,Xilinx,Pulse,ON,Everlight and Freescale. Main products comprise IC,Modules,Potentiometer,IC Socket,Relay,Connector.Our parts cover such applications as commercial,industrial, and automotives areas.

We are looking forward to setting up business relationship with you and hope to provide you with the best service and solution. Let us make a better world for our industry!



## Contact us

Tel: +86-755-8981 8866 Fax: +86-755-8427 6832

Email & Skype: info@chipsmall.com Web: www.chipsmall.com

Address: A1208, Overseas Decoration Building, #122 Zhenhua RD., Futian, Shenzhen, China



4

3

2

1

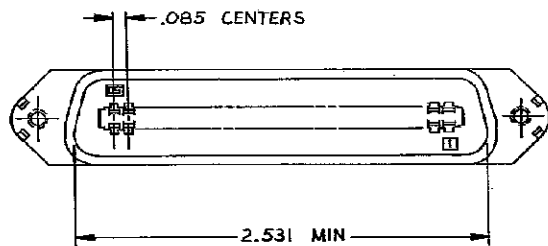
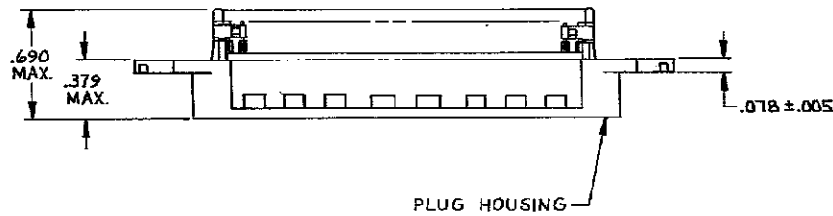
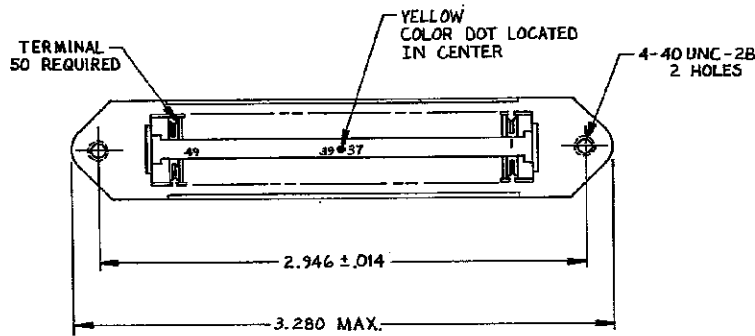
THIS DRAWING IS UNPUBLISHED. RELEASED FOR PUBLICATION  
 © COPYRIGHT BY TYCO ELECTRONICS CORPORATION. ALL RIGHTS RESERVED.

LOC		DST		REVISIONS			
GP	00	TP	LVR	DESCRIPTION	DATE	OWN	APPD
		F		REVISED PER ECO-08-007327	27JAN2009	ZMR	WLM

1. THE CONTACT SURFACES OF THE TERMINALS ARE COATED WITH LUBRICANT.

△ MATERIAL:  
 HOUSING & STRAIN RELIEF CLIP- POLYPHENYLENE OXIDE (BLACK)  
 TERMINALS - HIGH STRENGTH COPPER ALLOY PLATED WITH EITHER .000030 MIN GOLD OR GOLD FLASH OVER PALLADIUM NICKEL .000030 MIN TOTAL, ON CONTACT MATING SURFACE. .000050 MIN NICKEL UNDERPLATE OVER ENTIRE TERMINAL.

3. WIRE SIZE: 26, 27 OR 28 AWG 7 STRANDS OF COPPER CONDUCTORS MAXIMUM INSULATION  $\phi$ .045 IS ACCEPTABLE FOR MOST APPLICATIONS.



AS SHOWN	554337-1
DESCRIPTION	PART NO

THIS DRAWING IS A CONTROLLED DOCUMENT.		DWN BYERLY 10-27-83 CHK M.D. FRIEL 11-30-83 APD WAYNE PULE 1-5-84 NAME PRODUCT SPEC APPLICATION SPEC WEIGHT CUSTOMER DRAWING	Tyco Electronics Corporation Harrisburg, PA 17105-3608 EMI PLUG ASSY, 50 POSITION, E SLOT SCREW LOCK W/ 4-40 HOLES CHAMP SIZE A2 PAGE CODE 00779 DRAWING NO C=554337 SCALE NTS SHEET 1 of 1 REV F
DIMENSIONS: INCHES 0 PLC ± - 1 PLC ± - 2 PLC ± - 3 PLC ± - 4 PLC ± - ANGLES ± -	TOLERANCES UNLESS OTHERWISE SPECIFIED: 0 PLC ± - 1 PLC ± - 2 PLC ± - 3 PLC ± - 4 PLC ± - ANGLES ± -	RESTRICTED TO -	