



Chipsmall Limited consists of a professional team with an average of over 10 year of expertise in the distribution of electronic components. Based in Hongkong, we have already established firm and mutual-benefit business relationships with customers from,Europe,America and south Asia,supplying obsolete and hard-to-find components to meet their specific needs.

With the principle of “Quality Parts,Customers Priority,Honest Operation,and Considerate Service”,our business mainly focus on the distribution of electronic components. Line cards we deal with include Microchip,ALPS,ROHM,Xilinx,Pulse,ON,Everlight and Freescale. Main products comprise IC,Modules,Potentiometer,IC Socket,Relay,Connector.Our parts cover such applications as commercial,industrial, and automotives areas.

We are looking forward to setting up business relationship with you and hope to provide you with the best service and solution. Let us make a better world for our industry!



## Contact us

Tel: +86-755-8981 8866 Fax: +86-755-8427 6832

Email & Skype: [info@chipsmall.com](mailto:info@chipsmall.com) Web: [www.chipsmall.com](http://www.chipsmall.com)

Address: A1208, Overseas Decoration Building, #122 Zhenhua RD., Futian, Shenzhen, China



LOC	DIST	REVISIONS					
		P	LTR	DESCRIPTION	DATE	DWN	APVD
HM	00		G1	REVISED PER ECO-11-005033	21MAR11	RK	HMR

D

C

B

A

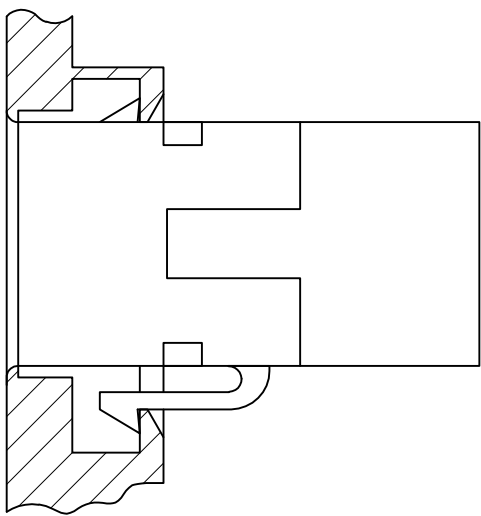
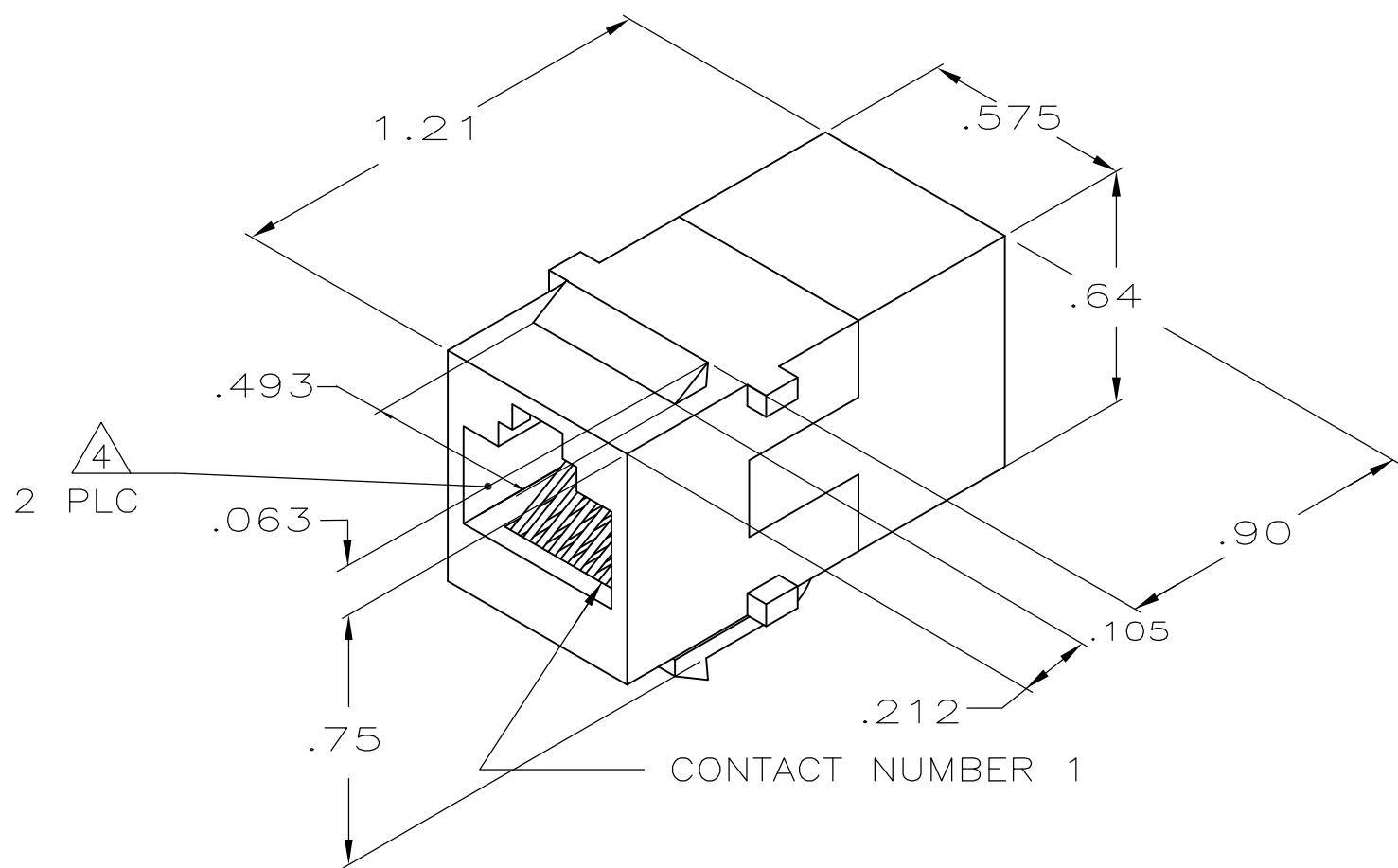
D

C

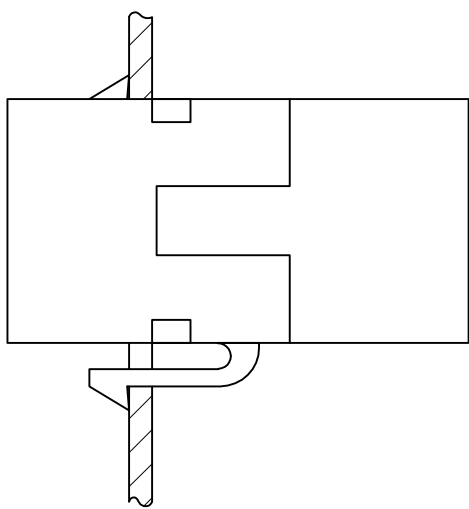
B

A

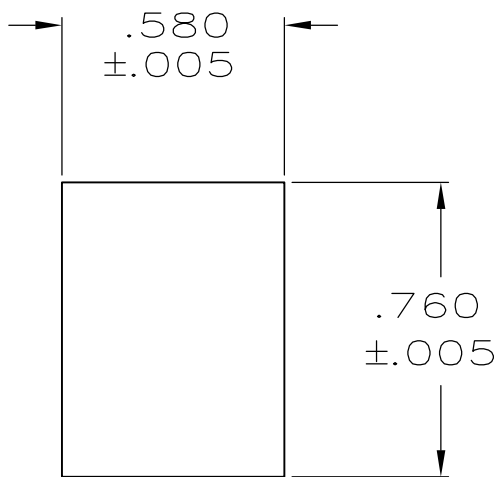
1. ALL DIMENSIONS SHOWN ARE MAXIMUM UNLESS OTHERWISE SPECIFIED.
- 2 MATERIAL:  
HOUSING - POLYPHENYLENE OXIDE, BLACK.  
TERMINAL - .018 DIA PHOSPHOR BRONZE PLATED WITH .000050 MINIMUM THICK GOLD OVER .000050 MINIMUM THICK NICKEL.
3. MOUNTING PANEL THICKNESS .062 NOMINAL.
- 4 CAVITIES SHALL CONFORM TO FCC RULES AND REGULATIONS,PART 68,SUBPART F.
- 5 BULK P/N = 2-555052-1. BULK PACK IN QUANTITIES OF 100 PCS.



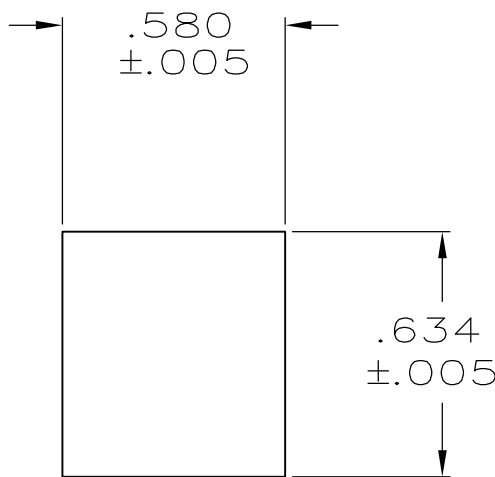
DOUBLE WALL PLATE  
NOT TO SCALE



SINGLE WALL PLATE



RECOMMENDED PANEL CUTOUT  
FOR SINGLE WALL PLATE  
AND BACK PANEL FOR  
DOUBLE WALL PLATE



RECOMMENDED FRONT PANEL  
CUTOUT FOR DOUBLE  
WALL PLATE

5 2-555052-1
555052-1
PART NO

THIS DRAWING IS A CONTROLLED DOCUMENT.		DWN	22JUN05	TE Connectivity			
		CHK	22JUN05				
		APVD	22JUN05	NAME			
		PRODUCT SPEC		COUPLER ASSEMBLY, 8 POSITION, IN-LINE			
		APPLICATION SPEC		SIZE	CAGE CODE	DRAWING NO	RESTRICTED TO
				A2	00779	C=555052	-
		WEIGHT					
		CUSTOMER DRAWING		SCALE	2:1	SHEET	1 of 1
				REV			
				G1			