



Chipsmall Limited consists of a professional team with an average of over 10 year of expertise in the distribution of electronic components. Based in Hongkong, we have already established firm and mutual-benefit business relationships with customers from,Europe,America and south Asia,supplying obsolete and hard-to-find components to meet their specific needs.

With the principle of “Quality Parts,Customers Priority,Honest Operation,and Considerate Service”,our business mainly focus on the distribution of electronic components. Line cards we deal with include Microchip,ALPS,ROHM,Xilinx,Pulse,ON,Everlight and Freescale. Main products comprise IC,Modules,Potentiometer,IC Socket,Relay,Connector.Our parts cover such applications as commercial,industrial, and automotives areas.

We are looking forward to setting up business relationship with you and hope to provide you with the best service and solution. Let us make a better world for our industry!



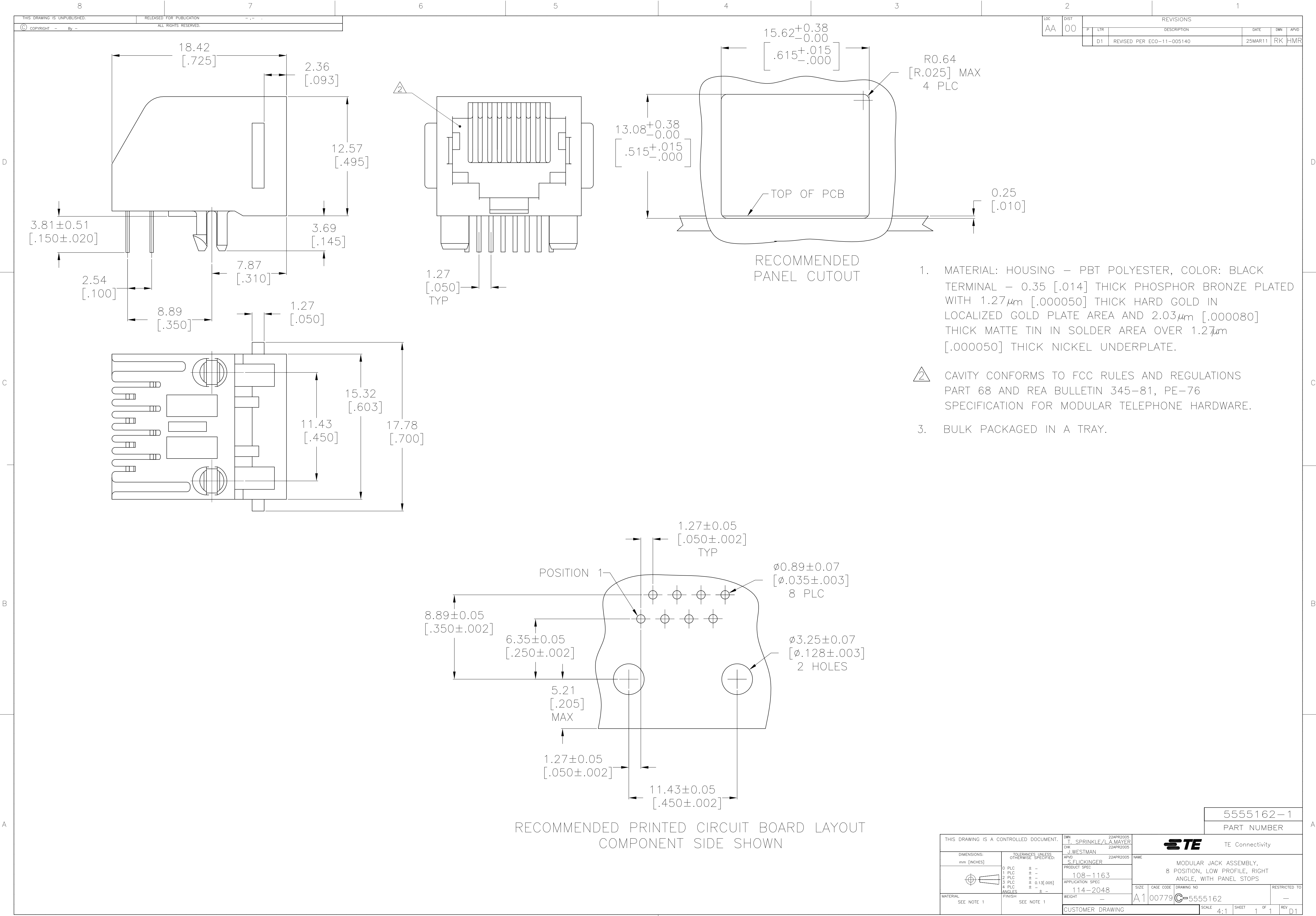
Contact us

Tel: +86-755-8981 8866 Fax: +86-755-8427 6832

Email & Skype: info@chipsmall.com Web: www.chipsmall.com

Address: A1208, Overseas Decoration Building, #122 Zhenhua RD., Futian, Shenzhen, China





LOC		DIST		REVISONS			
AA	00	P	LTR	DESCRIPTION		DATE	DWN
		D1		REVISED PER ECO–11–005140		25MAR11	RK

THIS DRAWING IS A CONTROLLED DOCUMENT.				5555162–1			
				PART NUMBER			
DIMENSIONS: mm [INCHES]				TE Connectivity			
TOLERANCES UNLESS OTHERWISE SPECIFIED:				MODULAR JACK ASSEMBLY, 8 POSITION, LOW PROFILE, RIGHT ANGLE, WITH PANEL STOPS			
0 PLC ± – 1 PLC ± – 2 PLC ± – 3 PLC ± 0.13 [.005] 4 PLC ± – ANGLES ± –				RESTRICTED TO			
MATERIAL SEE NOTE 1				A1 00779 5555162			
CUSTOMER DRAWING				SCALE 4:1 SHEET 1 OF 1 REV D1			