



Chipsmall Limited consists of a professional team with an average of over 10 year of expertise in the distribution of electronic components. Based in Hongkong, we have already established firm and mutual-benefit business relationships with customers from,Europe,America and south Asia,supplying obsolete and hard-to-find components to meet their specific needs.

With the principle of “Quality Parts,Customers Priority,Honest Operation,and Considerate Service”,our business mainly focus on the distribution of electronic components. Line cards we deal with include Microchip,ALPS,ROHM,Xilinx,Pulse,ON,Everlight and Freescale. Main products comprise IC,Modules,Potentiometer,IC Socket,Relay,Connector.Our parts cover such applications as commercial,industrial, and automotives areas.

We are looking forward to setting up business relationship with you and hope to provide you with the best service and solution. Let us make a better world for our industry!



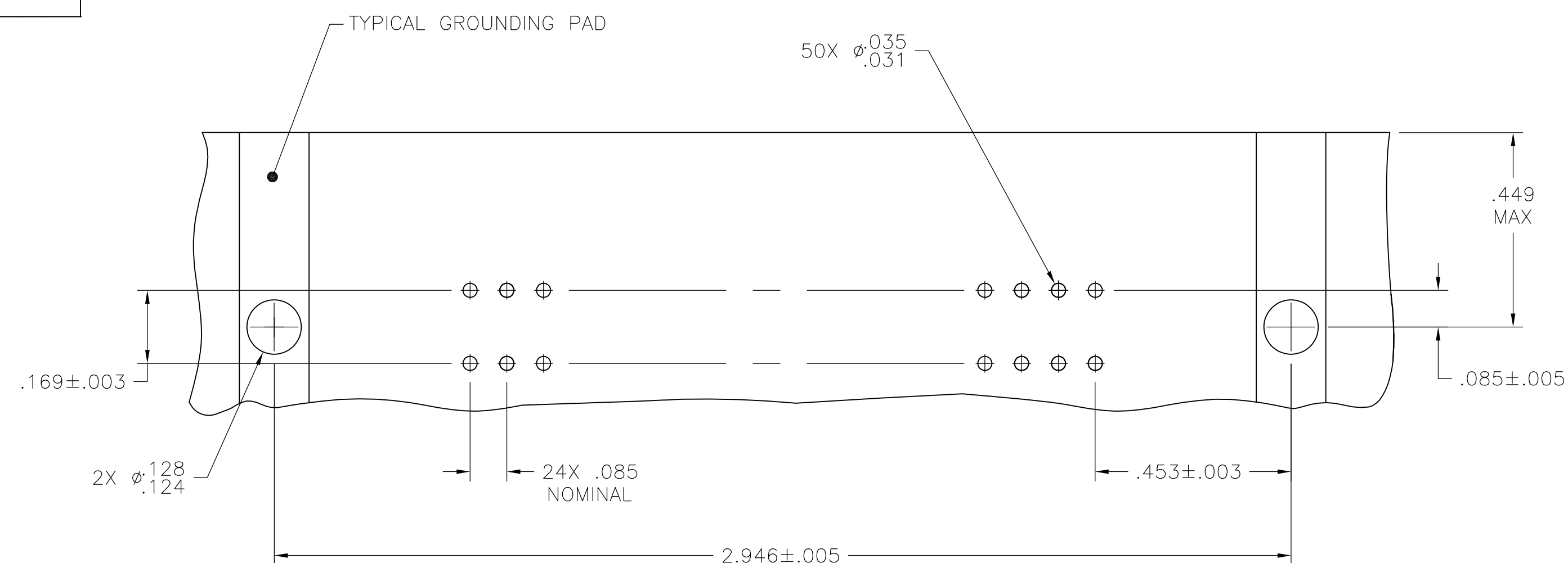
Contact us

Tel: +86-755-8981 8866 Fax: +86-755-8427 6832

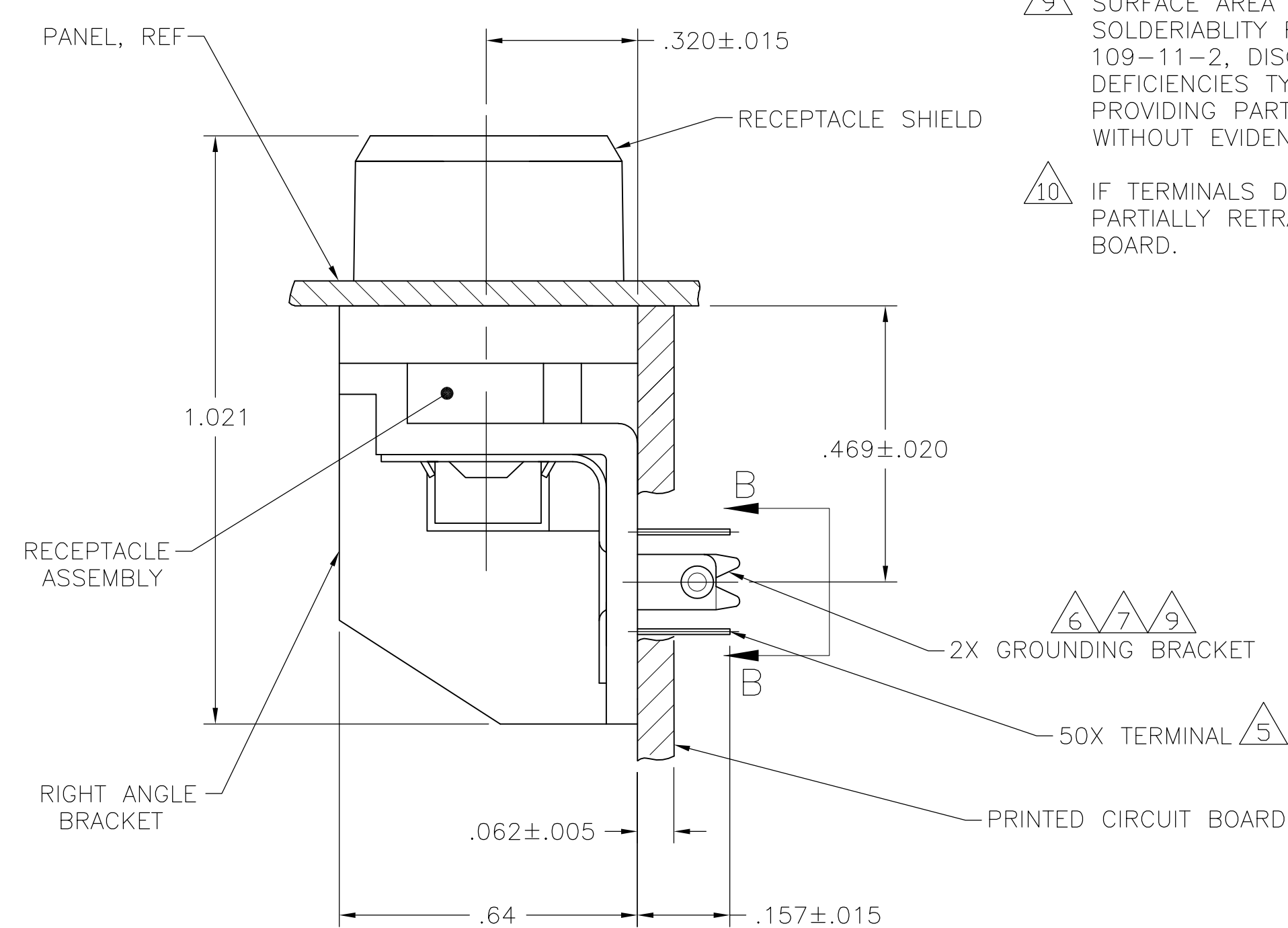
Email & Skype: info@chipsmall.com Web: www.chipsmall.com

Address: A1208, Overseas Decoration Building, #122 Zhenhua RD., Futian, Shenzhen, China

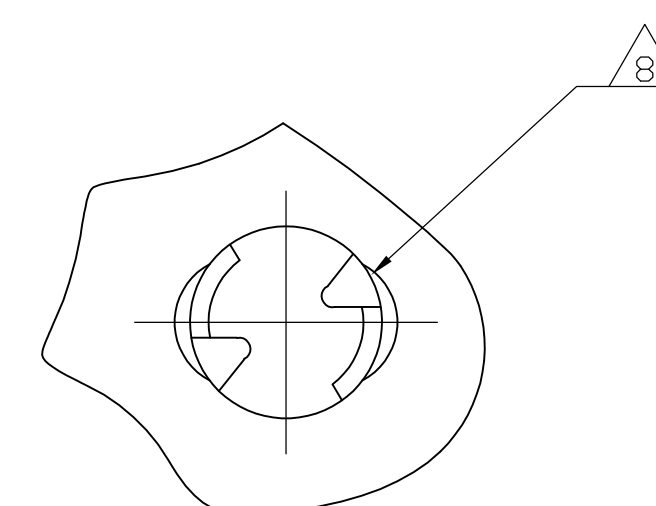




SUGGESTED PRINTED CIRCUIT BOARD
MOUNTING DIMENSIONS




SIDE VIEW A-A



DETAIL B-B

- 1 MATERIAL:
HOUSING, RIGHT ANGLE BRACKET, ADAPTER COMB & TERMINAL SUPPORT
PLATE - THERMOPLASTIC, BLACK.
RECEPTACLE SHIELD - BRIGHT NICKEL OVER COPPER PLATED DIE
CASTING.
TERMINALS - HIGH STRENGTH COPPER ALLOY PLATED WITH EITHER
.000030 MIN GOLD PLATE OR GOLD FLASH OVER PALLADIUM NICKEL
PLATE, .000030 MIN TOTAL ON MATING SURFACE. .000120 MIN TIN
PLATE ON TAILS. ALL OVER .000050 MIN NICKEL UNDERPLATE OVER
ENTIRE TERMINAL.
GROUND BRACKET - TIN PLATED CARBON STEEL.
2. THE CONTACT SURFACES OF THE TERMINALS ARE COATED WITH
LUBRICANT.
3. CENTER TO CENTER SPACING OF TERMINALS IS .085 NOMINAL.
- 4 ALL DIMENSIONS ARE MAXIMUM UNLESS OTHERWISE SPECIFIED.
- 5 TERMINAL 1 IS LOCATED IN THIS ROW FOR STANDARD ORIENTATION, SEE
DETAIL A.
- 6 GROUNDING BRACKET RETAINS CONNECTOR IN .062 THICK PC BOARD
WITHOUT ADDITIONAL HARDWARE.
- 7 GROUNDING BRACKET LOCATES CONNECTOR FLUSH WITH TOP OF PC
BOARD AND SPRING LOCKS BENEATH.
- 8 CYLINDRICAL SHAPE OFFERS 180° OF SOLDERING SURFACE.
- 9 SURFACE AREA OF GROUNDING BRACKET BELOW PC BOARD SHALL PASS
SOLDERABILITY REQUIREMENTS IN ACCORDANCE WITH AMP SPECIFICATION
109-11-2, DISCOLORATION, SCRATCHES, SPOTS AND OTHER COSMETIC
DEFICIENCIES TYPICAL OF BARREL PLATING PROCESS ARE ACCEPTABLE
PROVIDING PARTS PASS 24 HOUR EXPOSURE AT 95% RH AT 40°C,
WITHOUT EVIDENCE OF CORROSION.
- 10 IF TERMINALS DO NOT EXTEND BELOW COMB, THEN COMB SHALL BE
PARTIALLY RETRACTED, BEFORE INSERTING CONNECTOR INTO THE PC
BOARD.

STANDARD 	5555387-2
ORIENTATION	PART NUMBER

THIS DRAWING IS A CONTROLLED DOCUMENT.		DIN B. MCMASTER 25AUG05	Tyco Electronics Corporation Harrisburg, PA 17105-3608	
DIMENSIONS: INCHES		CHK W. MILLHIMES 25AUG05	NAME RECEPTACLE ASSEMBLY, SHIELDED, 50 POSITION, SCREW LOCK, RIGHT ANGLE, W/ BOARD LOCK & PANEL MOUNTING, CHAMP	
TOLERANCES UNLESS OTHERWISE SPECIFIED:		APVD W. MILLHIMES 25AUG05	SIZE CAGE CODE DRAWING NO A1 00779 C=5555387	
		PRODUCT SPEC — APPLICATION SPEC —	RESTRICTED TO —	
MATERIAL 	FINISH 	WEIGHT —	SCALE 4:1	
CUSTOMER DRAWING		SHEET 1 of 1 REV B		