



Chipsmall Limited consists of a professional team with an average of over 10 year of expertise in the distribution of electronic components. Based in Hongkong, we have already established firm and mutual-benefit business relationships with customers from,Europe,America and south Asia,supplying obsolete and hard-to-find components to meet their specific needs.

With the principle of “Quality Parts,Customers Priority,Honest Operation,and Considerate Service”,our business mainly focus on the distribution of electronic components. Line cards we deal with include Microchip,ALPS,ROHM,Xilinx,Pulse,ON,Everlight and Freescale. Main products comprise IC,Modules,Potentiometer,IC Socket,Relay,Connector.Our parts cover such applications as commercial,industrial, and automotives areas.

We are looking forward to setting up business relationship with you and hope to provide you with the best service and solution. Let us make a better world for our industry!



## Contact us

Tel: +86-755-8981 8866 Fax: +86-755-8427 6832

Email & Skype: info@chipsmall.com Web: www.chipsmall.com

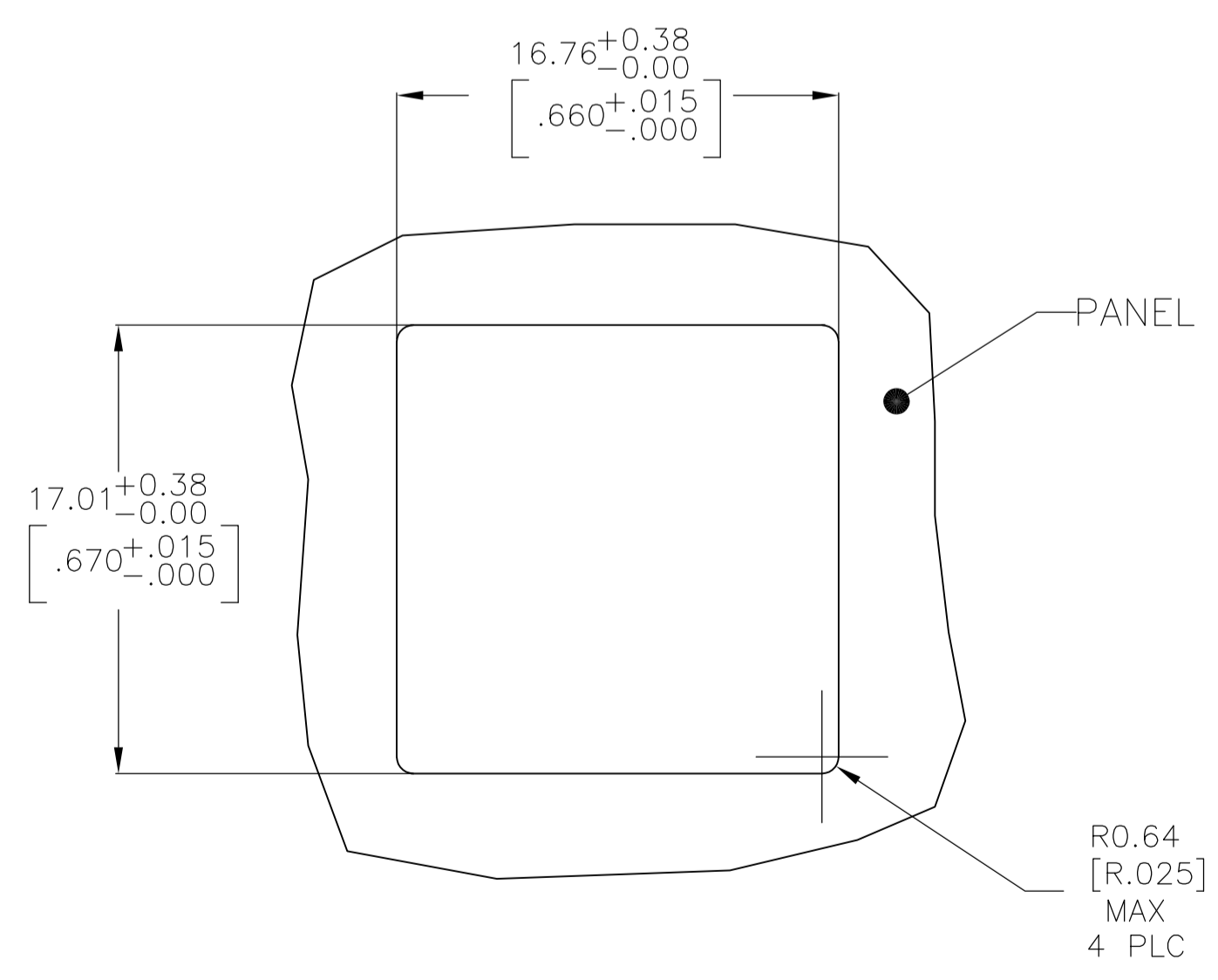
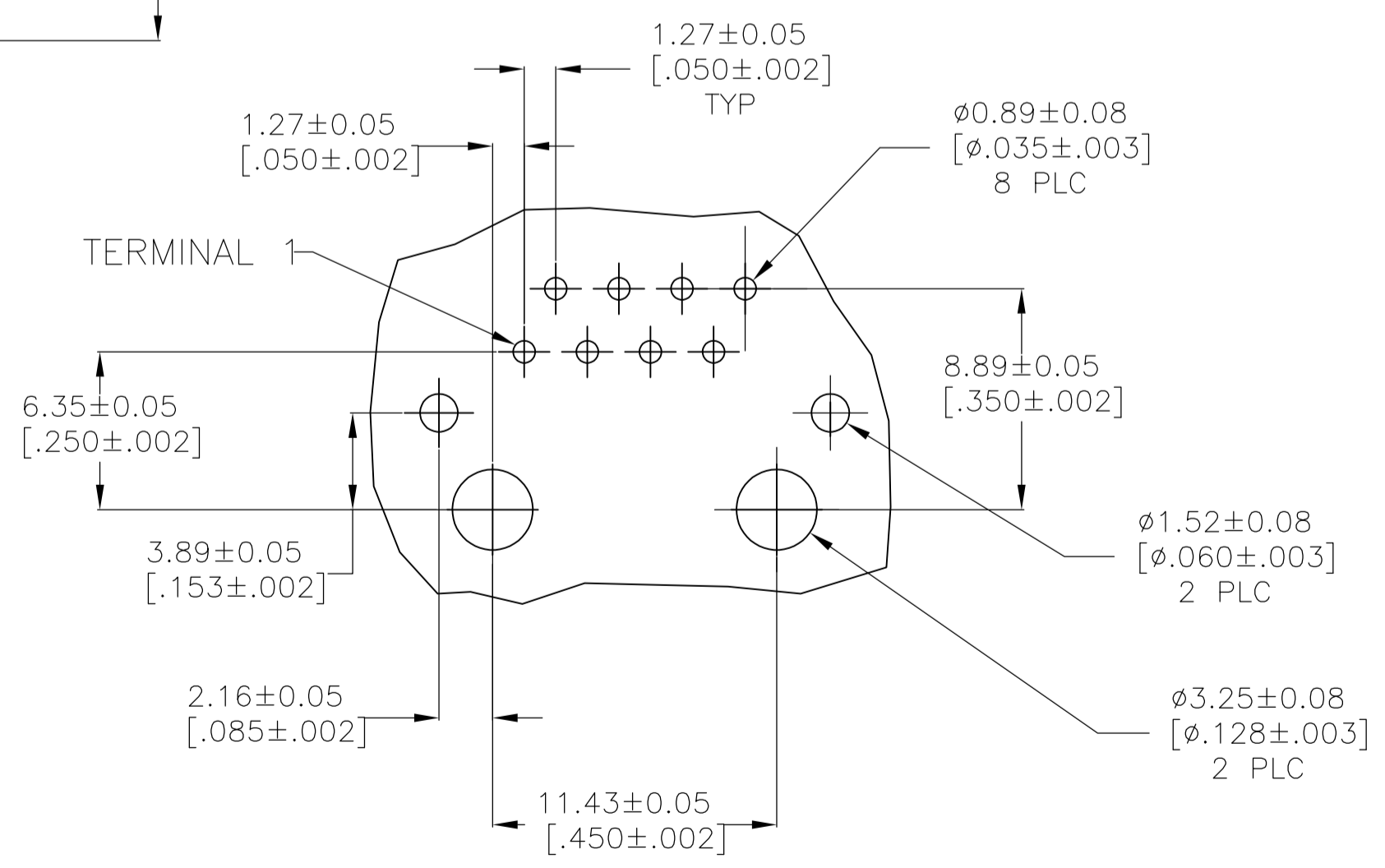
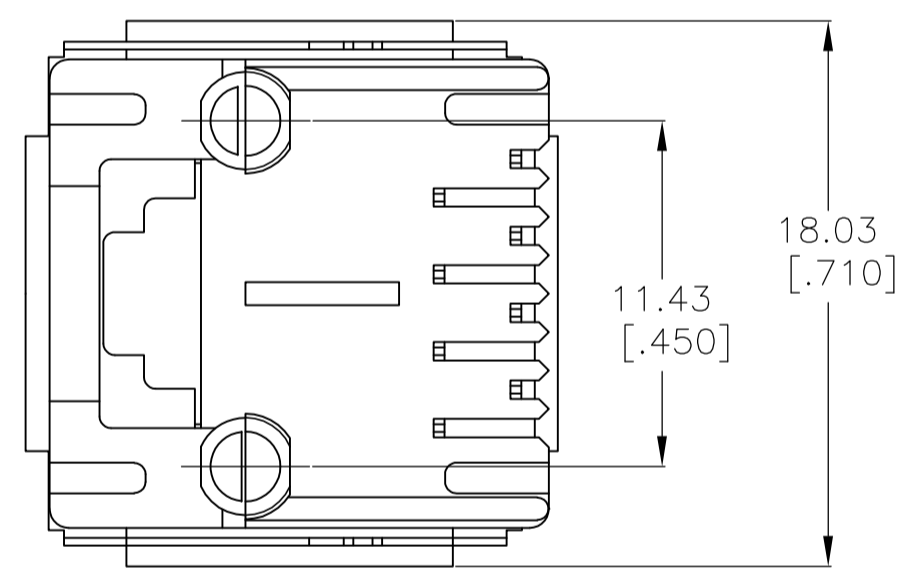
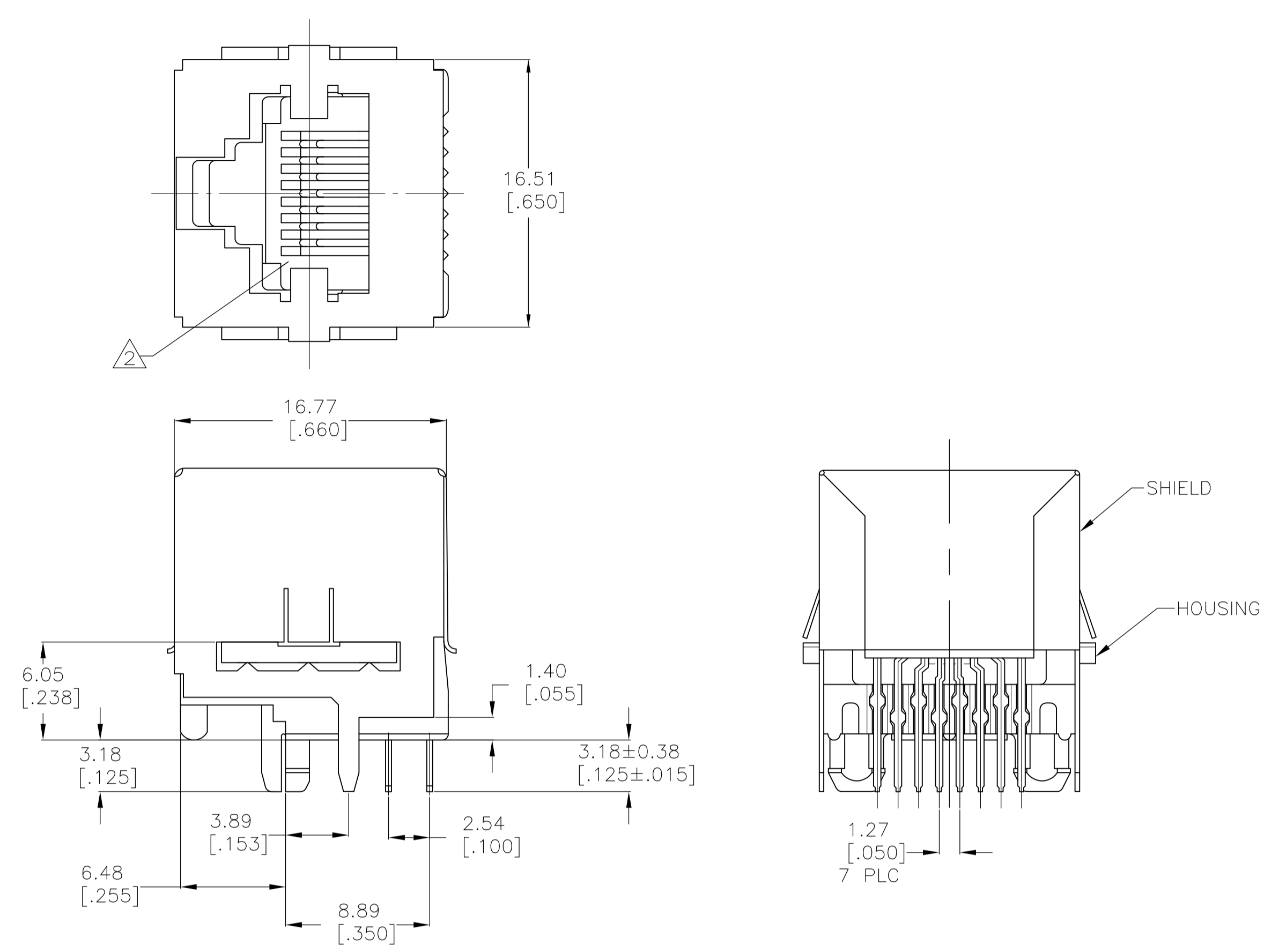
Address: A1208, Overseas Decoration Building, #122 Zhenhua RD., Futian, Shenzhen, China



- MATERIAL:  
 HOUSING - POLYESTER MOLDING COMPOUND, UL 94-VO, COLOR: BLACK  
 TERMINALS - 0.35[.0138] THICK PHOS BRONZE PLATED WITH 1.27 $\mu$ m[.000050] MIN THICK GOLD IN LOCALIZED AREA AND 3.81 $\mu$ m[.000150] MIN THICK MATTE TIN IN SOLDER AREA OVER 1.27 $\mu$ m[.000050] MIN THICK NICKEL UNDERPLATE  
 SHIELD - COPPER ZINC ALLOY PLATED WITH 3.0 $\mu$ m[.000120] MIN THICK REFLOWED TIN.

2 CAVITY CONFORMS TO FCC RULES AND REGULATIONS PART 68 AND REA BULLETIN 345-81, PE-76 SPECIFICATION FOR MODULAR TELEPHONE HARDWARE.

3. BULK PACKAGED IN A TRAY



5557484-1  
PART NO

THIS DRAWING IS A CONTROLLED DOCUMENT.		DIN G. ATTADIA - 10JUN2005		STE TE Connectivity	
DIMENSIONS: mm [INCHES]		CHK J. WESTMAN 10JUN2005		NAME	
TOLERANCES UNLESS OTHERWISE SPECIFIED:		APVD S. FLICKINGER 10JUN2005		MODULAR JACK ASSEMBLY, TOP ENTRY, 8 POSITION, FLANGELESS, SHIELDED, WITH PANEL STOPS, PANEL & PCB GROUNDS	
0 PLC ± -	1 PLC ± -	PRODUCT SPEC		108-1163	
2 PLC ± -	3 PLC ± 0.13[.005]	APPLICATION SPEC		114-2048	
4 PLC ± -	ANGLES ± -	SIZE		CAGE CODE DRAWING NO RESTRICTED TO	
MATERIAL SEE NOTE 1	FINISH SEE NOTE 1	WEIGHT		A1 00779 5557484	
CUSTOMER DRAWING		SCALE 4:1		SHEET 1 OF 1 REV D1	