



Chipsmall Limited consists of a professional team with an average of over 10 year of expertise in the distribution of electronic components. Based in Hongkong, we have already established firm and mutual-benefit business relationships with customers from,Europe,America and south Asia,supplying obsolete and hard-to-find components to meet their specific needs.

With the principle of “Quality Parts,Customers Priority,Honest Operation,and Considerate Service”,our business mainly focus on the distribution of electronic components. Line cards we deal with include Microchip,ALPS,ROHM,Xilinx,Pulse,ON,Everlight and Freescale. Main products comprise IC,Modules,Potentiometer,IC Socket,Relay,Connector.Our parts cover such applications as commercial,industrial, and automotives areas.

We are looking forward to setting up business relationship with you and hope to provide you with the best service and solution. Let us make a better world for our industry!



## Contact us

Tel: +86-755-8981 8866 Fax: +86-755-8427 6832

Email & Skype: info@chipsmall.com Web: www.chipsmall.com

Address: A1208, Overseas Decoration Building, #122 Zhenhua RD., Futian, Shenzhen, China

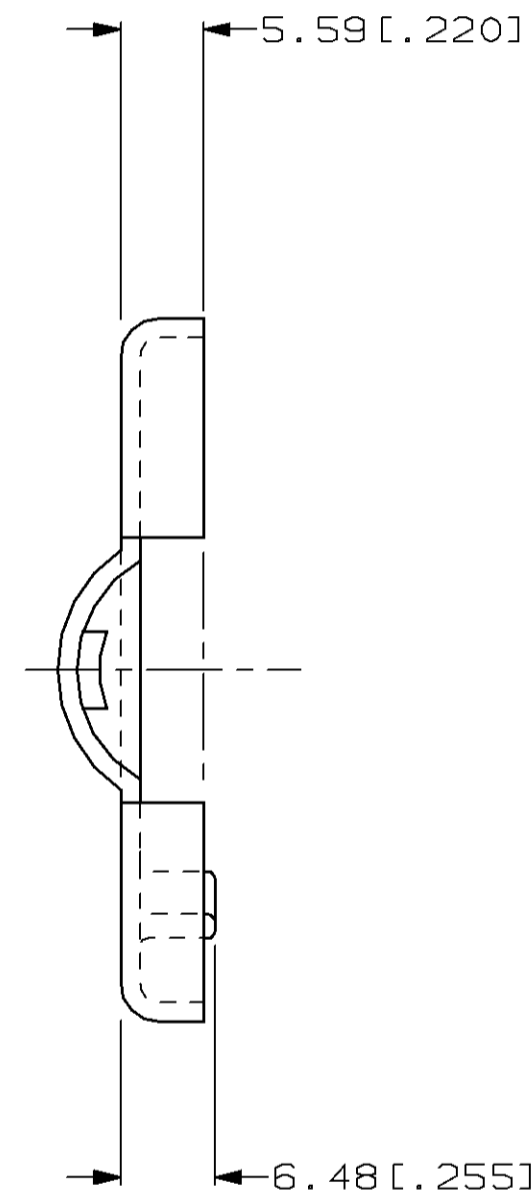
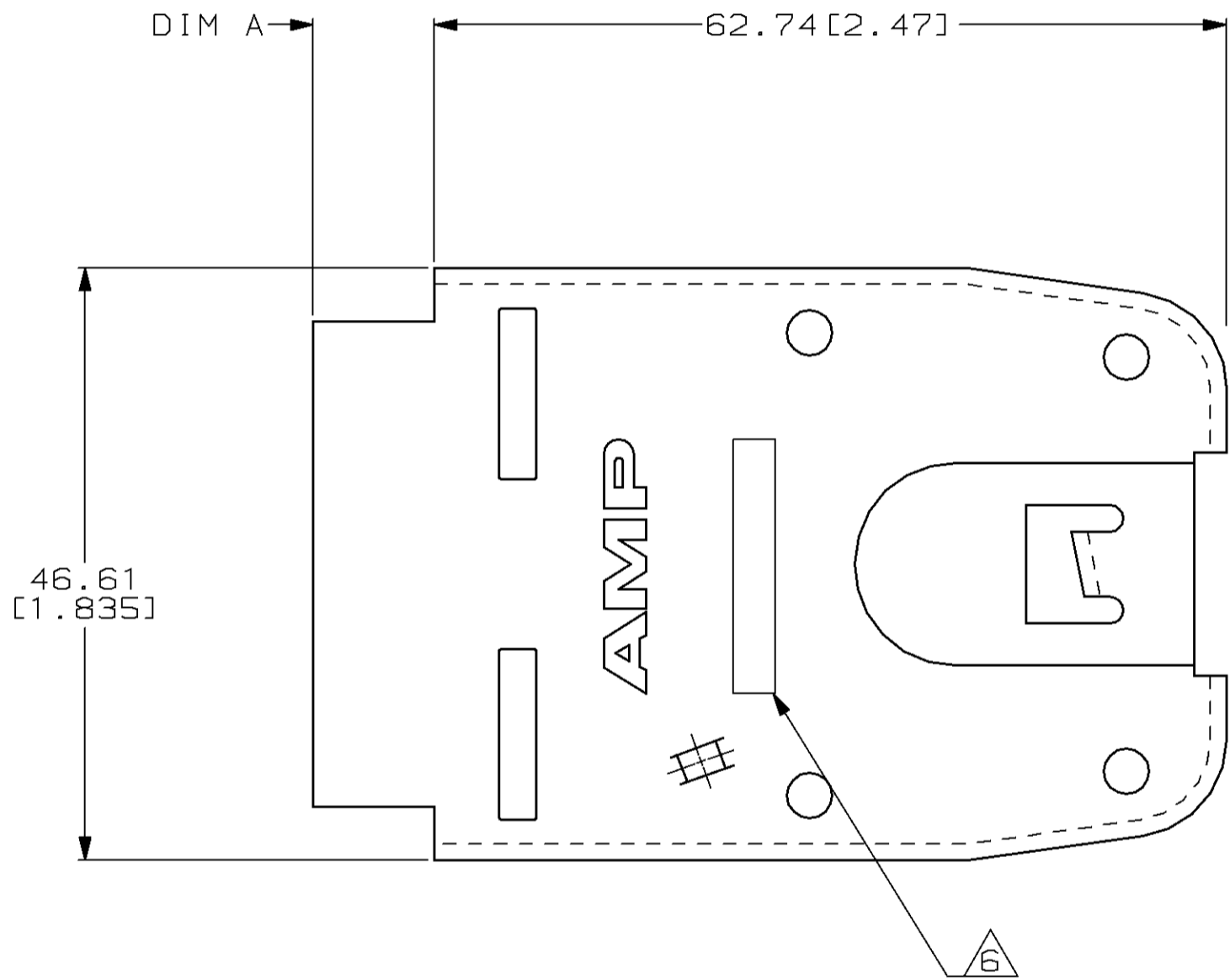


THIS DRAWING IS UNPUBLISHED. RELEASED FOR PUBLICATION  
 © COPYRIGHT 19 BY AMP INCORPORATED. ALL RIGHTS RESERVED.

LOC	DIST	REVISIONS					
AA	28	P	LTR	DESCRIPTION	DATE	DWN	APVD
		E		REV; EC 0210-0020-96	09JUL96	DS	NJ

1. ALL DIMENSIONS ARE MAXIMUM.
2. STRAIN RELIEF TO BE ASSEMBLED WITH  $\varnothing 3.18 [1.25]$  X 12.7 [1.500] LONG SEMI-TUBULAR STEEL RIVETS FURNISHED BY CUSTOMER.
3. ASSEMBLY REQUIRES ONE PIECE OF EITHER:  
 A) 555891-1 AND 555890-1 OR 555890-3 OR  
 B) 555891-2 AND 555890-2 OR 555890-4.
4. RECOMMEND ARMOUR CABLE TO ACCOMMODATE UP TO 8 INSULATED WIRES: 14.3 [9/16] OR 12.7 [1/2] INSIDE DIAMETER APPLIANCE FLEX METAL CONDUIT.
5. STRAIN RELIEF ASSEMBLY CAN BE USED WITH POWER CONNECTOR HOUSING 555930 AND POWER CONNECTOR BASE 555929 OR LINE CONNECTOR HOUSING 555892 AND LINE CONNECTOR COVER 555894.

$\triangle 6$  STRAIN RELIEF IS MARKED AS FOLLOWS:  
 555890-1 IS MARKED 90 1/2  
 555890-2 IS MARKED 90 9/16  
 555890-3 IS MARKED 90 1/2  
 555890-4 IS MARKED 90 9/16



0.64 [.025]	14.3 [9/16] CONDUIT	555890-4
0.64 [.025]	12.7 [1/2] CONDUIT	555890-3
9.91 [.390]	14.3 [9/16] CONDUIT	555890-2
9.91 [.390]	12.7 [1/2] CONDUIT	555890-1
DIM A	DESCRIPTION	PART NO.

DIMENSIONS:		TOLERANCES UNLESS OTHERWISE SPECIFIED:		DWN		AMP		AMP Incorporated	
mm [INCHES]				09JUL96	D. STRAUSSER	09JUL96	N. JONES	Harrisburg, PA 17105-3608	
		0 PLC	±-	APVD	R. BOSSI	12JUL96	R. BOSSI	NAME	
		1 PLC	±-	PRODUCT SPEC					
		2 PLC	±-	APPLICATION SPEC					
		3 PLC	±-	WEIGHT					
		4 PLC	±-	CUSTOMER DRAWING					
		ANGLES	±-	SCALE	A2		00779		C-555890
		FINISH	-	SHEET	2:1		1		OF 1
				REV					E