



Chipsmall Limited consists of a professional team with an average of over 10 year of expertise in the distribution of electronic components. Based in Hongkong, we have already established firm and mutual-benefit business relationships with customers from,Europe,America and south Asia,supplying obsolete and hard-to-find components to meet their specific needs.

With the principle of "Quality Parts,Customers Priority,Honest Operation,and Considerate Service",our business mainly focus on the distribution of electronic components. Line cards we deal with include Microchip,ALPS,ROHM,Xilinx,Pulse,ON,Everlight and Freescale. Main products comprise IC,Modules,Potentiometer,IC Socket,Relay,Connector.Our parts cover such applications as commercial,industrial, and automotives areas.

We are looking forward to setting up business relationship with you and hope to provide you with the best service and solution. Let us make a better world for our industry!



Contact us

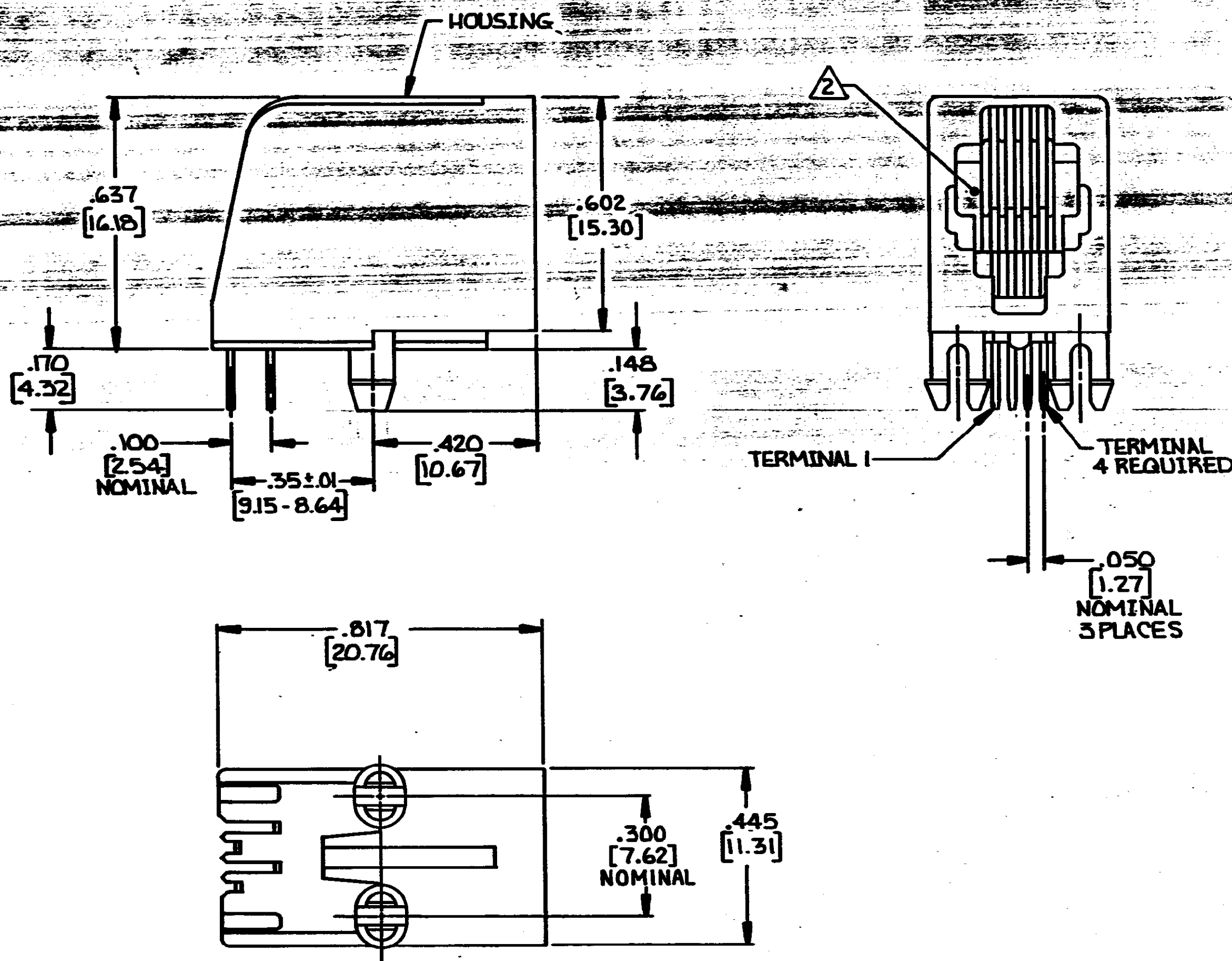
Tel: +86-755-8981 8866 Fax: +86-755-8427 6832

Email & Skype: info@chipsmall.com Web: www.chipsmall.com

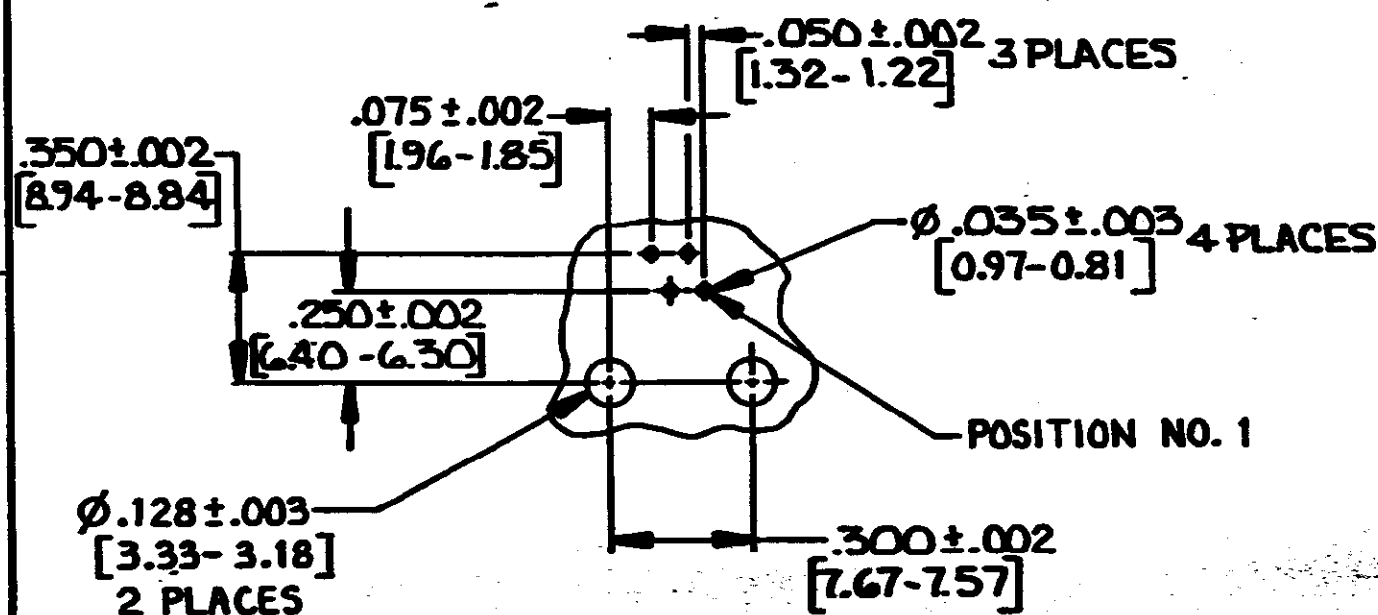
Address: A1208, Overseas Decoration Building, #122 Zhenhua RD., Futian, Shenzhen, China



LOC	DIST	P	F	ZONE	LTR	REVISIONS	DATE	APPD
AA	22					A REVISED; ECN AA-7286	12-12-90	MS AH



- 1 MATERIAL: HOUSING - PBT POLYESTER, BLACK. TERMINALS - .014 [0.36] THICK PHOS-BRONZE PLATED WITH .000050 [1.27μm] THICK HARD GOLD IN LOCALIZED GOLD PLATE AREA AND .000150 [3.81μm] THICK TIN LEAD IN SOLDER AREA OVER .000050 [1.27μm] THICK NICKEL UNDERPLATE.
- 2 CAVITY CONFORMS TO FCC RULES AND REGULATIONS PART 68 AND REA BULLETIN 345-81 PE 76 SPECIFICATION FOR MODULAR TELEPHONE HARDWARE.
- 3 ALL DIMENSIONS SHOWN ARE MAXIMUM UNLESS OTHERWISE SPECIFIED.
- 4 DIMENSIONS SHOWN IN BRACKETS [] ARE IN MILLIMETERS.



SUGGESTED PRINTED CIRCUIT BOARD MOUNTING HOLE LAYOUT
VIEW SHOWN AS CIRCUIT SIDE OF BOARD
SCALE 2:1

DO NOT SCALE PRINT. UNLESS SPECIFIED DIMENSIONS IN INCHES [mm]		DR D. Bucher 3-20-90		555980-1	
TOLERANCES ON:		CHK A. Holt 3-30-90		PART NO	
2 PLC DEC ±		APPD H. Spay 4-2-90		AMP AMP INCORPORATED Harrisburg, Pa. 17105	
3 PLC DEC ±		APPD O. B. Williams 4-2-90		NAME MODULAR JACK ASSEMBLY, SIDE ENTRY, 4 POSITION, FLANGELESS WITHOUT PANEL STOPS	
ANGLES ±		PRODUCT SPEC 108-1163		SIZE C	
MATERIAL		APPLICATION SPEC 114-2048		FSC# NO 00779	
FINISH		WEIGHT		DRAWING NO 555980	
		SCALE 4:1		SHEET 1 OF 1	