



Chipsmall Limited consists of a professional team with an average of over 10 year of expertise in the distribution of electronic components. Based in Hongkong, we have already established firm and mutual-benefit business relationships with customers from,Europe,America and south Asia,supplying obsolete and hard-to-find components to meet their specific needs.

With the principle of “Quality Parts,Customers Priority,Honest Operation,and Considerate Service”,our business mainly focus on the distribution of electronic components. Line cards we deal with include Microchip,ALPS,ROHM,Xilinx,Pulse,ON,Everlight and Freescale. Main products comprise IC,Modules,Potentiometer,IC Socket,Relay,Connector.Our parts cover such applications as commercial,industrial, and automotives areas.

We are looking forward to setting up business relationship with you and hope to provide you with the best service and solution. Let us make a better world for our industry!



## Contact us

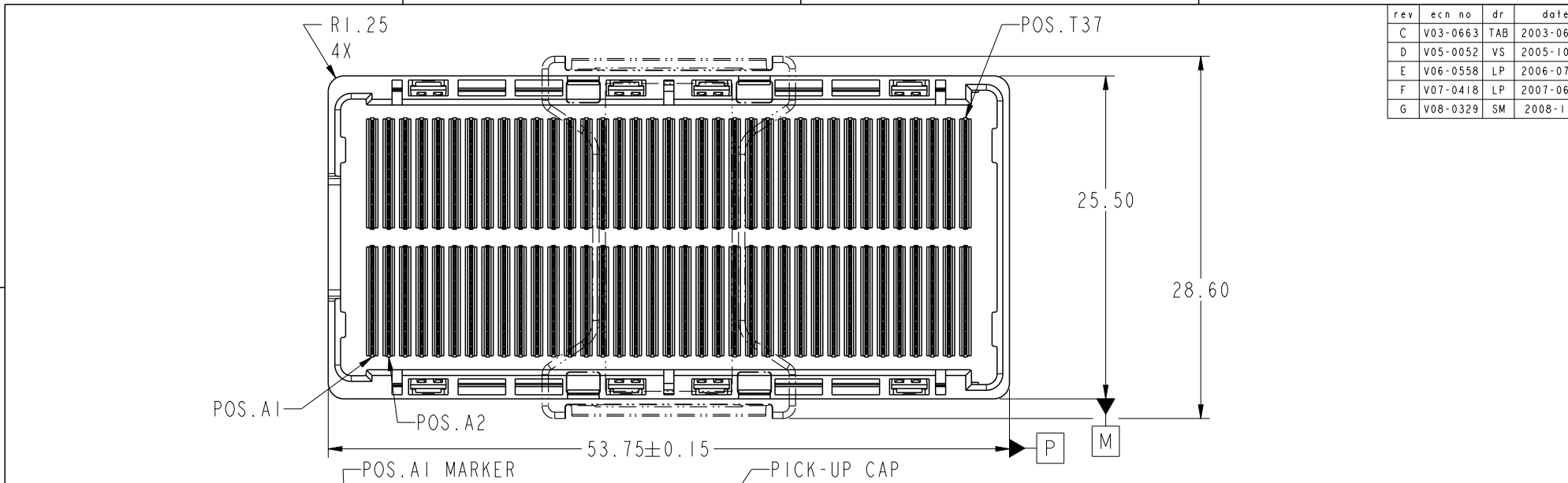
Tel: +86-755-8981 8866 Fax: +86-755-8427 6832

Email & Skype: info@chipsmall.com Web: www.chipsmall.com

Address: A1208, Overseas Decoration Building, #122 Zhenhua RD., Futian, Shenzhen, China



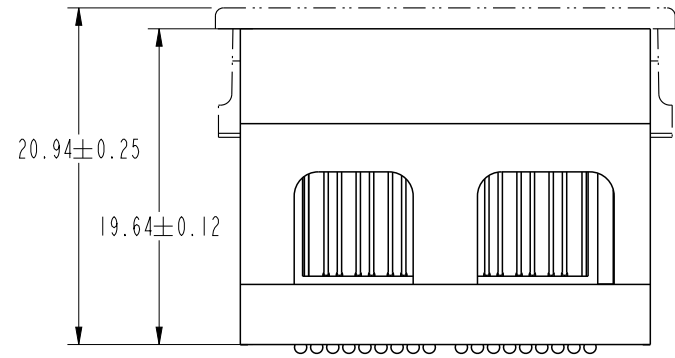
rev	ecn no	dr	date
C	V03-0663	TAB	2003-06-12
D	V05-0052	VS	2005-10-14
E	V06-0558	LP	2006-07-13
F	V07-0418	LP	2007-06-19
G	V08-0329	SM	2008-11-14



0.20

(0.55)

Ø0.76 SOLDER BALLS  
 ⊕ Ø0.30 P M  
 666X  
 SEE NOTE 2



Copyright FCI.

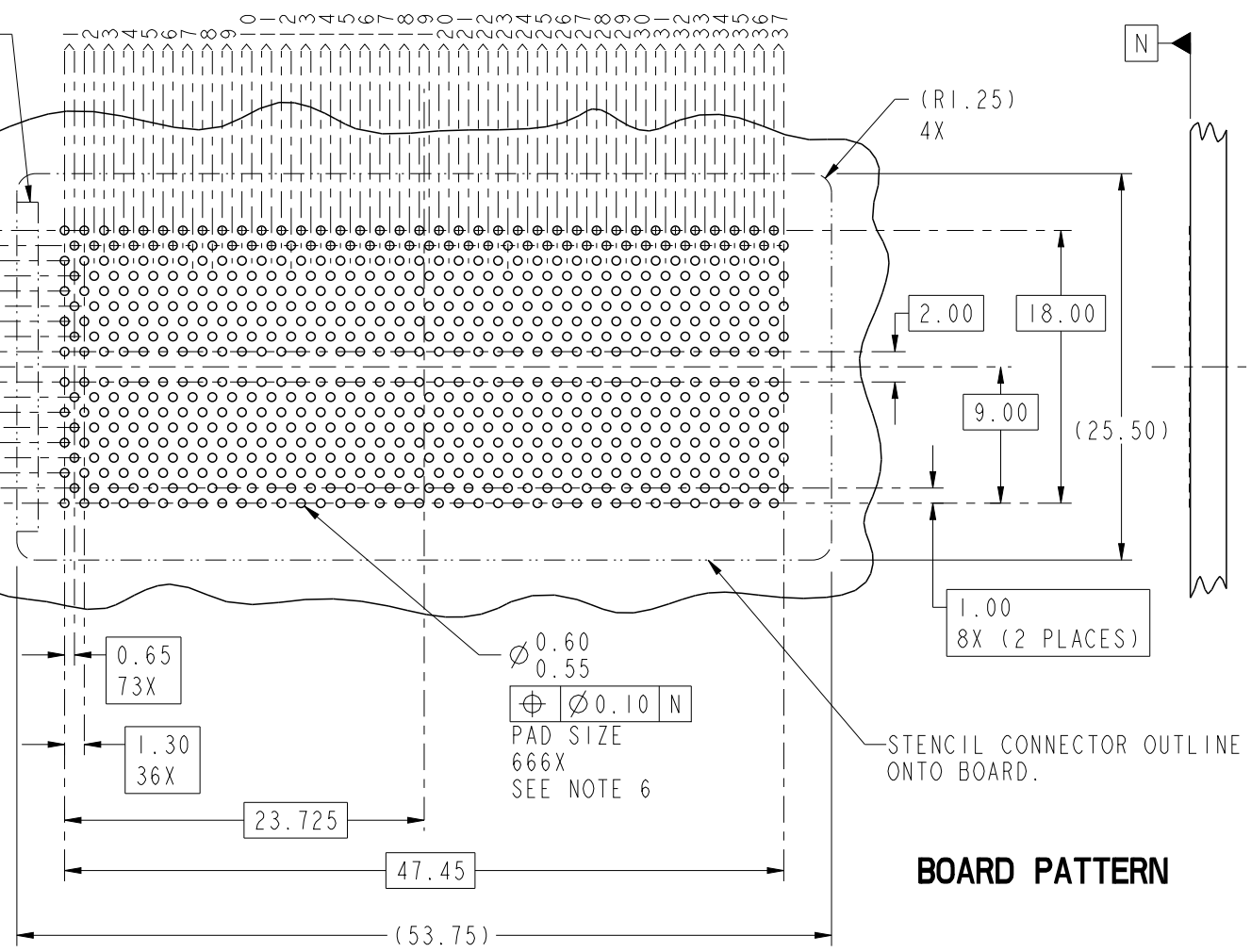
spec ref	*	dr	Bill Lin	2010/02/02	projection 	mm 	size	A4	scale	1:1
tolerance std	ASME Y14.5	eng	Nickor Zuo	2011/05/26			ecn no	ELX-DG-003943-1		
surface	✓	chr	Alex Cao	2011/06/24			rel level	Released		
		appr	Pei-Ming Zheng	2011/06/27	product family	GIG-Array		rev	H	
					title	GIG-Array		dwg no	55727	
						20mm PLUG ASSY. 296 SIG. POS.				
					cat. no.	Product - Customer Drw		sheet	1 of 5	

ProjE File - REV C - 2009-06-09

KEY ORIENTATION SILKSCREEN (OPTIONAL)

④ CONTACTS IN ROWS J & K ARE TIED TOGETHER (COMMONED)

SEE NOTES 4 & 5



$\varnothing 0.60$   
 $\varnothing 0.55$   
 $\varnothing 0.10$  N  
 PAD SIZE  
 666X  
 SEE NOTE 6

**BOARD PATTERN**

spec ref	*	dr	Bill Lin	2010/02/02	projection	mm	size	A4	scale	1:1
tolerance std	TOLERANCES UNLESS OTHERWISE SPECIFIED	eng	Nickor Zuo	2011/05/26			ecn no	ELX-DG-003943-1		
ASME Y14.5		chr	Alex Cao	2011/06/24				rel level	Released	
-		appr	Pei-Ming Zheng	2011/06/27			product family	GIG-Array		
surface		linear		title			GIG-Array 20mm PLUG ASSY. 296 SIG. POS.	dwg no 55727	rev	
-		angular		0°	±2°				www.fci.com	

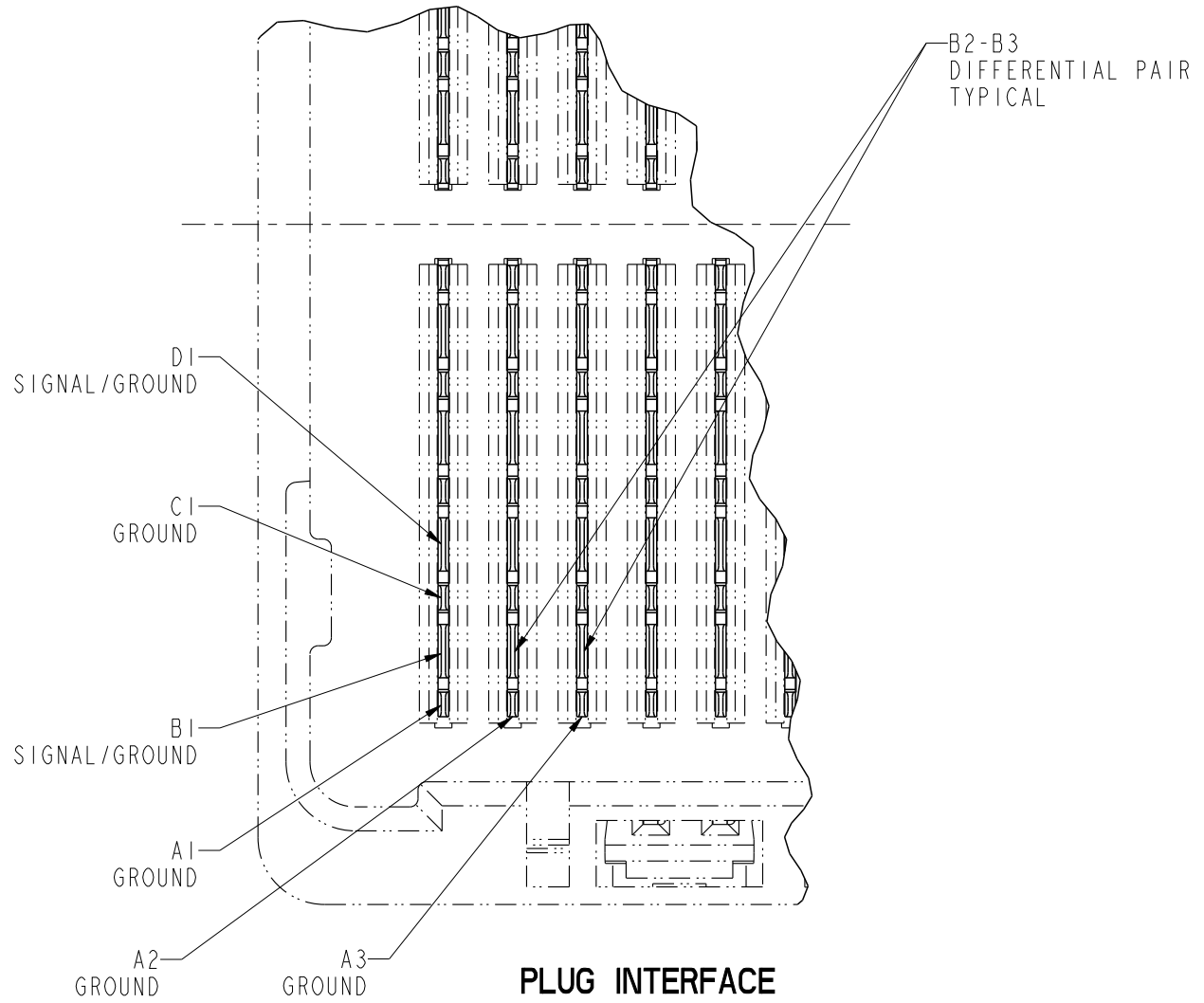
PrdE File - REV C - 2009-06-09



Copyright FCI.



Copyright FCI.

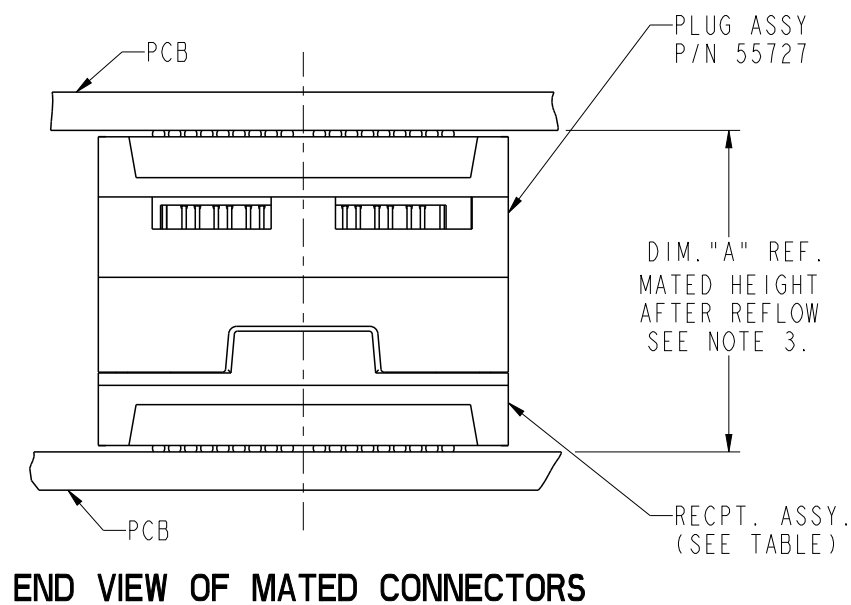
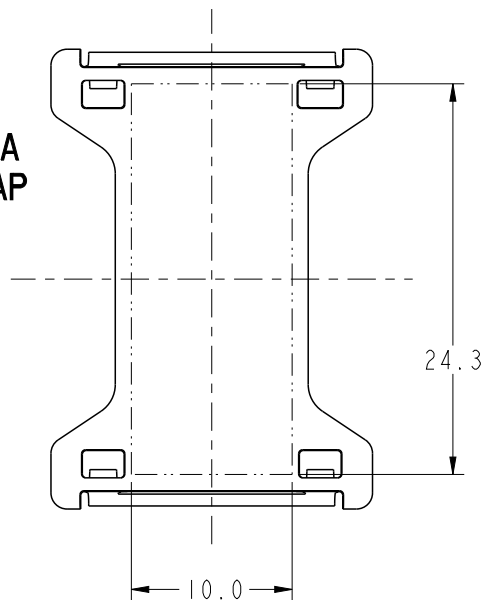


**PLUG INTERFACE DESCRIPTION**

spec ref	*	dr	Bill Lin	2010/02/02	projection	mm ←→	size	A4	scale	1:1
tolerance std	TOLERANCES UNLESS OTHERWISE SPECIFIED	eng	Nickor Zuo	2011/05/26			ecn no	ELX-DG-003943-1		
ASME Y14.5		chr	Alex Cao	2011/06/24				product family	GIG-Array	rel level
-		appr	Pei-Ming Zheng	2011/06/27	rev		55727		H	
surface	✓	linear	0.X	±0.30	www.fci.com	title	GIG-Array		cat. no.	Product - Customer Drw
-			0.XX	±0.10			20mm PLUG ASSY. 296 SIG. POS.			
		angular	0°	±2°						

PreE File - REV C - 2009-06-09

FLAT AREA  
PICK-UP CAP



END VIEW OF MATED CONNECTORS

DIM. "A"	RECPT. ASSY. P/N
25	55701
35	55733

spec ref	*	dr	Bill Lin	2010/02/02	projection	mm	size	A4	scale	1:1
tolerance std	TOLERANCES UNLESS OTHERWISE SPECIFIED	eng	Nickor Zuo	2011/05/26			ecn no	ELX-DG-003943-1		
ASME Y14.5		chr	Alex Cao	2011/06/24				rel level	Released	
-		appr	Pei-Ming Zheng	2011/06/27	product family	GIG-Array		rev	H	
surface	linear	0.X	±0.30		title GIG-Array 20mm PLUG ASSY. 296 SIG. POS.	dwg no 55727				
		0.XX	±0.10							
		0.XXX	±0.05							
-	angular	0°	±2°	www.fci.com	cat. no.	Product - Customer Drw		sheet 4 of 5		

