



Chipsmall Limited consists of a professional team with an average of over 10 year of expertise in the distribution of electronic components. Based in Hongkong, we have already established firm and mutual-benefit business relationships with customers from,Europe,America and south Asia,supplying obsolete and hard-to-find components to meet their specific needs.

With the principle of “Quality Parts,Customers Priority,Honest Operation,and Considerate Service”,our business mainly focus on the distribution of electronic components. Line cards we deal with include Microchip,ALPS,ROHM,Xilinx,Pulse,ON,Everlight and Freescale. Main products comprise IC,Modules,Potentiometer,IC Socket,Relay,Connector.Our parts cover such applications as commercial,industrial, and automotives areas.

We are looking forward to setting up business relationship with you and hope to provide you with the best service and solution. Let us make a better world for our industry!



## Contact us

Tel: +86-755-8981 8866 Fax: +86-755-8427 6832

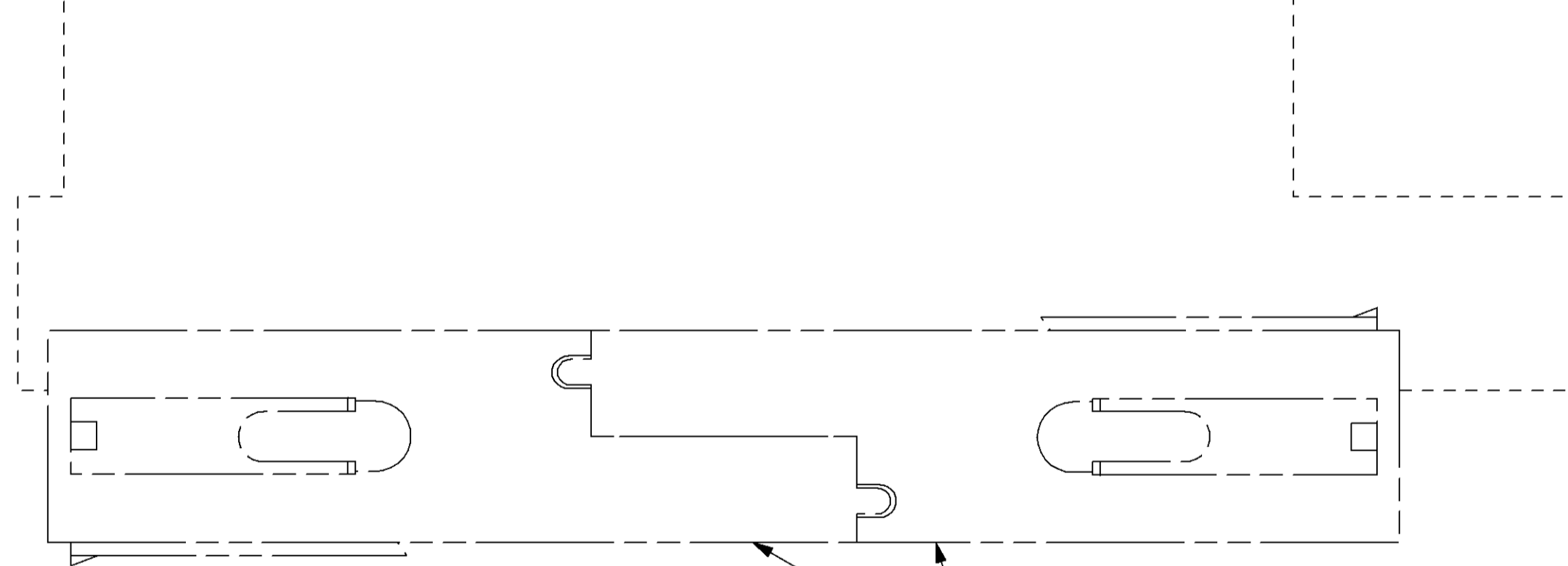
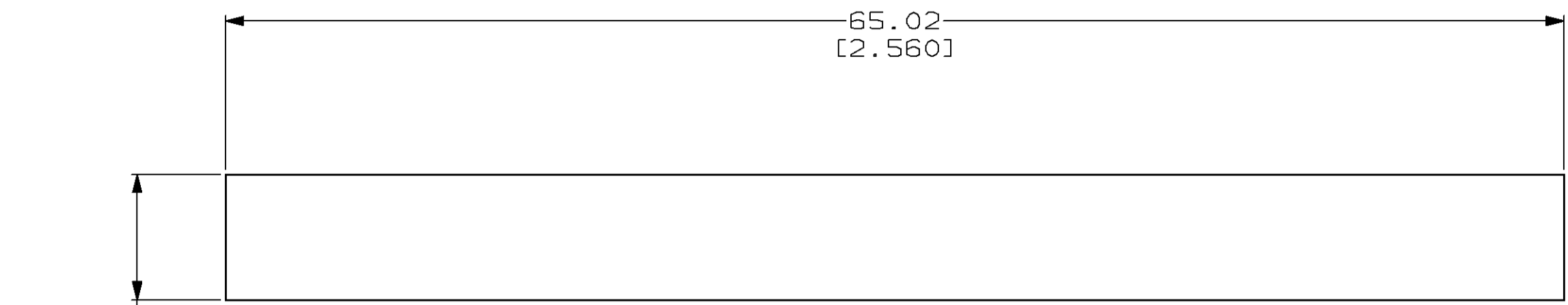
Email & Skype: info@chipsmall.com Web: www.chipsmall.com

Address: A1208, Overseas Decoration Building, #122 Zhenhua RD., Futian, Shenzhen, China



THIS DRAWING IS UNPUBLISHED. RELEASED FOR PUBLICATION  
 BY AMP INCORPORATED. ALL RIGHTS RESERVED.

LOC	DIST	REVISIONS					
		P	LTR	DESCRIPTION	DATE	DWN	APVD
FT	60	B		REDRAWN & REV PER EC 0320-70-97	14 MAR 97	-	-



MATED AND INTERLOCKED HOUSINGS REF

- 1. POLYPHENYLENE OXIDE MOLDING COMPOUND, POLYSTYRENE MODIFIED, BLACK. UL FLAME CLASSIFICATION: 94V-1.
- 2. EXTERNAL LOCKING LATCH USED WITH CONNECTORS FOR EXTRA MATED RETENTION FORCE - APPROXIMATELY 100 LB RETENTION PER EXTERNAL LOCKING LATCH.
- 3. ALL DIMENSIONS SHOWN ARE MAXIMUM UNLESS OTHERWISE SPECIFIED.

557640-1  
 PART NUMBER

THIS DRAWING IS A CONTROLLED DOCUMENT.		DWN	M. BINNER	14 MAR 97	AMP Incorporated Harrisburg, PA 17105-3608							
DIMENSIONS:		CHK	R. STONE	14 MAR 97								
mm [INCHES]		APVD	M. McALONIS	17 MAR 97								
TOLERANCES UNLESS OTHERWISE SPECIFIED: 0 PLC ±- 1 PLC ±- 2 PLC ±- 3 PLC ±- 4 PLC ±- ANGLES ±- FINISH -		NAME	LATCH, EXTERNAL LOCKING, WTW, AMP INNERGY™									
		PRODUCT SPEC	108-1373		SIZE	A2	CAGE CODE	00779	DRAWING NO	C=557640	RESTRICTED TO	-
MATERIAL		APPLICATION SPEC	114-6051		SCALE	4:1		SHEET	1 OF 1		REV	B
		WEIGHT	-		CUSTOMER DRAWING							

557640