



Chipsmall Limited consists of a professional team with an average of over 10 year of expertise in the distribution of electronic components. Based in Hongkong, we have already established firm and mutual-benefit business relationships with customers from,Europe,America and south Asia,supplying obsolete and hard-to-find components to meet their specific needs.

With the principle of “Quality Parts,Customers Priority,Honest Operation,and Considerate Service”,our business mainly focus on the distribution of electronic components. Line cards we deal with include Microchip,ALPS,ROHM,Xilinx,Pulse,ON,Everlight and Freescale. Main products comprise IC,Modules,Potentiometer,IC Socket,Relay,Connector.Our parts cover such applications as commercial,industrial, and automotives areas.

We are looking forward to setting up business relationship with you and hope to provide you with the best service and solution. Let us make a better world for our industry!



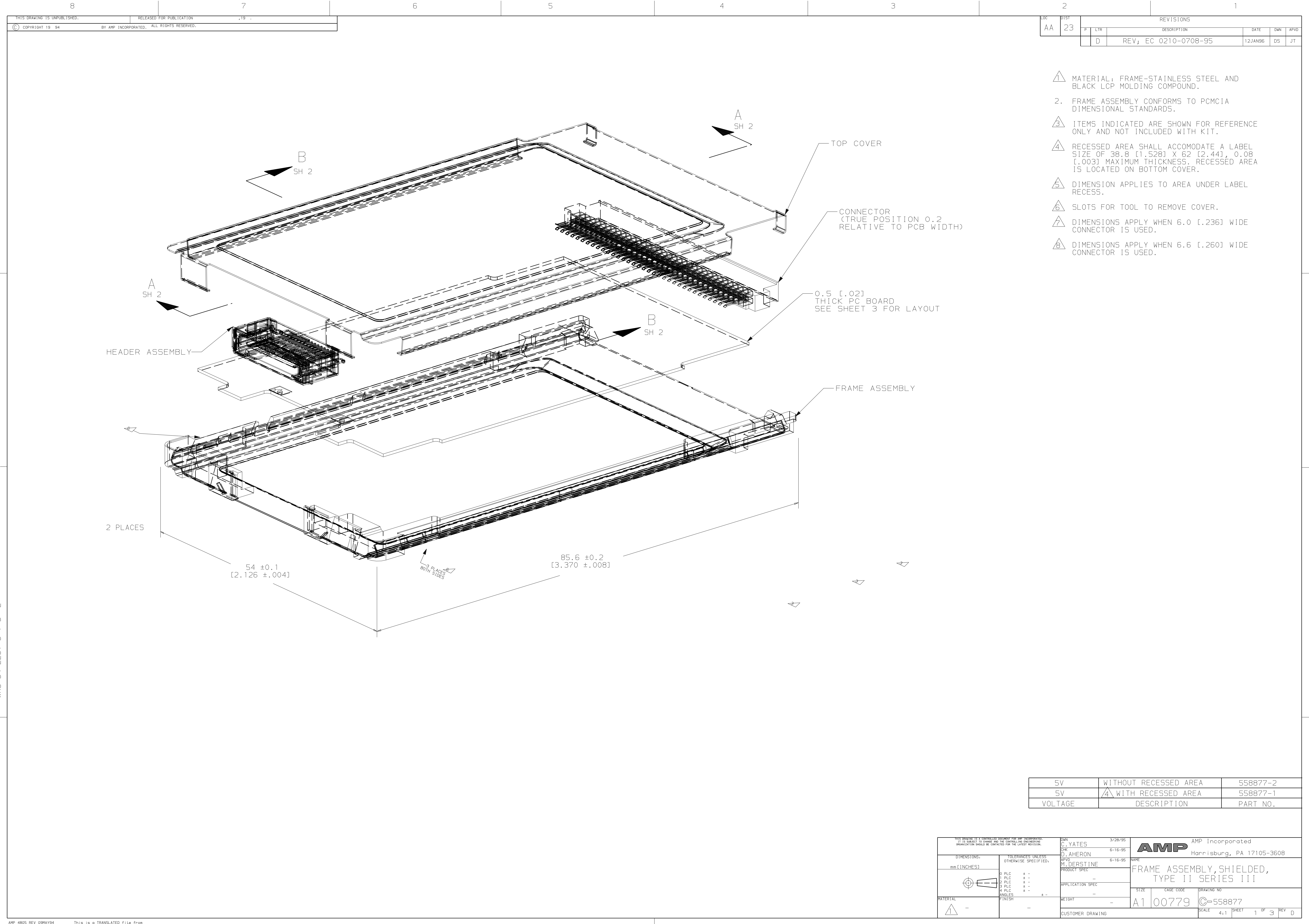
Contact us

Tel: +86-755-8981 8866 Fax: +86-755-8427 6832

Email & Skype: info@chipsmall.com Web: www.chipsmall.com

Address: A1208, Overseas Decoration Building, #122 Zhenhua RD., Futian, Shenzhen, China

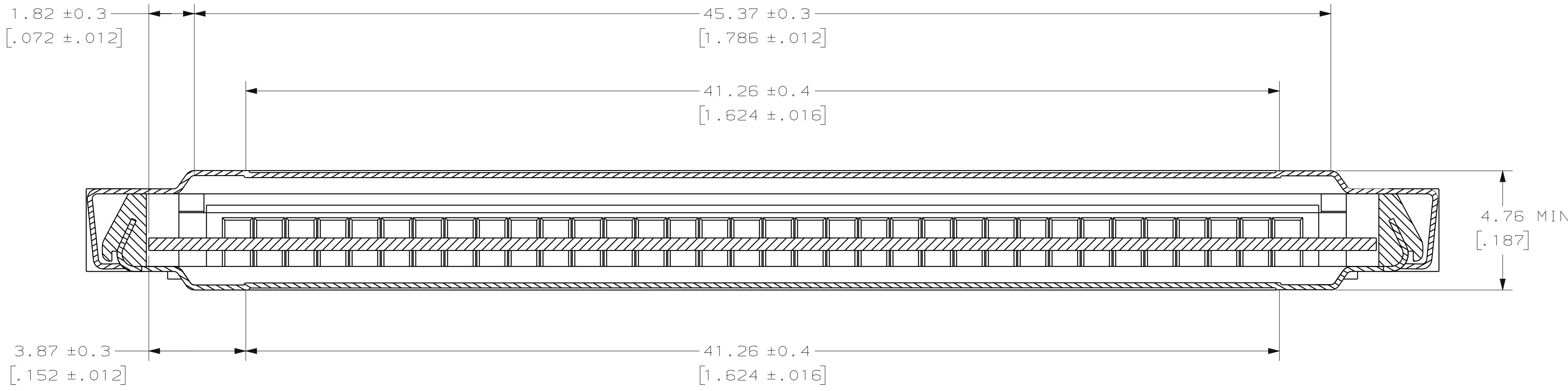




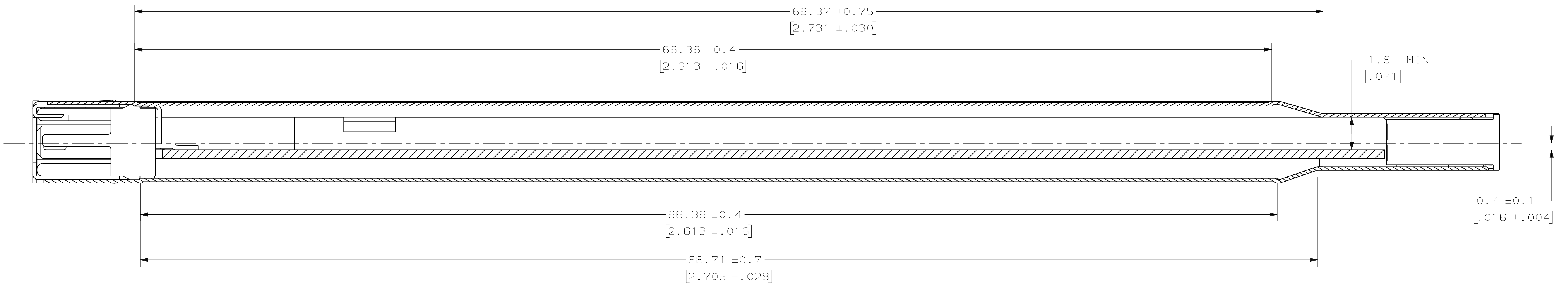
LOC		DIST		REVISIONS				
AA	23	P	LYR	DESCRIPTION	DATE	DWN	APVD	
			D	REV; EC 0210-0708-95	12JAN96	DS	JT	

- 1. MATERIAL: FRAME-STAINLESS STEEL AND BLACK LCP MOLDING COMPOUND.
- 2. FRAME ASSEMBLY CONFORMS TO PCMCIA DIMENSIONAL STANDARDS.
- 3. ITEMS INDICATED ARE SHOWN FOR REFERENCE ONLY AND NOT INCLUDED WITH KIT.
- 4. RECESSED AREA SHALL ACCOMODATE A LABEL SIZE OF 38.8 [1.528] X 62 [2.44], 0.08 [.003] MAXIMUM THICKNESS. RECESSED AREA IS LOCATED ON BOTTOM COVER.
- 5. DIMENSION APPLIES TO AREA UNDER LABEL RECESS.
- 6. SLOTS FOR TOOL TO REMOVE COVER.
- 7. DIMENSIONS APPLY WHEN 6.0 [.236] WIDE CONNECTOR IS USED.
- 8. DIMENSIONS APPLY WHEN 6.6 [.260] WIDE CONNECTOR IS USED.

5V	WITHOUT RECESSED AREA	558877-2
5V	WITH RECESSED AREA	558877-1
VOLTAGE	DESCRIPTION	PART NO.



SECTION B-B
SCALE 8:1
ROTATED



SECTION A-A
SCALE 8:1
ROTATED

WAS 94-2281-9-1 & -2

A

THIS DRAWING IS A CONTROLLED DOCUMENT FOR AMP INCORPORATED. IT IS SUBJECT TO CHANGE AND THE CONTROLLING ENGINEERING ORGANIZATION SHOULD BE CONTACTED FOR THE LATEST NOTATION.

DIMENSIONS:
mm [INCHES]

0 PLC
1 PLC
2 PLC
3 PLC
4 PLC
ANGLES
FINISH

± -
± -
± -
± -
± -
° -
-

MATERIAL

-

DWN
C.YATES
CHK
D.AHERON
APVD
M.DERSTINE
PRODUCT SPEC

3/28/95
6-16-95
6-16-95
NAME

AMP Incorporated
Harrisburg, PA 17105-3608

FRAME ASSEMBLY, SHIELDED,
TYPE II SERIES III

SIZE CASE CODE DRAWING NO

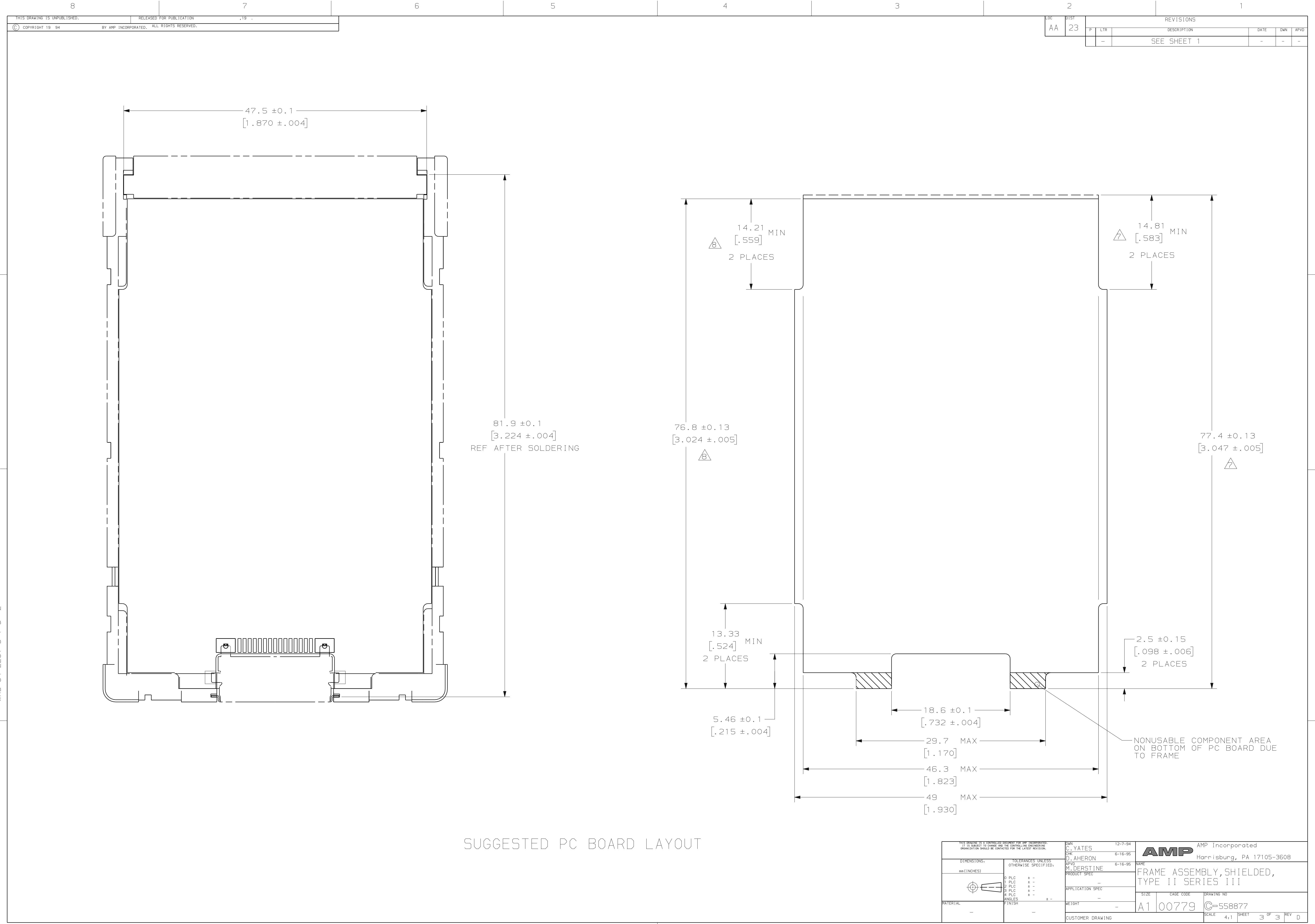
A1 00779 558877

WEIGHT

-

CUSTOMER DRAWING

SCALE 4:1 SHEET 2 OF 3 REV D



2		1								
LOC	DIST	REVISIONS								
AA	23	P	LTR	DESCRIPTION				DATE	DWN	APVD
			-	SEE SHEET 1				-	-	-

THIS DRAWING IS A CONTROLLED DOCUMENT FOR AMP INCORPORATED. IT IS SUBJECT TO CHANGE AND THE CONTROLLING ENGINEERING ORGANIZATION SHOULD BE CONTACTED FOR THE LATEST EDITION.		DWN C. YATES 6-16-95		12-7-94	
DIMENSIONS: mm (INCHES)		CHK D. AHERON 6-16-95		NAME M. DERSTINE 6-16-95	
TOLERANCES UNLESS OTHERWISE SPECIFIED:		0 PLC ± -		PRODUCT SPEC	
1 PLC ± -		2 PLC ± -		APPLICATION SPEC	
3 PLC ± -		4 PLC ± -		WEIGHT	
ANGLES		8 -		CUSTOMER DRAWING	
MATERIAL		FINISH		SCALE	
-		-		4:1	
				SHEET	
				3 OF 3	
				REV	
				D	