



Chipsmall Limited consists of a professional team with an average of over 10 year of expertise in the distribution of electronic components. Based in Hongkong, we have already established firm and mutual-benefit business relationships with customers from,Europe,America and south Asia,supplying obsolete and hard-to-find components to meet their specific needs.

With the principle of “Quality Parts,Customers Priority,Honest Operation,and Considerate Service”,our business mainly focus on the distribution of electronic components. Line cards we deal with include Microchip,ALPS,ROHM,Xilinx,Pulse,ON,Everlight and Freescale. Main products comprise IC,Modules,Potentiometer,IC Socket,Relay,Connector.Our parts cover such applications as commercial,industrial, and automotives areas.

We are looking forward to setting up business relationship with you and hope to provide you with the best service and solution. Let us make a better world for our industry!



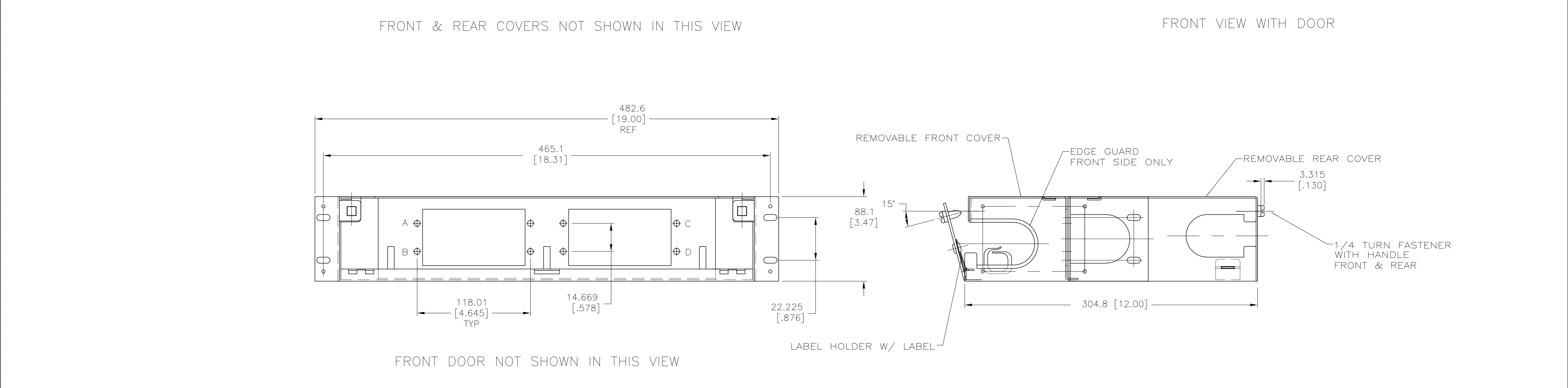
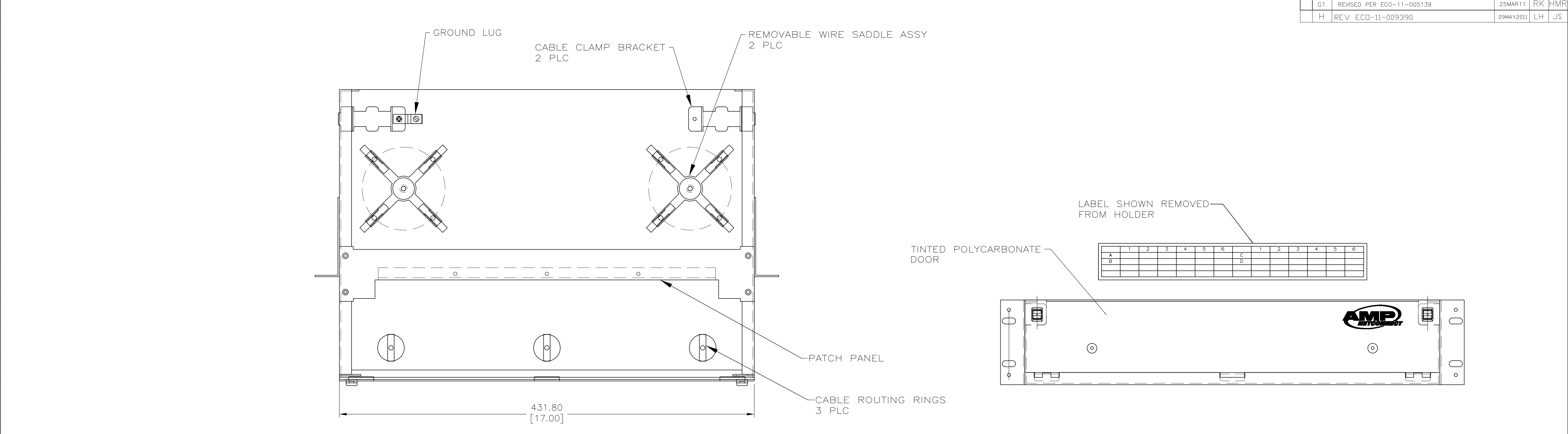
Contact us

Tel: +86-755-8981 8866 Fax: +86-755-8427 6832

Email & Skype: info@chipsmall.com Web: www.chipsmall.com

Address: A1208, Overseas Decoration Building, #122 Zhenhua RD., Futian, Shenzhen, China





- FOUR (4) #12-24UNC-2A SCREWS ARE PROVIDED IN BAG INSIDE THE ENCLOSURE
- THE FOLLOWING ITEMS ARE BAGGED AND PLACED IN THE ENCLOSURE:
 - 24-LINE LABEL, QTY. 1
 - WARNING LABEL, QTY. 2
 - QUARTER-TURN FASTENER HANDLE, QTY. 4
 - QUARTER-TURN FASTENER HANDLE INSTALLATION INSTRUCTION SHEET, QTY. 1

	BLACK	559542-2
OBSOLETE	LT ALMOND	559542-1
	FINISH COLOR	PART NO

THIS DRAWING IS A CONTROLLED DOCUMENT.		DWN W.J. SOURBEER 10NOV00	TE Connectivity	
DIMENSIONS: mm		CHK J. HOFFER 10NOV00	NAME	
TOLERANCES UNLESS OTHERWISE SPECIFIED:		APVD J. HOFFER 10NOV00	RACK MOUNTED, NERC 24/PORT w/ CABLE BRACKET	
0 PLC ± -		PRODUCT SPEC	-	
1 PLC ± -		APPLICATION SPEC	-	
2 PLC ± 0.8[.03]		WEIGHT	-	
3 PLC ± 0.25[.010]		SIZE	A1 00779	
4 PLC ± -		CAGE CODE	559542	
ANGLES		DRAWING NO	RESTRICTED TO	
FINISH		16GAUGE STEEL	-	
CUSTOMER DRAWING		SCALE	1:2	
		SHEET	1 OF 1	
		REV	H	