



Chipsmall Limited consists of a professional team with an average of over 10 year of expertise in the distribution of electronic components. Based in Hongkong, we have already established firm and mutual-benefit business relationships with customers from,Europe,America and south Asia,supplying obsolete and hard-to-find components to meet their specific needs.

With the principle of "Quality Parts,Customers Priority,Honest Operation,and Considerate Service",our business mainly focus on the distribution of electronic components. Line cards we deal with include Microchip,ALPS,ROHM,Xilinx,Pulse,ON,Everlight and Freescale. Main products comprise IC,Modules,Potentiometer,IC Socket,Relay,Connector.Our parts cover such applications as commercial,industrial, and automotives areas.

We are looking forward to setting up business relationship with you and hope to provide you with the best service and solution. Let us make a better world for our industry!



## Contact us

Tel: +86-755-8981 8866 Fax: +86-755-8427 6832

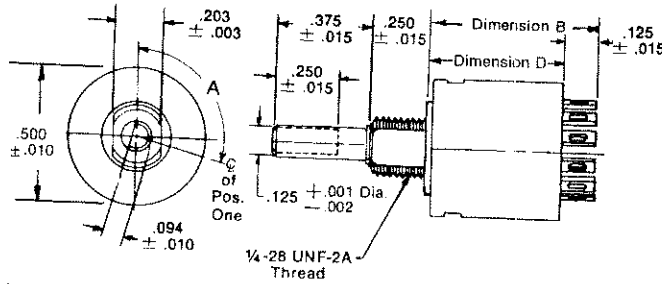
Email & Skype: info@chipsmall.com Web: www.chipsmall.com

Address: A1208, Overseas Decoration Building, #122 Zhenhua RD., Futian, Shenzhen, China



SERIES 55, 56

### Standard



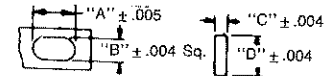
Stop pin holes are not shown in drawing. They are located between adjacent switch positions. Switch can also be made with bushing flats at 90° to those shown here. Available by special order.

Angle Of Throw	30°	36°
Angle 'A'	105°	108°

Series	55	56
Dimension 'B'	.635 ± .020	.480 ± .020
Dimension 'D'	.510	.355

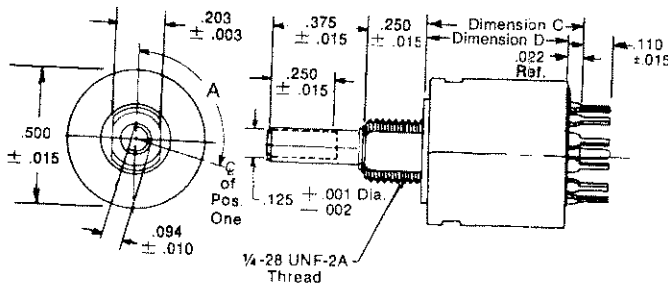
### Rear Views Shown With Circuit Diagrams

#### SOLDER LUG TERMINAL DETAIL



Angle	30°		36°	
	Term.	Common	Term.	Common
"A"	.063	WIRE WRAP	.068	WIRE WRAP
"B"	.020	STYLE .036	.036	STYLE .036
"C"	.016	.062 DIA. ± .001	.020	.062 DIA. ± .001
"D"	.046	.062	.062	.062

### PC Mountable



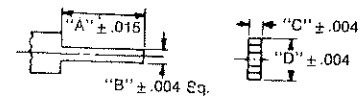
Stop pin holes are not shown in drawing. They are located between adjacent switch positions. Switch can also be made with bushing flats at 90° to those shown here. Available by special order.

Angle Of Throw	30°	36°
Angle 'A'	105°	108°

Series	55	56
Dimension 'C'	.532 ± .020	.377 ± .020
Dimension 'D'	.510	.355

### Rear Views Shown With Circuit Diagrams

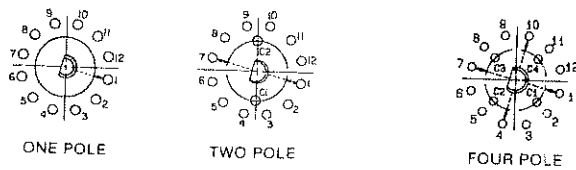
#### PC TERMINAL DETAIL



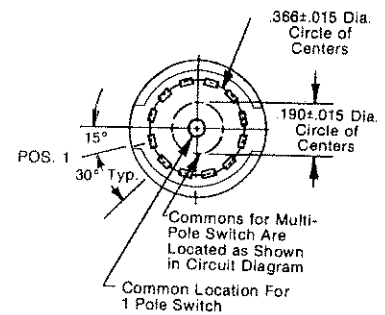
Angle	30°		36°	
	Term.	Common	Term.	Common
"A"	.110	RND. PIN	.110	RND. PIN
"B"	.016	.020	.020	.020
"C"	.016	.025 DIA. ± .002	.020	.025 DIA. ± .002
"D"	.046	.062	.062	.062

### Circuit Diagrams

Circuit as viewed from shaft end.

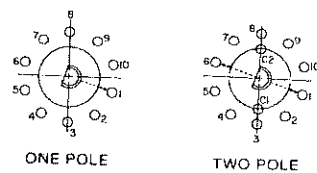


### Rear View

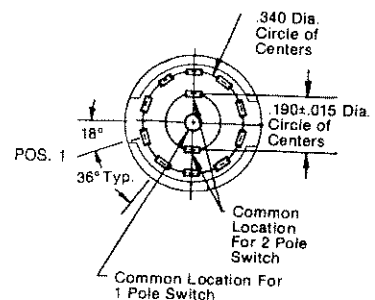


30° ANGLE OF THROW

Circuit as viewed from shaft end.



### Rear View

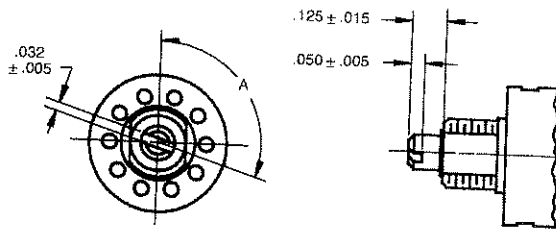


36° ANGLE OF THROW

# 1/2" Diameter, 200 mA Rotary Switches

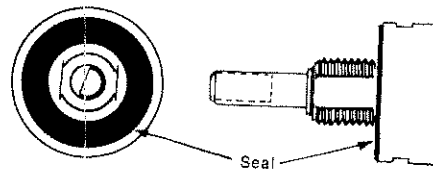
## Screwdriver Actuation

All styles and angles of throw are available with a screwdriver slotted shaft. Angle A and other dimensions are shown in the appropriate switch drawing.



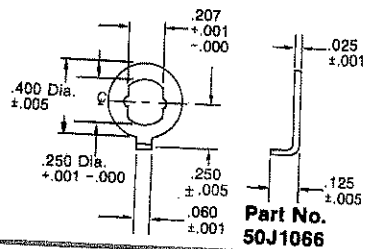
## Shaft and Panel Seal

Panel is sealed by an "O" ring at the base of bushing. Shaft is sealed by an "O" ring inside the bushing. After the switch is mounted, seals do not alter the dimensions of the unsealed style.



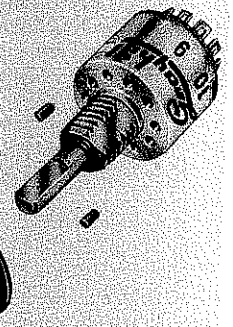
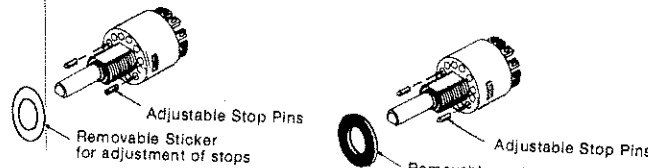
## Non-Turn Washer

This washer is sold *only* when accompanied by an order for a like number of switches. Washer is 302 stainless steel.



## Adjustable Stop Switches

Two stop pins and an adhesive backed sticker or seal washer are provided. Sticker is temporarily removed to locate stop pins as desired to limit the shaft rotation. All dimensions are identical to the fixed stop switch counterpart.



## Standard Options

Intermixing of Shorting and Non-Shorting Contacts; and RFI Grounding. Not available thru distributors. See Options, pages E-9 and E-10. See also Keylocks and features charted on E-7.

## Electrical Ratings

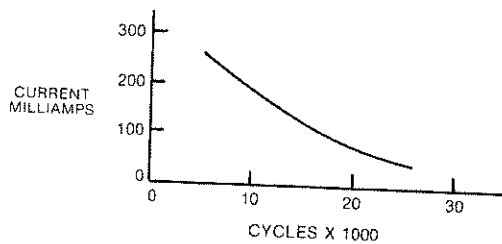


Chart shown for non-shorting contacts (break before make)  
**Voltage:** 115 Vac or 30 Vdc, resistive load.

One cycle is 360° rotation and a return through all switch positions to the starting position. The data for the curve was measured at sea level, 25°C, and 68% humidity with the following life limiting criteria.

The life limiting criteria for the curve are as follows:

**Contact Resistance:** Standard style: 100 milliohms maximum (15 milliohms initially)

**Insulation Resistance and Voltage Breakdown:** 10,000 megohms minimum (50,000 megohms initially) and 600 Vac minimum, respectively, between mutually insulated parts.

**Life Expectancy:** If the life limiting criteria of the application are less critical than above or if elevated temperatures or reduced pressures are involved, Grayhill Incorporated can predict the life of the switch for the application.

**Contact Carry Rating:** Switch will carry 6 amperes with a maximum contact temperature rise of 20°C.

Switch meets the following requirements of MIL-S-3786:

- High and medium shock
- Vibration (10 to 2,000 Hz)
- Thermal Shock (-65° to 125°C)
- Salt Spray
- Explosion
- Stop Strength (7.5 in-lbs. minimum (.85 N-m))
- Terminal Strength
- Sealed styles withstand water pressure of 15 PSI minimum (103 KPa) without leakage.

## Additional Characteristics

**Contact Type and Forces:** Shorting or non-shorting wiping contacts with over 25 grams of contact force.

**Shaft Flat Orientation:** Flat opposite contacting position of pole number one (see circuit diagram).

**Terminals:** Switches are provided with the full circle of terminals, regardless of the number of active positions.

**Stop Strength:** 7.5 pound-inches minimum.

**Rotational Torque:** 3.5 to 7.5 ounce-inches (21-53 mN-m) depending on the number of poles.

**Bushing Mounting:** Required for switches with stops and recommended for switches without stops.

## Materials and Finishes

**Housing:** Zinc die cast, zinc plated with chromate treatment.

**Mounting Nut:** Brass, Zinc plated with chromate treatment.

**Lockwasher:** Spring steel, zinc plated with chromate treatment.

**Panel Seal:** Silicone Rubber.

**Shaft & Stop Arm:** Zinc die cast, zinc plated with chromate treatment.

**Retaining Ring:** 302 stainless steel, passivated.

**Shaft Seal:** Silicone rubber.

**Stop Pins:** 303 stainless steel, passivated.

**Detent Rotor:** Molded Thermoplastic.

**Detent Spring:** Tinned music wire.

**Detent Balls:** Steel, nickel plated.

**Contact Spring:** Stainless steel, passivated.

**Rotor Contact:** Brass, silver over nickel plated.

**Common Ring:** Brass, gold over silver over nickel plated.

**Terminals:** Brass, gold over silver over nickel plated.

**Switch Base:** Molded thermoset plastic.

**Mounting Hardware:** One mounting nut .089" thick by .375" across flats and one internal tooth lockwasher are supplied with the switch.

SERIES  
55 & 56

## Choices And Limitations

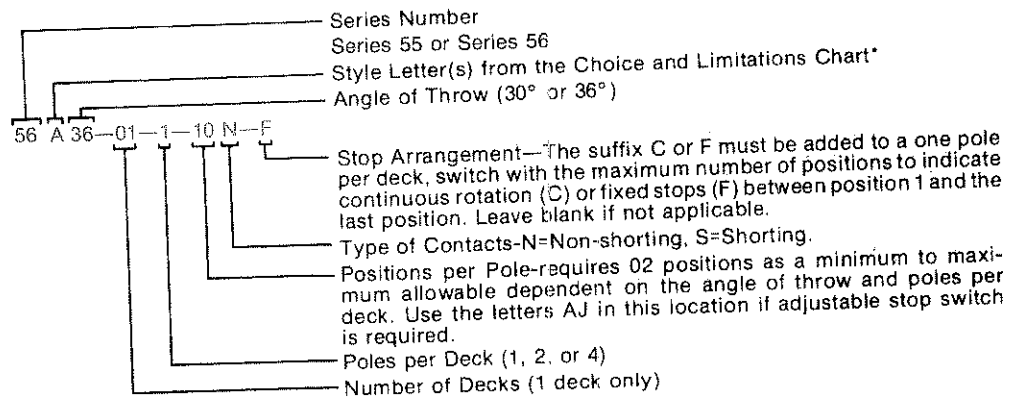
Style, Description & Applicable Drawing Figures	Angle Of Throw	Stops	Terminals	Number of Poles		Number Of Positions/Pole
				Shorting	Non-Shorting	
<b>A</b> = Standard <b>S</b> = Standard, Shaft/Panel Seal <b>B</b> = Screwdriver Slotted <b>BS</b> = Slotted, Shaft/Panel Seal	30°	Fixed	Solder Lug	1	1	2 thru 12
				2	2	2 thru 6
	4			4	2 or 3	
	1			1	2 thru 10	
<b>P</b> = PC Mount <b>SP</b> = PC Mount, Shaft/Panel Seal <b>BP</b> = Screwdriver Slotted, PC Mount <b>BSP</b> = Slotted, Sealed, PC Mount	30°	Fixed	Printed Circuit	2	2	2 thru 5
				4	4	2 thru 12
	1			1	2 thru 6	
	2			2	2 or 3	
<b>D</b> = Adjustable Stops <b>SD</b> = Adj. Stops, Shaft/Panel Seal <b>BD</b> = Adj. Stops, Screwdriver Slotted <b>BSD</b> = Slotted, Sealed, Adjustable	30°	Adjustable	Solder lug	1	1	Adjustable (2 thru 12)
				2	2	Adjustable (2 thru 6)
	4			4	2 or 3	
	1			1	Adjustable (2 thru 10)	
<b>DP</b> = Adj. Stops, PC Mount <b>SDP</b> = Adjustable, PC Mount, Sealed <b>BDP</b> = Slotted, Adjustable, PC Mount <b>BDSP</b> = Slotted, Sealed, Adj., PC	30°	Adjustable	Printed Circuit	2	2	Adjustable (2 thru 5)
				4	4	Adjustable (2 thru 12)
	1			1	Adjustable (2 thru 6)	
	2			2	2 or 3	
	36°			1	1	Adjustable (2 thru 10)
				2	2	Adjustable (2 thru 5)

Switches with bushing flats at 90°, are available by special order.

For additional features in this series, see Features Chart on page E-7.

## Ordering Information

Part number is descriptive and formed in the following manner:



\*For styles which include "D", see also "Positions per Pole".

For prices and discounts, contact a local Sales Office, an authorized local Distributor, or Grayhill.

Available From Your Local GRAYHILL Distributor.