



Chipsmall Limited consists of a professional team with an average of over 10 year of expertise in the distribution of electronic components. Based in Hongkong, we have already established firm and mutual-benefit business relationships with customers from,Europe,America and south Asia,supplying obsolete and hard-to-find components to meet their specific needs.

With the principle of "Quality Parts,Customers Priority,Honest Operation,and Considerate Service",our business mainly focus on the distribution of electronic components. Line cards we deal with include Microchip,ALPS,ROHM,Xilinx,Pulse,ON,Everlight and Freescale. Main products comprise IC,Modules,Potentiometer,IC Socket,Relay,Connector.Our parts cover such applications as commercial,industrial, and automotives areas.

We are looking forward to setting up business relationship with you and hope to provide you with the best service and solution. Let us make a better world for our industry!



## Contact us

Tel: +86-755-8981 8866 Fax: +86-755-8427 6832

Email & Skype: info@chipsmall.com Web: www.chipsmall.com

Address: A1208, Overseas Decoration Building, #122 Zhenhua RD., Futian, Shenzhen, China



# Low Profile International Transformers Printed Circuit Mount Encapsulated



Direct Plug-in Replacement for Original FlatHead™ Design  
Low Profile Transformers



#### Features and Benefits

- Encapsulated in order to meet harsh environmental conditions
- Rigid pin construction for easier board insertion and higher reliability
- Mounting holes provided for greater resistance to shock and vibration
- Improved electrical characteristics - regulation, temperature rise, efficiency, etc.
- Reduced magnetic radiation

#### General Specifications

- Power - 2.5 VA to 18 VA
- Dielectric Strength - 4000 Vrms Hipot
- Primaries - Dual primaries, 115/230 V - 50/60Hz
- Secondaries - Series or parallel
- Height - 1.050" to 1.22"
- Insulation System - Class B, 130° C

#### Agency Certifications

- UL recognized to UL 506 / UL 5085-2, File # E63829
- CSA certified to C22.2 #66.1, File # 221070
- TUV Rheinland Certified IEC / EN 60950, License # 744985



Part Number	VA	Secondary RMS Rating	
	Size	Series	Parallel
10-250-LPI	2.5	10 VCT @ 250 mA	5V @ 500 mA
12-200-LPI	2.5	12.6VCT@ 200 mA	6.3V@ 400 mA
16-150-LPI	2.5	16 VCT @ 150 mA	8V @ 300 mA
20-125-LPI	2.5	20 VCT @ 125 mA	10V @ 250 mA
24-100-LPI	2.5	24 VCT @ 100 mA	12V @ 200 mA
30-85-LPI	2.5	30 VCT @ 85 mA	15V @ 170 mA
34-75-LPI	2.5	34 VCT @ 75 mA	17V @ 150 mA
40-60-LPI	2.5	40 VCT @ 60 mA	20V @ 120 mA
56-45-LPI	2.5	56 VCT @ 45 mA	28V @ 90 mA
230-10-LPI	2.5	230VCT @ 10 mA	115V@ 20 mA
10-600-LPI	6	10 VCT @ 600 mA	5V @ 1.2 A
12-450-LPI	6	12.6VCT@ 450 mA	6.3V@ 900 mA
16-350-LPI	6	16 VCT @ 350 mA	8V @ 700 mA
20-300-LPI	6	20 VCT @ 300 mA	10V @ 600 mA
24-250-LPI	6	24 VCT @ 250 mA	12V @ 500 mA
30-200-LPI	6	30 VCT @ 200 mA	15V @ 400 mA
34-170-LPI	6	34 VCT @ 170 mA	17V @ 340 mA
40-150-LPI	6	40 VCT @ 150 mA	20V @ 300 mA
56-100-LPI	6	56 VCT @ 100 mA	28V @ 200 mA
230-25-LPI	6	230VCT @ 25 mA	115V@ 50 mA
10-900-LPI	9	10 VCT @ 900 mA	5V @ 1.8 A
12-725-LPI	9	12.6VCT@ 725 mA	6.3V @ 1.45 A
16-560-LPI	9	16 VCT @ 560 mA	8V @ 1.12 A
20-450-LPI	9	20 VCT @ 450 mA	10V @ 900 mA
24-375-LPI	9	24 VCT @ 375 mA	12V @ 750 mA

Part Number	VA	Secondary RMS Rating	
	Size	Series	Parallel
30-300-LPI	9	30 VCT @ 300 mA	15V @ 600 mA
34-265-LPI	9	34 VCT @ 265 mA	17V @ 530 mA
40-225-LPI	9	40 VCT @ 225 mA	20V @ 450 mA
56-160-LPI	9	56 VCT @ 160mA	28V @ 320mA
230-40-LPI	9	230VCT @ 40mA	115V@ 80mA
10-1200-LPI	12	10 VCT @ 1.2 A	5V @ 2.4 A
12-900-LPI	12	12.6VCT @ 900 mA	6.3V @ 1.8 A
16-700-LPI	12	16 VCT @ 700 mA	8V @ 1.4 A
20-600-LPI	12	20 VTC @ 600 mA	10V @ 1.2 A
24-500-LPI	12	24 VCT @ 500 mA	12V @ 1 A
30-400-LPI	12	30 VCT @ 400 mA	15V @ 800 mA
34-340-LPI	12	34 VCT @ 340 mA	17V @ 680 mA
40-300-LPI	12	40 VCT @ 300 mA	20V @ 600 mA
56-200-LPI	12	56 VCT @ 200 mA	28V @ 400 mA
230-50-LPI	12	230VCT @ 50 mA	115V@ 100 mA
10-1800-LPI	18	10 VCT @ 1.8 A	5V @ 3.6 A
12-1500-LPI	18	12.6VCT @ 1.5 A	6.3V @ 3 A
16-1100-LPI	18	16 VCT @ 1.1 A	8V @ 2.2 A
20-900-LPI	18	20 VCT @ 900 mA	10V @ 1.8 A
24-750-LPI	18	24 VCT @ 750 mA	12V @ 1.5 A
30-600-LPI	18	30 VCT @ 600 mA	15V @ 1.2 A
34-500-LPI	18	34 VCT @ 500 mA	17V @ 1 A
40-450-LPI	18	40 VCT @ 450 mA	20V @ 900 mA
56-320-LPI	18	56 VCT @ 320 mA	28V @ 640 mA
230-75-LPI	18	230VCT @ 75 mA	115V@ 150 mA

Custom versions available upon request.

©2015 Signal Transformer Inc. Specifications subject to change without notice. 07.15

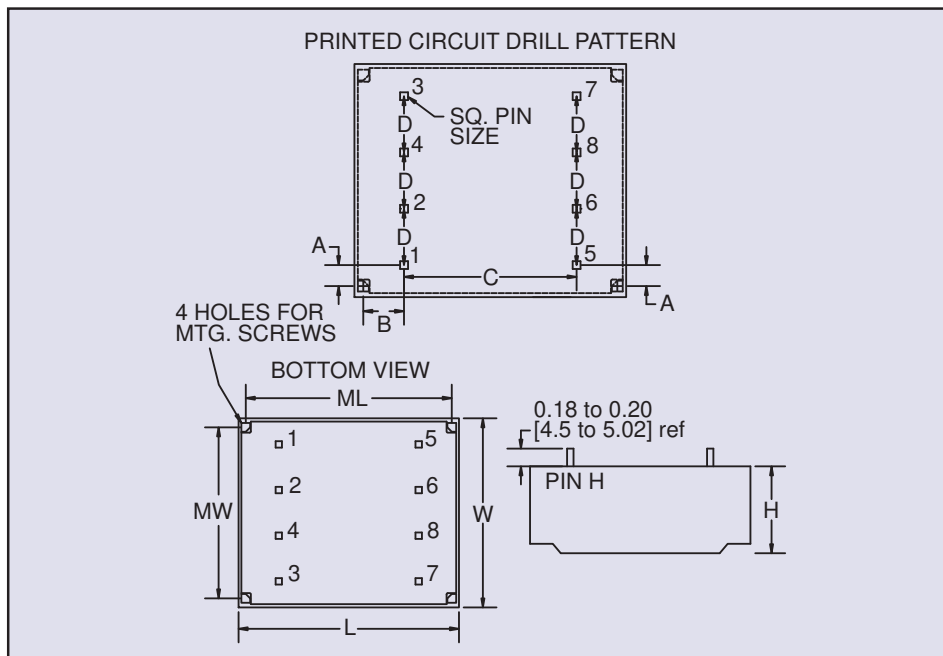
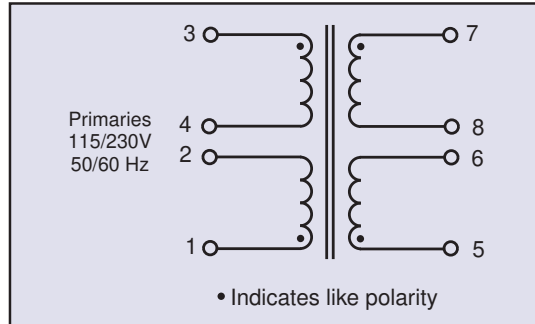


www.signaltransformer.com

500 Bayview Avenue, Inwood, NY 11096  
Toll Free 866-239-5777 • Tel 516-239-5777 • Fax 516-239-7208  
sales@signaltransformer.com • techhelp@signaltransformer.com

# Low Profile International Transformers Printed Circuit Mount Encapsulated

Direct Plug-in Replacement for Original FlatHead™ Design  
Low Profile Transformers



VA	Dimensions									Weight	Self Tap Screw Size	Pin Size
	A	B	C	D	L	W	H	ML	MW			
Size	Inches (mm)									lbs (kg)		Inches (mm)
2.5	0.19 (4.8)	0.29 (7.2)	1.61 (40.9)	0.37 (9.4)	2.37 (60.2)	1.65 (42.1)	0.72 (18.3)	2.19 (55.6)	1.50 (38.1)	0.27 (0.12)	#4	.025 (.635)
6	0.19 (4.8)	0.29 (7.2)	1.61 (40.9)	0.37 (9.4)	2.37 (60.2)	1.65 (42.1)	0.89 (22.7)	2.19 (55.6)	1.50 (38.1)	0.39 (0.17)	#4	.025 (.635)
9	0.19 (4.8)	0.29 (7.2)	1.61 (40.9)	0.37 (9.4)	2.37 (60.2)	1.65 (42.1)	1.08 (27.4)	2.19 (55.6)	1.50 (38.1)	0.51 (0.23)	#4	.025 (.635)
12	0.22 (5.6)	0.20 (5.1)	2.02 (51.3)	0.50 (12.7)	2.63 (66.8)	2.19 (55.6)	1.06 (26.6)	2.38 (60.4)	1.94 (49.2)	0.75 (0.34)	#6	.036 (.914)
18	0.22 (5.6)	0.20 (5.1)	2.02 (51.3)	0.50 (12.7)	2.63 (66.8)	2.19 (55.6)	1.18 (30.0)	2.38 (60.4)	1.94 (49.2)	0.95 (0.43)	#6	.036 (.914)

Custom versions available upon request.

©2015 Signal Transformer Inc. Specifications subject to change without notice. 07.15



www.signaltransformer.com

500 Bayview Avenue, Inwood, NY 11096  
Toll Free 866-239-5777 • Tel 516-239-5777 • Fax 516-239-7208  
sales@signaltransformer.com • techhelp@signaltransformer.com