



Chipsmall Limited consists of a professional team with an average of over 10 year of expertise in the distribution of electronic components. Based in Hongkong, we have already established firm and mutual-benefit business relationships with customers from,Europe,America and south Asia,supplying obsolete and hard-to-find components to meet their specific needs.

With the principle of “Quality Parts,Customers Priority,Honest Operation,and Considerate Service”,our business mainly focus on the distribution of electronic components. Line cards we deal with include Microchip,ALPS,ROHM,Xilinx,Pulse,ON,Everlight and Freescale. Main products comprise IC,Modules,Potentiometer,IC Socket,Relay,Connector.Our parts cover such applications as commercial,industrial, and automotives areas.

We are looking forward to setting up business relationship with you and hope to provide you with the best service and solution. Let us make a better world for our industry!



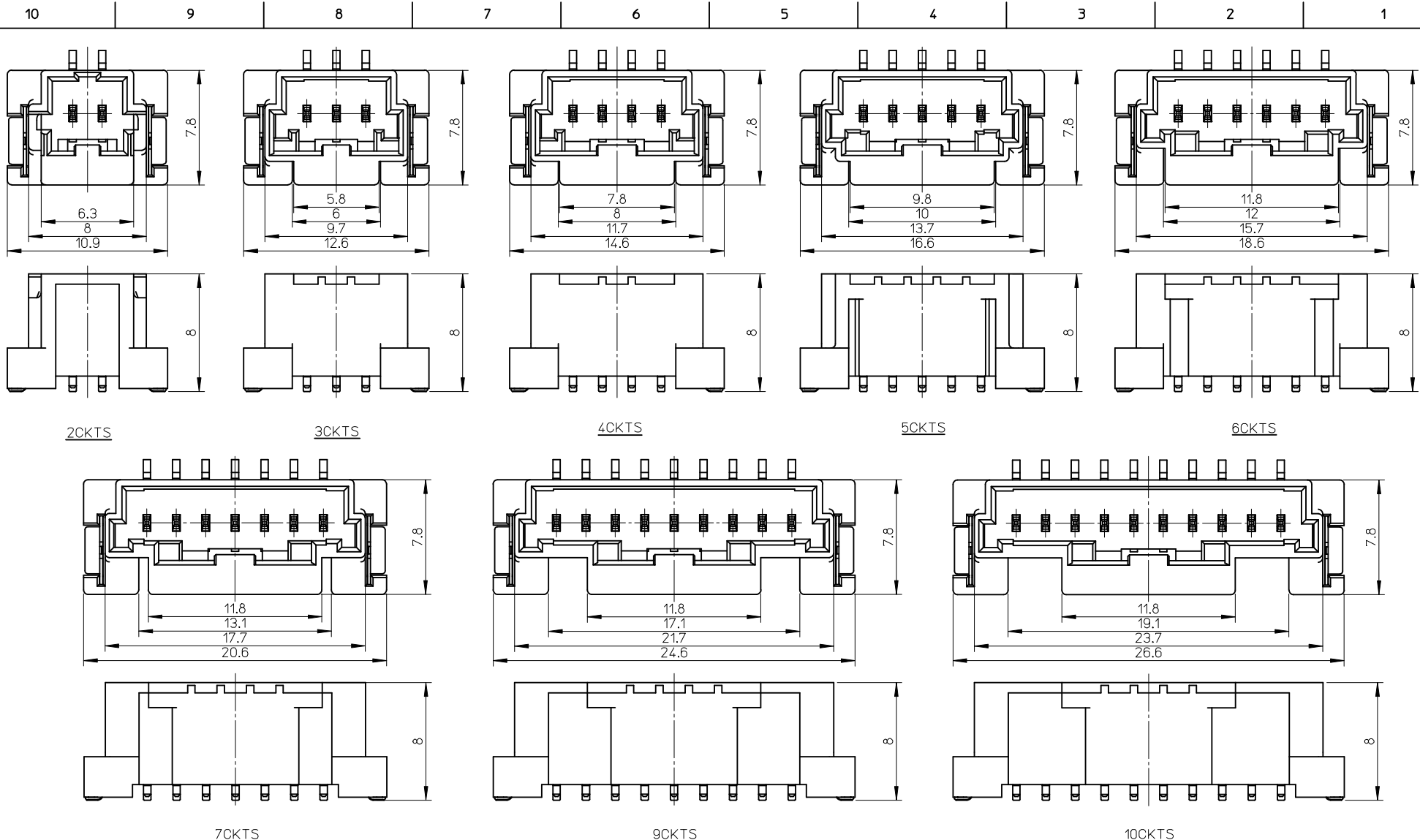
Contact us

Tel: +86-755-8981 8866 Fax: +86-755-8427 6832

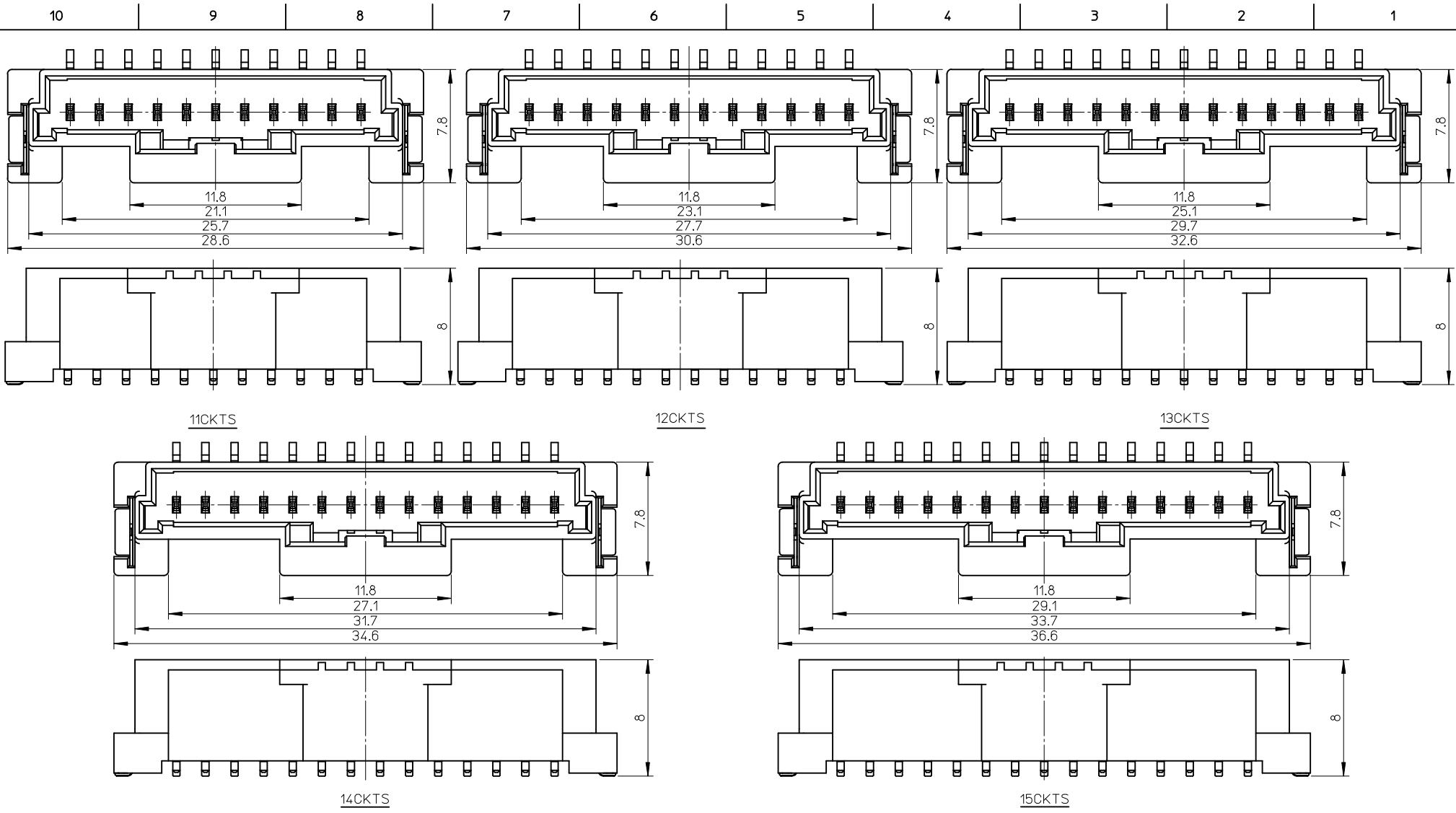
Email & Skype: info@chipsmall.com Web: www.chipsmall.com

Address: A1208, Overseas Decoration Building, #122 Zhenhua RD., Futian, Shenzhen, China





REVISED EC NO: JTR2016-0015 G DRW:KAKAGAI02 2016/03/01 CHKD:HKOMATSU 2016/03/04 APPR:KAYAMAMOTO 2016/03/08	QUALITY SYMBOLS $\nabla = 0$ $\nabla = 0$ $\nabla = 0$	DESCRIPTION REV	GENERAL TOLERANCES (UNLESS SPECIFIED)		DIMENSION STYLE	SCALE	DESIGN UNITS	THIRD ANGLE PROJECTION	
			mm	INCH	MM ONLY	4:1	METRIC		
			4 PLACES	± ---	± ---	DRAWN BY	DATE		TITLE
			3 PLACES	± ---	± ---	SHSHIBATA	2009/02/18		2.0MM PITCH W/B CONN. WAFER ASSY ST. SMT
2 PLACES	± ---	± ---	CHECKED BY	DATE					
1 PLACE	± ---	± ---	HKOMATSU	2009/02/18					
0 PLACE	± ---	± ---	APPROVED BY	DATE					
	± ---	± ---	AKANESHIGE	2009/02/18					
ANGULAR ± - °			DRAFT WHERE APPLICABLE MUST REMAIN WITHIN DIMENSIONS		MATERIAL NO.	DOCUMENT NO.	molex		
			SEE CHART		SD-560020-001		SHEET NO. 2 OF 4		
			THIS DRAWING CONTAINS INFORMATION THAT IS PROPRIETARY TO MOLEX INCORPORATED AND SHOULD NOT BE USED WITHOUT WRITTEN PERMISSION						



REVISED EC NO: JTR2016-0015 G DRW:KNAGA I02 2016/03/01 CHKD:HKOMATSU 2016/03/04 APPR:MIYAMOTO 2016/03/08	QUALITY SYMBOLS $\nabla = 0$ $\nabla = 0$ $\nabla = 0$	GENERAL TOLERANCES (UNLESS SPECIFIED)		DIMENSION STYLE MM ONLY	SCALE 4:1	DESIGN UNITS METRIC	THIRD ANGLE PROJECTION	
		4 PLACES ± --- ± ---	3 PLACES ± --- ± ---	DRAWN BY SHSHIBATA	DATE 2009/02/18	TITLE 2.0MM PITCH W/B CONN. WAFER ASSY ST. SMT		
		2 PLACES ± --- ± ---	1 PLACE ± --- ± ---	CHECKED BY HKOMATSU	DATE 2009/02/18	molex		
		0 PLACE ± --- ± ---	ANGULAR ± - °	APPROVED BY AKANESHIGE	DATE 2009/02/18	DOCUMENT NO. SD-560020-001	SHEET NO. 3 OF 4	
REV	DESCRIPTION	DRAFT WHERE APPLICABLE MUST REMAIN WITHIN DIMENSIONS		SEE CHART	THIS DRAWING CONTAINS INFORMATION THAT IS PROPRIETARY TO MOLEX INCORPORATED AND SHOULD NOT BE USED WITHOUT WRITTEN PERMISSION			

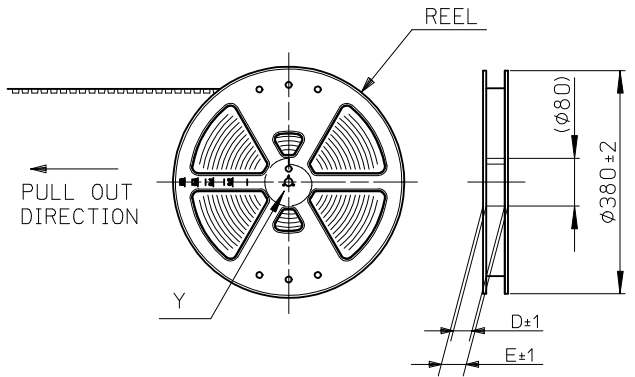
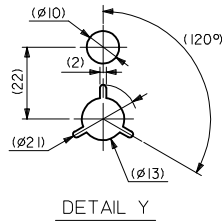
	10	9	8	7	6	5	4	3	2	1				
F	Sn NATURAL	11.8	29.1	33.7	36.6	560020-1520	15	Au NATURAL	11.8	29.1	33.7	36.6	560020-1530	15
		11.8	27.1	31.7	34.6	560020-1420	14		11.8	27.1	31.7	34.6	560020-1430	14
		11.8	25.1	29.7	32.6	560020-1320	13		11.8	25.1	29.7	32.6	560020-1330	13
		11.8	23.1	27.7	30.6	560020-1220	12		11.8	23.1	27.7	30.6	560020-1230	12
		11.8	21.1	25.7	28.6	560020-1120	11		11.8	21.1	25.7	28.6	560020-1130	11
		11.8	19.1	23.7	26.6	560020-1020	10		11.8	19.1	23.7	26.6	560020-1030	10
		11.8	17.1	21.7	24.6	560020-0920	9		11.8	17.1	21.7	24.6	560020-0930	9
		11.8	15.1	19.7	22.6	560020-0800/-0820	8		11.8	15.1	19.7	22.6	560020-0830	8
		11.8	13.1	17.7	20.6	560020-0700/-0720	7		11.8	13.1	17.7	20.6	560020-0730	7
		11.8	12	15.7	18.6	560020-0600/-0620	6		11.8	12	15.7	18.6	560020-0630	6
E	PLATING	D	C	B	A	EMBOSSED PACKAGE ORDER NO.	CKTS	PLATING	D	C	B	A	EMBOSSED PACKAGE ORDER NO.	CKTS
		9.8	10	13.7	16.6	560020-0500/-0520	5		9.8	10	13.7	16.6	560020-0530	5
		7.8	8	11.7	14.6	560020-0400/-0420	4		7.8	8	11.7	14.6	560020-0430	4
		5.8	6	9.7	12.6	560020-0300/-0320	3		5.8	6	9.7	12.6	560020-0330	3
	6.3	8.0	10.9	560020-0200/-0220	2		6.3	8.0	10.9	560020-0230	2			
CONNECTOR SERIES NO. 560020-**08							CONNECTOR SERIES NO. 560020-**18							

D	Sn BLACK	/	/	/	/	/	15
		/	/	/	/	/	14
		/	/	/	/	/	13
		/	/	/	/	/	12
		/	/	/	/	/	11
		/	/	/	/	/	10
		/	/	/	/	/	9
		11.8	15.1	19.7	22.6	560020-0821	8
		/	/	/	/	/	7
		11.8	12	15.7	18.6	560020-0621	6
/	/	/	/	/	5		
7.8	8	11.7	14.6	560020-0421	4		
5.8	6	9.7	12.6	560020-0321	3		
6.3	8.0	10.9	560020-0221	2			
PLATING	D	C	B	A	EMBOSSED PACKAGE ORDER NO.	CKTS	
CONNECTOR SERIES NO. 560020-**28							

C	Sn RED	/	/	/	/	/	15
		/	/	/	/	/	14
		/	/	/	/	/	13
		/	/	/	/	/	12
		/	/	/	/	/	11
		/	/	/	/	/	10
		/	/	/	/	/	9
		11.8	15.1	19.7	22.6	560020-0822	8
		/	/	/	/	/	7
		11.8	12	15.7	18.6	560020-0622	6
/	/	/	/	/	5		
7.8	8	11.7	14.6	560020-0422	4		
5.8	6	9.7	12.6	560020-0322	3		
6.3	8.0	10.9	560020-0222	2			
PLATING	D	C	B	A	EMBOSSED PACKAGE ORDER NO.	CKTS	
CONNECTOR SERIES NO. 560020-**48							

B	Sn BLUE	/	/	/	/	/	15
		/	/	/	/	/	14
		/	/	/	/	/	13
		/	/	/	/	/	12
		/	/	/	/	/	11
		/	/	/	/	/	10
		/	/	/	/	/	9
		11.8	15.1	19.7	22.6	560020-0823	8
		/	/	/	/	/	7
		11.8	12	15.7	18.6	560020-0623	6
/	/	/	/	/	5		
7.8	8	11.7	14.6	560020-0423	4		
5.8	6	9.7	12.6	560020-0323	3		
6.3	8.0	10.9	560020-0223	2			
PLATING	D	C	B	A	EMBOSSED PACKAGE ORDER NO.	CKTS	
CONNECTOR SERIES NO. 560020-**68							

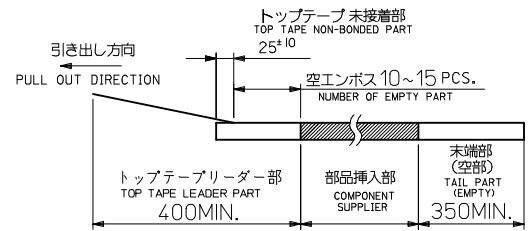
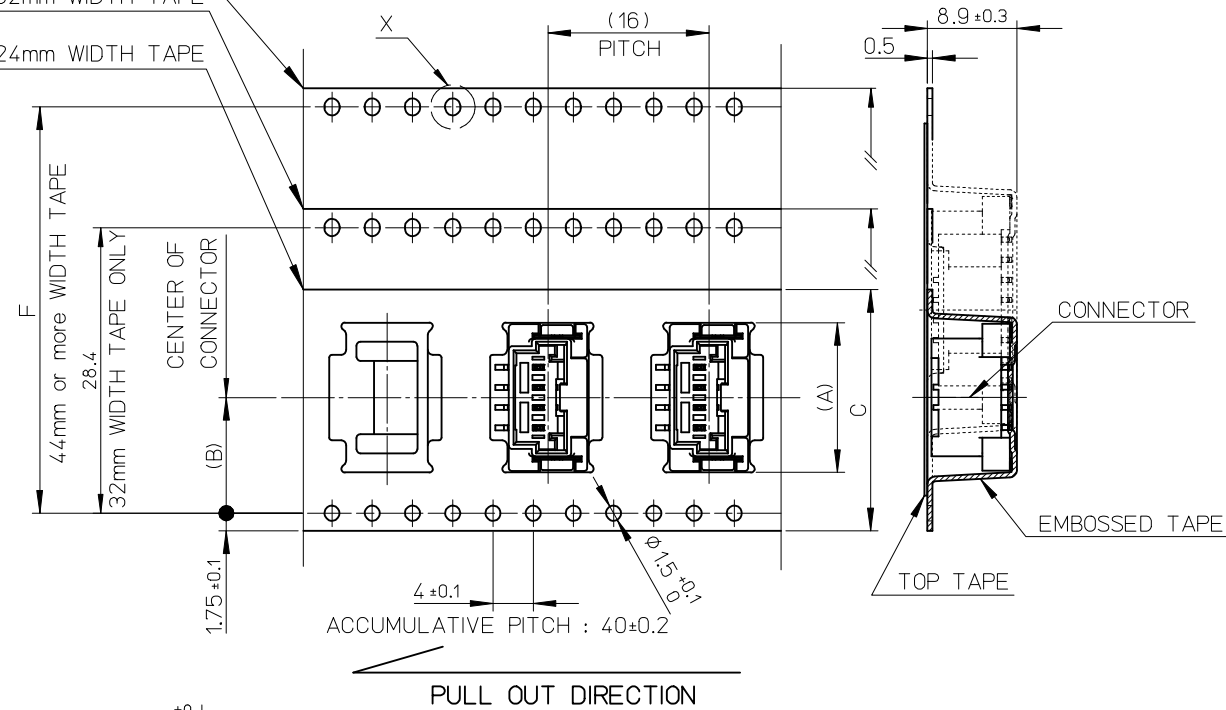
REVISED	EC NO: JTR2016-0015	QUALITY SYMBOLS	GENERAL TOLERANCES (UNLESS SPECIFIED)	DIMENSION STYLE MM ONLY	SCALE 5:1	DESIGN UNITS METRIC	THIRD ANGLE PROJECTION				
	DRINKNAGA I02 2016/03/01							4 PLACES ± --- ± ---	DRAWN BY SHSHIBATA	DATE 2009/02/18	TITLE
	CHKD-HKOMATSU 2016/03/04							3 PLACES ± --- ± ---	CHECKED BY HKOMATSU	DATE 2009/02/18	2.0MM PITCH W/B CONN. WAFER ASSY ST. SMT
APPR-MAYAMOTO 2016/03/08	2 PLACES ± --- ± ---	1 PLACE ± --- ± ---	0 PLACE ± --- ± ---	APPROVED BY AKANESHIGE	DATE 2009/02/18	molex	DOCUMENT NO. SD-560020-001	SHEET NO. 4 OF 4			
	ANGULAR ± - °	DRAFT WHERE APPLICABLE MUST REMAIN WITHIN DIMENSIONS		SEE CHART	THIS DRAWING CONTAINS INFORMATION THAT IS PROPRIETARY TO MOLEX INCORPORATED AND SHOULD NOT BE USED WITHOUT WRITTEN PERMISSION						



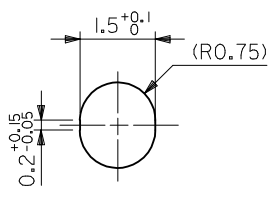
NOTES

- 製品番号:
 ナチュラル・錫めっき 560020-**20
 ナチュラル・金めっき 560020-**30
 黒・錫めっき 560020-**21
 赤・錫めっき 560020-**22
 青・錫めっき 560020-**23
 詳細寸法については、製品単体図面を参照ください。
 PART NO.
 NATURAL・Sn Plating 5600020-**20
 NATURAL・Au Plating 560020-**30
 BLACK・Sn Plating 5600020-**21
 RED・Sn Plating 5600020-**22
 BLUE・Sn Plating 5600020-**23
 SEE SALES DRAWING FOR CONNECTOR
- 梱包数量: 650個/REEL
 NUMBER OF CONNECTORS 650 PCS/REEL
- リードテープ長さ
 LEAD TAPE LENGTH

44mm or more
WIDTH TAPE
32mm WIDTH TAPE
24mm WIDTH TAPE



- 材料
 MATERIAL
 キャリアテープ: ポリスチレン
 CARRIER TAPE: POLYSTYRENE
 トップテープ: PET, PE, PEF
 TOP TAPE
 リール: ポリスチレン
 REEL: POLYSTYRENE
- 一般公差
 GENERAL TOLERANCES
 10 UNDER: 0.2
 10 OVER 30 UNDER: 0.25
 30 OVER: 0.3
 ANGULAR: ±1°



DETAIL X
(SCALE 10:1)

PULL OUT DIRECTION
DIRECTION OF CONNECTOR
IN EMBOSSSED TAPE

REVISED EC NO: JTR2016-0015 DRWN:KNAGA102 2016/03/01 CHKD:HKOMATSU 2016/03/04 APPR: MAYAMAMOTO 2016/03/08	QUALITY SYMBOLS ▽E=0 ▽F=0 ▽G=0	GENERAL TOLERANCES (UNLESS SPECIFIED)		DIMENSION STYLE MM ONLY	SCALE 2:1	DESIGN UNITS METRIC	THIRD ANGLE PROJECTION				
		4 PLACES ± --- ± ---	3 PLACES ± --- ± ---	2 PLACES ± --- ± ---	1 PLACE ± --- ± ---	0 PLACE ± --- ± ---	ANGULAR ± - °	DRAFT WHERE APPLICABLE MUST REMAIN WITHIN DIMENSIONS	DRAWN BY YTAMAKI	DATE 2014/05/23	TITLE 2.0MM PITCH W/B ST. WAFER ASSY EMBOSSSED TAPE PACKAGE
		mm	INCH	CHECKED BY HKOMATSU	DATE 2014/05/23	APPROVED BY MAYAMAMOTO	DATE 2014/06/30	MATERIAL NO. SEE CHART	DOCUMENT NO. SD-560020-003	SHEET NO. 1 OF 2	
		THIS DRAWING CONTAINS INFORMATION THAT IS PROPRIETARY TO MOLEX INCORPORATED AND SHOULD NOT BE USED WITHOUT WRITTEN PERMISSION		SIZE A3							

