



Chipsmall Limited consists of a professional team with an average of over 10 year of expertise in the distribution of electronic components. Based in Hongkong, we have already established firm and mutual-benefit business relationships with customers from,Europe,America and south Asia,supplying obsolete and hard-to-find components to meet their specific needs.

With the principle of “Quality Parts,Customers Priority,Honest Operation,and Considerate Service”,our business mainly focus on the distribution of electronic components. Line cards we deal with include Microchip,ALPS,ROHM,Xilinx,Pulse,ON,Everlight and Freescale. Main products comprise IC,Modules,Potentiometer,IC Socket,Relay,Connector.Our parts cover such applications as commercial,industrial, and automotives areas.

We are looking forward to setting up business relationship with you and hope to provide you with the best service and solution. Let us make a better world for our industry!



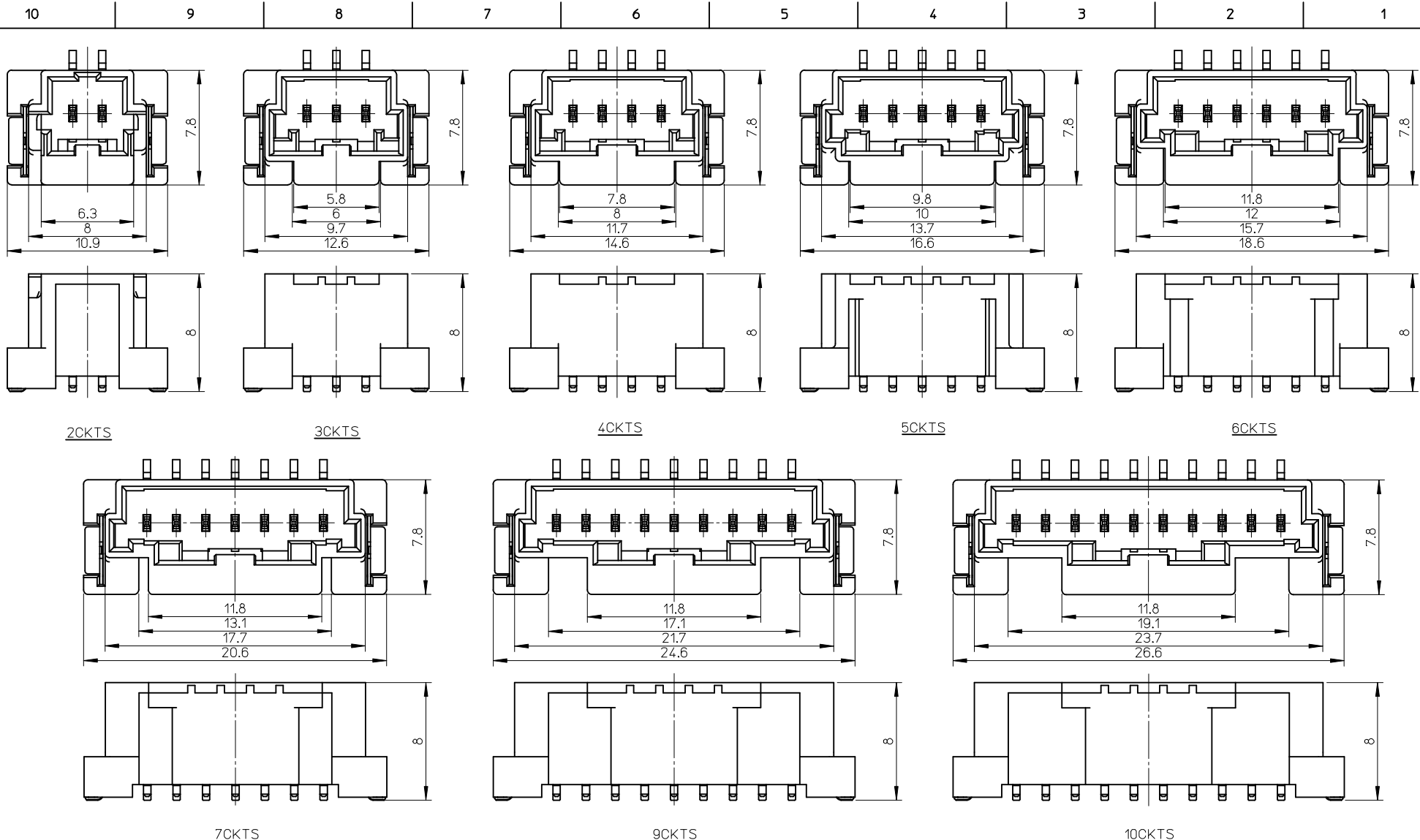
Contact us

Tel: +86-755-8981 8866 Fax: +86-755-8427 6832

Email & Skype: info@chipsmall.com Web: www.chipsmall.com

Address: A1208, Overseas Decoration Building, #122 Zhenhua RD., Futian, Shenzhen, China





2CKTS

3CKTS

4CKTS

5CKTS

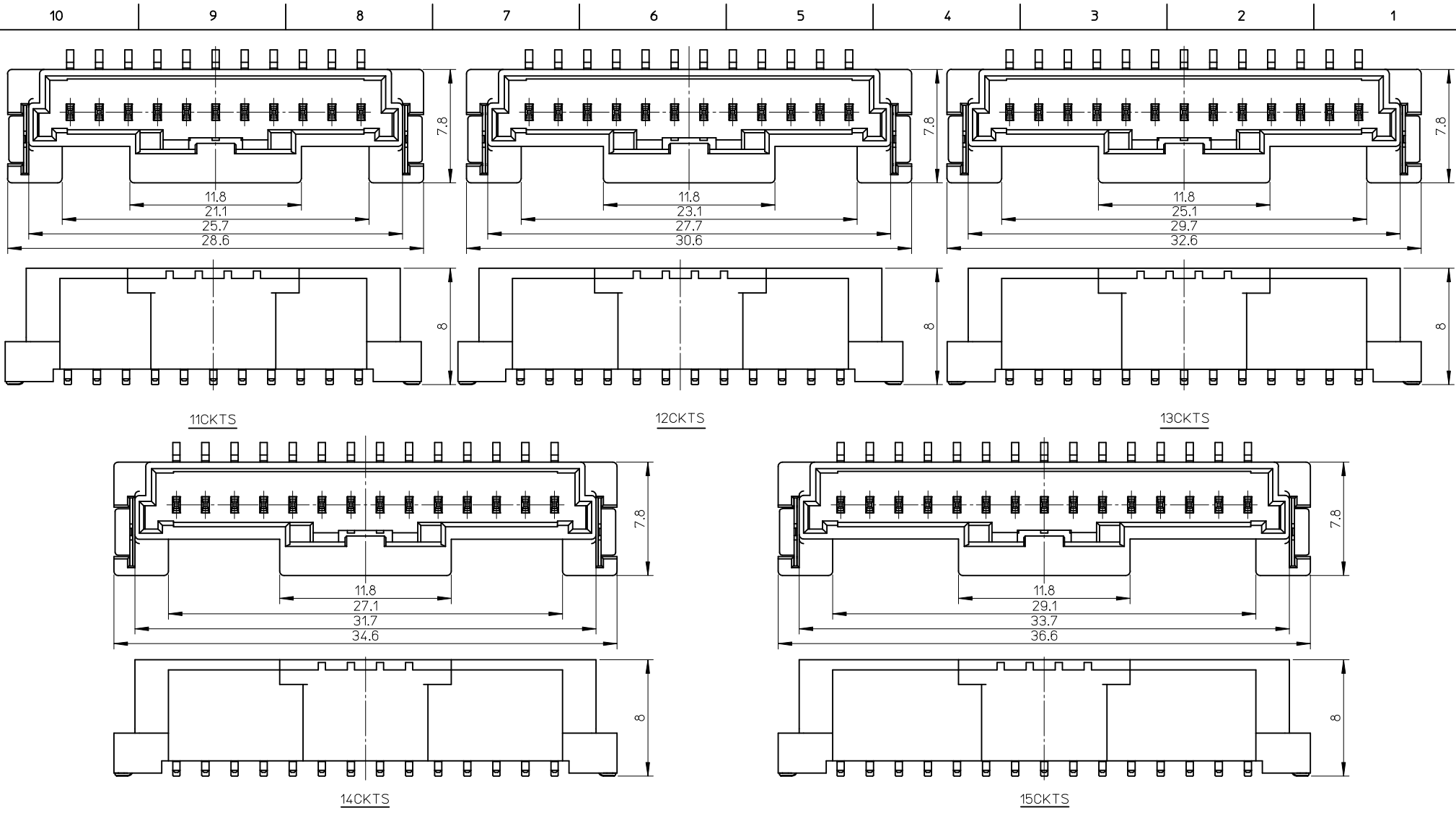
6CKTS

7CKTS

9CKTS

10CKTS

REVISED EC NO: JTR2016-0015 G DRW:KINAGA102 2016/03/01 CHKD:HKOMATSU 2016/03/04 APPR:KAYAMAMOTO 2016/03/08	QUALITY SYMBOLS $\nabla = 0$ $\nabla = 0$ $\nabla = 0$	GENERAL TOLERANCES (UNLESS SPECIFIED)		DIMENSION STYLE MM ONLY	SCALE 4:1	DESIGN UNITS METRIC	THIRD ANGLE PROJECTION		
		4 PLACES \pm --- \pm --- 3 PLACES \pm --- \pm --- 2 PLACES \pm --- \pm --- 1 PLACE \pm --- \pm --- 0 PLACE \pm --- \pm ---	mm INCH	DRAWN BY SHSHIBATA	DATE 2009/02/18	TITLE 2.0MM PITCH W/B CONN. WAFER ASSY ST. SMT			
		ANGULAR \pm - °		CHECKED BY HKOMATSU	DATE 2009/02/18	molex			
		DRAFT WHERE APPLICABLE MUST REMAIN WITHIN DIMENSIONS		APPROVED BY AKANESHIGE	DATE 2009/02/18	MATERIAL NO.	DOCUMENT NO. SD-560020-001	SHEET NO. 2 OF 4	
SEE CHART		THIS DRAWING CONTAINS INFORMATION THAT IS PROPRIETARY TO MOLEX INCORPORATED AND SHOULD NOT BE USED WITHOUT WRITTEN PERMISSION							

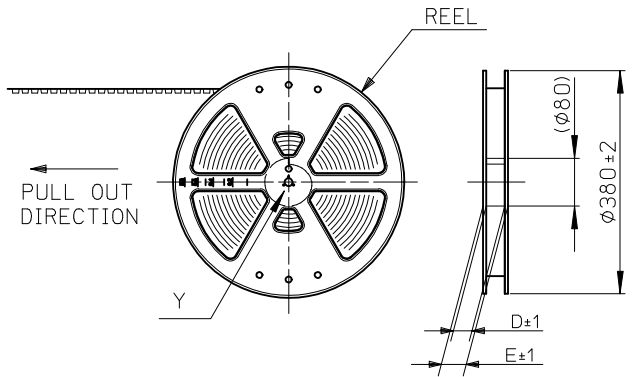
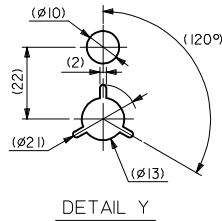


REVISED EC NO: JTR2016-0015 G DRW:KNAGA I02 2016/03/01 CHKD:HKOMATSU 2016/03/04 APPR:MIYAMOTO 2016/03/08	QUALITY SYMBOLS $\nabla = 0$ $\nabla = 0$ $\nabla = 0$	GENERAL TOLERANCES (UNLESS SPECIFIED)		DIMENSION STYLE MM ONLY	SCALE 4:1	DESIGN UNITS METRIC	THIRD ANGLE PROJECTION	
				DRAWN BY SHSHIBATA	DATE 2009/02/18	TITLE 2.0MM PITCH W/B CONN. WAFER ASSY ST. SMT		
				CHECKED BY HKOMATSU	DATE 2009/02/18	molex		
				APPROVED BY AKANESHIGE	DATE 2009/02/18	DOCUMENT NO. SD-560020-001	SHEET NO. 3 OF 4	
		DRAFT WHERE APPLICABLE MUST REMAIN WITHIN DIMENSIONS		SEE CHART	THIS DRAWING CONTAINS INFORMATION THAT IS PROPRIETARY TO MOLEX INCORPORATED AND SHOULD NOT BE USED WITHOUT WRITTEN PERMISSION			

	10	9	8	7	6	5	4	3	2	1				
F	Sn NATURAL	11.8	29.1	33.7	36.6	560020-1520	15	Au NATURAL	11.8	29.1	33.7	36.6	560020-1530	15
		11.8	27.1	31.7	34.6	560020-1420	14		11.8	27.1	31.7	34.6	560020-1430	14
		11.8	25.1	29.7	32.6	560020-1320	13		11.8	25.1	29.7	32.6	560020-1330	13
		11.8	23.1	27.7	30.6	560020-1220	12		11.8	23.1	27.7	30.6	560020-1230	12
		11.8	21.1	25.7	28.6	560020-1120	11		11.8	21.1	25.7	28.6	560020-1130	11
		11.8	19.1	23.7	26.6	560020-1020	10		11.8	19.1	23.7	26.6	560020-1030	10
		11.8	17.1	21.7	24.6	560020-0920	9		11.8	17.1	21.7	24.6	560020-0930	9
		11.8	15.1	19.7	22.6	560020-0800/-0820	8		11.8	15.1	19.7	22.6	560020-0830	8
		11.8	13.1	17.7	20.6	560020-0700/-0720	7		11.8	13.1	17.7	20.6	560020-0730	7
		11.8	12	15.7	18.6	560020-0600/-0620	6		11.8	12	15.7	18.6	560020-0630	6
		9.8	10	13.7	16.6	560020-0500/-0520	5		9.8	10	13.7	16.6	560020-0530	5
		7.8	8	11.7	14.6	560020-0400/-0420	4		7.8	8	11.7	14.6	560020-0430	4
5.8	6	9.7	12.6	560020-0300/-0320	3	5.8	6	9.7	12.6	560020-0330	3			
6.3	/	8.0	10.9	560020-0200/-0220	2	6.3	/	8.0	10.9	560020-0230	2			
PLATING	D	C	B	A	EMBOSSED PACKAGE ORDER NO.	CKTS	PLATING	D	C	B	A	EMBOSSED PACKAGE ORDER NO.	CKTS	
CONNECTOR SERIES NO. 560020-**08							CONNECTOR SERIES NO. 560020-**18							

D	Sn BLACK	/	/	/	/	/	15	Sn RED	/	/	/	/	/	/	15	Sn BLUE	/	/	/	/	/	/	/	/	/	15		
		/	/	/	/	/	14		/	/	/	/	/	/	/		14	/	/	/	/	/	/	/	/	14		
		/	/	/	/	/	13		/	/	/	/	/	/	/		13	/	/	/	/	/	/	/	/	/	13	
		/	/	/	/	/	12		/	/	/	/	/	/	/		12	/	/	/	/	/	/	/	/	/	12	
		/	/	/	/	/	11		/	/	/	/	/	/	/		11	/	/	/	/	/	/	/	/	/	/	11
		/	/	/	/	/	10		/	/	/	/	/	/	/		10	/	/	/	/	/	/	/	/	/	/	10
		11.8	15.1	19.7	22.6	560020-0821	8		11.8	15.1	19.7	22.6	560020-0822	8	11.8		15.1	19.7	22.6	560020-0823	8							
		/	/	/	/	/	7		/	/	/	/	/	/	/		/	7	/	/	/	/	/	/	/	/	/	7
		11.8	12	15.7	18.6	560020-0621	6		11.8	12	15.7	18.6	560020-0622	6	11.8		12	15.7	18.6	560020-0623	6							
		/	/	/	/	/	5		/	/	/	/	/	/	/		/	5	/	/	/	/	/	/	/	/	/	5
		7.8	8	11.7	14.6	560020-0421	4		7.8	8	11.7	14.6	560020-0422	4	7.8		8	11.7	14.6	560020-0423	4							
		5.8	6	9.7	12.6	560020-0321	3		5.8	6	9.7	12.6	560020-0322	3	5.8		6	9.7	12.6	560020-0323	3							
6.3	/	8.0	10.9	560020-0221	2	6.3	/	8.0	10.9	560020-0222	2	6.3	/	8.0	10.9	560020-0223	2											
PLATING	D	C	B	A	EMBOSSED PACKAGE ORDER NO.	CKTS	PLATING	D	C	B	A	EMBOSSED PACKAGE ORDER NO.	CKTS	PLATING	D	C	B	A	EMBOSSED PACKAGE ORDER NO.	CKTS								
CONNECTOR SERIES NO. 560020-**28							CONNECTOR SERIES NO. 560020-**48							CONNECTOR SERIES NO. 560020-**68														

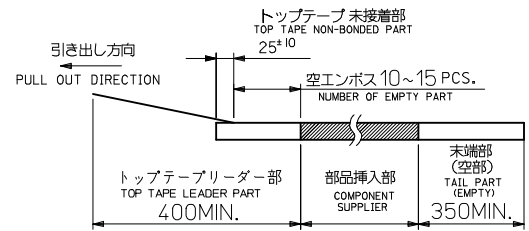
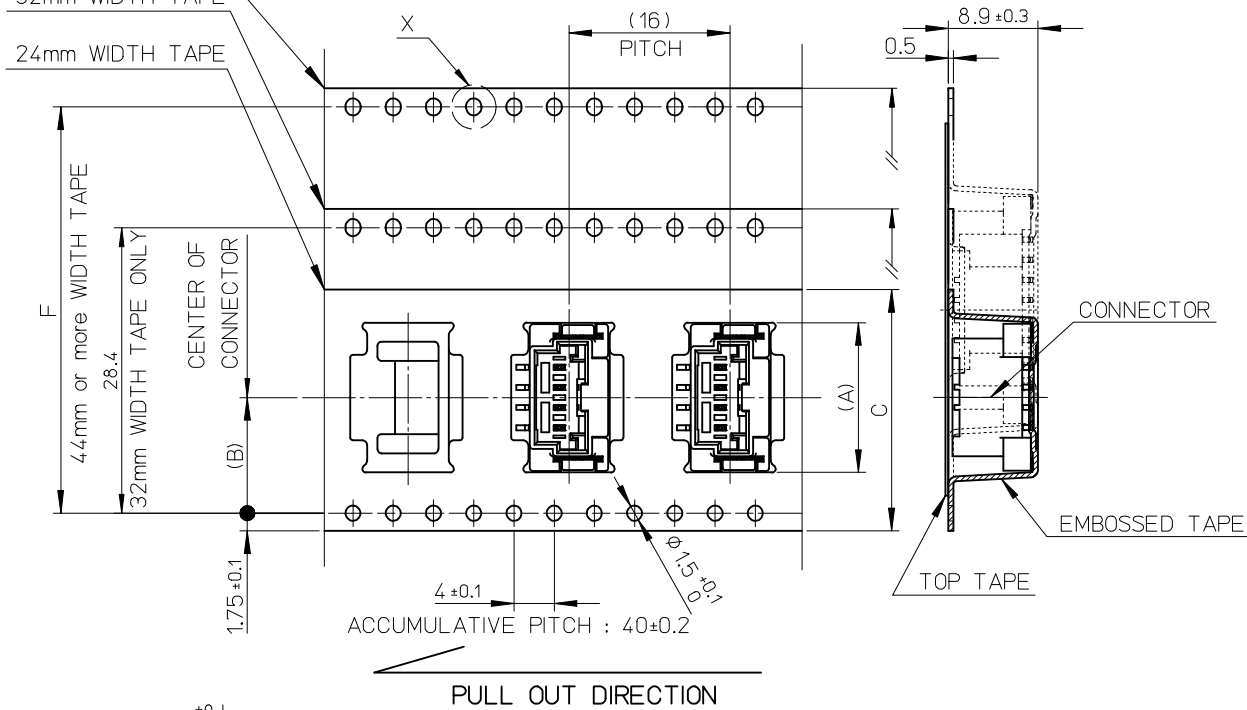
REVISED	EC NO: JTR2016-0015	QUALITY SYMBOLS	GENERAL TOLERANCES (UNLESS SPECIFIED)	DIMENSION STYLE MM ONLY	SCALE 5:1	DESIGN UNITS METRIC	THIRD ANGLE PROJECTION	TITLE 2.0MM PITCH W/B CONN. WAFER ASSY ST. SMT			
	DRINKNAGA I02 2016/03/01								4 PLACES ± --- ± ---	DRAWN BY SHSHIBATA	DATE 2009/02/18
	CHKD-HKOMATSU 2016/03/04								3 PLACES ± --- ± ---	CHECKED BY HKOMATSU	DATE 2009/02/18
	APPR: MAYAMOTO 2016/03/08								2 PLACES ± --- ± ---	APPROVED BY AKANESHIGE	DATE 2009/02/18
								MATERIAL NO.			
								DOCUMENT NO. SD-560020-001			
								SHEET NO. 4 OF 4			
								THIS DRAWING CONTAINS INFORMATION THAT IS PROPRIETARY TO MOLEX INCORPORATED AND SHOULD NOT BE USED WITHOUT WRITTEN PERMISSION			



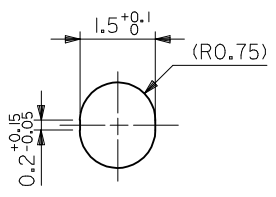
NOTES

- 製品番号:
 ナチュラル・錫めっき 560020-**20
 ナチュラル・金めっき 560020-**30
 黒・錫めっき 560020-**21
 赤・錫めっき 560020-**22
 青・錫めっき 560020-**23
 詳細寸法については、製品単体図面を参照ください。
 PART NO.
 NATURAL・Sn Plating 5600020-**20
 NATURAL・Au Plating 560020-**30
 BLACK・Sn Plating 5600020-**21
 RED・Sn Plating 5600020-**22
 BLUE・Sn Plating 5600020-**23
 SEE SALES DRAWING FOR CONNECTOR
- 梱包数量: 650個/REEL
 NUMBER OF CONNECTORS 650 PCS/REEL
- リードテープ長さ
 LEAD TAPE LENGTH

44mm or more
WIDTH TAPE
32mm WIDTH TAPE
24mm WIDTH TAPE



- 材料
 MATERIAL
 キャリアテープ: ポリスチレン
 CARRIER TAPE: POLYSTYRENE
 トップテープ: PET, PE, PEF
 TOP TAPE
 リール: ポリスチレン
 REEL: POLYSTYRENE
- 一般公差
 GENERAL TOLERANCES
 10 UNDER: 0.2
 10 OVER 30 UNDER: 0.25
 30 OVER: 0.3
 ANGULAR: ±1°



PULL OUT DIRECTION
 DIRECTION OF CONNECTOR
 IN EMBOSSED TAPE

REVISED EC NO: JTR2016-0015 DRWN:KNAGA102 2016/03/01 CHKD:HKOMATSU 2016/03/04 APPR: MAYAMAMOTO 2016/03/08	QUALITY SYMBOLS ▽E=0 ▽F=0 ▽G=0	GENERAL TOLERANCES (UNLESS SPECIFIED)		DIMENSION STYLE	SCALE	DESIGN UNITS	THIRD ANGLE PROJECTION		
		mm	INCH	MM ONLY	2:1	METRIC			
		4 PLACES ± --- ± ---	3 PLACES ± --- ± ---	2 PLACES ± --- ± ---	1 PLACE ± --- ± ---	0 PLACE ± --- ± ---		DRAWN BY DATE YTAMAKI 2014/05/23	
		DRAWN BY DATE YTAMAKI 2014/05/23		CHECKED BY DATE HKOMATSU 2014/05/23		APPROVED BY DATE MAYAMAMOTO 2014/06/30			
ANGULAR ± - °		DRAFT WHERE APPLICABLE MUST REMAIN WITHIN DIMENSIONS		MATERIAL NO.	DOCUMENT NO.		SHEET NO.		
SEE CHART				THIS DRAWING CONTAINS INFORMATION THAT IS PROPRIETARY TO MOLEX INCORPORATED AND SHOULD NOT BE USED WITHOUT WRITTEN PERMISSION		2.0MM PITCH W/B ST. WAFER ASSY EMBOSSED TAPE PACKAGE		1 OF 2	

