



Chipsmall Limited consists of a professional team with an average of over 10 year of expertise in the distribution of electronic components. Based in Hongkong, we have already established firm and mutual-benefit business relationships with customers from,Europe,America and south Asia,supplying obsolete and hard-to-find components to meet their specific needs.

With the principle of “Quality Parts,Customers Priority,Honest Operation,and Considerate Service”,our business mainly focus on the distribution of electronic components. Line cards we deal with include Microchip,ALPS,ROHM,Xilinx,Pulse,ON,Everlight and Freescale. Main products comprise IC,Modules,Potentiometer,IC Socket,Relay,Connector.Our parts cover such applications as commercial,industrial, and automotives areas.

We are looking forward to setting up business relationship with you and hope to provide you with the best service and solution. Let us make a better world for our industry!



Contact us

Tel: +86-755-8981 8866 Fax: +86-755-8427 6832

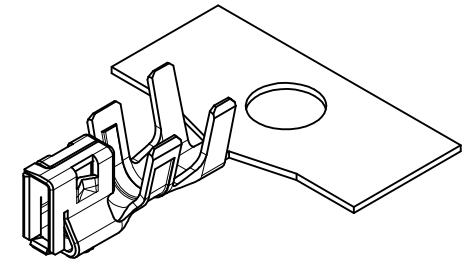
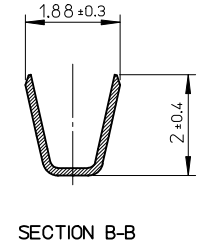
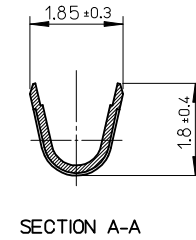
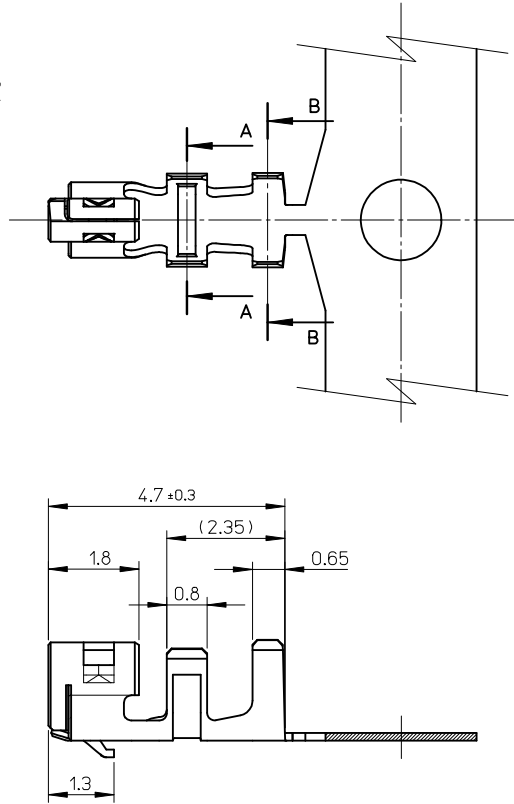
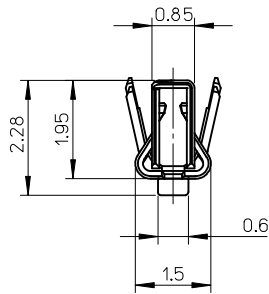
Email & Skype: info@chipsmall.com Web: www.chipsmall.com

Address: A1208, Overseas Decoration Building, #122 Zhenhua RD., Futian, Shenzhen, China



NOTES

1. Applicable housing: 502351-**00
2. Material: Phosphor bronze, pre-tinned, t=0.152



560085-0101	CHAIN
MATERIAL No.	FORM
SCALE 10:1	DESIGN UNITS METRIC
	THIRD ANGLE PROJECTION

REVISED EC NO: JTR2013-0056 DRWN: YAMAKI 2013/03/19 CHKD: HKOMATSU 2013/03/19 APPR: MAYAMOTO 2013/03/21	GENERAL TOLERANCES (UNLESS SPECIFIED)		DIMENSION STYLE MM ONLY	TITLE
	10 UNDER	± 0.2	DRAWN BY YAMAKI	DATE 2013/03/19
	10 OVER 30 UNDER	± 0.25	CHECKED BY HKOMATSU	DATE 2013/03/19
	30 OVER	± 0.3	APPROVED BY MAYAMOTO	DATE 2013/03/21
DESCRIPTION	ANGULAR ± 3 °	DRAFT WHERE APPLICABLE MUST REMAIN WITHIN DIMENSIONS	MATERIAL NO. SEE CHART	DOCUMENT NO. SD-560085-001
REV	0		SIZE A3	THIS DRAWING CONTAINS INFORMATION THAT IS PROPRIETARY TO MOLEX INCORPORATED AND SHOULD NOT BE USED WITHOUT WRITTEN PERMISSION

2.0 WIRE TO BOARD CONN.
CRIMP RECEPTACLE
(DuraClik)

molex

SHEET NO.
1 OF 1