



Chipsmall Limited consists of a professional team with an average of over 10 year of expertise in the distribution of electronic components. Based in Hongkong, we have already established firm and mutual-benefit business relationships with customers from,Europe,America and south Asia,supplying obsolete and hard-to-find components to meet their specific needs.

With the principle of "Quality Parts,Customers Priority,Honest Operation,and Considerate Service",our business mainly focus on the distribution of electronic components. Line cards we deal with include Microchip,ALPS,ROHM,Xilinx,Pulse,ON,Everlight and Freescale. Main products comprise IC,Modules,Potentiometer,IC Socket,Relay,Connector.Our parts cover such applications as commercial,industrial, and automotives areas.

We are looking forward to setting up business relationship with you and hope to provide you with the best service and solution. Let us make a better world for our industry!



Contact us

Tel: +86-755-8981 8866 Fax: +86-755-8427 6832

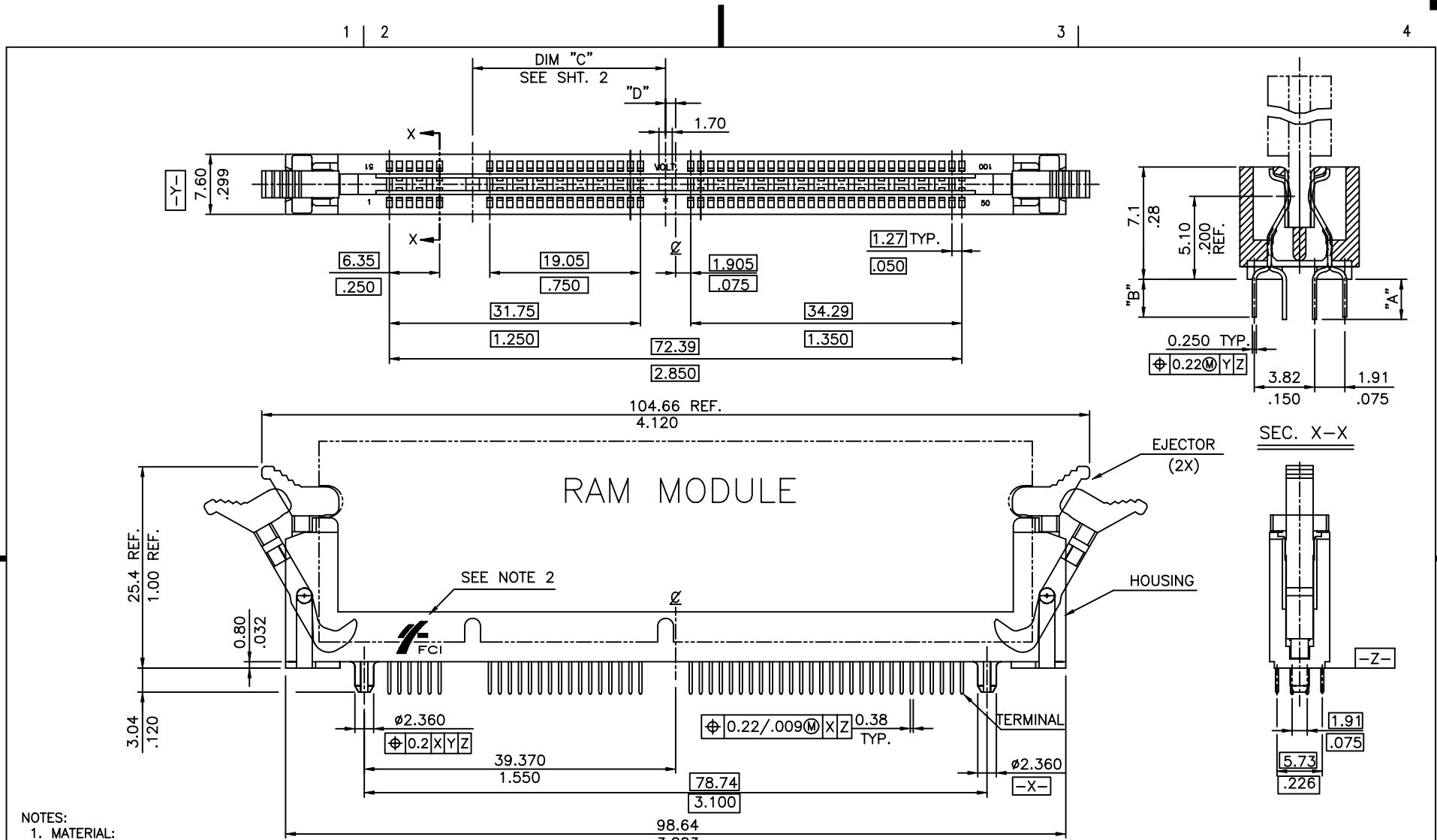
Email & Skype: info@chipsmall.com Web: www.chipsmall.com

Address: A1208, Overseas Decoration Building, #122 Zhenhua RD., Futian, Shenzhen, China



Tous droits strictement réservés. Reproduction ou communication a des tiers interdite sous quelque forme que ce soit sans autorisation écrite du propriétaire. Propriété de c FCI. Droits de reproduction FCI.

All rights strictly reserved. Reproduction or issue to third parties in any form whatever is not permitted without written authority from the proprietor. Property of FCI. Copyright FCI.



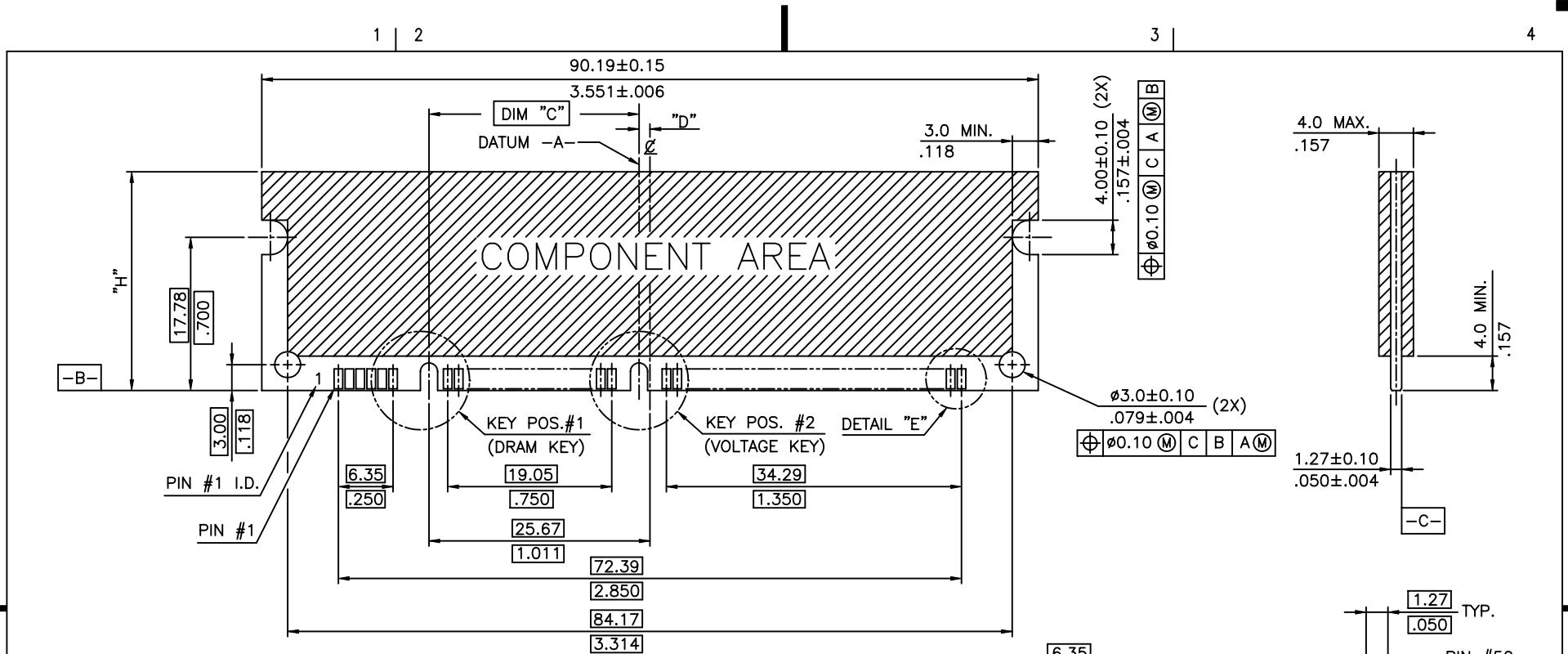
NOTES:

- MATERIAL:
HOUSING: HIGH TEMP. NYLON 46 OR THE EQUIVALENT APPROVED BY FCI, 40% GF, UL94V-0 RATED, NATURAL COLOR OR BLACK, SEE TABULATION SHEET 4.
EJECTOR: HIGH TEMP. NYLON 46 OR THE EQUIVALENT APPROVED BY FCI, 40% GF, UL94V-0 RATED, NATURAL COLOR OR BLACK, SEE TABULATION SHEET 4.
TERMINAL: PHOSPHOR BRONZE COPPER ALLOY.
- FCI LOGO TO BE APPROXIMATELY LOCATED AS SHOWN ON PRINT.
- PRODUCT SPECIFICATIONS: GS-12-066.
- PACKAGING SPECIFICATIONS: GS-14-544.
- THIS PRODUCT MEETS EUROPEAN UNION DIRECTIVES AND OTHER COUNTRY REGULATIONS AS DESCRIBED IN GS-22-008.
- THE HOUSING WILL WITHSTAND EXPOSURE TO 260° PEAK TEMPERATURE FOR 10 SECONDS IN A WAVE SOLDER APPLICATION.

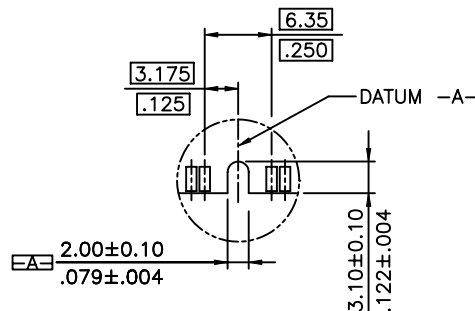
mat'l. code				tolerances unless otherwise specified			CUSTOMER COPY		 www.fciconnect.com	
ltr	ecn no	dr	date	linear	.X ±0.38/.015	projection	title			
A	T10205	M W	07/24/01		.XX ±0.25/.010		DIMM 100P V/T FORM TYPE ASS'Y			
B	T10355	M W	12/10/01		.XXX ±0.13/.005		product family DIMM code			
C	T20289	M W	09/24/02	angles	0° ±2°	MM	size		dwg no	
D	T03-0031	M W	01/23/03	dr	MAGGIE WU 12/19/00	scale	A4		56441	
E	T04-0012	M W	01/08/04	enr	BEN TSAO 12/19/00		sheet		1 of 4	
F	T05-0014	R C	01/14/05	chr	BEN TSAO 12/19/00		sheet		1 of 4	
				appd	JENN TSAO 12/19/00	1.5:1	cage code			
sheet index	revision sheet	F 1	C 2	C 3	F 4	STATUS Released 22526				

Tous droits strictement réservés. Reproduction ou communication a des tiers interdite sous quelque forme que ce soit sans autorisation écrite du propriétaire. Propriété de c FCI. Droits de reproduction FCI.

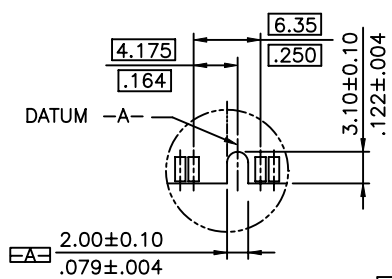
All rights strictly reserved. Reproduction or issue to third parties in any form whatever is not permitted without written authority from the proprietor. Property of FCI. Copyright FCI.



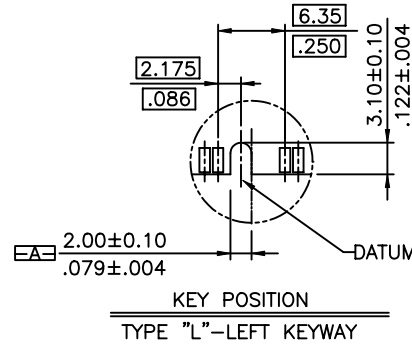
RECOMMENDED MODULE LAYOUT



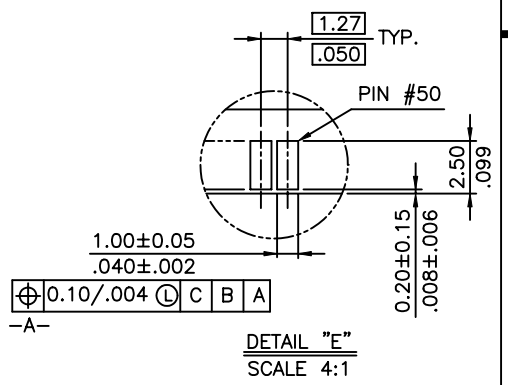
KEY POSITION
TYPE "C"—CENTER KEYWAY



KEY POSITION
TYPE "R"—RIGHT KEYWAY



KEY POSITION
TYPE "L"—LEFT KEYWAY



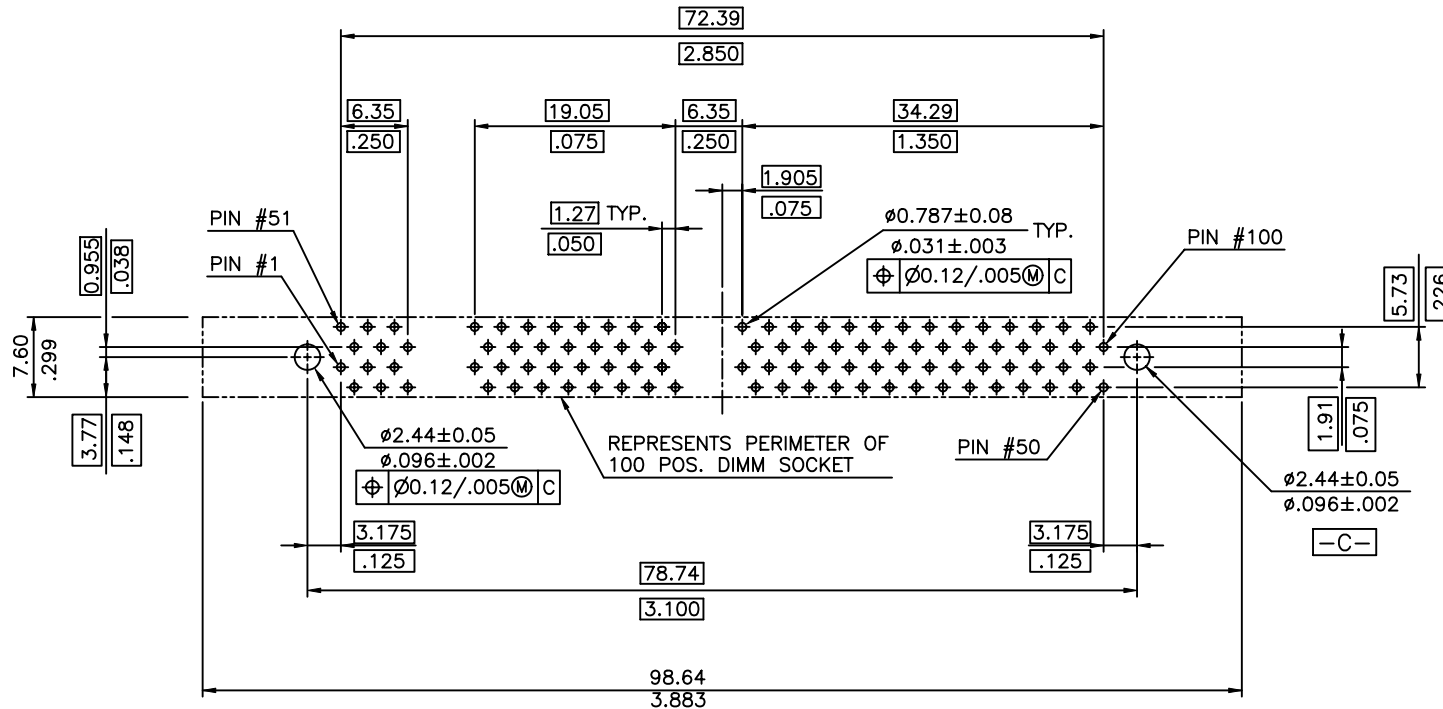
DETAIL "E"
SCALE 4:1

VARIATION	KEY POS. #1	KEY POS. #2	DESCRIPTION	DIM "C"	"D"	"H"
U1	TYPE "R"	TYPE "L"	FOR UNBUFFERED DRAM, 5.0 VOLT.	23.40/.921	2.27	25.40
U2	TYPE "R"	TYPE "C"	FOR UNBUFFERED DRAM, 3.3 VOLT.	24.40/.961	1.27	25.40
U3	TYPE "R"	TYPE "R"	FOR DDR DRAM, 2.5 VOLT	25.40/1.00	0.27	30.50


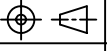
mat'l. code		tolerances unless otherwise specified		CUSTOMER COPY		 www.fciconnect.com		
ltr	ecn no	dr	date	linear	.X ±0.38/.015	projection	title	
C					.XX ±0.25/.010		DIMM 100P V/T FORM TYPE ASS'Y	
				angles	.XXX ±0.13/.005			product family
					0° ±2°	MM	DIMM	TWN
				dr	MAGGIE WU 12/19/00	scale	size	sheet
				engr	BEN TSAO 12/19/00	1.5:1	dwg no	2 of
				chr	BEN TSAO 12/19/00	A4	56441	
				appd	JENN TSAO 12/19/00			
sheet index	revision sheet						cage code	

Tous droits strictement réservés. Reproduction ou communication a des tiers interdite sous quelque forme que ce soit sans autorisation écrite du propriétaire. Propriété de c FCI. Droits de reproduction FCI.

All rights strictly reserved. Reproduction or issue to third parties in any form whatever is not permitted without written authority from the proprietor. Property of FCI. Copyright FCI.



RECOMMENDED CIRCUIT BOARD HOLE LAYOUT

mat'l. code		tolerances unless otherwise specified		CUSTOMER COPY		 www.fciconnect.com	
ltr	ecn no	dr	date	linear	.X ±0.38/.015	projection	title
C					.XX ±0.25/.010		DIMM 100P V/T FORM TYPE ASS'Y
				angles	.XXX ±0.13/.005		
					0° ±2'	product family	DIMM
				dr	MAGGIE WU 12/19/00	size	dwg no
				enr	BEN TSAO 12/19/00	code	TWN
				chr	BEN TSAO 12/19/00	sheet	3 of
				appd	JENN TSAO 12/19/00	scale	1.5:1
sheet	revision					product family	DIMM
index	sheet					size	dwg no
						code	56441
						sheet	3 of

56441 - □ □ □ □

STYLE

1 : FOR UNBUFFERED DRAM, 3.3 VOLT.
 2 : FOR UNBUFFERED DRAM, 5.0 VOLT.
 3 : FOR DDR DRAM, 2.5 VOLT.

PEG TYPE

0 : WITH RETENTION PEG = 3.04/.120

TAIL LENGTH

CODE	DIM. "A"	DIM. "B"
0	2.54 .100	2.39 .094
1	3.30 .130	3.15 .124

PLATING

CODE	CONTACT	SOLDERTAIL	UNDERPLATE
1	150μ*(3.81μm) MIN. TIN/LEAD		
2	15μ*(0.38μm) MIN. GOLD	100μ*(2.54μm)	
3	30μ*(0.76μm) MIN. GOLD	MIN. TIN/LEAD	
4	3μ*(0.076μm) MIN. GOLD		50μ* (1.27μm) MIN. NICKEL OVERALL
6LF	150μ*(3.81μm) MIN. 100% TIN		
7LF	15μ*(0.38μm) MIN. GOLD	100μ*(2.54μm)	
8LF	30μ*(0.76μm) MIN. GOLD	MIN. 100% TIN	
9LF	3μ*(0.076μm) MIN. GOLD		

COLOR OF HOUSING AND EJECTOR

0 : BLACK HOUSING + IVORY EJECTOR
 1 : IVORY HOUSING + BLACK EJECTOR

PROD. NO.	DIM."A"	DIM."B"	DIM."C"	DIM."D"	COLOR HOUSING	COLOR EJECTOR	STYLE	MARKING #2 STYLE	MARKING #1 STYLE
56441-1000*	2.54 .100	2.39 .094	24.40 .961	1.27 .05	BLACK	IVORY	FOR UNBUFFERED DRAM, 3.3 VOLT.	NONE	3.3
56441-1001*					IVORY	BLACK			
56441-1010*	3.30 .130	3.15 .124			BLACK	IVORY			
56441-1011*					IVORY	BLACK			
56441-2000*	2.54 .100	2.39 .094	23.40 .921	2.27 .089	BLACK	IVORY	FOR UNBUFFERED DRAM, 5.0 VOLT.	NONE	5.0
56441-2001*					IVORY	BLACK			
56441-2010*	3.30 .130	3.15 .124			BLACK	IVORY			
56441-2011*					IVORY	BLACK			
56441-3000*	2.54 .100	2.39 .094	25.40 1.00	0.27 .010	BLACK	IVORY	FOR DDR DRAM, 2.5 VOLT.	NONE	2.5
56441-3001*					IVORY	BLACK			
56441-3010*	3.30 .130	3.15 .124			BLACK	IVORY			
56441-3011*					IVORY	BLACK			

REMARK : 1. PROD. NO. MARK "*" SEE ABOVE PART NO. PLATING CODE DESCRIPTION.
 2. SEE DESCRIPTION UNDER PLATING FOR THE MARK "*" IN THE COLUMN OF TERMINAL PART NO..

mat'l. code		tolerances unless otherwise specified		CUSTOMER COPY		A FCI www.fciconnect.com	
ltr	ecn no	dr	date	linear	.X ±0.38/.015	projection	title
F					.XX ±0.25/.010		DIMM 100P V/T FORM TYPE ASS'Y
					.XXX ±0.13/.005		
				angles	0° ±2°		
		dr	MAGGIE WU	12/19/00		product family	DIMM
		enr	BEN TSAO	12/19/00	← MM →	size	dwg no
		chr	BEN TSAO	12/19/00	scale	A4	56441
		appd	JENN TSAO	12/19/00	1:1		
sheet	revision						
index	sheet						sheet
							4 of

Tous droits strictement reserves. Reproduction ou communication a des tiers interdite sous quelque forme que ce soit sans autorisation ecrite du proprietaire. Propriete de c FCI. Droits de reproduction FCI.

All rights strictly reserved. Reproduction or issue to third parties in any form whatever is not permitted without written authority from the proprietor. Property of FCI. Copyright FCI.



A

B