



Chipsmall Limited consists of a professional team with an average of over 10 year of expertise in the distribution of electronic components. Based in Hongkong, we have already established firm and mutual-benefit business relationships with customers from,Europe,America and south Asia,supplying obsolete and hard-to-find components to meet their specific needs.

With the principle of “Quality Parts,Customers Priority,Honest Operation,and Considerate Service”,our business mainly focus on the distribution of electronic components. Line cards we deal with include Microchip,ALPS,ROHM,Xilinx,Pulse,ON,Everlight and Freescale. Main products comprise IC,Modules,Potentiometer,IC Socket,Relay,Connector.Our parts cover such applications as commercial,industrial, and automotives areas.

We are looking forward to setting up business relationship with you and hope to provide you with the best service and solution. Let us make a better world for our industry!



Contact us

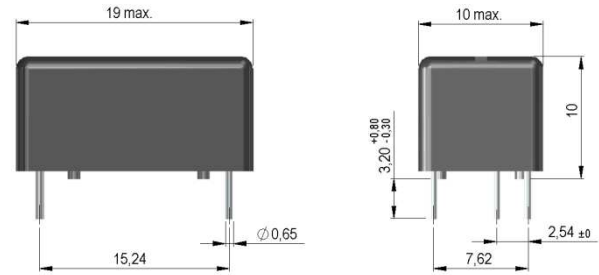
Tel: +86-755-8981 8866 Fax: +86-755-8427 6832

Email & Skype: info@chipsmall.com Web: www.chipsmall.com

Address: A1208, Overseas Decoration Building, #122 Zhenhua RD., Futian, Shenzhen, China



567 Series Optocouplers



- Features: ATEX Optocoupler for Intrinsically Safe Circuits
- Applications: Electronics for Mining, Test & Measurement, Automation Technology
- Markets: Oil & Gas Production, Refinery, Mining, Medical, Test and Measurement, and others

Part Description: **567-04-0-i**

Customer Options		Unit
Coupler Characteristics		
Isolation Voltage Input / Output (min.)	4,000	VDC
Output Current I _o (max.)	50	mA
Turn On Time (typ.) T _{on}	0.5	µsec
Turn-Off Time (typ.) T _{off}	0.5	µsec
Collector Voltage (max.)	15	VDC
Creeping Distance (min.)	14.0	mm
Air Path Input / Output (min.)	14.0	mm
Insulation Distance Emitter-Detecto (min.)	6.0	mm
Insulation Resistance Input / Output (min.)	10 ¹³	Ohm
Transmission Frequencies (typ.)	500	kHz

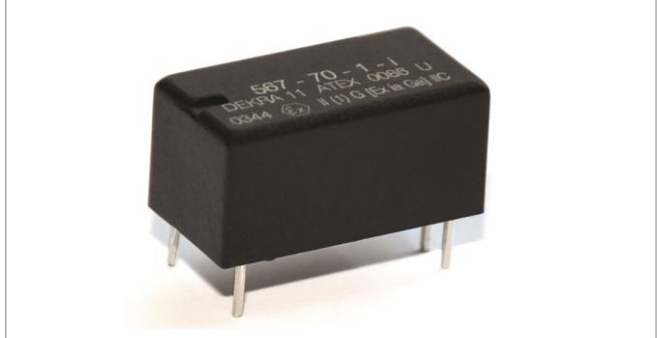
Housing and Material Specifications	
Housing Material	P6 G
Case Color	Black
Sealing Compound	Wevopur 552 FL
Connection Pins	Cu-Alloy, Tinned
Washability	Fully Sealed

Environmental Data		Unit
Shock Resistance (max.) 1/2 sine wave duration 11ms	50	g
Vibration Resistance (max.)	20	g
Operating Temperature	-20 to 85	°C
Storage Temperature	-40 to 100	°C
Soldering Temperature (max.) 5 sec. max.	260	°C

Handling Instructions	
➤	It is advised that normal static precautions be taken in handling and assembly of this component to prevent damage and/or degradation which may be induced by ESC.

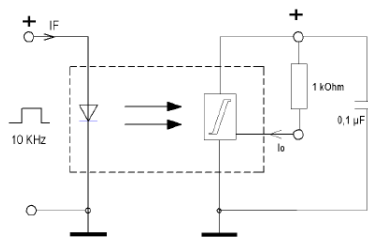


567 Optocoupler

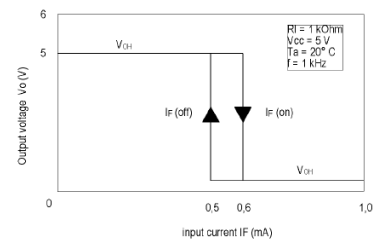


Test Circuit and Layout

Test Circuit



Transfer Characteristics (IFT)



Layout

