



Chipsmall Limited consists of a professional team with an average of over 10 year of expertise in the distribution of electronic components. Based in Hongkong, we have already established firm and mutual-benefit business relationships with customers from,Europe,America and south Asia,supplying obsolete and hard-to-find components to meet their specific needs.

With the principle of “Quality Parts,Customers Priority,Honest Operation,and Considerate Service”,our business mainly focus on the distribution of electronic components. Line cards we deal with include Microchip,ALPS,ROHM,Xilinx,Pulse,ON,Everlight and Freescale. Main products comprise IC,Modules,Potentiometer,IC Socket,Relay,Connector.Our parts cover such applications as commercial,industrial, and automotives areas.

We are looking forward to setting up business relationship with you and hope to provide you with the best service and solution. Let us make a better world for our industry!



Contact us

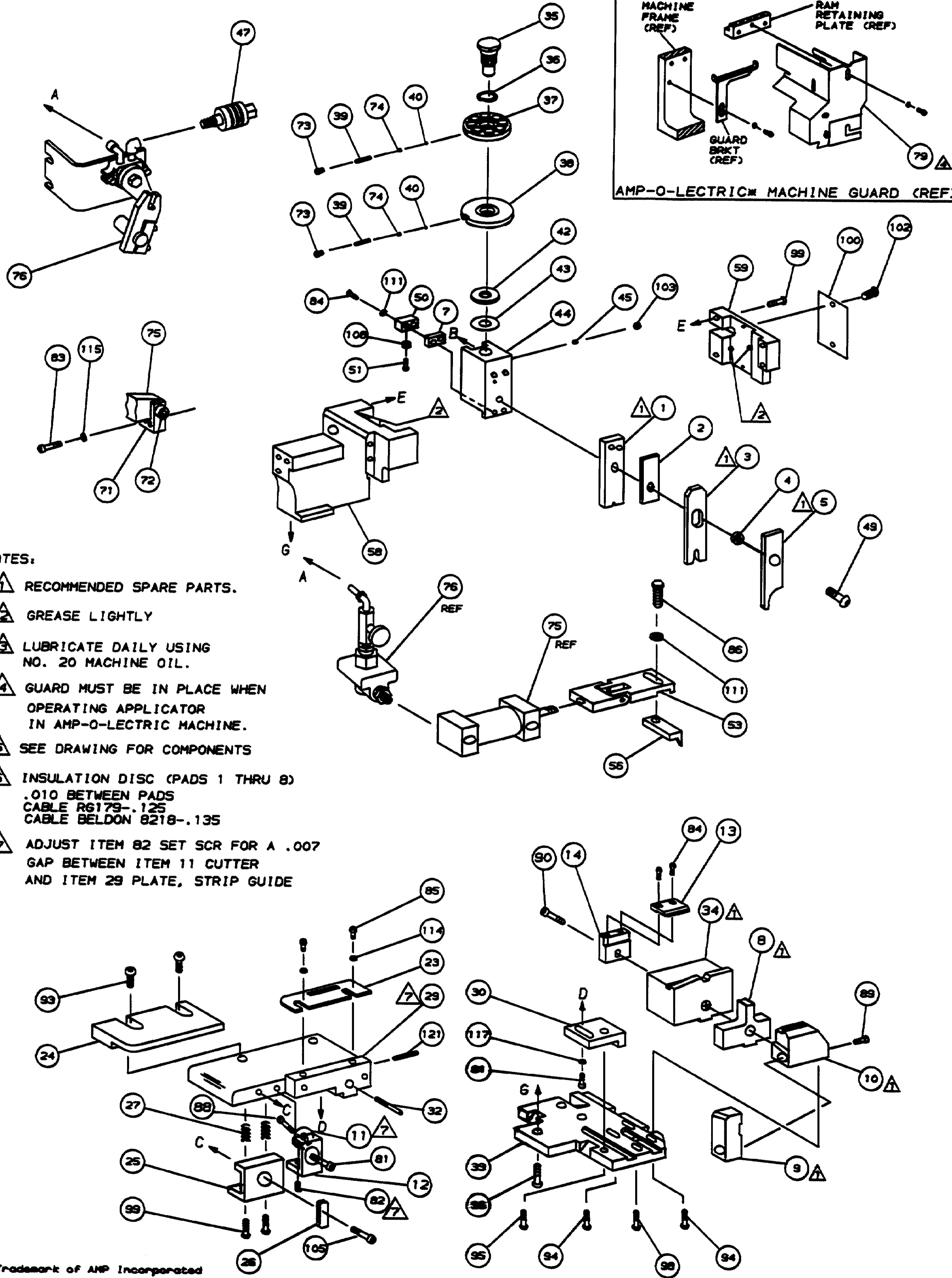
Tel: +86-755-8981 8866 Fax: +86-755-8427 6832

Email & Skype: info@chipsmall.com Web: www.chipsmall.com

Address: A1208, Overseas Decoration Building, #122 Zhenhua RD., Futian, Shenzhen, China



THIS INFORMATION IS CONFIDENTIAL AND IS DISCLOSED TO YOU ON CONDITION THAT YOU WILL MAINTAIN THE CONFIDENTIALITY OF THIS INFORMATION AND WILL NOT REPRODUCE OR TRANSMIT THIS INFORMATION IN ANY MANNER WITHOUT THE WRITTEN AUTHORIZATION FROM AMP INCORPORATED, HARRISBURG, PA.



- NOTES:**
- ▲ RECOMMENDED SPARE PARTS.
 - ▲ GREASE LIGHTLY
 - ▲ LUBRICATE DAILY USING NO. 20 MACHINE OIL.
 - ▲ GUARD MUST BE IN PLACE WHEN OPERATING APPLICATOR IN AMP-O-LECTRIC MACHINE.
 - ▲ SEE DRAWING FOR COMPONENTS
 - ▲ INSULATION DISC (PADS 1 THRU 8) .010 BETWEEN PADS
CABLE RG179-.125
CABLE BELDON 8218-.135
 - ▲ ADJUST ITEM 82 SET SCR FOR A .007 GAP BETWEEN ITEM 11 CUTTER AND ITEM 29 PLATE, STRIP GUIDE

QTY	PART NO	DESCRIPTION	ITEM NO
			124
			1
			454220-1
			CAP, HOUSING
			59
			123
			1
			454485-1
			HOUSING
			58
			122
			1
			458537-1
			PAWL, FEED
			56
			120
			119
			118
			1
			461062-1
			FEED FINGER ASSY
			53
			117
			116
			811242-2
			BUMPER, HOLDDOWN
			51
			115
			690753-1
			SPACER, TONKER
			50
			114
			1
			7-21002-9
			BOLT, CRIMPER (5/16-24x1.00)
			49
			113
			112
			1
			24042-2
			VALVE, SHUT OFF
			48
			111
			110
			1
			690191-1
			PLUG, NYLON
			45
			109
			1
			455673-3
			RAM
			44
			108
			1
			690125-1
			WASHER, LAMINATED
			43
			107
			1
			690124-1
			WASHER, RAM
			42
			106
			1
			22353-8
			SCR, SHLD (.187x.25) DRAG LEVER
			105
			2
			23241-6
			BALL, STEEL
			40
			104
			2
			690170-1
			SPRING, COMPRESSION
			39
			103
			1
			690142-1
			DISC, INSULATION
			38
			102
			1
			7-455829-2
			DISC, WIRE
			37
			101
			1
			22480-5
			WASHER, SPRING
			36
			100
			1
			690212-1
			POST, RAM
			35
			99
			1
			853857-1
			ANVIL, HEX
			34
			98
			1
			455675-1
			PLATE, BASE
			33
			97
			1
			690432-3
			SCREW, ADJUSTMENT
			32
			96
			3
			2-22733-8
			SCR, BHC (1/4-20x.62) HOUSING
			31
			95
			1
			455689-1
			BLOCK, STRIP GUIDE ADJ
			30
			94
			1
			853242-1
			PLATE, STRIP GUIDE
			29
			93
			2
			2-21002-1
			SCR, BHC (8-32x.38) STRIP GUIDE
			28
			92
			2
			1-22284-0
			SPRING, DRAG
			27
			91
			1
			240793-1
			LEVER, DRAG RELEASE
			26
			90
			1
			240792-1
			DRAG, STOCK
			25
			89
			1
			9-690504-7
			GUIDE, STRIP (REAR)
			24
			88
			1
			853318-1
			GUIDE, STRIP (FRONT)
			23
			87
			1
			2-22603-1
			SCR, HEX HEAD (8-32x.38) FEED FINGER
			22
			86
			2
			1-21000-3
			SCR, SKT CAP (4-40x.25) F STRIP GUIDE
			21
			85
			2
			2-21000-7
			SCR, SKT CAP (8-32x.50) STRIPPER
			20
			84
			2
			3-21000-7
			SCR, SKT CAP (10-32x.75) FEED ASSY
			19
			83
			1
			4-21006-1
			SCR, SET (8-32x.312) HOLD, SCR
			18
			82
			1
			3-21000-4
			SCR, SKT CAP (10-32x.38) SG ADJ BL
			17
			81
			1
			462992-7
			GUARD, ASSY
			16
			80
			1
			79
			1
			853839-1
			HOLDER, STRIPPER
			14
			78
			1
			853838-1
			STRIPPER
			13
			77
			1
			853298-1
			HOLDER, SCORING
			12
			76
			1
			853316-1
			CUTTER
			11
			75
			1
			853854-1
			SUPPORT
			▲ 10
			74
			1
			853260-1
			PLATE, LEFT SHEAR
			▲ 9
			73
			1
			853856-1
			ANVIL
			▲ 8
			72
			1
			459610-3
			MOUNT, FEED BRACKET
			7
			71
			1
			853261-1
			BLADE, SLUG
			6
			70
			1
			1-238011-2
			SPACER, TUBULAR
			5
			69
			1
			4-683454-0
			CRIMPER, INSULATION
			▲ 4
			68
			1
			455888-4
			SPACER, CRIMPER
			3
			67
			1
			853840-1
			CRIMPER, WIRE, HEX
			▲ 2
			66
			1
			853840-1
			CRIMPER, WIRE, HEX
			▲ 1
			65
			64
			QTY
			PART NO
			DESCRIPTION
			ITEM NO

CRIMPING DATA				APPLICATOR WILL APPLY	
PAD LTR	CRIMP HEIGHT	WIRE SIZE	WIRE STRIP LENGTH		
62	-	-	-	-	750008
61	-	-	-	-	750010
60	-	-	-	-	750018
		.125	RG179		
		.135	B8218		
CRIMP	SIZE	TYPE	FEED	APPL INST	
HEX	-	HEX	.750	AI 8040	
INSUL	.170	0			
WIRE RANGE		INSULATION RANGE	MAGAZINE NO		
			565435-5		

REVISION		NO	REV
APPL USED ON MACHINE PART NO		TO APPLY TERMINAL	
CUSTOMER NAME	MACH SERIAL NO	DISTRIBUTION	
ADDRESS	APPL SERIAL NO	ORIGINAL	
CITY	PURCHASE ORDER	CUSTOMER COPY	
	ENG APP	FIELD ENG COPY	

NOTE: SEE NOTE 6 FOR INS CR HT

SET UP GAGE	10-1		
458637-1	L1350		
OR 10-8	APP 1350		
10-8	DATE		
C	0150-4524-99	78	11-88
B1	0150-4524-99	78	3-88
B	ECN A-351192	LC	1-30-88
A	ECN A-255791	78	4-87

AMP INCORPORATED
HARRISBURG, PA.

NO 567357-3 REV C

MINIATURE QUICK CHANGE APPLICATOR
SIDE FEED (PLUG & RCPT SHELL)